



สต็อกทุนของประเทศไทย

ฉบับ พ.ศ. ๒๕๖๔

CAPITAL STOCK OF THAILAND

2021 EDITION



สำนักงานสภาพัฒนาการเศรษฐกิจและสังคมแห่งชาติ
Office of the National Economic and Social Development Council

EXECUTIVE SUMMARY



Executive Summary Capital Stock of Thailand in 2021

Overview

1. Gross Capital Stock

Gross capital stock at replacement cost in 2021 was 63,477.2 billion baht, an increase of 1,969.2 billion baht from 2020. This year's main positive outlook came from an expansion in the private and public sectors, which showed an increase of 1,327.8 and 641.4 billion baht, respectively. This year's favorable outcome was attributable to easing COVID-19 restrictions compared to the previous year; consequently, the private sector's capital accumulation increased in response to domestic and external demand. Besides, the government's investment promotion measures stimulated capital formation in almost economic activities. Nonetheless, the investment in accommodation and food service activities; and transportation and storage showed a slower growth rate than the previous year.

2. Net Capital Stock

Net capital stock at replacement cost was 38,992.7 billion baht, gained by 531.7 billion baht from 2020. After comparing to GDP at current prices, which was 16,178.7 billion baht in 2021, net capital stock at replacement cost was about 2.4 times larger than GDP.

2.1 Net Capital Stock classified by institutions

The private sector owned the majority proportion, accounting for 69.4% of total net capital stock, and the public sector held the remainder of only 30.6%.

2.2 Net Capital Stock classified by economic activities

1) **Agricultural sector:** net capital stock at replacement cost in 2021 was recorded at 2,999.8 billion baht. By terms of chain volume measures, or real terms, the net capital stock grew by 1.5%, accelerated from a fall of 1.2% in 2020.

2) **Non-agricultural sector:** net capital stock at replacement cost in 2021 was 35,992.9 billion baht. In real terms, it increased by 0.6%, improving from a 0.9% drop in 2020. Precise details for the Industrial and service sectors are as follows.

- **Industrial sector:** net capital stock of the industrial sector expanded by 1.7%, recovering from a drop of 0.2% in 2020. The main contributor to this improvement was the investment in machinery and the construction of industrial plants.

- **Service sector:** net capital stock of the service sector grew slightly by 0.1%, in contrast to a drop of 1.2% in 2020. This improvement resulted from a higher investment in construction, wholesale and retail trade, and human health and social work activities. However, accommodation and food service activities, and transport and

storage, which the COVID-19 pandemic has severely hit, continue to face many challenges in resuming their businesses.

Table 1 Value, Structure and Growth Rate of Gross Capital Stock and Net Capital Stock

Unit – Billion Bath

	2016	2017	2018	2019	2020	2021p
Value of Gross Capital Stock at Replacement Cost	57,231.5	59,100.4	61,093.3	62,174.8	61,508.0	63,477.2
Growth Rate of Gross Capital Stock at CVM (%)	2.6	2.0	2.9	1.4	-1.1	2.3
• Public	3.2	-2.4	1.6	-0.5	2.4	2.6
• Private	2.3	4.1	3.4	2.3	-2.5	2.2
Value of Net Capital Stock at Replacement Cost	36,102.4	37,081.2	38,265.9	38,815.7	38,461.0	38,992.7
• Public	11,313.2	11,043.0	11,334.3	11,322.4	11,633.3	11,915.7
• Private	24,789.2	26,038.2	26,931.6	27,493.3	26,827.8	27,077.0
Growth rate of Net Capital Stock at CVM (%)	2.7	2.3	3.1	1.3	-0.9	0.6
• Public	2.4	-2.8	0.7	-0.5	2.4	1.8
• Private	2.8	4.2	4.1	2.1	-2.3	0.2

3. Capital factor sector analysis and sources of economic growth in 2021

3.1 Incremental Capital Output Ratio: ICOR¹

Overview

In 2021, the Thai economy began to show signs of recovery after relaxing COVID-19 restrictions and a recovery in domestic and external demand, spurring the overall investment and production. As a result, ICOR registered at 1.10 in 2021, implying a one-unit increase in value-added requires 1.10 units of additional capital. The following details presented the individual productivity as follows.

Agriculture sector: In 2021, the ICOR of the agriculture sector was 5.30, implying that a unit increase in value-added requires 5.30 units of marginal capital. It was reflected in higher yields and increased agricultural machinery investment.

Industrial sector: In 2021, the ICOR of the industrial sector was 1.10, implying a unit increase in value-added requires 1.10 units of marginal capital. There was an improvement in both investment and industrial sectors due to the easing of the COVID-19 restrictions and the recovery of domestic and external demand, as seen in the capital utilization rate in 2021, recorded at 63.0 in comparison with 60.1 in 2020.

¹ $ICOR = \frac{\Delta NK_t}{\Delta GDPT}$

Service sector: ICOR was 0.39, meaning a 0.39 unit of capital was required for an additional a unit of GDP. The overall production and investment slightly grew from last year. However, the two main service sectors, transportation and storage, and accommodation and food service activities, have not yet recovered.

3.2 Capital Productivity: CP²

Overview

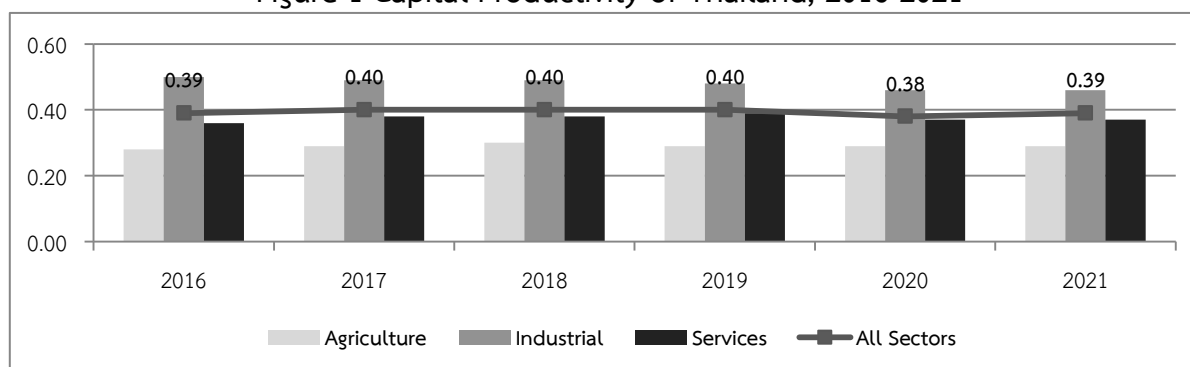
Capital productivity in 2021 was 0.39, marginally improving from 0.38 in 2020, although it was lower than 0.40, which remained constant from 2017-2019. It indicated that each unit of capital is used to produce 0.39 units of GDP. Capital productivity is discussed in detail below.

Agricultural sector: In 2021, capital productivity of the agricultural sector was 0.29, implying one unit of capital resulted in 0.29 units in agricultural value-added. The agriculture sector performed lower than the national average, recorded at 0.39, and had the least efficiency compared to the others.

Industrial sector: Capital productivity of the industrial sector was 0.46. Based on this estimate, one unit of capital used in the industrial sector could contribute to 0.46 units of industrial value-added. Industrial productivity remained constant with last year, though it was still lower than in 2018 and 2019, which registered at 0.49 and 0.48, respectively. Nevertheless, compared with the national average, the industrial sector outperformed other sectors.

Service sector: Capital productivity of the service sector was 0.37, registered at the same value as the previous year. Compared to 0.39 of the national average, the capital productivity of the service sector was slightly lower than the national average.

Figure 1 Capital Productivity of Thailand, 2016-2021



² $CP = \frac{GDP}{\text{Net Capital Stock}}$

3.3 Total Factor Productivity: TFP

In 2021, the Thai economy bounced back by 1.5%, from a fall of 6.2% in 2020. The source of growth was contributed by all of the factors, which consist of TFP by 1.05%, capital factor by 0.41%, and labor factor by 0.07%. This year Thai economy received a favorable outcome due mainly to relaxing COVID-19 restrictions compared with the previous year. TFP by the source of growth is discussed below.

Agricultural sector: In 2021, the agricultural sector grew by 1.0%, improving from a fall of 3.5% in the previous year. When considering the source of growth, the positive outcome was provided by a capital factor of 1.16% and labor factor of 0.29%, while TFP decreased by 0.47%.

Industrial sector: In 2021, it expanded by 3.4%, improving from a fall of 5.9% in 2020. This year, the sources of growth that recorded an expansion were TFP and capital factor, showing the rate at 2.72% and 1.14%, orderly. However, the labor factor showed a 0.45% negative point, consecutively in negative terms since 2019.

Service sector: In 2021, the service sector grew by 0.7%, rising from a contraction of 6.7% in 2020. The positive outcome contributed by TFP was 0.73% and 0.06% of capital factors, while the labor factor fell by 0.12%.

Table 2 Capital factor analysis and sources of economic growth in 2021

	ICOR*	CP**	GDP Growth	Labor	Land	Capital	TFP***
Overall	1.10	0.39	1.53	0.07	0.00	0.41	1.05
● Agriculture	5.30	0.29	0.98	0.29	0.00	1.16	-0.47
● Industrial	1.10	0.46	3.40	-0.45	-	1.14	2.72
● Services and others	0.39	0.37	0.67	-0.12	-	0.06	0.73

*Incremental Capital Output Ratio: ICOR

**Capital Productivity: CP

***Total Factor Productivity: TFP

Summary of Thailand's capital stock

	2016	2017	2018	2019	2020	2021p
Growth rate of GDP (%)	3.4	4.2	4.2	2.2	-6.2	1.5
Net capital stock at replacement cost (Billion Bath)	36,102.4	37,081.2	38,265.9	38,815.7	38,461.0	38,992.7
• Public	11,313.2	11,043.0	11,334.3	11,322.4	11,633.3	11,915.7
• Private	24,789.2	26,038.2	26,931.6	27,493.3	26,827.8	27,077.0
Growth rate of Net Capital Stock at CVM (%)	2.7	2.3	3.1	1.3	-0.9	0.6
• Public	2.4	-2.8	0.7	-0.5	2.4	1.8
• Private	2.8	4.2	4.1	2.1	-2.3	0.2
Structure of Net Capital Stock (%)						
• Public	31.3	29.8	29.6	29.2	30.2	30.6
• Private	68.7	70.2	70.4	70.8	69.8	69.4
Net Capital Stock at Replacement Cost (Billion Bath)						
• Agriculture	2,833.0	2,768.0	2,974.6	3,033.2	2,947.0	2,999.8
• Industrial	9,465.8	9,874.9	10,335.7	10,422.1	10,411.1	10,657.7
• Services and others	23,803.6	24,438.3	24,955.6	25,360.4	25,103.0	25,335.2
Growth Rate of Net Capital Stock at CVM (%)						
• Agriculture	3.7	2.6	3.1	1.0	-1.2	1.5
• Industrial	3.0	3.4	4.1	0.04	-0.2	1.7
• Services and others	2.4	1.8	2.7	1.9	-1.2	0.1
Incremental Capital Output Ratio: ICOR	2.02	1.42	1.86	1.54	0.37	1.10
Capital Productivity: CP	0.39	0.40	0.40	0.40	0.38	0.39
• Agriculture	0.28	0.29	0.30	0.29	0.29	0.29
• Industrial	0.50	0.49	0.49	0.48	0.46	0.46
• Services and others	0.36	0.38	0.38	0.39	0.37	0.37
Total Factor Productivity: TFP						
• Agriculture	-3.45	2.72	3.14	-1.21	-2.48	-0.47
• Industrial	-0.39	0.73	-0.47	0.48	-5.09	2.72
• Services and others	3.22	4.38	3.20	2.19	-6.38	0.73
• Overall	2.04	2.95	1.83	1.53	-5.67	1.05

Source: National Accounts Division, Office of the National Economic and Social Development Council

CAPITAL STOCK OF THAILAND
2021 EDITION

CAPITAL STOCK OF THAILAND IN 2021

1. Overview

1.1 Gross Capital Stock

Gross capital stock at the current replacement cost in 2021 was 63,477.2 billion baht, increased by 1,969.2 billion baht from 2020. The main factor for this improvement was an increase in the gross capital stock of the private and public sectors, which increased by 1,327.8 and 641.4 billion baht, respectively. The improvement was partly due to relaxing COVID-19 restrictions, which prompted the private sector to hasten its capital accumulation to support higher demand from domestic and external markets. In addition, the government's investment promotion measures helped increase capital formation in almost economic activities. However, despite an overall improvement, the accommodation and food service activities and transport and storage suffered a continuous decrease from last year.

1.2 Net Capital Stock

Net capital stock at replacement cost was 38,992.7 billion baht in 2021, increased by 531.7 billion baht from 2020. Compared to the GDP, which accounted for 16,178.7 billion baht at current prices, the net capital stock was approximately 2.4 times higher than GDP.

Figure 1 Value of Net Capital Stock and GDP at current prices

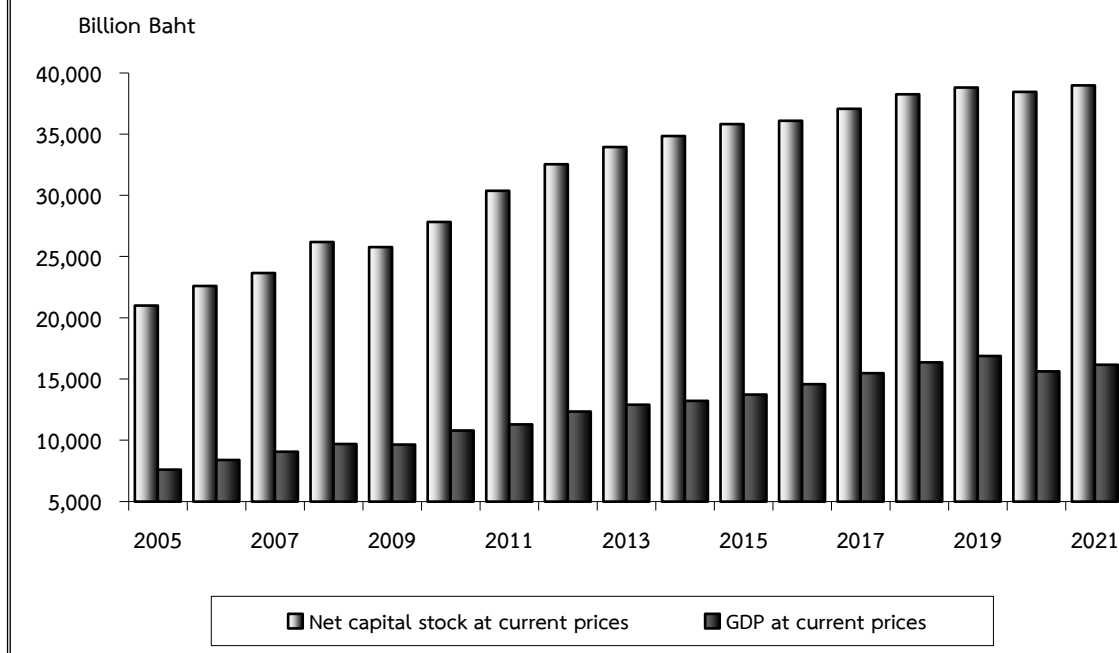
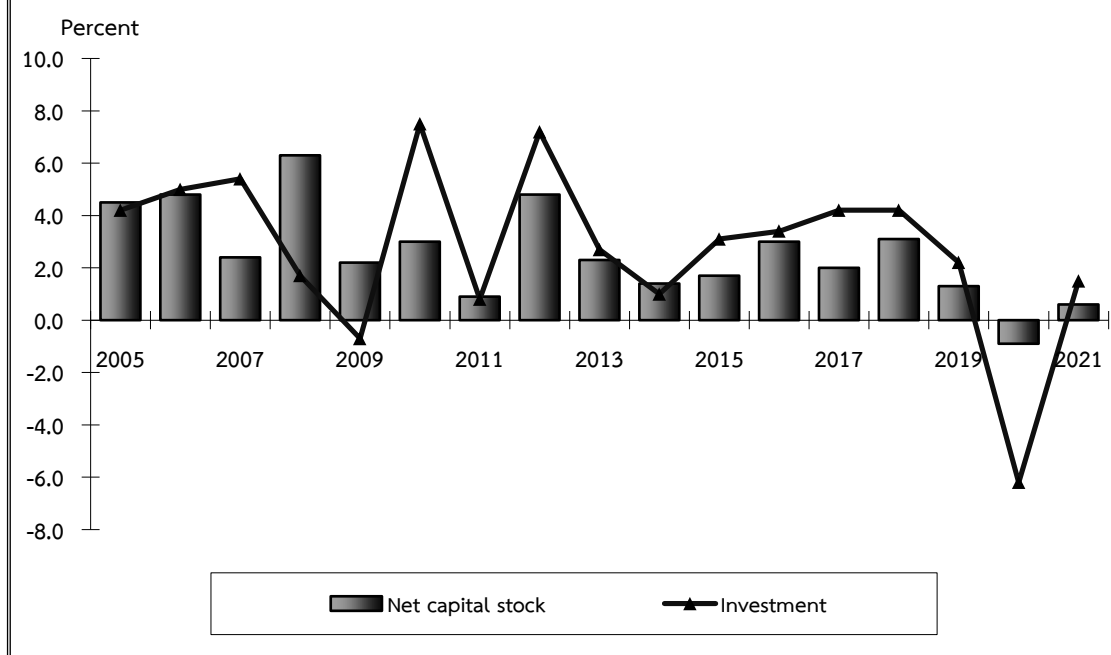


Figure 2 Growth rates of net capital stock and investment in real term



2. Classification

The net capital stock is classified by the institutional sector and by the kind of activity.

2.1 Classified by institutional sector consists of the capital stock held by the public sector and by the private sector.

2.1.1 Public sector

Overview

Gross capital stock in the public sector in 2021 had a value of 19,647.2 billion baht at replacement cost, gained by 641.4 billion baht from 2020. After adjusting for depreciation, the net capital stock was 11,915.7 billion baht. In real terms, it expanded by 1.8%, compared to a rise of 2.4% in the previous year. The slowdown was significantly affected by a deceleration in agriculture and construction investment, partially influenced by a base effect caused by the government's investment promotion measures during the COVID-19 pandemic.

Structure of public sector net capital stock

Net capital stock at replacement cost owned by the public sector was 30.6% of total net capital stock. It can be classified according to the type of production activities as follows.

1. **Agriculture:** In 2021, the public sector's assets were recorded at 1,517.9 billion baht, accounting for 12.7% of total net capital stock. The majority of the assets were the capital in the irrigation system.

2. **Industrial sector:** In 2021, the public sector's assets were 2,474.5 billion baht, accounting for 20.8% of total net capital stock. Most of the assets were the capital in electricity, gas, steam, and air conditioning supply with a value of 1,938.1 billion baht.

3. **Service sector:** In 2021, the public sector's assets were recorded at 7,923.3 billion baht, accounting for 66.5% of total net capital stock. Most of the assets were the capital in transportation and storage with a value of 3,872.6 billion baht in line with infrastructure investments such as roads, railways, and airports.

3.1.2 Private sector

Overview

In 2021, the total value of gross capital stock incorporated by the private sector at the current replacement cost was 43,830.0 billion baht, increased by 1,327.8

billion baht from 2020. After deducting depreciation, the net capital stock was 27,077.0 billion baht. In the real terms, it grew by 0.2%, rising from a reduction of 2.3% in the prior year.

Structure of private sector net capital stock

Net capital stock at the current replacement cost held by the private sector accounted for 69.4% of total net capital stock. It can be classified according to the type of production activities as below.

1. **Agriculture sector:** In 2021, the net capital stock of the private sector, at replacement cost, registered a value of 1,481.9 billion baht, covering 5.5% of total private net capital stock. Most of the assets were agricultural machinery and livestock breeders.

2. **Industrial sector:** at the current replacement cost, the private sector possessed 8,183.2 billion baht, 30.2% of total private net capital stock. Most of the assets were in manufacturing, with a value of 6,649.9 billion baht.

3. **Service sector:** private sector held most of the service sector's net capital stock, valued at 17,411.9 billion baht, or 64.3% of all private net capital stock. The activity that owned the most assets was real estate, which accounted for 6,812.1 billion baht, transportation and storage, and wholesale and retail trade, which registered as 3,194.2 and 2,649.3 billion baht, respectively.

Table 1 Value, Structure and Growth Rate of Net Capital Stock at Current Replacement Cost

Unit : Billion Baht

	2016	2017	2018r	2019	2020	2021p
Value of Gross Capital Stock at Current Replacement Cost	57,231.5	59,100.4	61,093.3	62,174.8	61,508.0	63,477.2
Growth Rate of Gross Capital Stock at CVM (%)	2.8	2.0	2.9	1.4	-1.1	2.3
Public	3.5	-2.4	1.6	-0.5	2.4	2.6
Private	2.4	4.1	3.4	2.3	-2.5	2.2
Value of Net Capital Stock at Current Replacement Cost	36,102.4	37,081.2	38,265.9	38,815.7	38,461.0	38,992.7
Public	11,313.2	11,043.0	11,334.3	11,322.4	11,633.3	11,915.7
Private	24,789.2	26,038.2	26,931.6	27,493.3	26,827.8	27,077.0
Structure of Net Capital Stock at replacement cost (%)	100.0	100.0	100.0	100.0	100.0	100.0
Public	31.3	29.8	29.6	29.2	30.2	30.6
Private	68.7	70.2	70.4	70.8	69.8	69.4
Growth Rate of Net Capital Stock in real term (%)	3.0	2.0	3.1	1.3	-0.9	0.6
Public	2.8	-2.8	0.7	-0.5	2.4	1.8
Private	3.1	4.2	4.1	2.1	-2.3	0.2

Figure 3 Value and Growth Rate of Public Sector Net Capital Stock

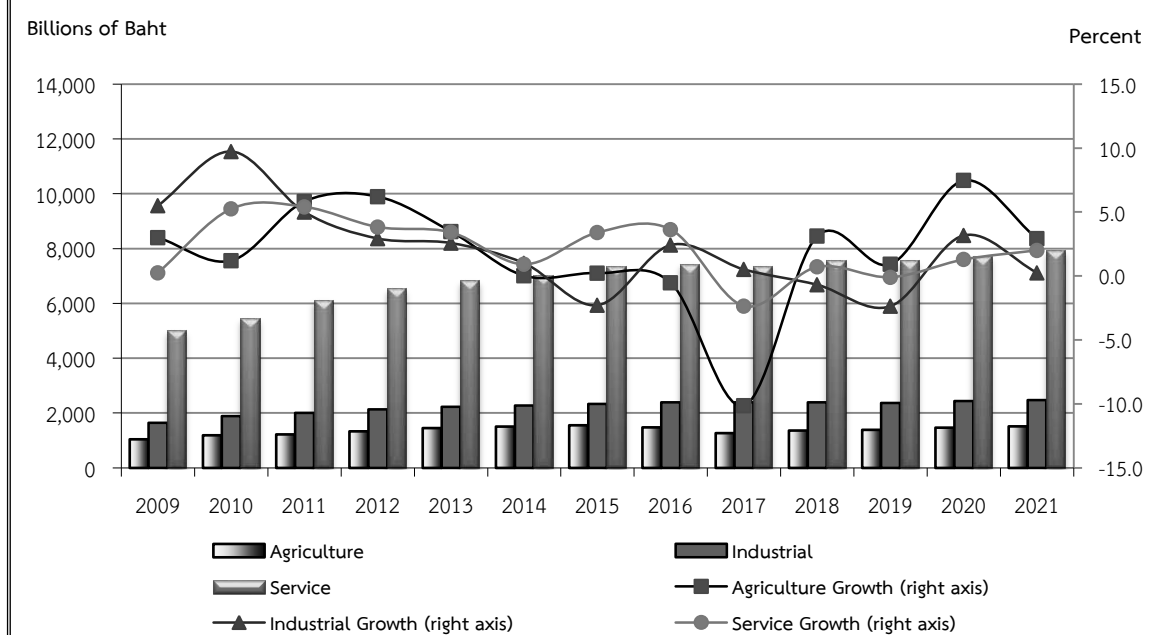
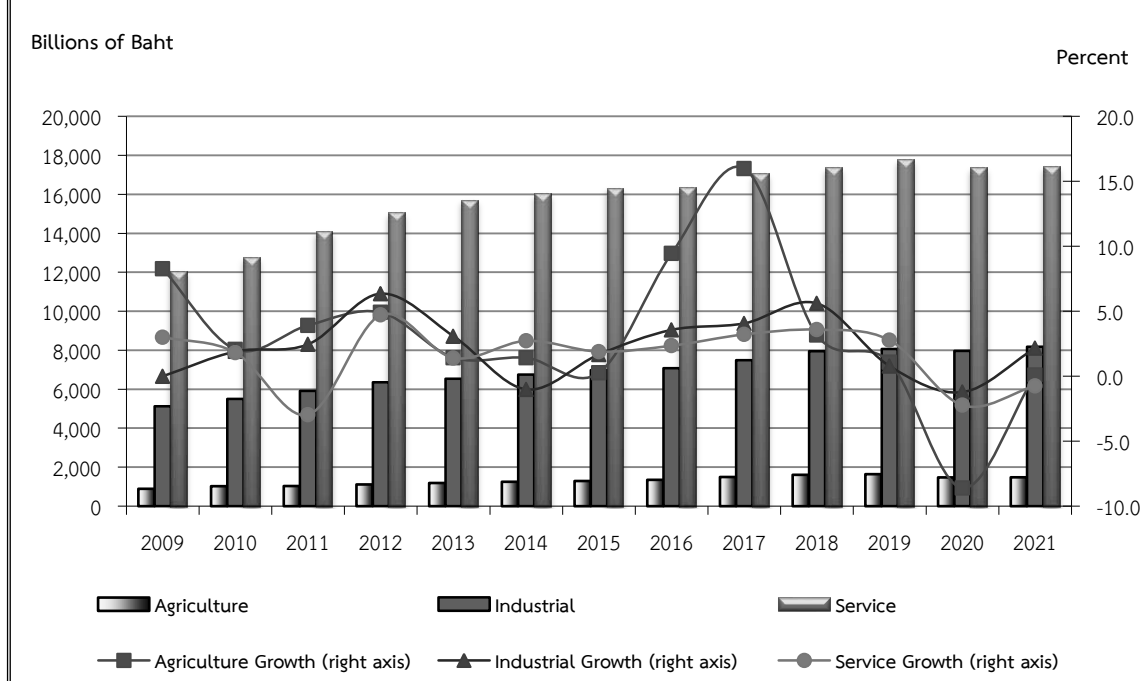


Figure 4 Value and Growth Rate of Private Sector Net Capital Stock



2.2 Classified by the kind of activity

2.2.1 Capital stock by the kind of activity

Net capital stock classified by the kind of activity comprises 19 different sectors as follows, agriculture, forestry and fishing; mining and quarrying; manufacturing; electricity, gas, steam and air conditioning supply; water supply, sewerage, waste management and remediation activities; construction; wholesale and retail trade, repair of motor vehicles and motorcycles; transport and storage; accommodation and food service activities; information and communication; financial and insurance activities; real estate activities; professional, scientific and technical activities; administrative and support service activities; public administration and defense, compulsory social security; education; human health and social works; arts, entertainment and recreation; and other service activities.

As aforementioned, gross capital stock at the current replacement cost in 2021 was 63,477.2 billion baht. When breaking down capital stock by the kind of activity, real estate activities possessed the relatively highest value of 11,530.9 billion baht, followed by transport and storage with the value of 11,497.3 billion baht, manufacturing with the value of 11,356.1 billion baht, agriculture, forestry and fishing with the value of 5,020.9 billion baht, electricity, gas, steam and air conditioning supply with the value of 4,999.1 billion baht, wholesale and retail trade; repair of motor vehicles and motorcycles with the value of 4,722.5 billion baht, human health and social works with the value of 2,646.6 billion baht, construction with the value of 2,043.6 billion baht, accommodation and food services activities with the value of 1,772.1 billion baht, information and communication with the value of 1,441.9 billion baht, other services activities with the value of 1,402.3 billion baht, education with the value of 1,343.2 billion baht, public administration and defense; compulsory social security with the value of 1,177.9 billion baht, mining and quarrying with the value of 973.2 billion baht, financial and insurance activities with the value of 918.2 billion, water supply; sewerage, waste management and remediation activities with the value of 505.2 billion baht, administrative and support services with the value of 52.5 billion baht, arts, entertainment and recreation with the value of 38.0 billion baht, and professional, scientific and technical activities with the value of 35.6 billion baht.

In real terms, the gross capital stock rose by 2.3%, improving from a 1.1% fall in 2020. The primary factor for the positive outcome was given by expansion in almost all the activities. The sectors which recovered from the previous year were manufacturing (6.5%), wholesale and retail trade (1.3%), and agriculture, forestry, and fishing (1.1%). Next, the sectors which continued to increase from last year were human health and social works, construction, and real estate activities, with growth of 4.6%, 4.2%, and 3.5% orderly. Despite the overall positive results, accommodation and food service activities and transport and storage were still in the downward trend, which fell by 5.9% and 0.2%, respectively.

2.2.2 Net capital stock by the kind of activity

Regarding the net capital stock, the value at the current replacement cost in 2021 was 38,992.7 billion baht. The sector showing the highest value was real estate activities with a value of 7,489.1 billion baht, followed by transport and storage with 7,066.9 billion baht. In contrast, professional, scientific, and technical activities recorded the lowest, with a value of 20.4 billion baht.

Net capital stock in real terms (or CVMs) increased by 0.6%, improving from a 0.9% decline in 2020. The main contributors to the positive outcome were manufacturing, increasing by 2.8%, and agriculture, forestry, and fishing expanding by 1.5%, from a reduction of 0.6% and 1.2% in 2020, respectively. Moreover, the sectors that continuously increased were human health and social work (2.0%), construction (1.4%), and mining and quarrying (1.0%). On the other hand, transport and storage, accommodation and food service activities, professional, scientific, and technical activities, and education continued to fall from the previous year.

Figure 5 Structure of Net Capital Stock in 2021 at current replacement cost

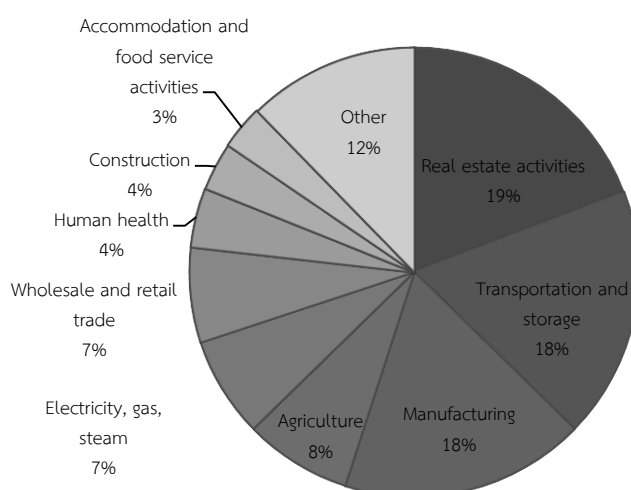
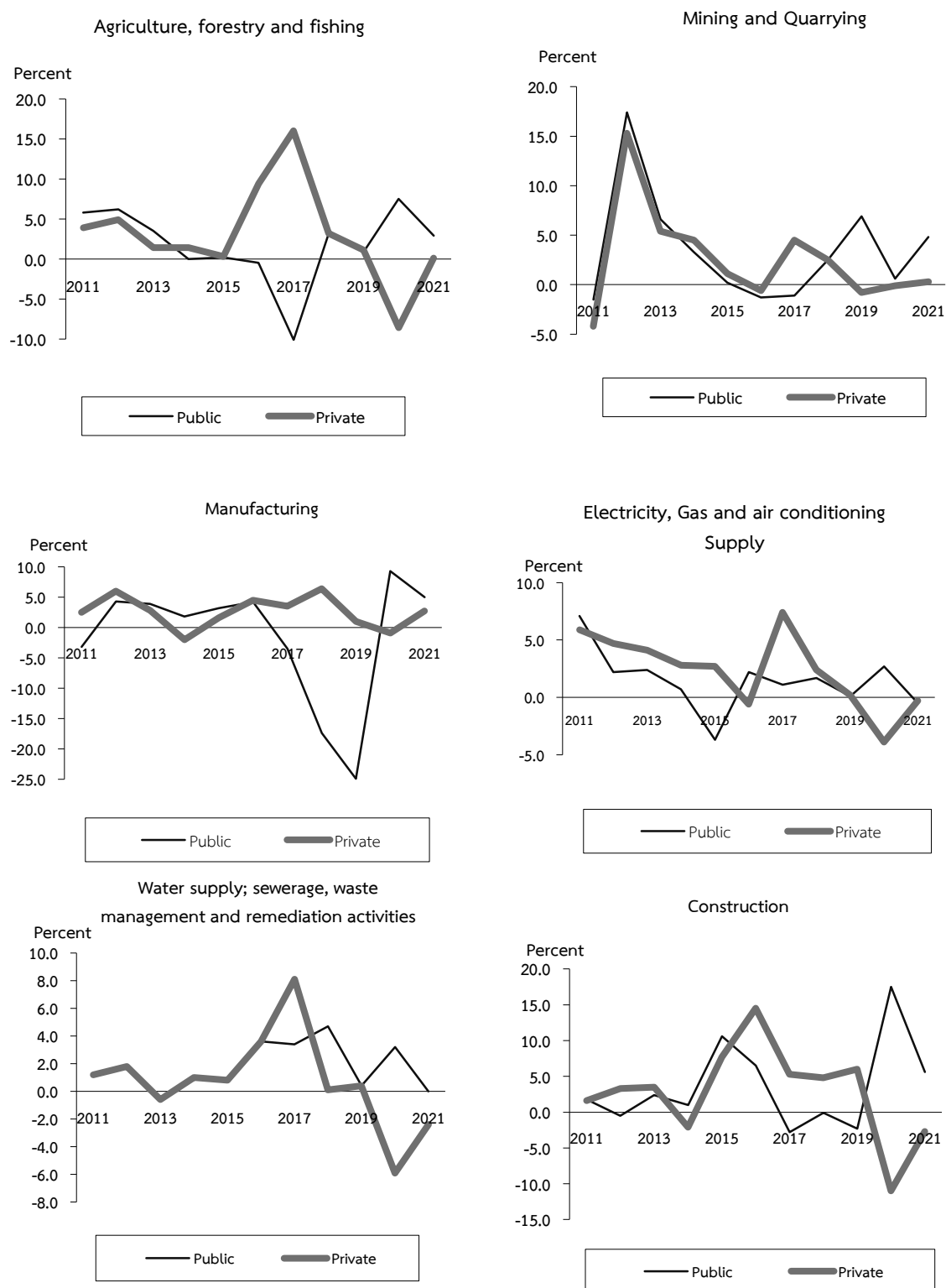


Table 2 Value of Net Capital Stock at Replacement Cost by Economic Activities

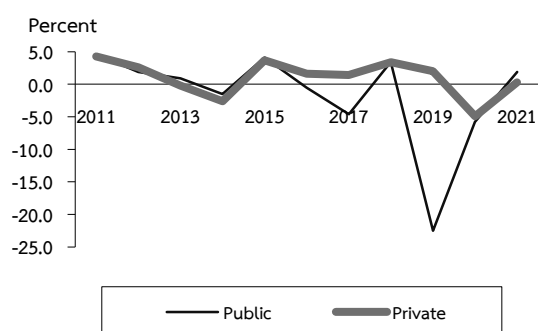
Unit : Billion Baht

Sectors	2016	2017	2018r	2019	2020	2021p
Agriculture, forestry and fishing	2,833.0	2,768.0	2,974.6	3,033.2	2,947.0	2,999.8
Mining and Quarrying	541.3	582.9	651.3	656.1	659.2	667.4
Manufacturing	6,032.8	6,342.9	6,660.2	6,698.4	6,669.3	6,884.0
Electricity, Gas and air conditioning Supply	2,659.8	2,699.2	2,761.1	2,800.7	2,811.7	2,834.3
Water supply; sewerage, waste management and remediation activities	231.9	249.8	263.0	266.9	270.9	272.1
Construction	1,171.8	1,196.1	1,270.4	1,305.3	1,321.8	1,352.3
Wholesale and Retail Trade; Repair of Motor Vehicles, Motorcycles	2,429.2	2,586.0	2,678.4	2,711.0	2,626.1	2,666.4
Transport and Storage	6,624.1	7,108.1	7,305.8	7,273.1	7,126.4	7,066.9
Accommodation and food service activities	1,264.7	1,235.3	1,336.3	1,403.7	1,267.0	1,248.7
Information and communication	691.9	729.8	745.1	752.8	782.6	795.9
Financial and insurance activities	441.5	481.0	502.4	512.0	530.3	541.8
Real estate activities	7,572.0	7,346.2	7,228.1	7,347.5	7,356.2	7,489.1
Professional, scientific and technical activities	19.3	19.2	20.3	20.8	20.3	20.4
Administrative and support service activities	28.1	30.0	32.3	32.7	30.0	30.2
Public administration and defense; compulsory social security	537.2	584.2	601.6	615.2	630.0	646.1
Education	725.2	765.6	802.3	863.2	873.2	880.8
Human health and social work activities	1,428.5	1,469.7	1,497.2	1,541.7	1,607.3	1,658.1
Arts, entertainment and recreation	22.2	21.8	24.7	25.0	23.5	23.6
Other service activities	847.8	865.4	910.6	956.6	908.6	915.0
Total	36,102.4	37,081.2	38,265.9	38,815.7	38,461.0	38,992.7

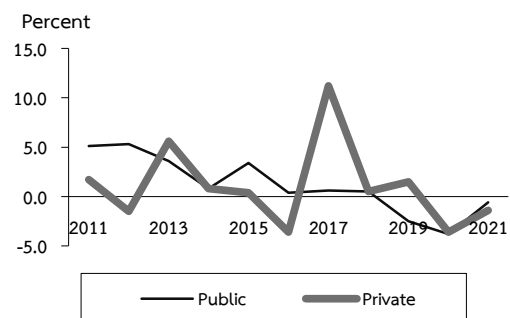
Figure 6 Growth Rate of Net Capital Stock by the Kind of Activity and Institutional Sector



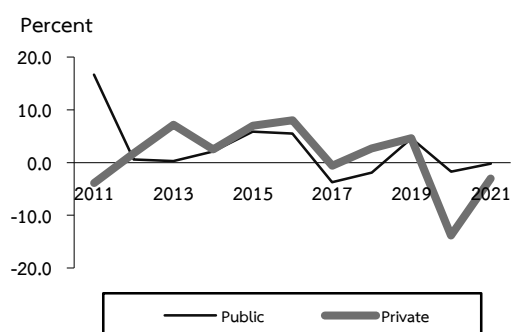
Wholesale and Retail Trade; Repair of
Motor Vehicles, Motorcycles



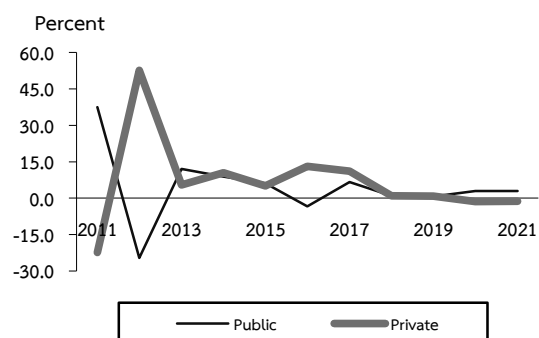
Transportation and storage



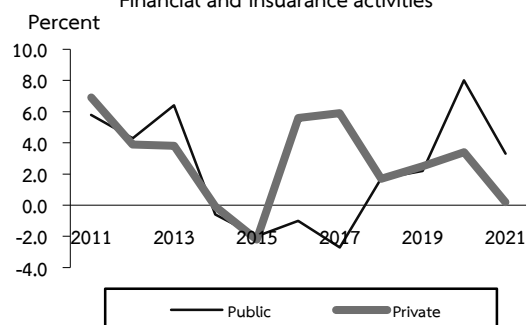
Accommodation and food service activities



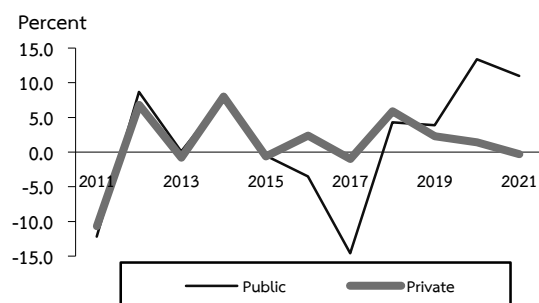
Information and communication



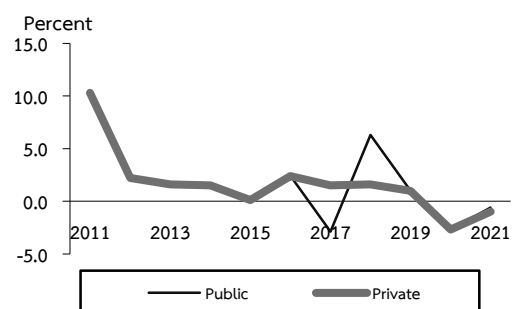
Financial and insurance activities



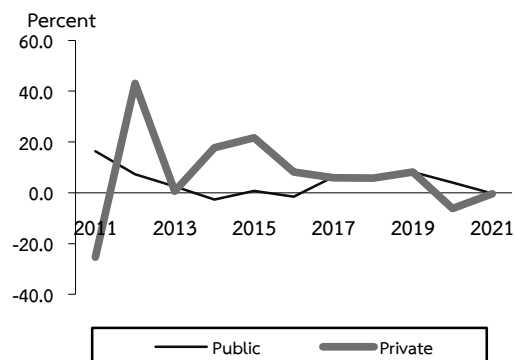
Real estate activities

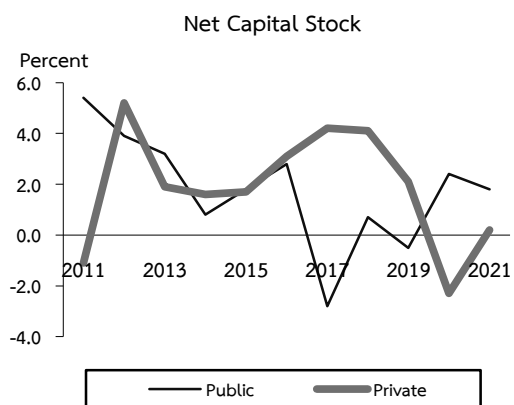
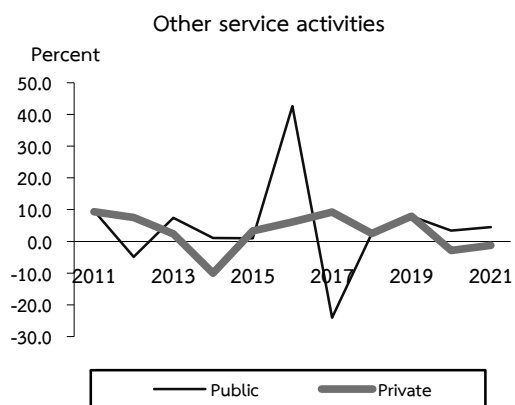
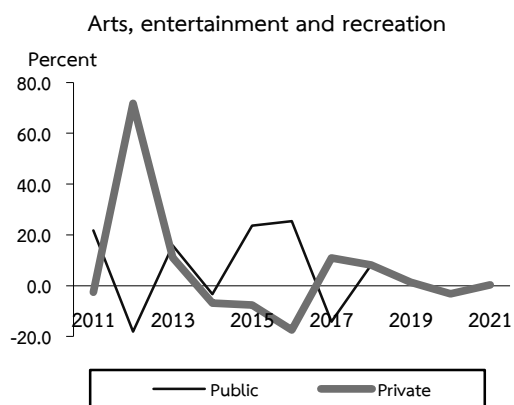
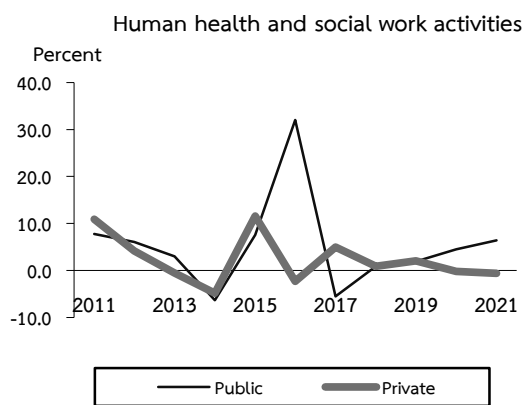
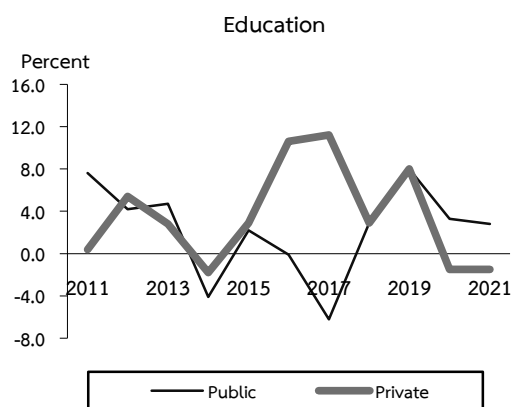
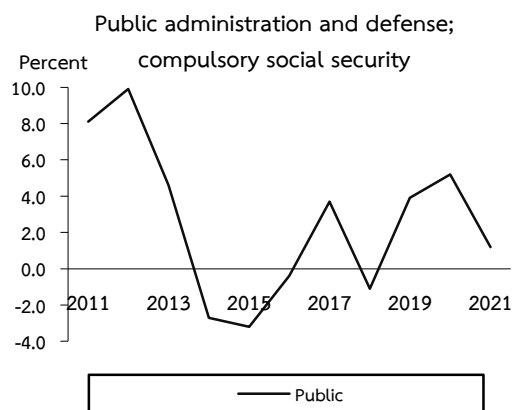


Professional, scientific and technical
activities



Administrative and support services

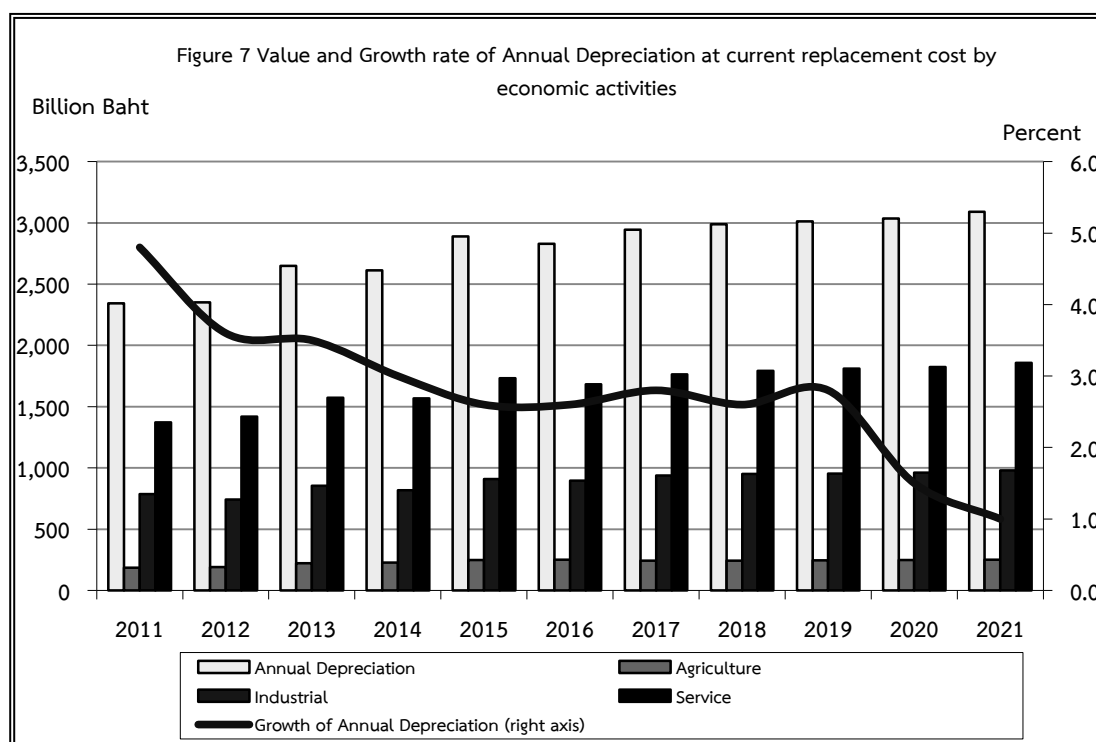




3. Depreciation

Overview

Annual depreciation at the current replacement cost was 3,089.2 billion baht, which accounted for 4.9% of gross capital stock at replacement cost. In real terms, the depreciation increased by 1.0%, slowing down from a growth of 1.5% in 2020. The deceleration resulted from a stagnant growth in most activities. This year's most considerable portion was held in the transportation and storage sector, with a value of 580.9 billion baht, representing 18.8% of its overall depreciation. In addition, the following sectors were manufacturing, recording a value of 561.7 billion baht; electricity, gas, steam, and air conditioning supply at 335.4 billion baht; and real estate activities at 315.9 billion baht, which accounted for 18.2%, 10.9%, and 10.2% of total depreciation, respectively. The minor contributors to overall depreciation were administrative and support service activities with a value of 4.5 billion baht, arts, entertainment, and recreation with 2.4 billion baht, and professional, scientific, and technical activities with 2.4 billion baht, where all three sectors held just about 0.1% of total depreciation.



4. Capital Factor Analysis

4.1 Incremental Capital Output Ratio: ICOR

Overview

In 2021, Thailand showed signs of recovery from the COVID-19 pandemic by easing COVID-19 restrictions and increasing domestic and external demand, so these positive factors stimulated production and investment. Consequently, ICOR for this year was 1.10, implying the increase in GDP of 1 unit required 1.10 additional units of capital.

ICOR by the kind of activity

Considering three main sectors, the ICOR of each sector was as follows.

Agriculture sector: In 2021, ICOR was 5.30, which was the highest score than the national average. This value implied that the increased capital of 5.30 would add the agriculture value-added by 1 unit. Considering the ICOR of the 12th development plan, ICOR had an approximate value of 1.3, showing the best capital usage efficiency compared to the eleventh plan with an ICOR of -0.08.

Industrial sector: ICOR in 2021 was 1.10. This year, the rise in consumer demand after governments decided to relax the lockdown mandatory and the acceleration in the private sector's investment to compensate for the loss during the outbreak caused production and investment to expand. This effect could be seen in the capital utilization rate, which improved to 63.0% in 2021 from 60.1% in 2020. When looking back since the eighth development plan, the 12th plan had the ICOR equal to 1.3, indicating better performance than the 11th and 9th plans, which registered -0.59 and 1.73, orderly. However, the 8th and 10th plans still exhibited higher use of capital with ICOR of 0.03 and 0.35, respectively.

Service sector: ICOR of the service sector in 2021 was 0.39. Despite the recovery in overall service sectors from the pandemic in the previous year, accommodation and food services activities and transportation and storage are still unable to be on the optimistic figure. After considering the development plan from the 8th to 12th, the current plan exhibited the most efficient use of capital with an ICOR of 0.9.

Table 3 Incremental Capital Output Ratio (ICOR)

	2016	2017	2018	2019	2020	2021
Agriculture	-10.47	1.88	1.77	-3.89	1.22	5.30
Non-Agriculture	1.67	1.37	1.87	1.34	0.34	0.91
● Industrial	2.71	3.25	2.86	-0.71	0.08	1.10
● Service	1.40	0.96	1.54	1.30	0.45	0.39
Total	2.02	1.42	1.86	1.54	0.37	1.10

Table 4 ICOR by National Economic and Social Development Plan

	8 th Plan	9 th Plan	10 th Plan	11 th Plan	12 th Plan
Agriculture	4.07	-21.28	-10.29	-0.08	1.26
Non-Agriculture	-1.45	1.51	1.81	1.90	1.16
● Industrial	0.03	1.73	0.35	-0.59	1.32
● Service	-1.41	1.25	10.30	1.86	0.93
Total	-1.05	1.64	1.18	2.23	1.26

4.2 Capital Productivity: CP

Overview

CP in 2021 was 0.39, representing that one unit of capital investment can create 0.39 units of GDP, higher than 0.38 in 2020. Over the last five development plans, CP continuously exhibited an upward trend. As mentioned, capital productivity increased from 0.31 in the eighth plan to 0.39 in the twelfth plan.

CP by the kind of activity

Agriculture sector: In 2021, the CP of the agricultural sector was 0.29. After comparing capital productivity to the national average with the value of 0.39 units, the agricultural sector had shown less efficiency in capital usage than other sectors. After considering back to the eighth development plan, the CP had continuously fallen from 0.48 units in the eighth plan to 0.29 units in the twelfth plan.

Industrial sector: CP of the industrial sector in 2021 was 0.46, the same rate as in 2020 but lower than 0.48 in 2019. After comparing it to the national average, the industrial sector outperformed other sectors regarding capital efficiency. After adjusting with capacity utilization to represent the actual capital productivity, it was found that CP attained 0.74, which is equal to the value before the pandemic started. Therefore, the industrial sector was still productive. However, considering each national development plan, the CP of the industrial sector has fallen since the tenth plan, in which the CP of each plan were 0.51, 0.50, and 0.48, orderly.

Service sector: CP was 0.37, unchanged from the previous year but lower than 0.39 in 2019. The figure for this year had capital productivity lower than the national average at 0.39. On the other hand, the CP of the service sector continued on the upward trend from 0.25 in the eighth development plan to 0.38 in the twelfth plan.

Table 5 Capital Productivity (CP)

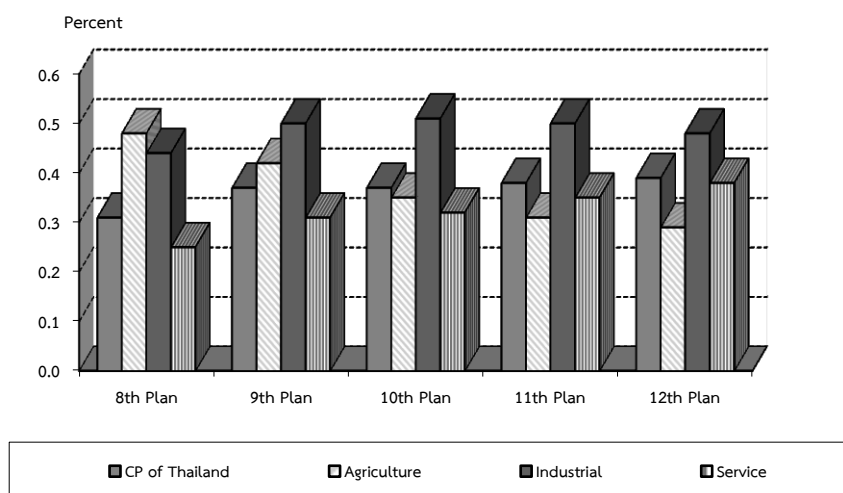
	2016	2017	2018	2019	2020	2021
Agriculture	0.28	0.29	0.30	0.29	0.29	0.29
Non-Agriculture	0.40	0.41	0.41	0.42	0.39	0.40
● Industrial	0.50	0.49	0.49	0.48	0.46	0.46
CAP U Adjusted*	0.74	0.72	0.71	0.74	0.76	0.74
● Service	0.36	0.38	0.38	0.39	0.37	0.37
Total	0.39	0.40	0.40	0.40	0.38	0.39
CAP U Adjusted*	0.43	0.43	0.44	0.44	0.43	0.43

*CAP U : Capital Utilizations

Table 6 CP by National Economic and Social development Plan

	Agriculture	Industrial	Service	Total
8 th Plan (1997 - 2001)	0.48	0.44	0.25	0.31
9 th Plan (2002 - 2006)	0.42	0.50	0.31	0.37
10 th Plan (2007 - 2011)	0.35	0.51	0.32	0.37
11 th Plan (2012 - 2016)	0.31	0.50	0.35	0.38
12 th Plan (2017 - 2020)	0.29	0.48	0.38	0.39

Figure 8 Capital Productivity



4.3 Total Factor Productivity: TFP

TFP is defined as the portion of GDP growth which was not caused by a partial increase in any single factor of production (labor, land, and capital). It would specifically refer to technological and administrative improvement, which accounted for an increase in output, typically measured as residuals.

Overview

In 2021, the Thai economy grew by 1.5%, rebounding from a fall of 6.2% in 2020, driven by all factors, namely TFP (1.05%), capital factor (0.41%), and labor factor (0.07%). The favorable result was partly from speeding up the production of goods to compensate for the loss during the COVID-19 pandemic in the previous year.

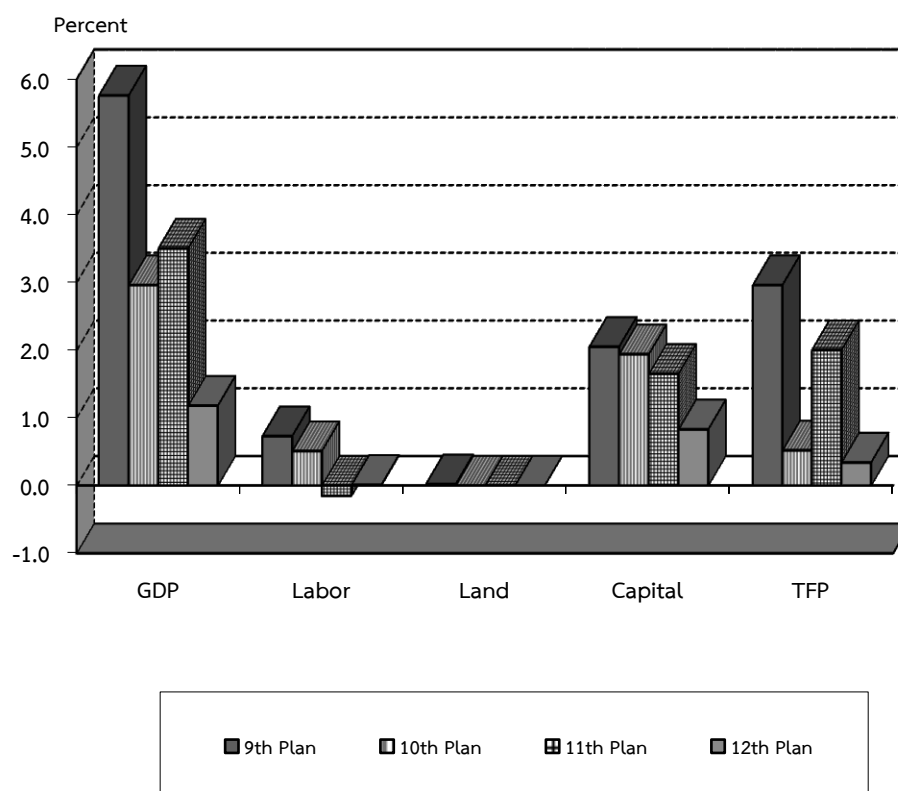
When considering the average growth of the twelfth plan, the Thai economy had an average growth of 1.18%. The primary source contributing to this growth was the capital factor which accounted for 0.83%, while TFP stayed at 0.34%. However, the labor and land factor had not attributed much to the growth. Compared to the previous plans, the twelfth plan showed an inferior result compared to the eleventh plan, in which the average growth and TFP were equal to 3.50% and 2.00%, respectively. However, the plan with the highest growth was the ninth development plan, of which the economic growth increased by 5.76% and TFP by 2.96%.

Table 7 Growth Rate of GDP and Sources of Growth

Unit : %

	9 th Plan	10 th Plan	11 th Plan	12 th Plan	12 th Plan				
					2017	2018	2019	2020	2021
GDP Growth	5.76	2.96	3.50	1.18	4.18	4.22	2.15	-6.20	1.53
Sources of Growth									
Labor	0.73	0.51	-0.15	0.01	-0.22	0.37	-0.23	0.06	0.07
Land	0.02	0.00	0.00	0.00	0.00	0.00	0.00	0.00	0.00
Capital	2.05	1.94	1.65	0.83	1.45	2.02	0.86	-0.59	0.41
TFP	2.96	0.52	2.00	0.34	2.95	1.83	1.53	-5.67	1.05

Figure 9 Sources of GDP Growth



TFP by the kind of activity

Agriculture

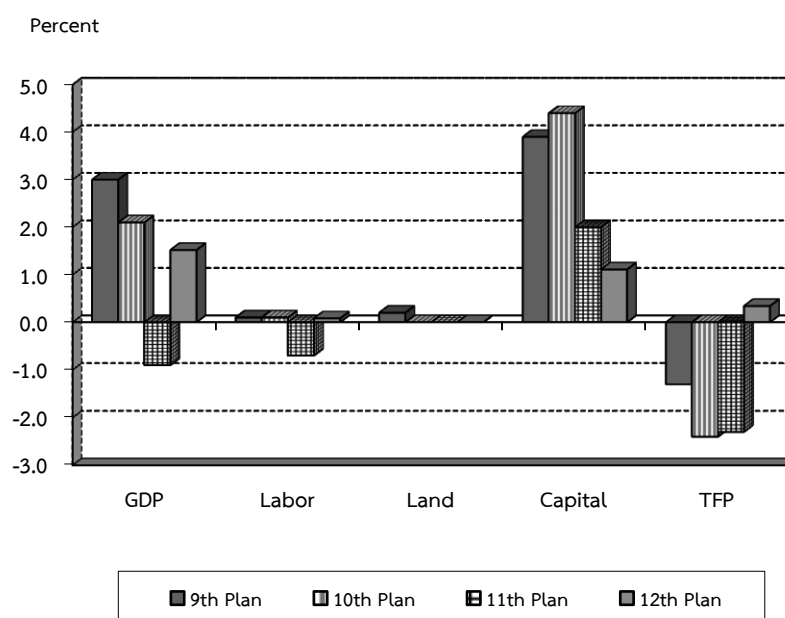
The agricultural sector grew by 0.98% in 2021, recovering from a reduction of 3.46% in 2020. When considering sources of growth, the factors that provided positive effects were capital and labor, with a growth of 1.16% and 0.29%, respectively; nonetheless, the TFP factor fell by 0.47%. For the twelfth development plan, the agriculture sector increased by 1.52%, contributed by the capital factor by 1.11%, TFP by 0.34%, and labor factor by 0.08%. From the perspective of the past economic and social development plan, the twelfth plan represented the highest TFP contributor. However, GDP showed the highest growth during the ninth development plan, recording a growth of 2.96%, supported mainly by the capital factor.

Table 8 Growth Rate of GDP and Sources of Growth in Agricultural sector

Unit : %

	9 th Plan	10 th Plan	11 th Plan	12 th Plan	12 th Plan				
					2017	2018	2019	2020	2021
GDP Growth	2.96	2.09	-0.91	1.52	4.85	6.10	-0.86	-3.46	0.98
Sources of Growth									
Labor	0.12	0.14	-0.66	0.08	0.05	0.49	-0.43	-0.01	0.29
Land	0.24	-0.01	0.00	0.00	0.00	0.00	0.00	0.00	0.00
Capital	3.86	4.37	2.02	1.11	2.09	2.47	0.78	-0.97	1.16
TFP	-1.26	-2.41	-2.27	0.34	2.72	3.14	-1.21	-2.48	-0.47

Figure 10 Sources of GDP Growth in Agricultural sector



Industrial

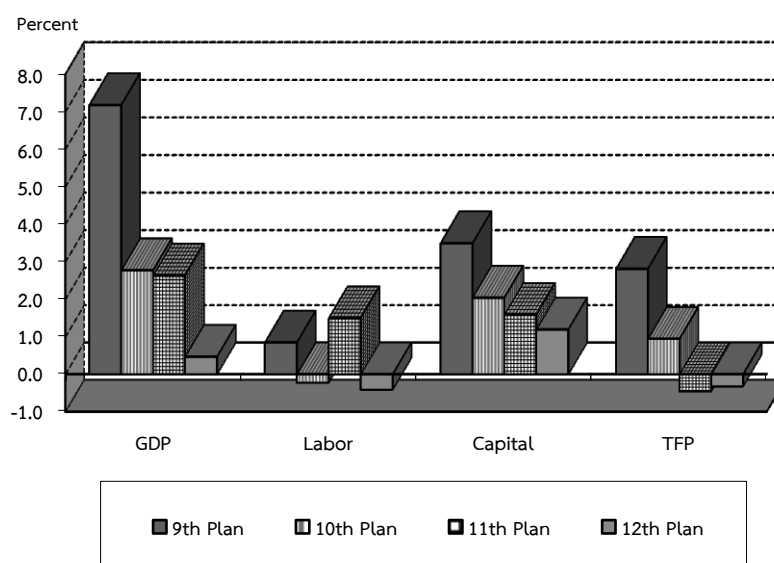
In 2021, the industrial sector increased by 3.40%, accelerating from a contraction of 5.95% in 2020. Regarding the sources of growth, the main contributors to this improvement were TFP (3.40%) and capital factor (1.14%). Contrarily, the labor factor showed a negative growth of 0.45%. In the perspective of the twelfth development plan, the industrial sector increased by 0.47%, contributed mainly by a 1.20% rise in the capital factor. In contrast, TFP and labor factor decreased by 0.32% and 0.41%, respectively. Considering GDP growth and TFP from the ninth development plan to the twelfth plan, they have continuously declined since the ninth plan, in which GDP and TFP increased by 7.18% and 2.82%, consecutively.

Table 9 Growth Rate of GDP and Sources of Growth in Industrial sector

Unit : %

	9 th Plan	10 th Plan	11 th Plan	12 th Plan	12 th Plan				
					2017	2018	2019	2020	2021
GDP Growth	7.18	2.78	2.64	0.47	2.13	2.90	-0.12	-5.95	3.40
Sources of Growth									
Labor	0.85	-0.22	1.50	-0.41	-0.88	0.65	-0.63	-0.71	-0.45
Capital	3.50	2.05	1.59	1.20	2.27	2.73	0.03	-0.15	1.14
TFP	2.82	0.95	-0.45	-0.32	0.73	-0.47	0.48	-5.09	2.72

Figure 11 Sources of GDP Growth in Industrial sector



Service

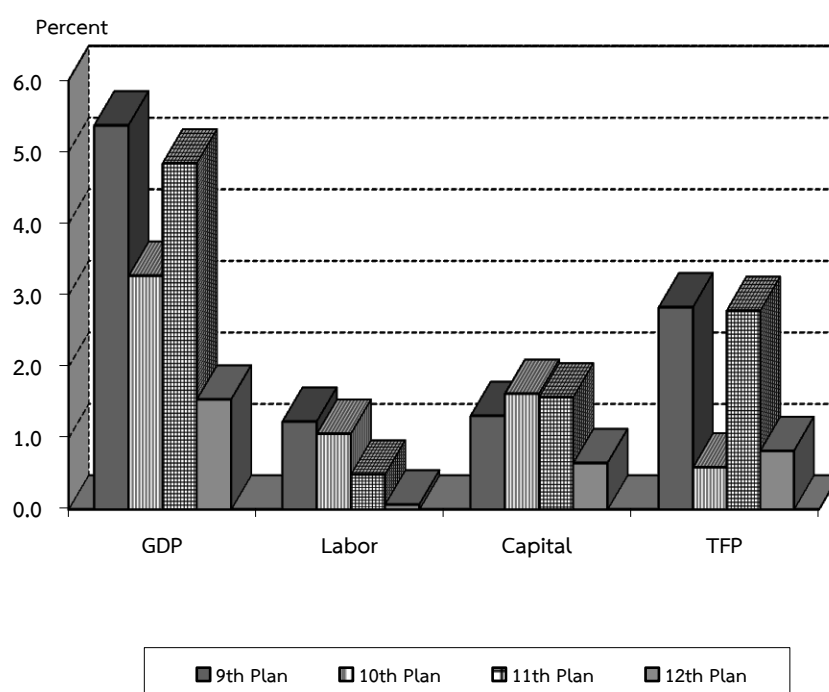
The service sector increased by 0.67% in 2021, recovering from a fall of 6.69% in 2020. Considering sources of growth, the main factor influencing the positive growth was TFP which grew by 0.73%, and the capital factor grew by 0.06%; in contrast, the labor factor dropped by 0.12%. Considering the average growth of the twelfth plan, it grew by 1.54%, mainly supported by 0.82% of TFP, 0.65% of capital factor, and 0.07% by labor factor. Regarding GDP growth and TFP over the four consecutive development plans, the highest growth in the service sector happened in the ninth plan, which expanded by 5.37%, and TFP by 2.83%.

Table 10 Growth Rate of GDP and Sources of Growth in Service sector

Unit : %

	9 th Plan	10 th Plan	11 th Plan	12 th Plan	12 th Plan				
					2017	2018	2019	2020	2021
GDP Growth	5.37	3.27	4.84	1.54	5.24	4.68	3.80	-6.69	0.67
Sources of Growth									
Labor	1.23	1.06	0.49	0.07	-0.19	-0.20	0.43	0.42	-0.12
Capital	1.31	1.62	1.57	0.65	1.06	1.68	1.17	-0.72	0.06
TFP	2.83	0.59	2.78	0.82	4.38	3.20	2.19	-6.38	0.73

Figure 12 Sources of Growth in Service sector



ANNEX



Concept, definitions and methodology of Capital Stock of Thailand

1. Definition

- **Capital** is the assets used as factors of production of goods and services, usually consisting of fixed and financial assets. However, it refers here to only fixed assets, defined as tangible assets produced within an economy that can be used repeatedly for more than one year. Newly produced assets can also replace them. Fixed assets consist of construction and equipment.

- **Gross Capital Stock (GCS)** is the sum of fixed assets **accumulated** over each asset's life as they are usually disposed of after a certain period of time when they can no longer provide the production service. GCS is generally measured at one point in time, specifically at the end of the year.

- **Net Capital Stock (NCS)** is the value of fixed assets after deducting depreciation.

- **Private Sector Capital Stock** consists of capital stocks owned by the private sector, covering both registered and non-registered ones, as well as fixed assets acquired by households and non-profit institutions. For the households sector, housing is the only asset considered as capital stock.

- **Public Sector Capital Stock** is all capital stock owned by the public sector, which consists of the central government, local municipalities, state-owned enterprises, all kinds of funds operated and controlled by the government, and independent agencies.

- **Depreciation** refers to the depletion of fixed assets. As fixed **assets** are used repeatedly in production, they become less productive, worn off, and downgraded as new technology emerges. Thus, depreciation should be deducted from fixed assets each year, by how much depending on the type of assets and their working life.

- **Service lifetime** is a period of time a fixed asset can be employed for production.

- **Retirement** of fixed assets from the production process takes place when they can no longer provide production service.

- **Incremental Capital Output Ratio: ICOR** is an indicator measuring investment capacity in an economic system. ICOR reflects how much additional investment is required for a 1 unit increase in GDP. The smaller the ICOR, the higher efficiency the last unit of investment provides.

$$\text{ICOR} = \frac{\Delta \text{NCS}_t}{\Delta \text{GDP}_t}$$

- **Capital Productivity: CP** measures units of products produced by 1 unit of capital.

$$\text{CP}_{it} = \frac{\text{GDP}_{it}}{\text{NCS}_{it}}$$

- **Total Factor Productivity: TFP** determines the proportion of GDP growth that is not a result of an increase in factors of production (labor, capital, and land). TFP measures the amount of GDP growth contributed by the residual or technical progress.

$$\begin{aligned} Y_t &= A_t f(K_t, L_t, N_t) \\ &= A K^\alpha L^\beta N^\delta \\ \frac{dY}{Y} &= \alpha \frac{dK}{K} + \beta \frac{dL}{L} + \delta \frac{dN}{N} + \frac{dA}{A} \\ \text{TFP} &= \frac{dY}{Y} - \alpha \frac{dK}{K} - \beta \frac{dL}{L} - \delta \frac{dN}{N} \end{aligned}$$

where

Y	=	Gross Domestic Product (GDP)
A	=	Constant Term
K	=	Capital Stock
L	=	Labor
N	=	Land
α	=	Income Share of Capital

$$\begin{aligned}\beta &= \text{Income Share of Labor} \\ \delta &= \text{Income Share of Land}\end{aligned}$$

2. Coverage

Capital stock covers all fixed assets employed for producing goods and services in an economic system, categorized by institution, e.g., private sector, public sector, which includes central government, local municipalities, and state-owned enterprises.

3. Methodology

Perpetual Inventory Method or PIM is applied here, which is an indirect method. This method is being used widely as this method draws primary data from the accumulation of capital stock compiled under the System of National Accounts. As a result, outcomes from PIM are consistent with other national income statistics. The basic concept is to calculate the value of all fixed assets in one year, which covers a capital stock in the first year and the additional capital acquired in the following years subtracted by those disposed of during the production process. The total value of fixed assets at the current price before deducting depreciation is **Gross Capital Stock**. In reality, however, all kinds of assets wear out during production, so the value of assets declines each year. A reduction in such value each year is called **Depreciation**. Thus, to find the value of capital stock in existence or **Net Capital Stock** is simply by deducting accumulated depreciation from gross capital stock. An alternative approach for the net capital stock is by adding last year's net capital stock with investment during the year, then subtracting by depreciation.

(1) Gross Capital Stock

$$GCS_t = \sum_{i=1}^n \sum_{t=1}^L GFCF_{it} * (1-\gamma_{it})$$

$$GCS = \text{Gross Capital Stock}$$

$$GFCF = \text{Gross Fixed Capital Formation}$$

$$i = \text{Type of Assets (i = 1,2,3,...,n)}$$

t = Year ($t = 1, 2, 3, \dots, L$)

L = Service Lifetime

γ = Rate of Retirement

(2) Net Capital Stock

$NCS_t = NCS_{t-1} + GFCF_t - COFC_t$

NCS = Net Capital Stock

$GFCF$ = Gross Fixed Capital Formation

$COFC$ = Annual Depreciation

ตารางสถิติ

STATISTICAL TABLES

TABLE

TABLE 1 GROSS CAPITAL STOCK OF THAILAND AT CURRENT REPLACEMENT COST

TABLE 2 GROSS CAPITAL STOCK OF THAILAND : CHAIN VOLUME MEASURES (reference year = 2002)

TABLE 3 GROSS CAPITAL STOCK OF PRIVATE SECTOR AT CURRENT REPLACEMENT COST

TABLE 4 GROSS CAPITAL STOCK OF PRIVATE SECTOR : CHAIN VOLUME MEASURES (reference year = 2002)

TABLE 5 GROSS CAPITAL STOCK OF PUBLIC SECTOR AT CURRENT REPLACEMENT COST

TABLE 6 GROSS CAPITAL STOCK OF PUBLIC SECTOR : CHAIN VOLUME MEASURES (reference year = 2002)

TABLE 7 NET CAPITAL STOCK OF THAILAND AT CURRENT REPLACEMENT COST

TABLE 8 NET CAPITAL STOCK OF THAILAND : CHAIN VOLUME MEASURES (reference year = 2002)

TABLE 9 NET CAPITAL STOCK OF PRIVATE SECTOR AT CURRENT REPLACEMENT COST

TABLE 10 NET CAPITAL STOCK OF PRIVATE SECTOR : CHAIN VOLUME MEASURES (reference year = 2002)

TABLE 11 NET CAPITAL STOCK OF PUBLIC SECTOR AT CURRENT REPLACEMENT COST

TABLE 12 NET CAPITAL STOCK OF PUBLIC SECTOR : CHAIN VOLUME MEASURES (reference year = 2002)

TABLE 13 ANNUAL DEPRECIATION OF THAILAND AT CURRENT REPLACEMENT COST

TABLE 14 ANNUAL DEPRECIATION OF THAILAND : CHAIN VOLUME MEASURES (reference year = 2002)

TABLE 15 ANNUAL DEPRECIATION OF PRIVATE SECTOR AT CURRENT REPLACEMENT COST

TABLE 16 ANNUAL DEPRECIATION OF PRIVATE SECTOR : CHAIN VOLUME MEASURES (reference year = 2002)

TABLE 17 ANNUAL DEPRECIATION OF PUBLIC SECTOR AT CURRENT REPLACEMENT COST

TABLE 18 ANNUAL DEPRECIATION OF PUBLIC SECTOR : CHAIN VOLUME MEASURES (reference year = 2002)

TABLE 1 GROSS CAPITAL STOCK OF THAILAND AT CURRENT REPLACEMENT COST

(Unit - Millions of Baht)

Sector	2008	2009	2010	2011	2012	2013	2014	2015	2016	2017	2018r	2019r	2020r	2021p
Agriculture	2,994,769	3,065,664	3,530,341	3,567,574	3,832,090	4,138,766	4,396,285	4,574,379	4,622,639	4,571,993	4,937,453	5,083,837	4,928,267	5,020,928
Agriculture, forestry and fishing	2,994,769	3,065,664	3,530,341	3,567,574	3,832,090	4,138,766	4,396,285	4,574,379	4,622,639	4,571,993	4,937,453	5,083,837	4,928,267	5,020,928
None Agriculture	36,804,452	36,733,567	39,710,382	43,549,029	46,388,673	48,714,230	50,353,887	52,095,986	52,608,866	54,528,399	56,155,855	57,091,012	56,579,700	58,456,258
Industrial	10,686,592	10,836,602	11,911,440	12,787,643	13,676,942	14,301,927	14,828,183	15,381,556	15,464,195	16,071,116	16,686,975	16,942,948	16,973,515	17,833,602
Mining and quarrying	531,843	537,779	599,007	647,909	694,787	719,185	750,879	776,146	778,178	821,059	894,106	931,542	953,426	973,167
Manufacturing	6,740,786	6,926,363	7,571,802	8,121,646	8,677,551	9,005,688	9,370,122	9,743,445	9,674,551	10,132,837	10,548,934	10,682,103	10,613,239	11,356,090
Electricity, gas, steam and air conditioning supply	3,083,880	2,984,407	3,381,931	3,631,765	3,898,282	4,166,464	4,286,451	4,430,479	4,569,212	4,649,651	4,758,603	4,837,119	4,910,489	4,999,096
Water supply; sewerage, waste management and remediation activities	330,083	388,053	358,700	386,322	406,322	410,590	420,731	431,487	442,254	467,569	485,333	492,184	496,362	505,248
Service	26,117,860	25,896,966	27,798,943	30,761,386	32,711,731	34,412,303	35,525,704	36,714,430	37,144,671	38,457,284	39,468,879	40,148,063	39,606,185	40,622,657
Construction	1,178,955	1,226,400	1,341,647	1,430,645	1,501,013	1,554,281	1,637,937	1,741,572	1,779,440	1,838,090	1,893,925	1,912,799	1,957,788	2,043,594
Wholesale and retail trade; repair of motor vehicles and motorcycles	2,960,567	2,963,648	3,194,963	3,424,759	3,635,776	3,835,913	3,978,409	4,144,586	4,187,887	4,497,457	4,680,054	4,777,767	4,599,110	4,722,480
Transportation and storage	7,248,965	7,441,463	7,940,666	8,549,033	8,995,057	9,565,394	9,876,086	10,428,050	10,466,529	11,258,691	11,715,075	11,703,819	11,506,168	11,497,349
Accommodation and food service activities	1,468,397	1,522,250	1,597,012	1,725,785	1,851,359	1,951,058	2,013,612	2,090,257	2,089,788	2,061,467	2,209,974	2,302,752	1,872,128	1,772,127
Information and communication	636,657	680,791	687,858	723,262	829,900	969,587	1,110,594	1,220,421	1,231,653	1,320,030	1,370,769	1,386,597	1,407,980	1,441,892
Financial and insurance activities	504,466	505,685	556,638	597,962	634,753	668,813	692,680	721,474	734,401	804,420	842,545	861,584	886,105	918,202
Real estate activities	8,233,542	7,703,479	8,290,396	9,543,417	10,075,293	10,529,880	10,718,131	10,676,397	10,931,436	10,689,160	10,542,400	10,790,644	10,921,037	11,530,918
Professional, scientific and technical activities	21,316	21,587	22,994	23,729	24,458	25,795	27,064	29,237	31,193	31,590	33,877	34,857	35,109	35,639
Administrative and support service activities+2	29,070	30,367	31,773	32,319	36,317	38,198	41,020	44,773	45,956	48,544	51,270	52,414	51,832	52,546
Public administration and defence; compulsory social security	618,859	621,862	668,188	723,962	766,890	833,388	859,264	904,021	916,886	1,012,383	1,067,275	1,110,127	1,126,128	1,177,855
Education	776,149	778,099	841,507	956,044	1,021,293	1,052,333	1,087,024	1,118,229	1,141,558	1,211,336	1,261,461	1,303,775	1,325,546	1,343,162
Human health and social work activities	1,527,244	1,499,561	1,659,524	1,967,340	2,089,214	2,114,591	2,196,904	2,301,088	2,286,436	2,348,179	2,376,545	2,417,531	2,501,333	2,646,628
Arts, entertainment and recreation	22,226	24,212	25,347	25,935	30,288	33,861	34,618	35,715	35,462	35,293	36,978	37,759	37,343	38,015
Other service activities	891,447	877,560	940,431	1,037,194	1,220,122	1,239,211	1,252,362	1,258,611	1,266,046	1,300,644	1,386,732	1,455,637	1,378,578	1,402,250
Activities of households as employers	-	-	-	-	-	-	-	-	-	-	-	-	-	-
TOTAL	39,799,221	39,799,231	43,240,723	47,116,603	50,220,763	52,852,996	54,750,172	56,670,366	57,231,505	59,100,393	61,093,308	62,174,849	61,507,967	63,477,186

TABLE 1-1 GROWTH RATE OF GROSS CAPITAL STOCK OF THAILAND AT CURRENT REPLACEMENT COST

(Unit - Millions of Baht)

Sector	2008	2009	2010	2011	2012	2013	2014	2015	2016r	2017r	2018r	2019r	2020r	2021p
Agriculture	13.5	2.4	15.2	1.1	7.4	8.0	6.2	4.1	1.1	-1.1	8.0	3.0	-3.1	1.9
Agriculture, forestry and fishing	13.5	2.4	15.2	1.1	7.4	8.0	6.2	4.1	1.1	-1.1	8.0	3.0	-3.1	1.9
None Agriculture	10.3	-0.2	8.1	9.7	6.5	5.0	3.4	3.5	1.0	3.6	3.0	1.7	-0.9	3.3
Industrial	9.5	1.4	9.9	7.4	7.0	4.6	3.7	3.7	0.5	3.9	3.8	1.5	0.2	5.1
Mining and quarrying	7.4	1.1	11.4	8.2	7.2	3.5	4.4	3.4	0.3	5.5	8.9	4.2	2.3	2.1
Manufacturing	7.3	2.8	9.3	7.3	6.8	3.8	4.0	4.0	-0.7	4.7	4.1	1.3	-0.6	7.0
Electricity, gas, steam and air conditioning supply	15.2	-3.2	13.3	7.4	7.3	6.9	2.9	3.4	3.1	1.8	2.3	1.6	1.5	1.8
Water supply; sewerage, waste management and remediation activities	8.9	17.6	-7.6	7.7	5.2	1.1	2.5	2.6	2.5	5.7	3.8	1.4	0.8	1.8
Service	10.7	-0.8	7.3	10.7	6.3	5.2	3.2	3.3	1.2	3.5	2.6	1.7	-1.3	2.6
Construction	5.6	4.0	9.4	6.6	4.9	3.5	5.4	6.3	2.2	3.3	3.0	1.0	2.4	4.4
Wholesale and retail trade; repair of motor vehicles and motorcycles	8.4	0.1	7.8	7.2	6.2	5.5	3.7	4.2	1.0	7.4	4.1	2.1	-3.7	2.7
Transportation and storage	13.4	2.7	6.7	7.7	5.2	6.3	3.2	5.6	0.4	7.6	4.1	-0.1	-1.7	-0.1
Accommodation and food service activities	8.9	3.7	4.9	8.1	7.3	5.4	3.2	3.8	-0.0	-1.4	7.2	4.2	-18.7	-5.3
Information and communication	1.6	6.9	1.0	5.1	14.7	16.8	14.5	9.9	0.9	7.2	3.8	1.2	1.5	2.4
Financial and insurance activities	8.1	0.2	10.1	7.4	6.2	5.4	3.6	4.2	1.8	9.5	4.7	2.3	2.8	3.6
Real estate activities	11.3	-6.4	7.6	15.1	5.6	4.5	1.8	-0.4	2.4	-2.2	-1.4	2.4	1.2	5.6
Professional, scientific and technical activities	0.2	1.3	6.5	3.2	3.1	5.5	4.9	8.0	6.7	1.3	7.2	2.9	0.7	1.5
Administrative and support service activities	8.0	4.5	4.6	1.7	12.4	5.2	7.4	9.2	2.6	5.6	5.6	2.2	-1.1	1.4
Public administration and defence; compulsory social security	15.1	0.5	7.4	8.3	5.9	8.7	3.1	5.2	1.4	10.4	5.4	4.0	1.4	4.6
Education	11.0	0.3	8.1	13.6	6.8	3.0	3.3	2.9	2.1	6.1	4.1	3.4	1.7	1.3
Human health and social work activities	10.4	-1.8	10.7	18.5	6.2	1.2	3.9	4.7	-0.6	2.7	1.2	1.7	3.5	5.8
Arts, entertainment and recreation	5.2	8.9	4.7	2.3	16.8	11.8	2.2	3.2	-0.7	-0.5	4.8	2.1	-1.1	1.8
Other service activities	7.3	-1.6	7.2	10.3	17.6	1.6	1.1	0.5	0.6	2.7	6.6	5.0	-5.3	1.7
Activities of households as employers	-	-	-	-	-	-	-	-	-	-	-	-	-	-
TOTAL	10.5	0.0	8.6	9.0	6.6	5.2	3.6	3.5	1.0	3.3	3.4	1.8	-1.1	3.2

TABLE 2 GROSS CAPITAL STOCK OF THAILAND : CHAIN VOLUME MEASURES (reference year = 2002)

(Unit - Millions of Baht)

Sector	2008	2009	2010	2011	2012	2013	2014	2015	2016	2017	2018r	2019r	2020r	2021p
Agriculture	2,605,722	2,671,206	2,767,999	2,887,203	3,156,356	3,239,765	3,285,734	3,444,035	3,622,272	3,728,091	3,896,338	3,999,732	3,886,688	3,930,331
Agriculture, forestry and fishing	2,605,722	2,671,206	2,767,999	2,887,203	3,156,356	3,239,765	3,285,734	3,444,035	3,622,272	3,728,091	3,896,338	3,999,732	3,886,688	3,930,331
None Agriculture	29,388,843	29,667,032	31,778,887	33,298,618	34,028,886	35,165,756	35,782,316	36,360,986	37,297,107	38,031,779	39,064,120	39,583,925	39,225,055	40,181,770
Industrial	8,672,967	8,536,610	9,015,084	9,357,654	10,048,288	10,457,024	10,501,770	10,749,061	10,962,976	11,471,160	11,779,663	11,948,271	11,986,047	12,497,201
Mining and quarrying	506,866	531,356	546,164	578,465	652,569	684,921	711,720	710,534	690,106	717,930	738,266	761,520	777,240	791,606
Manufacturing	5,575,585	5,509,998	5,810,224	5,961,271	6,509,013	6,780,388	6,717,807	6,896,637	7,073,131	7,414,159	7,685,386	7,798,151	7,769,443	8,270,938
Electricity, gas, steam and air conditioning supply	2,310,707	2,193,641	2,387,426	2,535,971	2,608,984	2,713,738	2,784,237	2,845,169	2,892,393	3,012,475	3,032,896	3,064,781	3,108,444	3,119,885
Water supply; sewerage, waste management and remediation activities	259,747	292,654	255,972	263,064	269,857	272,239	277,504	282,238	285,858	304,802	309,206	312,950	315,970	317,942
Service	20,703,857	21,113,211	22,749,880	23,933,574	23,941,848	24,669,480	25,237,898	25,568,349	26,289,216	26,515,303	27,237,813	27,588,655	27,196,171	27,646,728
Construction	944,527	928,411	1,009,321	1,031,005	1,084,379	1,128,067	1,136,788	1,250,842	1,369,669	1,367,249	1,410,920	1,430,807	1,464,326	1,514,911
Wholesale and retail trade; repair of motor vehicles and motorcycles	2,474,498	2,421,468	2,587,119	2,665,391	2,443,431	2,439,475	2,407,101	2,532,220	2,603,182	2,659,463	2,728,732	2,793,251	2,691,805	2,727,864
Transportation and storage	5,838,304	5,988,781	6,476,019	6,721,660	7,047,176	7,444,860	7,585,751	7,842,375	7,865,369	8,276,722	8,509,849	8,360,513	8,162,574	8,142,486
Accommodation and food service activities	1,164,123	1,166,982	1,212,509	1,207,940	1,272,773	1,374,754	1,406,235	1,496,585	1,565,465	1,530,178	1,557,947	1,632,207	1,373,205	1,292,287
Information and communication	513,421	519,871	510,079	523,770	608,490	636,137	695,314	744,011	763,000	824,533	843,082	854,264	867,049	875,896
Financial and insurance activities	404,007	417,897	435,347	450,244	385,730	404,900	408,745	403,236	408,296	428,946	437,639	446,757	460,201	470,274
Real estate activities	6,359,151	6,750,497	7,396,918	8,016,496	7,563,651	7,591,429	8,098,576	7,547,799	7,549,418	7,190,222	7,402,237	7,541,730	7,604,656	7,926,786
Professional, scientific and technical activities	16,293	16,046	17,411	19,148	19,524	20,096	20,574	20,809	21,605	21,854	22,618	23,507	23,852	23,862
Administrative and support service activities	24,424	24,861	26,521	27,474	30,083	30,683	30,865	32,118	32,819	34,623	35,857	37,446	37,588	37,737
Public administration and defence; compulsory social security	466,980	488,640	532,563	567,801	611,124	648,835	647,814	635,001	658,544	693,063	711,697	738,658	748,658	771,968
Education	607,342	584,699	622,454	664,244	696,400	722,819	709,337	729,181	776,635	818,583	844,124	874,173	892,691	894,199
Human health and social work activities	1,095,446	1,036,138	1,132,514	1,229,479	1,269,805	1,288,249	1,220,987	1,353,848	1,541,641	1,552,589	1,581,006	1,601,970	1,631,411	1,705,931
Arts, entertainment and recreation	19,005	20,007	21,197	19,821	19,520	22,506	21,565	22,821	23,967	23,018	24,034	25,775	25,647	25,965
Other service activities	733,821	700,095	728,950	767,103	806,842	843,137	800,967	823,076	924,368	915,578	946,523	1,024,159	1,007,089	1,019,459
Activities of households as employers	-	-	-	-	-	-	-	-	-	-	-	-	-	-
TOTAL	31,986,354	32,326,834	34,541,000	36,179,405	37,167,649	38,390,098	39,053,137	39,785,070	40,892,866	41,729,796	42,920,577	43,537,589	43,074,535	44,079,715

TABLE 2-1 GROWTH RATE OF GROSS CAPITAL STOCK OF THAILAND : CHAIN VOLUME MEASURES (reference year = 2002)

(Unit - Millions of Baht)

Sector	2008	2009	2010	2011	2012	2013	2014	2015	2016	2017	2018r	2019r	2020r	2021p
Agriculture	7.2	2.5	3.6	4.3	9.3	2.6	1.4	4.8	5.2	2.9	4.5	2.7	-2.8	1.1
Agriculture, forestry and fishing	7.2	2.5	3.6	4.3	9.3	2.6	1.4	4.8	5.2	2.9	4.5	2.7	-2.8	1.1
None Agriculture	6.0	0.9	7.1	4.8	2.2	3.3	1.8	1.6	2.6	2.0	2.7	1.3	-0.9	2.4
Industrial	4.1	-1.6	5.6	3.8	7.4	4.1	0.4	2.4	2.0	4.6	2.7	1.4	0.3	4.3
Mining and quarrying	4.9	4.8	2.8	5.9	12.8	5.0	3.9	-0.2	-2.9	4.0	2.8	3.1	2.1	1.8
Manufacturing	2.2	-1.2	5.4	2.6	9.2	4.2	-0.9	2.7	2.6	4.8	3.7	1.5	-0.4	6.5
Electricity, gas, steam and air conditioning supply	8.8	-5.1	8.8	6.2	2.9	4.0	2.6	2.2	1.7	4.2	0.7	1.1	1.4	0.4
Water supply; sewerage, waste management and remediation activities	1.0	12.7	-12.5	2.8	2.6	0.9	1.9	1.7	1.3	6.6	1.4	1.2	1.0	0.6
Service	6.8	2.0	7.8	5.2	0.0	3.0	2.3	1.3	2.8	0.9	2.7	1.3	-1.4	1.7
Construction	-2.3	-1.7	8.7	2.1	5.2	4.0	0.8	10.0	9.5	-0.2	3.2	1.4	2.3	3.5
Wholesale and retail trade; repair of motor vehicles and motorcycles	5.5	-2.1	6.8	3.0	-8.3	-0.2	-1.3	5.2	2.8	2.2	2.6	2.4	-3.6	1.3
Transportation and storage	11.3	2.6	8.1	3.8	4.8	5.6	1.9	3.4	0.3	5.2	2.8	-1.8	-2.4	-0.2
Accommodation and food service activities	4.1	0.2	3.9	-0.4	5.4	8.0	2.3	6.4	4.6	-2.3	1.8	4.8	-15.9	-5.9
Information and communication	-1.5	1.3	-1.9	2.7	16.2	4.5	9.3	7.0	2.6	8.1	2.2	1.3	1.5	1.0
Financial and insurance activities	6.4	3.4	4.2	3.4	-14.3	5.0	0.9	-1.3	1.3	5.1	2.0	2.1	3.0	2.2
Real estate activities	6.8	6.2	9.6	8.4	-5.6	0.4	6.7	-6.8	0.0	-4.8	2.9	1.9	0.8	4.2
Professional, scientific and technical activities	-4.3	-1.5	8.5	10.0	2.0	2.9	2.4	1.1	3.8	1.2	3.5	3.9	1.5	0.0
Administrative and support service activities	6.1	1.8	6.7	3.6	9.5	2.0	0.6	4.1	2.2	5.5	3.6	4.4	0.4	0.4
Public administration and defence; compulsory social security	13.8	4.6	9.0	6.6	7.6	6.2	-0.2	-2.0	3.7	5.2	2.7	3.8	1.4	3.1
Education	3.7	-3.7	6.5	6.7	4.8	3.8	-1.9	2.8	6.5	5.4	3.1	3.6	2.1	0.2
Human health and social work activities	4.6	-5.4	9.3	8.6	3.3	1.5	-5.2	10.9	13.9	0.7	1.8	1.3	1.8	4.6
Arts, entertainment and recreation	4.1	5.3	5.9	-6.5	-1.5	15.3	-4.2	5.8	5.0	-4.0	4.4	7.2	-0.5	1.2
Other service activities	2.6	-4.6	4.1	5.2	5.2	4.5	-5.0	2.8	12.3	-1.0	3.4	8.2	-1.7	1.2
Activities of households as employers	-	-	-	-	-	-	-	-	-	-	-	-	-	-
TOTAL	6.1	1.1	6.8	4.7	2.7	3.3	1.7	1.9	2.8	2.0	2.9	1.4	-1.1	2.3

TABLE 3 GROSS CAPITAL STOCK OF PRIVATE SECTOR AT CURRENT REPLACEMENT COST

(Unit - Millions of Baht)

Sector	2008	2009	2010	2011	2012	2013	2014	2015	2016	2017	2018r	2019r	2020r	2021p
Agriculture	1,341,477	1,411,156	1,632,500	1,633,521	1,742,988	1,861,948	1,992,968	2,074,161	2,206,016	2,473,083	2,671,261	2,752,389	2,469,062	2,480,339
Agriculture, forestry and fishing	1,341,477	1,411,156	1,632,500	1,633,521	1,742,988	1,861,948	1,992,968	2,074,161	2,206,016	2,473,083	2,671,261	2,752,389	2,469,062	2,480,339
None Agriculture	26,378,969	26,327,256	28,181,958	30,791,874	32,851,189	34,414,773	35,537,387	36,609,223	36,748,433	38,674,147	39,911,250	40,885,739	40,033,121	41,349,655
Industrial	7,933,662	8,114,282	8,779,939	9,436,755	10,113,314	10,535,517	10,948,841	11,425,044	11,384,730	11,995,327	12,612,476	12,898,166	12,762,064	13,512,844
Mining and quarrying	446,455	453,552	505,346	544,205	581,912	601,289	628,914	651,062	653,483	695,470	757,343	779,738	797,102	807,729
Manufacturing	6,386,827	6,549,084	7,152,021	7,695,097	8,228,748	8,535,411	8,862,917	9,208,140	9,144,289	9,613,225	10,124,023	10,358,649	10,260,030	10,969,983
Electricity, gas, steam and air conditioning supply	991,224	983,320	1,003,953	1,069,700	1,168,288	1,263,039	1,317,878	1,423,154	1,440,709	1,527,336	1,570,615	1,597,018	1,550,718	1,580,779
Water supply; sewerage, waste management and remediation activities	109,155	128,325	118,619	127,753	134,366	135,778	139,132	142,688	146,249	159,296	160,495	162,760	154,215	154,353
Service	18,445,307	18,212,975	19,402,019	21,355,119	22,737,875	23,879,256	24,588,547	25,184,179	25,363,703	26,678,820	27,298,774	27,987,573	27,271,057	27,836,811
Construction	578,549	641,481	676,834	720,974	770,425	801,760	832,186	873,224	924,401	991,631	1,043,837	1,092,495	982,712	984,174
Wholesale and retail trade; repair of motor vehicles and motorcycles	2,933,508	2,937,272	3,166,592	3,394,244	3,603,599	3,801,620	3,942,444	4,106,994	4,150,698	4,459,858	4,640,929	4,747,381	4,570,136	4,692,256
Transportation and storage	3,337,134	3,495,776	3,619,038	3,825,863	3,876,779	4,167,546	4,304,097	4,469,462	4,383,487	4,993,117	5,195,519	5,307,565	5,223,800	5,196,802
Accommodation and food service activities	1,000,169	1,040,823	1,085,904	1,098,393	1,183,204	1,276,694	1,319,339	1,374,574	1,385,467	1,381,101	1,502,694	1,565,779	1,218,007	1,141,250
Information and communication	357,967	375,300	392,691	310,366	500,712	570,825	657,805	719,743	772,702	840,727	873,043	883,553	882,803	889,503
Financial and insurance activities	413,677	414,718	454,984	489,683	519,437	544,896	564,895	588,181	605,683	673,018	704,916	721,189	736,353	759,031
Real estate activities	7,535,584	7,039,054	7,556,447	8,711,231	9,182,722	9,589,457	9,762,180	9,723,315	10,006,418	9,899,338	9,773,964	9,993,324	10,026,604	10,488,523
Professional, scientific and technical activities	14,017	14,195	15,120	15,603	16,083	16,962	17,796	19,225	20,512	21,089	22,277	22,921	23,087	23,399
Administrative and support service activities	6,272	7,770	6,943	4,919	7,015	7,267	9,078	11,440	12,579	13,252	13,996	14,309	13,113	13,289
Public administration and defence; compulsory social security	-	-	-	-	-	-	-	-	-	-	-	-	-	-
Education	529,256	531,823	570,323	633,246	679,048	695,319	724,013	746,541	787,378	878,170	914,509	945,185	948,163	948,944
Human health and social work activities	1,040,053	1,025,580	1,125,406	1,346,250	1,421,125	1,422,422	1,485,678	1,574,657	1,408,673	1,504,971	1,523,151	1,550,242	1,577,691	1,626,882
Arts, entertainment and recreation	10,371	11,541	11,319	10,177	17,428	19,143	19,257	17,281	13,535	15,655	16,402	16,749	16,527	16,863
Other service activities	688,750	677,643	720,417	794,169	960,297	965,346	949,779	959,540	892,170	1,006,894	1,073,538	1,126,882	1,052,062	1,055,894
Activities of households as employers	-	-	-	-	-	-	-	-	-	-	-	-	-	-
TOTAL	27,720,446	27,738,412	29,814,459	32,425,395	34,594,177	36,276,721	37,530,355	38,683,384	38,954,449	41,147,230	42,582,511	43,638,128	42,502,183	43,829,994

TABLE 3-1 GROWTH RATE OF GROSS CAPITAL STOCK OF PRIVATE SECTOR AT CURRENT REPLACEMENT COST

(Unit - Percentage)

Sector	2008	2009	2010	2011	2012	2013	2014	2015	2016	2017	2018r	2019r	2020r	2021p
Agriculture	5.3	5.2	15.7	0.1	6.7	6.8	7.0	4.1	6.4	12.1	8.0	3.0	-10.3	0.5
Agriculture, forestry and fishing	5.3	5.2	15.7	0.1	6.7	6.8	7.0	4.1	6.4	12.1	8.0	3.0	-10.3	0.5
None Agriculture	9.2	-0.2	7.0	9.3	6.7	4.8	3.3	3.0	0.4	5.2	3.2	2.4	-2.1	3.3
Industrial	8.7	2.3	8.2	7.5	7.2	4.2	3.9	4.3	-0.4	5.4	5.1	2.3	-1.1	5.9
Mining and quarrying	5.4	1.6	11.4	7.7	6.9	3.3	4.6	3.5	0.4	6.4	8.9	3.0	2.2	1.3
Manufacturing	7.0	2.5	9.2	7.6	6.9	3.7	3.8	3.9	-0.7	5.1	5.3	2.3	-1.0	6.9
Electricity, gas, steam and air conditioning supply	23.8	-0.8	2.1	6.5	9.2	8.1	4.3	8.0	1.2	6.0	2.8	1.7	-2.9	1.9
Water supply; sewerage, waste management and remediation activities	8.9	17.6	-7.6	7.7	5.2	1.1	2.5	2.6	2.5	8.9	0.8	1.4	-5.3	0.1
Service	9.3	-1.3	6.5	10.1	6.5	5.0	3.0	2.4	0.7	5.2	2.3	2.5	-2.6	2.1
Construction	-1.8	10.9	5.5	6.5	6.9	4.1	3.8	4.9	5.9	7.3	5.3	4.7	-10.0	0.1
Wholesale and retail trade; repair of motor vehicles and motorcycles	8.4	0.1	7.8	7.2	6.2	5.5	3.7	4.2	1.1	7.4	4.1	2.3	-3.7	2.7
Transportation and storage	11.6	4.8	3.5	5.7	1.3	7.5	3.3	3.8	-1.9	13.9	4.1	2.2	-1.6	-0.5
Accommodation and food service activities	7.0	4.1	4.3	1.2	7.7	7.9	3.3	4.2	0.8	-0.3	8.8	4.2	-22.2	-6.3
Information and communication	9.8	4.8	4.6	-21.0	61.3	14.0	15.2	9.4	7.4	8.8	3.8	1.2	-0.1	0.8
Financial and insurance activities	6.9	0.3	9.7	7.6	6.1	4.9	3.7	4.1	3.0	11.1	4.7	2.3	2.1	3.1
Real estate activities	10.7	-6.6	7.4	15.3	5.4	4.4	1.8	-0.4	2.9	-1.1	-1.3	2.2	0.3	4.6
Professional, scientific and technical activities	0.2	1.3	6.5	3.2	3.1	5.5	4.9	8.0	6.7	2.8	5.6	2.9	0.7	1.4
Administrative and support service activities	-12.3	23.9	-10.6	-29.1	42.6	3.6	24.9	26.0	10.0	5.4	5.6	2.2	-8.4	1.3
Public administration and defence; compulsory social security	-	-	-	-	-	-	-	-	-	-	-	-	-	-
Education	9.0	0.5	7.2	11.0	7.2	2.4	4.1	3.1	5.5	11.5	4.1	3.4	0.3	0.1
Human health and social work activities	8.4	-1.4	9.7	19.6	5.6	0.1	4.4	6.0	-10.5	6.8	1.2	1.8	1.8	3.1
Arts, entertainment and recreation	30.7	11.3	-1.9	-10.1	71.3	9.8	0.6	-10.3	-21.7	15.7	4.8	2.1	-1.3	2.0
Other service activities	4.9	-1.6	6.3	10.2	20.9	0.5	-1.6	1.0	-7.0	12.9	6.6	5.0	-6.6	0.4
Activities of households as employers	-	-	-	-	-	-	-	-	-	-	-	-	-	-
TOTAL	9.0	0.1	7.5	8.8	6.7	4.9	3.5	3.1	0.7	5.6	3.5	2.5	-2.6	3.1

TABLE 4 GROSS CAPITAL STOCK OF PRIVATE SECTOR : CHAIN VOLUME MEASURES (reference year = 2002)

(Unit - Millions of Baht)

Sector	2008	2009	2010	2011	2012	2013	2014	2015	2016	2017	2018r	2019r	2020r	2021p
Agriculture	1,167,208	1,229,584	1,279,979	1,321,993	1,435,637	1,457,505	1,489,521	1,561,628	1,728,620	2,016,598	2,107,996	2,165,454	1,947,230	1,941,583
Agriculture, forestry and fishing	1,167,208	1,229,584	1,279,979	1,321,993	1,435,637	1,457,505	1,489,521	1,561,628	1,728,620	2,016,598	2,107,996	2,165,454	1,947,230	1,941,583
None Agriculture	21,182,148	21,513,142	22,804,855	23,725,508	24,085,315	24,794,832	25,223,414	25,481,333	25,981,319	26,857,804	27,750,081	28,377,194	27,799,527	28,464,222
Industrial	6,550,617	6,486,874	6,748,567	6,974,222	7,591,665	7,913,263	7,900,253	8,130,837	8,285,804	8,755,854	9,122,423	9,331,567	9,251,266	9,736,312
Mining and quarrying	425,489	448,135	460,765	485,875	546,552	572,642	596,116	596,025	579,524	608,116	625,341	637,423	649,804	657,033
Manufacturing	5,282,810	5,209,868	5,488,105	5,648,185	6,172,366	6,426,316	6,354,172	6,517,735	6,685,452	7,033,960	7,375,817	7,562,022	7,510,875	7,989,726
Electricity, gas, steam and air conditioning supply	742,709	722,773	708,725	746,943	781,892	822,651	856,017	913,920	911,992	989,547	1,001,029	1,011,862	981,634	986,545
Water supply; sewerage, waste management and remediation activities	85,895	96,777	84,647	86,992	89,238	90,026	91,767	93,333	94,530	103,843	102,251	103,489	98,168	97,131
Service	14,624,735	15,012,767	16,045,949	16,744,085	16,455,164	16,845,469	17,277,331	17,308,122	17,652,153	18,065,460	18,595,429	19,012,844	18,522,838	18,718,510
Construction	463,508	485,615	509,183	519,576	556,580	581,903	577,569	627,174	711,532	737,620	777,632	817,209	735,022	729,570
Wholesale and retail trade; repair of motor vehicles and motorcycles	2,451,881	2,399,917	2,564,145	2,641,642	2,421,806	2,417,665	2,385,340	2,509,252	2,580,065	2,637,229	2,705,919	2,775,485	2,674,846	2,710,405
Transportation and storage	2,687,723	2,813,351	2,951,512	3,008,079	3,037,264	3,243,653	3,305,948	3,361,244	3,294,097	3,670,645	3,774,035	3,791,411	3,705,811	3,680,406
Accommodation and food service activities	792,917	797,910	824,455	768,803	813,427	899,582	921,377	984,167	1,037,854	1,025,156	1,059,340	1,109,834	893,406	832,232
Information and communication	288,675	286,588	291,198	224,760	367,126	374,512	411,833	438,779	478,682	525,144	536,958	544,344	543,638	540,338
Financial and insurance activities	331,295	342,718	355,840	368,710	315,651	329,876	333,335	328,734	336,730	358,874	366,147	373,954	382,423	388,748
Real estate activities	5,820,085	6,168,266	6,742,069	7,317,458	6,893,588	6,913,439	7,376,265	6,874,007	6,910,586	6,658,936	6,862,688	6,984,472	6,981,835	7,210,205
Professional, scientific and technical activities	10,714	10,552	11,449	12,591	12,838	13,214	13,529	13,683	14,207	14,589	14,873	15,457	15,684	15,666
Administrative and support service activities	5,269	6,360	5,794	4,181	5,810	5,836	6,829	8,205	8,982	9,450	9,787	10,221	9,508	9,542
Public administration and defence; compulsory social security	-	-	-	-	-	-	-	-	-	-	-	-	-	-
Education	414,147	399,636	421,862	439,969	463,030	477,596	472,455	486,810	535,678	593,442	611,959	633,744	638,545	631,755
Human health and social work activities	745,999	708,636	768,015	841,333	863,747	866,567	825,706	926,453	949,806	995,071	1,013,283	1,027,264	1,028,997	1,048,637
Arts, entertainment and recreation	8,867	9,535	9,464	7,776	11,230	12,721	11,993	11,039	9,145	10,207	10,657	11,429	11,347	11,514
Other service activities	566,965	540,607	558,413	587,364	635,026	656,805	607,446	627,498	651,394	708,796	732,752	792,854	768,561	767,653
Activities of households as employers	-	-	-	-	-	-	-	-	-	-	-	-	-	-
TOTAL	22,352,299	22,742,481	24,085,957	25,048,377	25,517,586	26,251,005	26,711,065	27,038,358	27,695,479	28,838,169	29,817,212	30,499,753	29,724,176	30,388,595

TABLE 4-1 GROWTH RATE OF GROSS CAPITAL STOCK OF PRIVATE SECTOR : CHAIN VOLUME MEASURES (reference year = 2002)

(Unit - Percentage)

Sector	2008	2009	2010	2011	2012	2013	2014	2015	2016	2017	2018r	2019r	2020r	2021p
Agriculture	-0.5	5.3	4.1	3.3	8.6	1.5	2.2	4.8	10.7	16.7	4.5	2.7	-10.1	-0.3
Agriculture, forestry and fishing	-0.5	5.3	4.1	3.3	8.6	1.5	2.2	4.8	10.7	16.7	4.5	2.7	-10.1	-0.3
None Agriculture	4.8	1.6	6.0	4.0	1.5	2.9	1.7	1.0	2.0	3.4	3.3	2.3	-2.0	2.4
Industrial	3.5	-1.0	4.0	3.3	8.9	4.2	-0.2	2.9	1.9	5.7	4.2	2.3	-0.9	5.2
Mining and quarrying	2.9	5.3	2.8	5.4	12.5	4.8	4.1	-0.0	-2.8	4.9	2.8	1.9	1.9	1.1
Manufacturing	1.9	-1.4	5.3	2.9	9.3	4.1	-1.1	2.6	2.6	5.2	4.9	2.5	-0.7	6.4
Electricity, gas, steam and air conditioning supply	16.9	-2.7	-1.9	5.4	4.7	5.2	4.1	6.8	-0.2	8.5	1.2	1.1	-3.0	0.5
Water supply; sewerage, waste management and remediation activities	1.0	12.7	-12.5	2.8	2.6	0.9	1.9	1.7	1.3	9.9	-1.5	1.2	-5.1	-1.1
Service	5.4	2.7	6.9	4.4	-1.7	2.4	2.6	0.2	2.0	2.3	2.9	2.2	-2.6	1.1
Construction	-9.1	4.8	4.9	2.0	7.1	4.5	-0.7	8.6	13.5	3.7	5.4	5.1	-10.1	-0.7
Wholesale and retail trade; repair of motor vehicles and motorcycles	5.4	-2.1	6.8	3.0	-8.3	-0.2	-1.3	5.2	2.8	2.2	2.6	2.6	-3.6	1.3
Transportation and storage	9.6	4.7	4.9	1.9	1.0	6.8	1.9	1.7	-2.0	11.4	2.8	0.5	-2.3	-0.7
Accommodation and food service activities	2.2	0.6	3.3	-6.8	5.8	10.6	2.4	6.8	5.5	-1.2	3.3	4.8	-19.5	-6.8
Information and communication	6.5	-0.7	1.6	-22.8	63.3	2.0	10.0	6.5	9.1	9.7	2.2	1.4	-0.1	-0.6
Financial and insurance activities	5.2	3.4	3.8	3.6	-14.4	4.5	1.0	-1.4	2.4	6.6	2.0	2.1	2.3	1.7
Real estate activities	6.3	6.0	9.3	8.5	-5.8	0.3	6.7	-6.8	0.5	-3.6	3.1	1.8	-0.0	3.3
Professional, scientific and technical activities	-4.3	-1.5	8.5	10.0	2.0	2.9	2.4	1.1	3.8	2.7	1.9	3.9	1.5	-0.1
Administrative and support service activities	-13.8	20.7	-8.9	-27.8	39.0	0.4	17.0	20.1	9.5	5.2	3.6	4.4	-7.0	0.4
Public administration and defence; compulsory social security	-	-	-	-	-	-	-	-	-	-	-	-	-	-
Education	1.9	-3.5	5.6	4.3	5.2	3.1	-1.1	3.0	10.0	10.8	3.1	3.6	0.8	-1.1
Human health and social work activities	2.7	-5.0	8.4	9.5	2.7	0.3	-4.7	12.2	2.5	4.8	1.8	1.4	0.2	1.9
Arts, entertainment and recreation	29.3	7.5	-0.7	-17.8	44.4	13.3	-5.7	-8.0	-17.2	11.6	4.4	7.2	-0.7	1.5
Other service activities	0.3	-4.6	3.3	5.2	8.1	3.4	-7.5	3.3	3.8	8.8	3.4	8.2	-3.1	-0.1
Activities of households as employers	-	-	-	-	-	-	-	-	-	-	-	-	-	-
TOTAL	4.6	1.7	5.9	4.0	1.9	2.9	1.8	1.2	2.4	4.1	3.4	2.3	-2.5	2.2

TABLE 5 GROSS CAPITAL STOCK OF PUBLIC SECTOR AT CURRENT REPLACEMENT COST

(Unit - Millions of Baht)

Sector	2008	2009	2010	2011	2012	2013	2014	2015	2016	2017	2018r	2019r	2020r	2021p
Agriculture	1,653,292	1,654,508	1,897,841	1,934,053	2,089,102	2,276,818	2,403,317	2,500,218	2,416,623	2,098,911	2,266,192	2,331,448	2,459,205	2,540,590
Agriculture, forestry and fishing	1,653,292	1,654,508	1,897,841	1,934,053	2,089,102	2,276,818	2,403,317	2,500,218	2,416,623	2,098,911	2,266,192	2,331,448	2,459,205	2,540,590
None Agriculture	10,425,483	10,406,311	11,528,424	12,757,155	13,537,484	14,299,457	14,816,500	15,486,763	15,860,433	15,854,253	16,244,605	16,205,273	16,546,579	17,106,603
Industrial	2,752,930	2,722,320	3,131,501	3,350,888	3,563,627	3,766,410	3,879,343	3,956,511	4,079,465	4,075,789	4,074,500	4,044,783	4,211,451	4,320,757
Mining and quarrying	85,387	84,227	93,661	103,704	112,875	117,896	121,965	125,084	124,695	125,589	136,762	151,804	156,324	165,438
Manufacturing	353,959	377,279	419,781	426,549	448,803	470,277	507,205	535,305	530,262	519,612	424,911	323,454	353,209	386,107
Electricity, gas, steam and air conditioning supply	2,092,656	2,001,087	2,377,978	2,562,065	2,729,994	2,903,426	2,968,573	3,007,325	3,128,503	3,122,315	3,187,988	3,240,101	3,359,772	3,418,317
Water supply; sewerage, waste management and remediation activities	220,928	259,728	240,082	258,569	271,955	274,812	281,600	288,798	296,005	308,273	324,838	329,424	342,147	350,895
Service	7,672,553	7,683,991	8,396,923	9,406,267	9,973,856	10,533,047	10,937,157	11,530,252	11,780,968	11,778,464	12,170,105	12,160,491	12,335,128	12,785,846
Construction	600,406	584,919	664,813	709,671	730,588	752,521	805,750	868,348	855,039	846,459	850,088	820,304	975,076	1,059,419
Wholesale and retail trade; repair of motor vehicles and motorcycles	27,060	26,376	28,371	30,515	32,177	34,293	35,965	37,591	37,188	37,599	39,125	30,387	28,974	30,224
Transportation and storage	3,911,831	3,945,687	4,321,628	4,723,170	5,118,277	5,397,847	5,571,989	5,958,588	6,083,042	6,519,556	6,519,556	6,396,254	6,282,368	6,300,547
Accommodation and food service activities	468,228	481,427	511,108	627,392	668,155	674,364	694,273	715,683	704,321	680,367	707,280	736,973	654,122	630,877
Information and communication	278,690	305,492	295,167	412,896	329,188	398,762	452,789	500,678	458,951	479,303	497,726	503,043	525,176	552,389
Financial and insurance activities	90,789	90,968	101,653	108,279	115,315	123,918	127,786	133,292	128,718	131,402	137,630	140,395	149,752	159,170
Real estate activities	697,957	664,425	733,949	832,186	892,570	940,424	955,950	953,082	925,018	789,822	768,436	797,321	894,433	1,042,395
Professional, scientific and technical activities	7,299	7,392	7,874	8,125	8,375	8,833	9,267	10,012	10,681	10,502	11,601	11,936	12,022	12,239
Administrative and support service activities	22,797	22,597	24,830	27,400	29,302	30,931	31,942	33,333	33,377	35,292	37,274	38,106	38,719	39,257
Public administration and defence; compulsory social security	618,859	621,862	668,188	723,962	766,890	833,388	859,264	904,021	916,886	1,012,383	1,067,275	1,110,127	1,126,128	1,177,855
Education	246,893	246,276	271,184	322,799	342,246	357,014	363,012	371,688	354,180	333,166	346,952	358,590	377,383	394,218
Human health and social work activities	487,191	473,981	534,118	621,089	668,089	692,169	711,226	726,430	877,763	843,207	853,394	867,289	923,642	1,019,746
Arts, entertainment and recreation	11,855	12,672	14,028	15,758	12,859	14,718	15,361	18,434	21,927	19,637	20,575	21,010	20,816	21,153
Other service activities	202,697	199,917	220,014	243,025	259,825	273,866	302,583	299,071	373,876	293,750	313,193	328,756	326,516	346,356
Activities of households as employers	-	-	-	-	-	-	-	-	-	-	-	-	-	-
TOTAL	12,078,775	12,060,819	13,426,264	14,691,208	15,626,586	16,576,275	17,219,817	17,986,982	18,277,056	17,953,163	18,510,797	18,536,721	19,005,784	19,647,193

TABLE 5-1 GROWTH RATE OF GROSS CAPITAL STOCK OF PUBLIC SECTOR AT CURRENT REPLACEMENT COST

(Unit - Percentage)

Sector	2008	2009	2010	2011	2012	2013	2014	2015	2016	2017	2018r	2019r	2020r	2021p
Agriculture	21.1	0.1	14.7	1.9	8.0	9.0	5.6	4.0	-3.3	-13.1	8.0	2.9	5.5	3.3
Agriculture, forestry and fishing	21.1	0.1	14.7	1.9	8.0	9.0	5.6	4.0	-3.3	-13.1	8.0	2.9	5.5	3.3
None Agriculture	13.4	-0.2	10.8	10.7	6.1	5.6	3.6	4.5	2.4	-0.0	2.5	-0.2	2.1	3.4
Industrial	11.8	-1.1	15.0	7.0	6.3	5.7	3.0	2.0	3.1	-0.1	-0.0	-0.7	4.1	2.6
Mining and quarrying	19.5	-1.4	11.2	10.7	8.8	4.4	3.5	2.6	-0.3	0.7	8.9	11.0	3.0	5.8
Manufacturing	13.7	6.6	11.3	1.6	5.2	4.8	7.9	5.5	-0.9	-2.0	-18.2	-23.9	9.2	9.3
Electricity, gas, steam and air conditioning supply	11.5	-4.4	18.8	7.7	6.6	6.4	2.2	1.3	4.0	-0.2	2.1	1.6	3.7	1.7
Water supply; sewerage, waste management and remediation activities	8.9	17.6	-7.6	7.7	5.2	1.1	2.5	2.6	2.5	4.1	5.4	1.4	3.9	2.6
Service	13.9	0.1	9.3	12.0	6.0	5.6	3.8	5.4	2.2	-0.0	3.3	-0.1	1.4	3.7
Construction	13.7	-2.6	13.7	6.7	2.9	3.0	7.1	7.8	-1.5	-1.0	0.4	-3.5	18.9	8.6
Wholesale and retail trade; repair of motor vehicles and motorcycles	14.5	-2.5	7.6	7.6	5.4	6.6	4.9	4.5	-1.1	1.1	4.1	-22.3	-4.6	4.3
Transportation and storage	14.9	0.9	9.5	9.3	8.4	5.5	3.2	6.9	2.1	3.0	4.1	-1.9	-1.8	0.3
Accommodation and food service activities	13.4	2.8	6.2	22.8	6.5	0.9	3.0	3.1	-1.6	-3.4	4.0	4.2	-11.2	-3.6
Information and communication	-7.3	9.6	-3.4	39.9	-20.3	21.1	13.5	10.6	-8.3	4.4	3.8	1.1	4.4	5.2
Financial and insurance activities	14.0	0.2	11.7	6.5	6.5	7.5	3.1	4.3	-3.4	2.1	4.7	2.0	6.7	6.3
Real estate activities	17.3	-4.8	10.5	13.4	7.3	5.4	1.7	-0.3	-2.9	-14.6	-2.7	3.8	12.2	16.5
Professional, scientific and technical activities	0.2	1.3	6.5	3.2	3.1	5.5	4.9	8.0	6.7	-1.7	10.5	2.9	0.7	1.8
Administrative and support service activities	15.3	-0.9	9.9	10.4	6.9	5.6	3.3	4.4	0.1	5.7	5.6	2.2	1.6	1.4
Public administration and defence; compulsory social security	15.1	0.5	7.4	8.3	5.9	8.7	3.1	5.2	1.4	10.4	5.4	4.0	1.4	4.6
Education	15.5	-0.2	10.1	19.0	6.0	4.3	1.7	2.4	-4.7	-5.9	4.1	3.4	5.2	4.5
Human health and social work activities	14.9	-2.7	12.7	16.3	7.6	3.6	2.8	2.1	20.8	-3.9	1.2	1.6	6.5	10.4
Arts, entertainment and recreation	-10.1	6.9	10.7	12.3	-18.4	14.5	4.4	20.0	18.9	-10.4	4.8	2.1	-0.9	1.6
Other service activities	16.4	-1.4	10.1	10.5	6.9	5.4	10.5	-1.2	25.0	-21.4	6.6	5.0	-0.7	6.1
Activities of households as employers	-	-	-	-	-	-	-	-	-	-	-	-	-	-
TOTAL	14.4	-0.1	11.3	9.4	6.4	6.1	3.9	4.5	1.6	-1.8	3.1	0.1	2.5	3.4

TABLE 6 GROSS CAPITAL STOCK OF PUBLIC SECTOR : CHAIN VOLUME MEASURES (reference year = 2002)

(Unit - Millions of Baht)

Sector	2008	2009	2010	2011	2012	2013	2014	2015	2016	2017	2018r	2019r	2020r	2021p
Agriculture	1,438,516	1,441,624	1,488,022	1,565,212	1,720,721	1,782,261	1,796,214	1,882,408	1,893,653	1,711,494	1,788,343	1,834,279	1,939,459	1,988,749
Agriculture, forestry and fishing	1,438,516	1,441,624	1,488,022	1,565,212	1,720,721	1,782,261	1,796,214	1,882,408	1,893,653	1,711,494	1,788,343	1,834,279	1,939,459	1,988,749
None Agriculture	8,197,867	8,147,686	8,957,358	9,548,872	9,913,729	10,340,491	10,527,958	10,848,375	11,284,704	11,139,959	11,277,176	11,169,779	11,386,698	11,677,650
Industrial	2,117,067	2,047,229	2,257,826	2,372,503	2,449,199	2,537,115	2,590,007	2,609,773	2,668,052	2,714,477	2,667,871	2,634,930	2,742,131	2,777,768
Mining and quarrying	81,377	83,221	85,398	92,589	106,016	112,279	115,605	114,510	110,583	109,815	112,926	124,098	127,437	134,574
Manufacturing	292,775	300,131	322,120	313,087	336,647	354,073	363,636	378,902	387,679	380,199	309,568	236,129	258,568	281,213
Electricity, gas, steam and air conditioning supply	1,567,998	1,470,868	1,678,700	1,789,027	1,827,090	1,891,085	1,928,218	1,931,247	1,980,399	2,022,926	2,031,865	2,052,917	2,126,808	2,133,338
Water supply; sewerage, waste management and remediation activities	173,851	195,876	171,325	176,072	180,619	182,213	185,737	188,906	191,329	200,961	206,956	209,462	217,803	220,813
Service	6,078,012	6,099,399	6,697,972	7,178,367	7,467,690	7,808,238	7,942,208	8,248,166	8,630,545	8,429,509	8,619,350	8,545,414	8,650,926	8,909,059
Construction	481,020	442,797	500,140	511,431	527,801	546,166	559,221	623,671	658,141	629,633	633,293	613,603	729,309	785,347
Wholesale and retail trade; repair of motor vehicles and motorcycles	22,617	21,551	22,974	23,749	21,625	21,810	21,761	22,968	23,117	22,234	22,813	17,766	16,959	17,459
Transportation and storage	3,150,583	3,175,432	3,524,509	3,713,583	4,009,914	4,201,209	4,279,805	4,481,133	4,571,273	4,606,078	4,735,816	4,569,104	4,456,766	4,462,083
Accommodation and food service activities	371,205	369,071	388,053	439,137	459,346	475,172	484,858	512,418	527,611	505,022	498,607	522,373	479,799	460,055
Information and communication	224,745	233,282	218,880	299,010	241,364	261,624	283,479	305,230	284,316	299,387	306,122	309,917	323,408	335,554
Financial and insurance activities	72,708	75,174	79,502	81,529	70,075	75,019	75,404	74,497	71,561	70,067	71,487	72,798	77,773	81,521
Real estate activities	539,067	582,232	654,851	699,040	670,065	677,992	722,314	673,794	638,834	531,287	539,551	557,260	622,823	716,583
Professional, scientific and technical activities	5,579	5,494	5,961	6,556	6,685	6,881	7,045	7,125	7,398	7,265	7,745	8,049	8,167	8,194
Administrative and support service activities	19,152	18,498	20,723	23,289	24,269	24,842	24,031	23,908	23,833	25,168	26,065	27,220	28,075	28,189
Public administration and defence; compulsory social security	466,980	488,640	532,563	567,801	611,124	648,835	647,814	635,001	658,544	693,063	711,697	738,658	748,658	771,968
Education	193,196	185,063	200,592	224,275	233,370	245,223	236,883	242,372	240,958	225,142	232,167	240,432	254,149	262,447
Human health and social work activities	349,448	327,503	364,500	388,147	406,059	421,683	395,283	427,397	591,837	557,520	567,724	574,707	602,415	657,295
Arts, entertainment and recreation	10,138	10,472	11,732	12,044	8,288	9,783	9,569	11,780	14,820	12,808	13,373	14,342	14,296	14,447
Other service activities	166,856	159,488	170,537	179,739	171,816	186,332	193,520	195,578	272,973	206,782	213,771	231,305	238,528	251,805
Activities of households as employers	-	-	-	-	-	-	-	-	-	-	-	-	-	-
TOTAL	9,627,906	9,579,886	10,443,582	11,112,335	11,626,378	12,115,545	12,318,051	12,723,124	13,174,290	12,860,088	13,067,482	12,999,364	13,313,814	13,653,771

TABLE 6-1 GROWTH RATE OF GROSS CAPITAL STOCK OF PUBLIC SECTOR : CHAIN VOLUME MEASURES (reference year = 2002)

(Unit - Percentage)

Sector	2008	2009	2010	2011	2012	2013	2014	2015	2016	2017	2018r	2019r	2020r	2021p
Agriculture	14.4	0.2	3.2	5.2	9.9	3.6	0.8	4.8	0.6	-9.6	4.5	2.6	5.7	2.5
Agriculture, forestry and fishing	14.4	0.2	3.2	5.2	9.9	3.6	0.8	4.8	0.6	-9.6	4.5	2.6	5.7	2.5
None Agriculture	9.2	-0.6	9.9	6.6	3.8	4.3	1.8	3.0	4.0	-1.3	1.2	-1.0	1.9	2.6
Industrial	5.7	-3.3	10.3	5.1	3.2	3.6	2.1	0.8	2.2	1.7	-1.7	-1.2	4.1	1.3
Mining and quarrying	16.7	2.3	2.6	8.4	14.5	5.9	3.0	-0.9	-3.4	-0.7	2.8	9.9	2.7	5.6
Manufacturing	8.3	2.5	7.3	-2.8	7.5	5.2	2.7	4.2	2.3	-1.9	-18.6	-23.7	9.5	8.8
Electricity, gas, steam and air conditioning supply	5.3	-6.2	14.1	6.6	2.1	3.5	2.0	0.2	2.5	2.1	0.4	1.0	3.6	0.3
Water supply; sewerage, waste management and remediation activities	1.0	12.7	-12.5	2.8	2.6	0.9	1.9	1.7	1.3	5.0	3.0	1.2	4.0	1.4
Service	10.5	0.4	9.8	7.2	4.0	4.6	1.7	3.9	4.6	-2.3	2.3	-0.9	1.2	3.0
Construction	5.2	-7.9	13.0	2.3	3.2	3.5	2.4	11.5	5.5	-4.3	0.6	-3.1	18.9	7.7
Wholesale and retail trade; repair of motor vehicles and motorcycles	11.3	-4.7	6.6	3.4	-8.9	0.9	-0.2	5.5	0.6	-3.8	2.6	-22.1	-4.5	2.9
Transportation and storage	12.9	0.8	11.0	5.4	8.0	4.8	1.9	4.7	2.0	0.8	2.8	-3.5	-2.5	0.1
Accommodation and food service activities	8.4	-0.6	5.1	13.2	4.6	3.4	2.0	5.7	3.0	-4.3	-1.3	4.8	-8.2	-4.1
Information and communication	-10.1	3.8	-6.2	36.6	-19.3	8.4	8.4	7.7	-6.9	5.3	2.2	1.2	4.4	3.8
Financial and insurance activities	12.2	3.4	5.8	2.5	-14.0	7.1	0.5	-1.2	-3.9	-2.1	2.0	1.8	6.8	4.8
Real estate activities	12.5	8.0	12.5	6.7	-4.1	1.2	6.5	-6.7	-5.2	-16.8	1.6	3.3	11.8	15.1
Professional, scientific and technical activities	-4.3	-1.5	8.5	10.0	2.0	2.9	2.4	1.1	3.8	-1.8	6.6	3.9	1.5	0.3
Administrative and support service activities	13.3	-3.4	12.0	12.4	4.2	2.4	-3.3	-0.5	-0.3	5.6	3.6	4.4	3.1	0.4
Public administration and defence; compulsory social security	13.8	4.6	9.0	6.6	7.6	6.2	-0.2	-2.0	3.7	5.2	2.7	3.8	1.4	3.1
Education	7.9	-4.2	8.4	11.8	4.1	5.1	-3.4	2.3	-0.6	-6.6	3.1	3.6	5.7	3.3
Human health and social work activities	8.9	-6.3	11.3	6.5	4.6	3.8	-6.3	8.1	38.5	-5.8	1.8	1.2	4.8	9.1
Arts, entertainment and recreation	-11.0	3.3	12.0	2.7	-31.2	18.0	-2.2	23.1	25.8	-13.6	4.4	7.2	-0.3	1.1
Other service activities	11.3	-4.4	6.9	5.4	-4.4	8.4	3.9	1.1	39.6	-24.2	3.4	8.2	3.1	5.6
Activities of households as employers	-	-	-	-	-	-	-	-	-	-	-	-	-	-
TOTAL	9.9	-0.5	9.0	6.4	4.6	4.2	1.7	3.3	3.5	-2.4	1.6	-0.5	2.4	2.6

TABLE 7 NET CAPITAL STOCK OF THAILAND AT CURRENT REPLACEMENT COST

(Unit - Millions of Baht)

Sector	2008	2009	2010	2011	2012	2013	2014	2015	2016	2017	2018r	2019r	2020r	2021p
Agriculture	1,929,537	1,937,787	2,218,249	2,258,642	2,451,272	2,644,884	2,762,499	2,849,773	2,833,022	2,768,015	2,974,634	3,033,159	2,946,959	2,999,820
Agriculture, forestry and fishing	1,929,537	1,937,787	2,218,249	2,258,642	2,451,272	2,644,884	2,762,499	2,849,773	2,833,022	2,768,015	2,974,634	3,033,159	2,946,959	2,999,820
None Agriculture	24,271,755	23,847,242	25,619,515	28,126,333	30,101,129	31,311,397	32,094,162	32,980,284	33,269,347	34,313,147	35,291,242	35,782,528	35,514,088	35,992,908
Industrial	6,763,539	6,756,060	7,390,155	7,912,345	8,484,368	8,773,223	9,015,991	9,314,184	9,465,753	9,874,878	10,335,662	10,422,126	10,411,053	10,657,703
Mining and quarrying	345,599	347,008	384,507	418,811	464,088	483,357	506,418	524,036	541,333	582,859	651,304	656,097	659,242	667,367
Manufacturing	4,314,689	4,407,283	4,777,641	5,122,102	5,480,278	5,616,248	5,792,050	5,964,506	6,032,752	6,342,875	6,660,171	6,698,406	6,669,267	6,883,958
Electricity, gas, steam and air conditioning supply	1,917,125	1,786,134	2,033,549	2,165,151	2,324,779	2,459,289	2,499,804	2,604,394	2,659,760	2,699,346	2,761,150	2,800,694	2,811,653	2,834,321
Water supply; sewerage, waste management and remediation activities	186,127	215,635	194,458	206,281	215,223	214,329	217,719	221,249	231,908	249,797	263,037	266,928	270,892	272,056
Service	17,508,216	17,091,182	18,229,360	20,213,988	21,616,761	22,538,174	23,078,172	23,666,100	23,803,595	24,438,269	24,955,580	25,360,402	25,103,035	25,335,206
Construction	798,295	825,815	895,220	950,116	993,997	1,018,513	1,058,736	1,116,306	1,171,843	1,196,062	1,270,358	1,305,252	1,321,760	1,352,317
Wholesale and retail trade; repair of motor vehicles and motorcycles	1,782,264	1,757,374	1,879,058	2,038,833	2,191,495	2,312,288	2,368,457	2,432,955	2,429,222	2,585,968	2,678,410	2,710,966	2,626,146	2,666,374
Transportation and storage	4,968,112	5,015,038	5,287,182	5,677,982	5,994,924	6,302,833	6,437,102	6,709,383	6,624,069	7,108,062	7,305,826	7,273,125	7,126,355	7,066,854
Accommodation and food service activities	842,276	875,534	902,344	1,005,402	1,097,607	1,150,393	1,188,327	1,235,867	1,264,687	1,235,332	1,336,309	1,403,687	1,267,003	1,248,708
Information and communication	364,500	405,115	377,615	401,637	470,102	568,237	653,865	708,234	691,888	729,760	745,115	752,848	782,562	795,904
Financial and insurance activities	315,189	310,958	339,001	375,722	397,152	415,736	425,852	439,883	441,526	481,029	502,445	511,972	530,260	541,820
Real estate activities	5,982,654	5,492,795	5,904,575	6,703,114	7,126,936	7,359,953	7,487,026	7,459,345	7,572,007	7,346,167	7,228,129	7,347,506	7,356,162	7,489,071
Professional, scientific and technical activities	13,778	13,849	14,884	15,401	15,907	16,564	17,228	18,425	19,322	19,164	20,300	20,772	20,286	20,382
Administrative and support service activities	17,490	18,290	19,008	19,047	22,031	23,207	25,073	27,720	28,108	29,979	32,343	32,676	29,988	30,203
Public administration and defence; compulsory social security	363,101	362,229	409,007	467,446	494,574	529,596	532,271	552,832	537,165	584,212	601,584	615,151	629,956	646,070
Education	476,347	477,457	522,406	599,197	651,850	669,170	686,447	705,199	725,201	765,562	802,294	863,168	873,156	880,796
Human health and social work activities	962,860	925,286	1,025,039	1,238,764	1,314,123	1,319,266	1,358,639	1,416,074	1,428,475	1,469,723	1,497,157	1,541,726	1,607,303	1,658,119
Arts, entertainment and recreation	13,541	14,671	14,997	14,971	19,542	21,429	21,651	22,425	22,237	21,802	24,676	24,981	23,478	23,631
Other service activities	607,810	596,772	639,023	706,409	826,521	830,991	817,498	821,452	847,845	865,448	910,632	956,573	908,620	914,957
Activities of households as employers	-	-	-	-	-	-	-	-	-	-	-	-	-	-
TOTAL	26,201,292	25,785,029	27,837,764	30,384,975	32,552,401	33,956,282	34,856,662	35,830,057	36,102,369	37,081,163	38,265,876	38,815,687	38,461,047	38,992,728

TABLE 7-1 GROWTH RATE OF NET CAPITAL STOCK OF THAILAND AT CURRENT REPLACEMENT COST

(Unit - Percentage)

Sector	2008	2009	2010	2011	2012	2013	2014	2015	2016	2017	2018r	2019r	2020r	2021p
Agriculture	13.9	0.4	14.5	1.8	8.5	7.9	4.4	3.2	-0.6	-2.3	7.5	2.0	-2.8	1.8
Agriculture, forestry and fishing	13.9	0.4	14.5	1.8	8.5	7.9	4.4	3.2	-0.6	-2.3	7.5	2.0	-2.8	1.8
None Agriculture	10.5	-1.7	7.4	9.8	7.0	4.0	2.5	2.8	0.9	3.1	2.9	1.4	-0.8	1.3
Industrial	10.1	-0.1	9.4	7.1	7.2	3.4	2.8	3.3	1.6	4.3	4.7	0.8	-0.1	2.4
Mining and quarrying	8.3	0.4	10.8	8.9	10.8	4.2	4.8	3.5	3.3	7.7	11.7	0.7	0.5	1.2
Manufacturing	7.8	2.1	8.4	7.2	7.0	2.5	3.1	3.0	1.1	5.1	5.0	0.6	-0.4	3.2
Electricity, gas, steam and air conditioning supply	16.1	-6.8	13.9	6.5	7.4	5.8	1.6	4.2	2.1	1.5	2.3	1.4	0.4	0.8
Water supply; sewerage, waste management and remediation activities	8.4	15.9	-9.8	6.1	4.3	-0.4	1.6	1.6	4.8	7.7	5.3	1.5	1.5	0.4
Service	10.6	-2.4	6.7	10.9	6.9	4.3	2.4	2.5	0.6	2.7	2.1	1.6	-1.0	0.9
Construction	5.3	3.4	8.4	6.1	4.6	2.5	3.9	5.4	5.0	2.1	6.2	2.7	1.3	2.3
Wholesale and retail trade; repair of motor vehicles and motorcycles	8.4	-1.4	6.9	8.5	7.5	5.5	2.4	2.7	-0.2	6.5	3.6	1.2	-3.1	1.5
Transportation and storage	13.5	0.9	5.4	7.4	5.6	5.1	2.1	4.2	-1.3	7.3	2.8	-0.4	-2.0	-0.8
Accommodation and food service activities	10.0	3.9	3.1	11.4	9.2	4.8	3.3	4.0	2.3	-2.3	8.2	5.0	-9.7	-1.4
Information and communication	2.1	11.1	-6.8	6.4	17.0	20.9	15.1	8.3	-2.3	5.5	2.1	1.0	3.9	1.7
Financial and insurance activities	8.9	-1.3	9.0	10.8	5.7	4.7	2.4	3.3	0.4	8.9	4.5	1.9	3.6	2.2
Real estate activities	10.2	-8.2	7.5	13.5	6.3	3.3	1.7	-0.4	1.5	-3.0	-1.6	1.7	0.1	1.8
Professional, scientific and technical activities	11.4	0.5	7.5	3.5	3.3	4.1	4.0	7.0	4.9	-0.8	5.9	2.3	-2.3	0.5
Administrative and support service activities	9.5	4.6	3.9	0.2	15.7	5.3	8.0	10.6	1.4	6.7	7.9	1.0	-8.2	0.7
Public administration and defence; compulsory social security	17.7	-0.2	12.9	14.3	5.8	7.1	0.5	3.9	-2.8	8.8	3.0	2.3	2.4	2.6
Education	11.3	0.2	9.4	14.7	8.8	2.7	2.6	2.7	2.8	5.6	4.8	7.6	1.2	0.9
Human health and social work activities	10.9	-3.9	10.8	20.9	6.1	0.4	3.0	4.2	0.9	2.9	1.9	3.0	4.3	3.2
Arts, entertainment and recreation	5.7	8.3	2.2	-0.5	31.0	9.7	1.0	3.6	-0.8	-2.0	13.2	1.2	-6.0	0.6
Other service activities	7.2	-1.8	7.1	10.5	17.0	0.5	-1.6	0.5	3.2	2.1	5.2	5.0	-5.0	0.7
Activities of households as employers	-	-	-	-	-	-	-	-	-	-	-	-	-	-
TOTAL	10.7	-1.6	8.0	9.2	7.1	4.3	2.7	2.8	0.8	2.7	3.2	1.4	-0.9	1.4

TABLE 8 NET CAPITAL STOCK OF THAILAND : CHAIN VOLUME MEASURES (reference year = 2002)

(Unit - Millions of Baht)

Sector	2008	2009	2010	2011	2012	2013	2014	2015	2016	2017	2018r	2019r	2020r	2021p
Agriculture	1,678,874	1,768,975	1,797,236	1,886,110	1,991,979	2,042,642	2,055,790	2,060,838	2,142,999	2,192,830	2,261,670	2,284,210	2,256,002	2,289,761
Agriculture, forestry and fishing	1,678,874	1,768,975	1,797,236	1,886,110	1,991,979	2,042,642	2,055,790	2,060,838	2,142,999	2,192,830	2,261,670	2,284,210	2,256,002	2,289,761
None Agriculture	19,347,290	19,730,124	20,342,416	20,458,081	21,426,818	21,914,494	22,226,220	22,643,724	23,299,735	23,755,779	24,493,526	24,824,779	24,600,367	24,740,965
Industrial	5,472,484	5,548,367	5,759,005	5,937,658	6,263,462	6,448,263	6,415,724	6,458,989	6,670,825	6,881,973	7,162,671	7,165,704	7,149,376	7,272,018
Mining and quarrying	329,368	342,862	362,536	348,952	403,448	426,069	444,284	448,659	445,383	461,334	472,690	474,490	474,491	479,427
Manufacturing	3,547,948	3,485,499	3,573,466	3,650,780	3,866,084	3,976,809	3,905,399	3,970,544	4,148,922	4,277,856	4,499,998	4,497,817	4,472,138	4,597,378
Electricity, gas, steam and air conditioning supply	1,436,474	1,537,655	1,629,749	1,740,278	1,790,951	1,843,800	1,869,038	1,837,263	1,860,742	1,917,633	1,953,973	1,956,920	1,966,659	1,957,543
Water supply; sewerage, waste management and remediation activities	146,464	162,622	176,474	178,634	181,779	180,723	182,620	184,042	190,752	200,154	206,480	207,232	207,663	206,127
Service	13,867,413	14,173,535	14,574,557	14,507,731	15,152,009	15,456,760	15,792,574	16,163,514	16,607,447	16,852,728	17,309,825	17,637,845	17,429,393	17,446,320
Construction	639,560	625,160	673,475	684,709	694,234	714,655	710,387	775,121	856,972	868,814	890,837	911,061	922,121	935,309
Wholesale and retail trade; repair of motor vehicles and motorcycles	1,489,649	1,435,873	1,468,662	1,531,594	1,571,833	1,569,395	1,529,372	1,586,417	1,612,072	1,633,350	1,689,669	1,720,619	1,636,135	1,640,678
Transportation and storage	4,001,310	4,060,193	4,151,272	4,297,929	4,395,680	4,591,141	4,627,382	4,722,352	4,659,761	4,894,251	4,919,230	4,882,270	4,699,964	4,656,873
Accommodation and food service activities	667,744	671,199	715,757	735,216	745,004	779,937	798,503	851,397	912,339	897,015	907,371	949,390	854,858	837,574
Information and communication	293,945	309,357	318,201	328,634	356,722	385,308	423,085	446,231	474,485	519,212	524,303	528,317	529,155	530,915
Financial and insurance activities	252,421	256,974	270,848	289,003	300,389	313,262	312,770	306,001	319,436	333,408	339,144	347,480	361,995	364,663
Real estate activities	4,620,683	4,906,910	4,990,276	4,449,776	4,759,290	4,726,663	5,103,429	5,071,539	5,165,084	5,052,763	5,343,613	5,474,294	5,598,682	5,632,591
Professional, scientific and technical activities	10,530	10,294	11,270	12,428	12,698	12,904	13,096	13,113	13,431	13,856	13,621	13,999	13,621	13,502
Administrative and support service activities	14,697	14,976	15,868	17,028	19,192	19,604	19,840	20,911	21,117	22,424	23,734	25,691	26,003	25,918
Public administration and defence; compulsory social security	273,989	284,628	288,604	312,071	342,838	358,668	349,074	337,793	336,566	348,979	345,105	358,499	377,236	381,589
Education	372,745	358,782	366,219	376,235	394,897	408,358	397,969	408,550	437,261	462,680	476,255	514,353	513,236	511,970
Human health and social work activities	690,631	675,200	694,977	764,109	800,680	805,702	763,067	841,941	913,864	922,809	931,067	950,029	964,283	983,337
Arts, entertainment and recreation	11,578	12,122	12,775	14,168	16,601	18,774	17,778	18,887	19,777	18,869	20,400	20,692	20,071	20,093
Other service activities	500,336	517,248	553,702	605,697	633,643	655,473	606,146	622,783	714,666	710,173	727,624	785,109	774,328	775,564
Activities of households as employers	-	-	-	-	-	-	-	-	-	-	-	-	-	-
TOTAL	21,019,935	21,488,312	22,130,851	22,333,863	23,405,997	23,943,431	24,269,494	24,693,972	25,430,782	25,935,881	26,741,986	27,096,251	26,844,298	27,016,743

TABLE 8-1 GROWTH RATE OF NET CAPITAL STOCK OF THAILAND : CHAIN VOLUME MEASURES (reference year = 2002)

(Unit - Percentage)

Sector	2008	2009	2010	2011	2012	2013	2014	2015	2016	2017	2018r	2019r	2020r	2021p
Agriculture	7.6	5.4	1.6	4.9	5.6	2.5	0.6	0.2	4.0	2.3	3.1	1.0	-1.2	1.5
Agriculture, forestry and fishing	7.6	5.4	1.6	4.9	5.6	2.5	0.6	0.2	4.0	2.3	3.1	1.0	-1.2	1.5
None Agriculture	6.2	2.0	3.1	0.6	4.7	2.3	1.4	1.9	2.9	2.0	3.1	1.4	-0.9	0.6
Industrial	4.6	1.4	3.8	3.1	5.5	3.0	-0.5	0.7	3.3	3.2	4.1	0.0	-0.2	1.7
Mining and quarrying	5.8	4.1	5.7	-3.7	15.6	5.6	4.3	1.0	-0.7	3.6	2.5	0.4	0.0	1.0
Manufacturing	2.7	-1.8	2.5	2.2	5.9	2.9	-1.8	1.7	4.5	3.1	5.2	-0.0	-0.6	2.8
Electricity, gas, steam and air conditioning supply	9.6	7.0	6.0	6.8	2.9	3.0	1.4	-1.7	1.3	3.1	1.9	0.2	0.5	-0.5
Water supply; sewerage, waste management and remediation activities	0.5	11.0	8.5	1.2	1.8	-0.6	1.0	0.8	3.6	4.9	3.2	0.4	0.2	-0.7
Service	6.8	2.2	2.8	-0.5	4.4	2.0	2.2	2.3	2.7	1.5	2.7	1.9	-1.2	0.1
Construction	-2.6	-2.3	7.7	1.7	1.4	2.9	-0.6	9.1	10.6	1.4	2.5	2.3	1.2	1.4
Wholesale and retail trade; repair of motor vehicles and motorcycles	5.4	-3.6	2.3	4.3	2.6	-0.2	-2.6	3.7	1.6	1.3	3.4	1.8	-4.9	0.3
Transportation and storage	11.5	1.5	2.2	3.5	2.3	4.4	0.8	2.1	-1.3	5.0	0.5	-0.8	-3.7	-0.9
Accommodation and food service activities	5.1	0.5	6.6	2.7	1.3	4.7	2.4	6.6	7.2	-1.7	1.2	4.6	-10.0	-2.0
Information and communication	-1.0	5.2	2.9	3.3	8.5	8.0	9.8	5.5	6.3	9.4	1.0	0.8	0.2	0.3
Financial and insurance activities	7.2	1.8	5.4	6.7	3.9	4.3	-0.2	-2.2	4.4	4.4	1.7	2.5	4.2	0.7
Real estate activities	5.8	6.2	1.7	-10.8	7.0	-0.7	8.0	-0.6	1.8	-2.2	5.8	2.4	2.3	0.6
Professional, scientific and technical activities	6.4	-2.2	9.5	10.3	2.2	1.6	1.5	0.1	2.4	0.0	3.2	1.0	-2.7	-0.9
Administrative and support service activities	7.6	1.9	6.0	7.3	12.7	2.1	1.2	5.4	1.0	6.2	5.8	8.2	1.2	-0.3
Public administration and defence; compulsory social security	16.3	3.9	1.4	8.1	9.9	4.6	-2.7	-3.2	-0.4	3.7	-1.1	3.9	5.2	1.2
Education	4.0	-3.7	2.1	2.7	5.0	3.4	-2.5	2.7	7.0	5.8	2.9	8.0	-0.2	-0.2
Human health and social work activities	5.0	-2.2	2.9	9.9	4.8	0.6	-5.3	10.3	8.5	1.0	0.9	2.0	1.5	2.0
Arts, entertainment and recreation	4.6	4.7	5.4	10.9	17.2	13.1	-5.3	6.2	4.7	-4.6	8.1	1.4	-3.0	0.1
Other service activities	2.5	3.4	7.0	9.4	4.6	3.4	-7.5	2.7	14.8	-0.6	2.5	7.9	-1.4	0.2
Activities of households as employers	-	-	-	-	-	-	-	-	-	-	-	-	-	-
TOTAL	6.3	2.2	3.0	0.9	4.8	2.3	1.4	1.7	3.0	2.0	3.1	1.3	-0.9	0.6

TABLE 9 NET CAPITAL STOCK OF PRIVATE SECTOR AT CURRENT REPLACEMENT COST

(Unit - Millions of Baht)

Sector	2008	2009	2010	2011	2012	2013	2014	2015	2016	2017	2018r	2019r	2020r	2021p
Agriculture	864,317	891,983	1,025,763	1,034,187	1,114,936	1,189,881	1,252,324	1,292,173	1,351,975	1,497,275	1,609,337	1,642,152	1,476,426	1,481,911
Agriculture, forestry and fishing	864,317	891,983	1,025,763	1,034,187	1,114,936	1,189,881	1,252,324	1,292,173	1,351,975	1,497,275	1,609,337	1,642,152	1,476,426	1,481,911
None Agriculture	17,482,732	17,186,076	18,276,231	19,994,172	21,428,914	22,239,565	22,790,907	23,310,991	23,437,218	24,540,895	25,322,247	25,851,114	25,351,370	25,595,079
Industrial	5,055,992	5,119,692	5,505,135	5,910,804	6,353,423	6,543,483	6,743,254	6,986,143	7,072,020	7,483,113	7,941,903	8,057,703	7,970,541	8,183,181
Mining and quarrying	290,113	292,660	324,386	351,776	388,693	404,120	424,160	439,582	454,590	493,705	551,681	549,180	551,153	553,915
Manufacturing	4,088,124	4,167,218	4,512,768	4,853,090	5,196,838	5,322,968	5,478,527	5,636,816	5,702,097	6,017,613	6,391,899	6,495,578	6,447,313	6,649,904
Electricity, gas, steam and air conditioning supply	616,204	588,506	603,675	637,724	696,720	745,519	768,570	836,581	838,643	886,692	911,340	924,674	887,911	896,249
Water supply; sewerage, waste management and remediation activities	61,550	71,308	64,305	68,215	71,172	70,876	71,997	73,165	76,690	85,103	86,984	88,270	84,163	83,113
Service	12,426,740	12,066,384	12,771,096	14,083,367	15,075,491	15,696,081	16,047,653	16,324,847	16,365,198	17,057,782	17,380,343	17,793,412	17,380,829	17,411,898
Construction	391,748	431,951	451,621	478,811	510,189	525,390	537,912	559,716	608,761	645,263	700,158	745,495	663,457	651,262
Wholesale and retail trade; repair of motor vehicles and motorcycles	1,765,974	1,741,734	1,862,372	2,020,667	2,172,100	2,291,616	2,347,046	2,410,888	2,407,650	2,564,349	2,656,019	2,693,725	2,609,601	2,649,309
Transportation and storage	2,287,120	2,355,915	2,409,686	2,541,010	2,583,752	2,746,081	2,805,354	2,875,642	2,774,226	3,152,354	3,240,061	3,298,289	3,235,365	3,194,218
Accommodation and food service activities	573,700	598,637	613,558	639,898	701,480	752,771	778,604	812,718	838,449	827,623	908,637	954,451	824,312	804,168
Information and communication	204,944	223,328	215,577	172,351	283,631	334,538	387,284	417,681	434,070	464,784	474,564	479,722	490,667	490,993
Financial and insurance activities	258,464	255,020	277,093	307,687	325,002	338,708	347,291	358,615	364,140	402,453	420,371	428,546	440,646	447,896
Real estate activities	5,475,504	5,019,041	5,381,843	6,118,603	6,495,561	6,702,636	6,819,258	6,793,449	6,931,264	6,803,358	6,701,271	6,804,599	6,753,692	6,812,059
Professional, scientific and technical activities	9,060	9,107	9,787	10,127	10,460	10,892	11,328	12,116	12,706	12,794	13,349	13,659	13,339	13,382
Administrative and support service activities	3,774	4,680	4,154	2,899	4,256	4,415	5,549	7,083	7,694	8,184	8,829	8,920	7,587	7,638
Public administration and defence; compulsory social security	-	-	-	-	-	-	-	-	-	-	-	-	-	-
Education	324,821	326,337	354,055	396,884	433,408	442,147	457,208	470,798	500,200	555,002	581,631	625,762	624,568	622,282
Human health and social work activities	655,708	632,822	695,130	847,686	893,893	887,431	918,793	969,034	880,084	941,960	959,543	988,632	1,013,790	1,019,246
Arts, entertainment and recreation	6,318	6,993	6,697	5,853	11,245	12,115	12,044	10,850	8,487	9,671	10,946	11,081	10,391	10,482
Other service activities	469,606	460,821	489,524	540,891	650,513	647,342	619,982	626,259	597,468	669,987	704,966	740,531	693,413	688,963
Activities of households as employers	-	-	-	-	-	-	-	-	-	-	-	-	-	-
TOTAL	18,347,049	18,078,059	19,301,994	21,028,359	22,543,850	23,429,445	24,043,230	24,603,163	24,789,192	26,038,170	26,931,583	27,493,267	26,827,797	27,076,990

TABLE 9-1 GROWTH RATE OF NET CAPITAL STOCK OF PRIVATE SECTOR AT CURRENT REPLACEMENT COST

(Unit - Percentage)

Sector	2008	2009	2010	2011	2012	2013	2014	2015	2016	2017	2018r	2019r	2020r	2021p
Agriculture	5.7	3.2	15.0	0.8	7.8	6.7	5.2	3.2	4.6	10.7	7.5	2.0	-10.1	0.4
Agriculture, forestry and fishing	5.7	3.2	15.0	0.8	7.8	6.7	5.2	3.2	4.6	10.7	7.5	2.0	-10.1	0.4
None Agriculture	9.2	-1.7	6.3	9.4	7.2	3.8	2.5	2.3	0.5	4.7	3.2	2.1	-1.9	1.0
Industrial	9.3	1.3	7.5	7.4	7.5	3.0	3.1	3.6	1.2	5.8	6.1	1.5	-1.1	2.7
Mining and quarrying	6.3	0.9	10.8	8.4	10.5	4.0	5.0	3.6	3.4	8.6	11.7	-0.5	0.4	0.5
Manufacturing	7.5	1.9	8.3	7.5	7.1	2.4	2.9	2.9	1.2	5.5	6.2	1.6	-0.7	3.1
Electricity, gas, steam and air conditioning supply	24.7	-4.5	2.6	5.6	9.3	7.0	3.1	8.8	0.2	5.7	2.8	1.5	-4.0	0.9
Water supply; sewerage, waste management and remediation activities	8.4	15.9	-9.8	6.1	4.3	-0.4	1.6	1.6	4.8	11.0	2.2	1.5	-4.7	-1.2
Service	9.1	-2.9	5.8	10.3	7.0	4.1	2.2	1.7	0.2	4.2	1.9	2.4	-2.3	0.2
Construction	-2.0	10.3	4.6	6.0	6.6	3.0	2.4	4.1	8.8	6.0	8.5	6.5	-11.0	-1.8
Wholesale and retail trade; repair of motor vehicles and motorcycles	8.3	-1.4	6.9	8.5	7.5	5.5	2.4	2.7	-0.1	6.5	3.6	1.4	-3.1	1.5
Transportation and storage	11.8	3.0	2.3	5.4	1.7	6.3	2.2	2.5	-3.5	13.6	2.8	1.8	-1.9	-1.3
Accommodation and food service activities	8.0	4.3	2.5	4.3	9.6	7.3	3.4	4.4	3.2	-1.3	9.8	5.0	-13.6	-2.4
Information and communication	10.4	9.0	-3.5	-20.1	64.6	17.9	15.8	7.8	3.9	7.1	2.1	1.1	2.3	0.1
Financial and insurance activities	7.7	-1.3	8.7	11.0	5.6	4.2	2.5	3.3	1.5	10.5	4.5	1.9	2.8	1.6
Real estate activities	9.7	-8.3	7.2	13.7	6.2	3.2	1.7	-0.4	2.0	-1.8	-1.5	1.5	-0.7	0.9
Professional, scientific and technical activities	11.4	0.5	7.5	3.5	3.3	4.1	4.0	7.0	4.9	0.7	4.3	2.3	-2.3	0.3
Administrative and support service activities	-11.1	24.0	-11.2	-30.2	46.8	3.7	25.7	27.6	8.6	6.4	7.9	1.0	-14.9	0.7
Public administration and defence; compulsory social security	-	-	-	-	-	-	-	-	-	-	-	-	-	-
Education	9.3	0.5	8.5	12.1	9.2	2.0	3.4	3.0	6.2	11.0	4.8	7.6	-0.2	-0.4
Human health and social work activities	8.9	-3.5	9.8	21.9	5.5	-0.7	3.5	5.5	-9.2	7.0	1.9	3.0	2.5	0.5
Arts, entertainment and recreation	31.3	10.7	-4.2	-12.6	92.1	7.7	-0.6	-9.9	-21.8	13.9	13.2	1.2	-6.2	0.9
Other service activities	4.8	-1.9	6.2	10.5	20.3	-0.5	-4.2	1.0	-4.6	12.1	5.2	5.0	-6.4	-0.6
Activities of households as employers	-	-	-	-	-	-	-	-	-	-	-	-	-	-
TOTAL	9.0	-1.5	6.8	8.9	7.2	3.9	2.6	2.3	0.8	5.0	3.4	2.1	-2.4	0.9

TABLE 10 NET CAPITAL STOCK OF PRIVATE SECTOR : CHAIN VOLUME MEASURES (reference year = 2002)

(Unit - Millions of Baht)

Sector	2008	2009	2010	2011	2012	2013	2014	2015	2016	2017	2018r	2019r	2020r	2021p
Agriculture	752,035	814,277	831,078	863,612	906,032	918,944	931,951	934,445	1,022,681	1,186,145	1,223,608	1,236,671	1,130,257	1,131,142
Agriculture, forestry and fishing	752,035	814,277	831,078	863,612	906,032	918,944	931,951	934,445	1,022,681	1,186,145	1,223,608	1,236,671	1,130,257	1,131,142
None Agriculture	13,997,158	14,296,112	14,559,783	14,365,600	15,111,826	15,398,849	15,648,566	15,934,153	16,366,528	16,934,812	17,645,585	18,022,871	17,677,156	17,706,295
Industrial	4,156,187	4,156,006	4,234,935	4,338,832	4,614,524	4,756,515	4,708,251	4,786,987	4,957,660	5,159,199	5,448,268	5,490,119	5,422,864	5,540,131
Mining and quarrying	276,487	289,162	305,849	293,098	337,903	356,222	372,117	376,352	374,013	390,766	400,385	397,165	396,691	397,922
Manufacturing	3,361,647	3,295,646	3,375,355	3,459,043	3,666,132	3,769,142	3,694,001	3,752,404	3,921,521	4,058,489	4,318,740	4,361,625	4,323,307	4,441,069
Electricity, gas, steam and air conditioning supply	461,712	506,635	483,803	512,580	536,734	558,936	574,639	590,163	586,706	629,911	644,924	646,094	621,064	619,000
Water supply; sewerage, waste management and remediation activities	48,435	53,778	58,359	59,073	60,113	59,764	60,391	60,861	63,080	68,191	68,281	68,530	64,519	62,972
Service	9,838,342	10,134,140	10,318,693	10,012,627	10,484,010	10,631,100	10,920,342	11,126,646	11,388,007	11,754,244	12,175,088	12,511,624	12,232,352	12,140,459
Construction	313,851	326,996	339,755	345,059	356,329	368,647	360,926	388,645	445,188	468,716	490,984	520,352	462,858	450,435
Wholesale and retail trade; repair of motor vehicles and motorcycles	1,476,035	1,423,095	1,455,622	1,517,950	1,557,925	1,555,368	1,515,549	1,572,031	1,597,760	1,619,698	1,675,546	1,709,679	1,625,831	1,630,181
Transportation and storage	1,842,043	1,907,357	1,891,984	1,923,409	1,894,494	2,000,314	2,016,659	2,024,000	1,951,554	2,170,551	2,181,629	2,214,060	2,133,783	2,104,906
Accommodation and food service activities	454,821	458,826	486,687	467,937	476,134	510,362	523,190	559,890	604,856	600,967	616,979	645,550	556,173	539,400
Information and communication	165,274	170,540	181,658	141,024	215,225	226,843	250,594	263,166	297,679	330,688	333,931	336,652	331,783	327,524
Financial and insurance activities	206,992	210,746	221,385	236,670	245,817	255,221	255,071	249,468	263,449	278,947	283,746	290,859	300,819	301,450
Real estate activities	4,228,988	4,483,690	4,548,488	4,061,757	4,337,666	4,304,526	4,648,256	4,618,804	4,728,016	4,679,416	4,954,119	5,069,800	5,140,151	5,123,406
Professional, scientific and technical activities	6,924	6,769	7,410	8,171	8,348	8,484	8,610	8,621	8,830	9,109	9,109	9,203	8,955	8,863
Administrative and support service activities	3,171	3,832	3,468	2,592	3,708	3,730	4,391	5,343	5,780	6,121	6,479	7,013	6,578	6,554
Public administration and defence; compulsory social security	-	-	-	-	-	-	-	-	-	-	-	-	-	-
Education	254,176	245,225	248,202	249,203	262,563	269,818	265,067	272,752	301,596	335,424	345,265	372,885	367,117	361,706
Human health and social work activities	470,322	461,785	471,301	522,882	544,641	541,974	516,034	576,151	563,034	591,440	596,732	609,208	608,214	604,459
Arts, entertainment and recreation	5,401	5,777	5,704	5,559	9,552	10,613	9,889	9,138	7,548	8,369	9,048	9,177	8,882	8,912
Other service activities	386,571	399,415	424,164	463,777	498,709	510,614	459,696	474,798	503,619	549,782	563,292	607,794	590,930	584,001
Activities of households as employers	-	-	-	-	-	-	-	-	-	-	-	-	-	-
TOTAL	14,750,584	15,108,301	15,388,583	15,226,268	16,015,086	16,315,508	16,578,382	16,867,490	17,384,804	18,107,073	18,856,231	19,247,339	18,801,265	18,831,361

TABLE 10-1 GROWTH RATE OF NET CAPITAL STOCK OF PRIVATE SECTOR : CHAIN VOLUME MEASURES (reference year = 2002)

(Unit - Percentage)

Sector	2008	2009	2010	2011	2012	2013	2014	2015	2016	2017	2018r	2019r	2020r	2021p
Agriculture	-0.1	8.3	2.1	3.9	4.9	1.4	1.4	0.3	9.4	16.0	3.2	1.1	-8.6	0.1
Agriculture, forestry and fishing	-0.1	8.3	2.1	3.9	4.9	1.4	1.4	0.3	9.4	16.0	3.2	1.1	-8.6	0.1
None Agriculture	4.8	2.1	1.8	-1.3	5.2	1.9	1.6	1.8	2.7	3.5	4.2	2.1	-1.9	0.2
Industrial	4.1	-0.0	1.9	2.5	6.4	3.1	-1.0	1.7	3.6	4.1	5.6	0.8	-1.2	2.2
Mining and quarrying	3.7	4.6	5.8	-4.2	15.3	5.4	4.5	1.1	-0.6	4.5	2.5	-0.8	-0.1	0.3
Manufacturing	2.4	-2.0	2.4	2.5	6.0	2.8	-2.0	1.6	4.5	3.5	6.4	1.0	-0.9	2.7
Electricity, gas, steam and air conditioning supply	17.8	9.7	-4.5	5.9	4.7	4.1	2.8	2.7	-0.6	7.4	2.4	0.2	-3.9	-0.3
Water supply; sewerage, waste management and remediation activities	0.5	11.0	8.5	1.2	1.8	-0.6	1.0	0.8	3.6	8.1	0.1	0.4	-5.9	-2.4
Service	5.1	3.0	1.8	-3.0	4.7	1.4	2.7	1.9	2.3	3.2	3.6	2.8	-2.2	-0.8
Construction	-9.3	4.2	3.9	1.6	3.3	3.5	-2.1	7.7	14.5	5.3	4.8	6.0	-11.0	-2.7
Wholesale and retail trade; repair of motor vehicles and motorcycles	5.4	-3.6	2.3	4.3	2.6	-0.2	-2.6	3.7	1.6	1.4	3.4	2.0	-4.9	0.3
Transportation and storage	9.7	3.5	-0.8	1.7	-1.5	5.6	0.8	0.4	-3.6	11.2	0.5	1.5	-3.6	-1.4
Accommodation and food service activities	3.2	0.9	6.0	-3.9	1.8	7.2	2.5	7.0	8.0	-0.6	2.7	4.6	-13.8	-3.0
Information and communication	7.0	3.2	6.5	-22.4	52.6	5.4	10.5	5.0	13.1	11.1	1.0	0.8	-1.4	-1.3
Financial and insurance activities	6.0	1.8	5.0	6.9	3.9	3.8	-0.1	-2.2	5.6	5.9	1.7	2.5	3.4	0.2
Real estate activities	5.3	6.0	1.4	-10.7	6.8	-0.8	8.0	-0.6	2.4	-1.0	5.9	2.3	1.4	-0.3
Professional, scientific and technical activities	6.5	-2.2	9.5	10.3	2.2	1.6	1.5	0.1	2.4	1.5	1.6	1.0	-2.7	-1.0
Administrative and support service activities	-12.6	20.8	-9.5	-25.3	43.1	0.6	17.7	21.7	8.2	5.9	5.8	8.2	-6.2	-0.4
Public administration and defence; compulsory social security	-	-	-	-	-	-	-	-	-	-	-	-	-	-
Education	2.2	-3.5	1.2	0.4	5.4	2.8	-1.8	2.9	10.6	11.2	2.9	8.0	-1.5	-1.5
Human health and social work activities	3.1	-1.8	2.1	10.9	4.2	-0.5	-4.8	11.6	-2.3	5.0	0.9	2.1	-0.2	-0.6
Arts, entertainment and recreation	29.9	7.0	-1.3	-2.5	71.8	11.1	-6.8	-7.6	-17.4	10.9	8.1	1.4	-3.2	0.3
Other service activities	0.2	3.3	6.2	9.3	7.5	2.4	-10.0	3.3	6.1	9.2	2.5	7.9	-2.8	-1.2
Activities of households as employers	-	-	-	-	-	-	-	-	-	-	-	-	-	-
TOTAL	4.6	2.4	1.9	-1.1	5.2	1.9	1.6	1.7	3.1	4.2	4.1	2.1	-2.3	0.2

TABLE 11 NET CAPITAL STOCK OF PUBLIC SECTOR AT CURRENT REPLACEMENT COST

(Unit - Millions of Baht)

Sector	2008	2009	2010	2011	2012	2013	2014	2015	2016	2017	2018r	2019r	2020r	2021p
Agriculture	1,065,220	1,045,804	1,192,487	1,224,455	1,336,335	1,455,004	1,510,175	1,557,600	1,481,047	1,270,741	1,365,298	1,391,007	1,470,532	1,517,909
Agriculture, forestry and fishing	1,065,220	1,045,804	1,192,487	1,224,455	1,336,335	1,455,004	1,510,175	1,557,600	1,481,047	1,270,741	1,365,298	1,391,007	1,470,532	1,517,909
None Agriculture	6,789,023	6,661,166	7,343,284	8,132,162	8,672,216	9,071,833	9,303,256	9,669,294	9,832,137	9,772,252	9,968,995	9,931,413	10,162,718	10,397,829
Industrial	1,707,547	1,636,368	1,885,021	2,001,541	2,130,945	2,229,740	2,272,737	2,328,041	2,393,733	2,391,765	2,393,759	2,364,423	2,440,512	2,474,522
Mining and quarrying	55,486	54,348	60,122	67,035	75,396	79,237	82,257	84,454	86,743	89,154	99,623	106,918	108,089	113,452
Manufacturing	226,564	240,065	264,872	269,013	283,440	293,280	313,524	327,690	330,655	325,263	268,272	202,828	221,953	234,055
Electricity, gas, steam and air conditioning supply	1,300,921	1,197,628	1,429,874	1,527,427	1,628,059	1,713,770	1,731,234	1,767,813	1,821,116	1,812,654	1,849,810	1,876,020	1,923,741	1,938,072
Water supply; sewerage, waste management and remediation activities	124,576	144,327	130,153	138,066	144,051	143,453	145,721	148,084	155,219	164,694	176,053	178,658	186,729	188,943
Service	5,081,476	5,024,798	5,458,263	6,130,621	6,541,270	6,842,093	7,030,519	7,341,253	7,438,397	7,380,487	7,575,236	7,566,990	7,722,205	7,923,307
Construction	406,548	393,864	443,600	471,305	483,808	493,123	520,824	556,590	563,082	550,798	570,200	559,757	658,303	701,054
Wholesale and retail trade; repair of motor vehicles and motorcycles	16,290	15,641	16,686	18,166	19,395	20,672	21,411	22,067	21,571	21,619	22,392	17,242	16,545	17,065
Transportation and storage	2,680,992	2,659,124	2,877,496	3,136,971	3,411,172	3,556,751	3,631,749	3,833,742	3,849,843	3,955,707	4,065,765	3,974,835	3,890,990	3,872,636
Accommodation and food service activities	268,577	276,896	288,786	365,504	396,126	397,622	409,723	423,148	426,237	407,709	427,672	449,236	442,691	444,540
Information and communication	159,556	181,787	162,038	229,287	186,471	233,699	266,581	290,553	257,818	264,976	270,551	273,126	291,896	304,911
Financial and insurance activities	56,724	55,938	61,908	68,036	72,151	77,028	78,561	81,268	77,386	78,576	82,074	83,426	89,614	93,925
Real estate activities	507,150	473,754	522,732	584,512	631,375	657,317	667,768	665,896	640,743	542,808	526,858	542,907	602,470	677,012
Professional, scientific and technical activities	4,718	4,742	5,097	5,274	5,447	5,672	5,899	6,309	6,617	6,371	6,951	7,113	6,946	7,000
Administrative and support service activities	13,716	13,610	14,854	16,148	17,775	18,792	19,525	20,637	20,414	21,795	23,514	23,756	22,401	22,565
Public administration and defence; compulsory social security	363,101	362,229	409,007	467,446	494,574	529,596	532,271	552,832	537,165	584,212	601,584	615,151	629,956	646,070
Education	151,526	151,120	168,350	202,313	218,441	227,023	229,239	234,401	225,001	210,560	220,663	237,406	248,587	258,513
Human health and social work activities	307,152	292,464	329,909	391,078	420,230	431,835	439,846	447,041	548,392	527,763	537,614	553,094	593,513	638,873
Arts, entertainment and recreation	7,222	7,678	8,300	9,063	8,297	9,314	9,607	11,574	13,749	12,131	13,730	13,900	13,087	13,149
Other service activities	138,204	135,951	149,499	165,519	176,008	183,649	197,516	195,193	250,377	195,461	205,666	216,042	215,207	225,994
Activities of households as employers	-	-	-	-	-	-	-	-	-	-	-	-	-	-
TOTAL	7,854,243	7,706,970	8,535,770	9,356,617	10,008,551	10,526,836	10,813,431	11,226,894	11,313,177	11,042,993	11,334,293	11,322,420	11,633,250	11,915,738

TABLE 11-1 GROWTH RATE OF NET CAPITAL STOCK OF PUBLIC SECTOR AT CURRENT REPLACEMENT COST

(Unit - Percentage)

Sector	2008	2009	2010	2011	2012	2013	2014	2015	2016	2017	2018r	2019r	2020r	2021p
Agriculture	21.5	-1.8	14.0	2.7	9.1	8.9	3.8	3.1	-4.9	-14.2	7.4	1.9	5.7	3.2
Agriculture, forestry and fishing	21.5	-1.8	14.0	2.7	9.1	8.9	3.8	3.1	-4.9	-14.2	7.4	1.9	5.7	3.2
None Agriculture	13.9	-1.9	10.2	10.7	6.6	4.6	2.6	3.9	1.7	-0.6	2.0	-0.4	2.3	2.3
Industrial	12.6	-4.2	15.2	6.2	6.5	4.6	1.9	2.4	2.8	-0.1	0.1	-1.2	3.2	1.4
Mining and quarrying	20.5	-2.1	10.6	11.5	12.5	5.1	3.8	2.7	2.7	2.8	11.7	7.3	1.1	5.0
Manufacturing	14.3	6.0	10.3	1.6	5.4	3.5	6.9	4.5	0.9	-1.6	-17.5	-24.4	9.4	5.5
Electricity, gas, steam and air conditioning supply	12.4	-7.9	19.4	6.8	6.6	5.3	1.0	2.1	3.0	-0.5	2.0	1.4	2.5	0.7
Water supply; sewerage, waste management and remediation activities	8.4	15.9	-9.8	6.1	4.3	-0.4	1.6	1.6	4.8	6.1	6.9	1.5	4.5	1.2
Service	14.4	-1.1	8.6	12.3	6.7	4.6	2.8	4.4	1.3	-0.8	2.6	-0.1	2.1	2.6
Construction	13.5	-3.1	12.6	6.2	2.7	1.9	5.6	6.9	1.2	-2.2	3.5	-1.8	17.6	6.5
Wholesale and retail trade; repair of motor vehicles and motorcycles	14.4	-4.0	6.7	8.9	6.8	6.6	3.6	3.1	-2.2	0.2	3.6	-23.0	-4.0	3.1
Transportation and storage	15.1	-0.8	8.2	9.0	8.7	4.3	2.1	5.6	0.4	2.7	2.8	-2.2	-2.1	-0.5
Accommodation and food service activities	14.5	3.1	4.3	26.6	8.4	0.4	3.0	3.3	0.7	-4.3	4.9	5.0	-1.5	0.4
Information and communication	-6.8	13.9	-10.9	41.5	-18.7	25.3	14.1	9.0	-11.3	2.8	2.1	1.0	6.9	4.5
Financial and insurance activities	14.9	-1.4	10.7	9.9	6.0	6.8	2.0	3.4	-4.8	1.5	4.5	1.6	7.4	4.8
Real estate activities	16.2	-6.6	10.3	11.8	8.0	4.1	1.6	-0.3	-3.8	-15.3	-2.9	3.0	11.0	12.4
Professional, scientific and technical activities	11.4	0.5	7.5	3.5	3.3	4.1	4.0	7.0	4.9	-3.7	9.1	2.3	-2.3	0.8
Administrative and support service activities	17.0	-0.8	9.1	8.7	10.1	5.7	3.9	5.7	-1.1	6.8	7.9	1.0	-5.7	0.7
Public administration and defence; compulsory social security	17.7	-0.2	12.9	14.3	5.8	7.1	0.5	3.9	-2.8	8.8	3.0	2.3	2.4	2.6
Education	15.8	-0.3	11.4	20.2	8.0	3.9	1.0	2.3	-4.0	-6.4	4.8	7.6	4.7	4.0
Human health and social work activities	15.4	-4.8	12.8	18.5	7.5	2.8	1.9	1.6	22.7	-3.8	1.9	2.9	7.3	7.6
Arts, entertainment and recreation	-9.7	6.3	8.1	9.2	-8.5	12.3	3.1	20.5	18.8	-11.8	13.2	1.2	-5.8	0.5
Other service activities	16.3	-1.6	10.0	10.7	6.3	4.3	7.6	-1.2	28.3	-21.9	5.2	5.0	-0.4	5.0
Activities of households as employers	-	-	-	-	-	-	-	-	-	-	-	-	-	-
TOTAL	14.9	-1.9	10.8	9.6	7.0	5.2	2.7	3.8	0.8	-2.4	2.6	-0.1	2.7	2.4

TABLE 12 NET CAPITAL STOCK OF PUBLIC SECTOR : CHAIN VOLUME MEASURES (reference year = 2002)

(Unit - Millions of Baht)

Sector	2008	2009	2010	2011	2012	2013	2014	2015	2016	2017	2018r	2019r	2020r	2021p
Agriculture	926,838	954,697	966,157	1,022,497	1,085,946	1,123,697	1,123,837	1,126,390	1,120,315	1,006,683	1,038,060	1,047,537	1,125,743	1,158,617
Agriculture, forestry and fishing	926,838	954,697	966,157	1,022,497	1,085,946	1,123,697	1,123,837	1,126,390	1,120,315	1,006,683	1,038,060	1,047,537	1,125,743	1,158,617
None Agriculture	5,344,265	5,428,398	5,773,186	6,079,342	6,298,560	6,500,541	6,561,265	6,693,101	6,916,630	6,802,234	6,827,016	6,783,091	6,900,844	7,010,293
Industrial	1,312,415	1,384,667	1,519,427	1,595,353	1,642,046	1,684,297	1,701,009	1,662,115	1,702,380	1,711,001	1,699,193	1,658,995	1,711,591	1,715,963
Mining and quarrying	52,882	53,701	56,688	55,855	65,546	69,847	72,167	72,308	71,370	70,567	72,304	77,324	77,799	81,504
Manufacturing	186,303	189,855	198,113	191,739	199,954	207,669	211,399	218,141	227,402	219,368	181,260	136,194	148,833	156,311
Electricity, gas, steam and air conditioning supply	974,760	1,031,018	1,145,944	1,227,695	1,254,214	1,284,862	1,294,398	1,247,099	1,274,035	1,287,721	1,309,048	1,310,825	1,345,594	1,338,543
Water supply; sewerage, waste management and remediation activities	98,030	108,845	118,117	119,563	121,668	120,961	122,231	123,183	127,674	131,966	138,202	138,706	143,148	143,159
Service	4,029,420	4,039,627	4,251,732	4,481,698	4,653,243	4,812,069	4,856,109	5,021,120	5,203,414	5,081,178	5,117,053	5,111,980	5,177,811	5,281,706
Construction	325,708	298,163	333,719	339,648	337,902	346,005	349,458	386,472	411,780	400,094	399,849	390,705	459,258	484,869
Wholesale and retail trade; repair of motor vehicles and motorcycles	13,615	12,779	13,041	13,646	13,910	14,030	13,825	14,388	14,314	13,654	14,125	10,943	10,308	10,501
Transportation and storage	2,159,267	2,152,836	2,259,288	2,374,520	2,501,186	2,590,827	2,610,723	2,698,352	2,708,207	2,723,700	2,737,601	2,668,210	2,566,181	2,551,967
Accommodation and food service activities	212,924	212,274	229,072	267,282	268,874	269,579	275,317	291,511	307,487	296,052	290,396	303,844	298,689	298,178
Information and communication	128,672	138,818	136,543	187,610	141,497	158,465	172,491	183,066	176,807	188,525	190,374	191,668	197,375	203,394
Financial and insurance activities	45,428	46,227	49,462	52,332	54,571	58,041	57,700	56,534	55,988	54,463	55,400	56,623	61,178	63,215
Real estate activities	391,695	423,221	441,789	388,020	421,625	422,138	455,175	452,736	437,069	373,348	389,495	404,495	458,531	509,185
Professional, scientific and technical activities	3,606	3,525	3,859	4,255	4,347	4,418	4,484	4,490	4,599	4,465	4,745	4,794	4,665	4,638
Administrative and support service activities	11,524	11,142	12,398	14,433	15,482	15,872	15,447	15,566	15,335	16,300	17,252	18,674	19,421	19,360
Public administration and defence; compulsory social security	273,989	284,628	288,604	312,071	342,838	358,668	349,074	337,793	336,566	348,979	345,105	358,499	377,236	381,589
Education	118,571	113,559	118,019	127,033	132,335	138,541	132,903	135,799	135,666	127,257	130,991	141,470	146,121	150,266
Human health and social work activities	220,313	213,419	223,680	241,231	256,043	263,732	247,037	265,794	350,835	331,374	334,339	340,825	356,073	378,882
Arts, entertainment and recreation	6,176	6,345	7,071	8,610	7,050	8,162	7,890	9,751	12,232	10,502	11,354	11,516	11,191	11,183
Other service activities	113,767	117,835	129,539	141,921	134,934	144,859	146,450	147,985	211,047	160,392	164,333	177,316	183,399	191,564
Activities of households as employers	-	-	-	-	-	-	-	-	-	-	-	-	-	-
TOTAL	6,266,254	6,377,067	6,737,535	7,099,803	7,379,970	7,619,285	7,680,754	7,815,968	8,034,934	7,812,749	7,865,958	7,830,096	8,021,142	8,161,887

TABLE 12-1 GROWTH RATE OF NET CAPITAL STOCK OF PUBLIC SECTOR : CHAIN VOLUME MEASURES (reference year = 2002)

(Unit - Percentage)

Sector	2008	2009	2010	2011	2012	2013	2014	2015	2016	2017	2018r	2019r	2020r	2021p
Agriculture	14.8	3.0	1.2	5.8	6.2	3.5	0.0	0.2	-0.5	-10.1	3.1	0.9	7.5	2.9
Agriculture, forestry and fishing	14.8	3.0	1.2	5.8	6.2	3.5	0.0	0.2	-0.5	-10.1	3.1	0.9	7.5	2.9
None Agriculture	9.8	1.6	6.4	5.3	3.6	3.2	0.9	2.0	3.3	-1.7	0.4	-0.6	1.7	1.6
Industrial	6.4	5.5	9.7	5.0	2.9	2.6	1.0	-2.3	2.4	0.5	-0.7	-2.4	3.2	0.3
Mining and quarrying	17.7	1.5	5.6	-1.5	17.4	6.6	3.3	0.2	-1.3	-1.1	2.5	6.9	0.6	4.8
Manufacturing	8.8	1.9	4.3	-3.2	4.3	3.9	1.8	3.2	4.2	-3.5	-17.4	-24.9	9.3	5.0
Electricity, gas, steam and air conditioning supply	6.1	5.8	11.1	7.1	2.2	2.4	0.7	-3.7	2.2	1.1	1.7	0.1	2.7	-0.5
Water supply; sewerage, waste management and remediation activities	0.5	11.0	8.5	1.2	1.8	-0.6	1.0	0.8	3.6	3.4	4.7	0.4	3.2	0.0
Service	10.9	0.3	5.3	5.4	3.8	3.4	0.9	3.4	3.6	-2.3	0.7	-0.1	1.3	2.0
Construction	5.0	-8.5	11.9	1.8	-0.5	2.4	1.0	10.6	6.5	-2.8	-0.1	-2.3	17.5	5.6
Wholesale and retail trade; repair of motor vehicles and motorcycles	11.3	-6.1	2.1	4.6	1.9	0.9	-1.5	4.1	-0.5	-4.6	3.4	-22.5	-5.8	1.9
Transportation and storage	13.0	-0.3	4.9	5.1	5.3	3.6	0.8	3.4	0.4	0.6	0.5	-2.5	-3.8	-0.6
Accommodation and food service activities	9.4	-0.3	7.9	16.7	0.6	0.3	2.1	5.9	5.5	-3.7	-1.9	4.6	-1.7	-0.2
Information and communication	-9.7	7.9	-1.6	37.4	-24.6	12.0	8.9	6.1	-3.4	6.6	1.0	0.7	3.0	3.0
Financial and insurance activities	13.1	1.8	7.0	5.8	4.3	6.4	-0.6	-2.0	-1.0	-2.7	1.7	2.2	8.0	3.3
Real estate activities	11.5	8.0	4.4	-12.2	8.7	0.1	7.8	-0.5	-3.5	-14.6	4.3	3.9	13.4	11.0
Professional, scientific and technical activities	6.5	-2.2	9.5	10.3	2.2	1.6	1.5	0.1	2.4	-2.9	6.3	1.0	-2.7	-0.6
Administrative and support service activities	15.0	-3.3	11.3	16.4	7.3	2.5	-2.7	0.8	-1.5	6.3	5.8	8.2	4.0	-0.3
Public administration and defence; compulsory social security	16.3	3.9	1.4	8.1	9.9	4.6	-2.7	-3.2	-0.4	3.7	-1.1	3.9	5.2	1.2
Education	8.2	-4.2	3.9	7.6	4.2	4.7	-4.1	2.2	-0.1	-6.2	2.9	8.0	3.3	2.8
Human health and social work activities	9.3	-3.1	4.8	7.8	6.1	3.0	-6.3	7.6	32.0	-5.5	0.9	1.9	4.5	6.4
Arts, entertainment and recreation	-10.6	2.7	11.4	21.8	-18.1	15.8	-3.3	23.6	25.4	-14.1	8.1	1.4	-2.8	-0.1
Other service activities	11.2	3.6	9.9	9.6	-4.9	7.4	1.1	1.0	42.6	-24.0	2.5	7.9	3.4	4.5
Activities of households as employers	-	-	-	-	-	-	-	-	-	-	-	-	-	-
TOTAL	10.4	1.8	5.7	5.4	3.9	3.2	0.8	1.8	2.8	-2.8	0.7	-0.5	2.4	1.8

TABLE 13 ANNUAL DEPRECIATION OF THAILAND AT CURRENT REPLACEMENT COST

(Unit - Millions of Baht)

Sector	2008	2009	2010	2011	2012	2013	2014	2015	2016	2017	2018r	2019r	2020r	2021p
Agriculture	132,112	148,020	172,855	184,727	190,956	223,286	227,351	247,261	250,197	242,872	244,372	246,630	249,141	252,331
Agriculture, forestry and fishing	132,112	148,020	172,855	184,727	190,956	223,286	227,351	247,261	250,197	242,872	244,372	246,630	249,141	252,331
None Agriculture	1,677,643	1,854,956	1,791,406	2,159,520	2,160,722	2,425,422	2,385,881	2,641,302	2,580,084	2,700,887	2,744,986	2,766,803	2,786,382	2,836,913
Industrial	608,983	674,803	609,510	787,432	742,660	853,414	818,726	909,897	896,633	938,613	952,123	954,792	961,615	979,915
Mining and quarrying	26,965	31,046	28,678	43,603	38,097	40,790	42,073	45,639	43,020	42,581	42,411	44,286	45,028	45,901
Manufacturing	346,387	383,169	321,746	448,689	407,311	493,454	459,929	528,607	510,300	534,644	540,500	545,060	549,375	561,660
Electricity, gas, steam and air conditioning supply	206,493	230,342	229,229	262,087	264,093	285,266	283,536	299,833	308,784	325,681	333,790	329,758	331,327	335,367
Water supply; sewerage, waste management and remediation activities	29,137	30,245	29,857	33,054	33,159	33,903	33,188	35,818	34,529	35,707	35,423	35,689	35,886	36,987
Service	1,068,661	1,180,153	1,181,896	1,372,088	1,418,062	1,572,008	1,567,156	1,731,405	1,683,451	1,762,274	1,792,862	1,810,011	1,824,767	1,856,998
Construction	50,673	53,880	53,624	62,357	66,082	68,337	71,080	83,768	77,267	85,934	86,063	86,930	89,277	91,955
Wholesale and retail trade; repair of motor vehicles and motorcycles	159,077	162,241	171,087	185,899	210,710	228,848	236,759	254,771	245,951	269,288	272,051	274,081	273,199	277,243
Transportation and storage	320,327	346,114	351,210	435,795	428,711	477,827	484,493	533,518	551,339	559,241	568,189	571,060	573,205	580,874
Accommodation and food service activities	100,441	104,756	105,481	112,758	110,294	114,689	114,982	133,163	119,155	125,573	126,254	128,287	129,301	130,184
Information and communication	46,330	47,471	47,535	60,013	59,027	69,661	73,171	91,279	97,079	101,619	101,973	102,868	103,731	105,957
Financial and insurance activities	32,033	33,850	33,982	36,336	40,449	45,823	45,470	48,817	50,096	52,381	53,750	54,066	55,295	56,782
Real estate activities	172,289	225,535	206,837	259,743	260,566	314,667	279,616	282,502	278,500	290,796	299,009	304,166	308,240	315,916
Professional, scientific and technical activities	1,448	1,602	1,375	1,641	1,411	1,589	1,829	2,022	1,981	2,059	2,090	2,240	2,317	2,350
Administrative and support service activities	2,715	2,804	2,946	3,048	3,292	3,443	3,397	3,755	3,962	4,120	4,479	4,505	4,435	4,486
Public administration and defence; compulsory social security	24,975	27,240	29,267	22,270	39,979	42,909	45,209	42,173	33,963	33,842	39,392	39,434	40,013	40,767
Education	45,063	47,671	53,231	56,731	49,385	51,385	53,310	60,660	59,153	63,769	65,623	66,497	67,549	68,218
Human health and social work activities	78,000	90,334	87,802	91,894	101,828	104,094	107,143	131,718	112,928	118,905	117,833	119,218	120,945	124,171
Arts, entertainment and recreation	1,629	1,803	1,964	2,110	1,411	1,589	1,568	2,022	1,981	2,354	2,389	2,370	2,359	2,389
Other service activities	33,661	34,852	35,553	41,493	44,917	47,147	49,129	61,238	50,096	52,392	53,768	54,288	54,901	55,707
Activities of households as employers	-	-	-	-	-	-	-	-	-	-	-	-	-	-
TOTAL	1,809,755	2,002,976	1,964,261	2,344,247	2,351,678	2,648,708	2,613,232	2,888,563	2,830,281	2,943,759	2,989,358	3,011,433	3,035,523	3,089,244

TABLE 13-1 GROWTH RATE OF ANNUAL DEPRECIATION OF THAILAND AT CURRENT REPLACEMENT COST

(Unit - Percentage)

Sector	2008	2009	2010	2011	2012	2013	2014	2015	2016	2017	2018r	2019r	2020r	2021p
Agriculture	6.1	12.0	16.8	6.9	3.4	16.9	1.8	8.8	1.2	-2.9	0.6	0.9	1.0	1.3
Agriculture, forestry and fishing	6.1	12.0	16.8	6.9	3.4	16.9	1.8	8.8	1.2	-2.9	0.6	0.9	1.0	1.3
None Agriculture	7.4	10.6	-3.4	20.5	0.1	12.3	-1.6	10.7	-2.3	4.7	1.6	0.7	0.8	1.8
Industrial	7.0	10.8	-9.7	29.2	-5.7	14.9	-4.1	11.1	-1.5	4.7	1.4	0.3	0.7	1.9
Mining and quarrying	-0.1	15.1	-7.6	52.0	-12.6	7.1	3.1	8.5	-5.7	-1.0	-0.4	4.4	1.7	1.9
Manufacturing	3.1	10.6	-16.0	39.5	-9.2	21.1	-6.8	14.9	-3.5	4.8	1.1	0.8	0.8	2.2
Electricity, gas, steam and air conditioning supply	14.1	11.5	-0.5	14.3	0.8	8.0	-0.6	5.7	3.0	5.5	2.5	-1.2	0.5	1.2
Water supply; sewerage, waste management and remediation activities	15.1	3.8	-1.3	10.7	0.3	2.2	-2.1	7.9	-3.6	3.4	-0.8	0.8	0.6	3.1
Service	7.6	10.4	0.1	16.1	3.4	10.9	-0.3	10.5	-2.8	4.7	1.7	1.0	0.8	1.8
Construction	8.4	6.3	-0.5	16.3	6.0	3.4	4.0	17.9	-7.8	11.2	0.1	1.0	2.7	3.0
Wholesale and retail trade; repair of motor vehicles and motorcycles	10.3	2.0	5.5	8.7	13.3	8.6	3.5	7.6	-3.5	9.5	1.0	0.7	-0.3	1.5
Transportation and storage	9.8	8.1	1.5	24.1	-1.6	11.5	1.4	10.1	3.3	1.4	1.6	0.5	0.4	1.3
Accommodation and food service activities	12.8	4.3	0.7	6.9	-2.2	4.0	0.3	15.8	-10.5	5.4	0.5	1.6	0.8	0.7
Information and communication	2.9	2.5	0.1	26.2	-1.6	18.0	5.0	24.7	6.4	4.7	0.3	0.9	0.8	2.1
Financial and insurance activities	9.8	5.7	0.4	6.9	11.3	13.3	-0.8	7.4	2.6	4.6	2.6	0.6	2.3	2.7
Real estate activities	1.1	30.9	-8.3	25.6	0.3	20.8	-11.1	1.0	-1.4	4.4	2.8	1.7	1.3	2.5
Professional, scientific and technical activities	-14.2	10.7	-14.2	19.3	-14.0	12.6	15.1	10.5	-2.0	3.9	1.5	7.2	3.4	1.4
Administrative and support service activities	7.3	3.3	5.1	3.4	8.0	4.6	-1.3	10.5	5.5	4.0	8.7	0.6	-1.5	1.1
Public administration and defence; compulsory social security	16.6	9.1	7.4	-23.9	79.5	7.3	5.4	-6.7	-19.5	-0.4	16.4	0.1	1.5	1.9
Education	10.8	5.8	11.7	6.6	-12.9	4.0	3.7	13.8	-2.5	7.8	2.9	1.3	1.6	1.0
Human health and social work activities	-0.4	15.8	-2.8	4.7	10.8	2.2	2.9	22.9	-14.3	5.3	-0.9	1.2	1.4	2.7
Arts, entertainment and recreation	7.3	10.7	9.0	7.4	-33.1	12.6	-1.3	29.0	-2.0	18.8	1.5	-0.8	-0.5	1.3
Other service activities	10.2	3.5	2.0	16.7	8.3	5.0	4.2	24.6	-18.2	4.6	2.6	1.0	1.1	1.5
Activities of households as employers	-	-	-	-	-	-	-	-	-	-	-	-	-	-
TOTAL	7.3	10.7	-1.9	19.3	0.3	12.6	-1.3	10.5	-2.0	4.0	1.5	0.7	0.8	1.8

TABLE 14 ANNUAL DEPRECIATION OF THAILAND : CHAIN VOLUME MEASURES (reference year = 2002)

(Unit - Millions of Baht)

Sector	2008	2009	2010	2011	2012	2013	2014	2015	2016	2017	2018r	2019r	2020r	2021p
Agriculture	92,835	95,806	101,463	104,401	112,713	116,557	120,198	122,420	125,557	130,361	134,657	139,960	144,113	145,252
Agriculture, forestry and fishing	92,835	95,806	101,463	104,401	112,713	116,557	120,198	122,420	125,557	130,361	134,657	139,960	144,113	145,252
None Agriculture	1,311,279	1,350,417	1,376,344	1,445,582	1,492,514	1,545,614	1,591,109	1,633,183	1,674,845	1,719,494	1,763,637	1,811,505	1,836,994	1,854,915
Industrial	503,019	530,779	537,538	577,295	588,142	591,236	611,025	615,636	623,298	664,994	687,901	707,605	720,292	728,337
Mining and quarrying	24,576	26,569	28,585	32,229	32,657	34,385	36,731	38,140	38,455	36,342	37,581	39,438	40,153	40,836
Manufacturing	309,464	325,817	329,998	331,304	333,713	339,567	351,451	343,507	350,912	383,295	396,606	407,364	413,315	420,450
Electricity, gas, steam and air conditioning supply	145,000	153,517	153,630	179,891	187,203	183,075	188,458	197,103	197,678	207,373	214,629	220,740	225,782	225,671
Water supply; sewerage, waste management and remediation activities	23,884	24,694	25,634	26,465	26,705	27,164	27,262	28,867	27,801	27,889	28,607	29,424	30,102	30,651
Service	808,885	821,348	840,154	872,169	907,331	954,018	980,009	1,015,598	1,048,479	1,053,959	1,076,091	1,104,439	1,117,731	1,127,802
Construction	45,298	44,106	45,324	46,220	48,155	50,750	52,916	55,648	59,955	61,972	63,627	66,210	68,980	70,449
Wholesale and retail trade; repair of motor vehicles and motorcycles	134,958	132,504	141,521	155,424	173,113	183,277	175,827	184,822	185,612	194,958	200,487	208,828	208,850	209,270
Transportation and storage	248,377	266,382	266,744	267,906	274,145	293,369	304,827	319,339	331,159	331,966	335,973	339,705	341,521	345,388
Accommodation and food service activities	80,473	83,023	83,989	89,383	90,705	95,810	100,317	104,954	103,432	105,789	108,428	112,291	112,883	112,962
Information and communication	34,905	35,232	33,637	36,786	39,716	42,528	42,626	44,942	47,267	51,275	52,767	54,295	54,659	55,070
Financial and insurance activities	25,820	27,604	29,364	30,898	31,276	32,276	32,845	33,211	33,839	34,819	35,215	37,128	38,247	38,709
Real estate activities	95,837	88,722	91,640	94,210	96,322	97,967	102,420	103,058	94,016	91,057	93,084	95,736	96,775	97,888
Professional, scientific and technical activities	1,073	1,076	1,131	1,137	1,195	1,336	1,458	1,419	1,355	1,375	1,430	1,482	1,602	1,601
Administrative and support service activities	2,111	2,206	2,268	2,346	2,494	2,586	2,693	2,777	3,032	3,189	3,391	3,640	3,697	3,702
Public administration and defence; compulsory social security	19,240	20,511	21,824	21,952	22,888	22,034	23,414	22,032	21,153	21,512	22,729	22,894	23,438	23,554
Education	36,960	35,958	37,222	38,875	39,499	41,848	43,519	44,543	47,903	50,876	51,564	52,657	53,663	53,572
Human health and social work activities	57,652	60,791	61,441	62,008	63,639	67,522	67,940	71,476	80,112	80,202	82,637	85,077	88,577	89,886
Arts, entertainment and recreation	1,654	1,745	1,861	2,062	2,189	2,369	2,553	2,732	2,878	2,970	3,114	3,272	3,356	3,382
Other service activities	23,413	23,093	23,562	25,664	28,139	29,880	32,472	33,925	50,896	34,812	35,026	36,025	36,917	37,268
Activities of households as employers	-	-	-	-	-	-	-	-	-	-	-	-	-	-
TOTAL	1,404,341	1,446,478	1,478,509	1,550,110	1,606,195	1,663,148	1,712,354	1,756,449	1,801,274	1,851,140	1,899,776	1,953,240	1,983,219	2,002,265

TABLE 14-1 GROWTH RATE OF ANNUAL DEPRECIATION OF THAILAND : CHAIN VOLUME MEASURES (reference year = 2002)

(Unit - Percentage)

Sector	2008	2009	2010	2011	2012	2013	2014	2015	2016	2017	2018r	2019r	2020r	2021p
Agriculture	2.6	3.2	5.9	2.9	8.0	3.4	3.1	1.8	2.6	3.8	3.3	3.9	3.0	0.8
Agriculture, forestry and fishing	2.6	3.2	5.9	2.9	8.0	3.4	3.1	1.8	2.6	3.8	3.3	3.9	3.0	0.8
None Agriculture	4.1	3.0	1.9	5.0	3.2	3.6	2.9	2.6	2.6	2.7	2.6	2.7	1.4	1.0
Industrial	2.2	5.5	1.3	7.4	1.9	0.5	3.3	0.8	1.2	6.7	3.4	2.9	1.8	1.1
Mining and quarrying	1.4	8.1	7.6	12.7	1.3	5.3	6.8	3.8	0.8	-5.5	3.4	4.9	1.8	1.7
Manufacturing	1.0	5.3	1.3	0.4	0.7	1.8	3.5	-2.3	2.2	9.2	3.5	2.7	1.5	1.7
Electricity, gas, steam and air conditioning supply	4.5	5.9	0.1	17.1	4.1	-2.2	2.9	4.6	0.3	4.9	3.5	2.8	2.3	-0.0
Water supply; sewerage, waste management and remediation activities	2.7	3.4	3.8	3.2	0.9	1.7	0.4	5.9	-3.7	0.3	2.6	2.9	2.3	1.8
Service	5.2	1.5	2.3	3.8	4.0	5.1	2.7	3.6	3.2	0.5	2.1	2.6	1.2	0.9
Construction	5.4	-2.6	2.8	2.0	4.2	5.4	4.3	5.2	7.7	3.4	2.7	4.1	4.2	2.1
Wholesale and retail trade; repair of motor vehicles and motorcycles	8.3	-1.8	6.8	9.8	11.4	5.9	-4.1	5.1	0.4	5.0	2.8	4.2	0.0	0.2
Transportation and storage	1.9	7.2	0.1	0.4	2.3	7.0	3.9	4.8	3.7	0.2	1.2	1.1	0.5	1.1
Accommodation and food service activities	3.9	3.2	1.2	6.4	1.5	5.6	4.7	4.6	-1.5	2.3	2.5	3.6	0.5	0.1
Information and communication	4.9	0.9	-4.5	9.4	8.0	7.1	0.2	5.4	5.2	8.5	2.9	2.9	0.7	0.8
Financial and insurance activities	4.9	6.9	6.4	5.2	1.2	3.2	1.8	1.1	1.9	2.9	1.1	5.4	3.0	1.2
Real estate activities	10.7	-7.4	3.3	2.8	2.2	1.7	4.5	0.6	-8.8	-3.1	2.2	2.8	1.1	1.2
Professional, scientific and technical activities	2.5	0.3	5.1	0.5	5.1	11.8	9.1	-2.7	-4.5	1.5	4.0	3.6	8.1	-0.1
Administrative and support service activities	6.2	4.5	2.8	3.4	6.3	3.7	4.1	3.1	9.2	5.2	6.3	7.3	1.6	0.1
Public administration and defence; compulsory social security	7.7	6.6	6.4	0.6	4.3	-3.7	6.3	-5.9	-4.0	1.7	5.7	0.7	2.4	0.5
Education	5.3	-2.7	3.5	4.4	1.6	5.9	4.0	2.4	7.5	6.2	1.4	2.1	1.9	-0.2
Human health and social work activities	1.1	5.4	1.1	0.9	2.6	6.1	0.6	5.2	12.1	0.1	3.0	3.0	4.1	1.5
Arts, entertainment and recreation	3.4	5.5	6.6	10.8	6.2	8.2	7.8	7.0	5.3	3.2	4.8	5.1	2.6	0.8
Other service activities	5.5	-1.4	2.0	8.9	9.6	6.2	8.7	4.5	50.0	-31.6	0.6	2.9	2.5	1.0
Activities of households as employers	-	-	-	-	-	-	-	-	-	-	-	-	-	-
TOTAL	4.0	3.0	2.2	4.8	3.6	3.5	3.0	2.6	2.6	2.8	2.6	2.8	1.5	1.0

TABLE 15 ANNUAL DEPRECIATION OF PRIVATE SECTOR AT CURRENT REPLACEMENT COST

(Unit - Millions of Baht)

Sector	2008	2009	2010	2011	2012	2013	2014	2015	2016	2017	2018r	2019r	2020r	2021p
Agriculture	92,492	104,413	122,416	134,112	137,679	156,256	158,259	172,069	174,612	169,500	170,792	189,264	192,262	194,295
Agriculture, forestry and fishing	92,492	104,413	122,416	134,112	137,679	156,256	158,259	172,069	174,612	169,500	170,792	189,264	192,262	194,295
None Agriculture	1,301,706	1,446,145	1,372,107	1,698,510	1,582,268	1,846,765	1,766,895	2,011,738	2,042,409	2,150,174	2,163,998	2,184,532	2,199,964	2,240,098
Industrial	429,519	475,737	410,078	555,861	501,507	611,691	563,584	654,865	644,433	675,511	683,621	682,631	686,524	701,595
Mining and quarrying	24,609	28,392	26,215	40,215	33,834	36,544	37,390	41,016	40,026	39,618	39,446	41,385	42,061	42,917
Manufacturing	336,688	372,441	310,292	437,965	391,548	478,355	442,682	510,317	498,154	521,919	527,961	531,815	535,651	547,630
Electricity, gas, steam and air conditioning supply	58,438	64,772	63,817	65,220	64,941	83,868	72,188	89,950	91,968	99,202	101,539	94,670	94,005	95,883
Water supply; sewerage, waste management and remediation activities	9,784	10,132	9,754	12,461	11,184	12,924	11,324	13,582	14,285	14,772	14,676	14,761	14,806	15,165
Service	872,187	970,408	962,029	1,142,649	1,080,761	1,235,074	1,203,311	1,356,872	1,397,975	1,474,663	1,480,377	1,501,900	1,513,440	1,538,503
Construction	36,637	39,866	38,266	47,429	43,846	47,323	47,112	57,507	62,702	69,736	69,814	70,987	72,493	74,667
Wholesale and retail trade; repair of motor vehicles and motorcycles	158,282	161,462	170,249	185,099	209,383	227,544	235,291	253,319	244,968	268,211	270,854	272,957	272,052	276,050
Transportation and storage	224,036	246,122	244,653	319,612	252,425	306,622	295,250	341,825	389,466	400,640	391,255	399,342	401,118	405,903
Accommodation and food service activities	82,673	87,544	86,473	93,330	82,775	89,515	87,812	104,480	101,282	106,737	107,518	109,147	109,880	110,506
Information and communication	35,317	35,750	36,160	43,479	42,842	51,466	50,546	67,738	80,779	84,558	83,445	84,157	84,914	85,677
Financial and insurance activities	28,903	30,533	30,451	33,520	35,150	40,429	39,791	43,144	46,163	48,269	49,117	49,643	50,639	51,774
Real estate activities	165,483	214,100	197,570	246,392	245,974	295,566	267,900	267,868	269,755	281,665	290,816	293,615	297,477	304,884
Professional, scientific and technical activities	1,232	1,323	1,116	1,366	1,081	1,243	1,407	1,586	1,691	1,757	1,787	1,885	1,938	1,966
Administrative and support service activities	814	844	888	631	680	703	699	1,033	1,037	1,078	1,191	1,207	1,184	1,197
Public administration and defence; compulsory social security	-	-	-	-	-	-	-	-	-	-	-	-	-	-
Education	44,120	46,704	52,021	55,518	48,476	50,505	52,355	59,549	58,297	62,847	64,674	65,535	66,565	67,195
Human health and social work activities	64,460	74,733	72,314	77,890	79,100	82,661	83,378	105,572	95,537	100,593	100,182	102,801	104,037	106,787
Arts, entertainment and recreation	766	903	926	1,006	715	833	934	1,163	1,053	1,251	1,280	1,275	1,267	1,288
Other service activities	29,464	30,523	30,942	37,377	38,314	40,664	40,836	52,089	45,247	47,321	48,445	49,347	49,877	50,610
Activities of households as employers	-	-	-	-	-	-	-	-	-	-	-	-	-	-
TOTAL	1,394,198	1,550,558	1,494,523	1,832,622	1,719,947	2,003,021	1,925,154	2,183,807	2,217,021	2,319,674	2,334,790	2,373,596	2,391,826	2,434,393

TABLE 15-1 GROWTH RATE OF ANNUAL DEPRECIATION OF PRIVATE SECTOR AT CURRENT REPLACEMENT COST

(Unit - Percentage)

Sector	2008	2009	2010	2011	2012	2013	2014	2015	2016	2017	2018r	2019r	2020r	2021p
Agriculture	2.7	12.9	17.2	9.6	2.7	13.5	1.3	8.7	1.5	-2.9	0.8	10.8	1.6	1.1
Agriculture, forestry and fishing	2.7	12.9	17.2	9.6	2.7	13.5	1.3	8.7	1.5	-2.9	0.8	10.8	1.6	1.1
None Agriculture	5.5	11.1	-5.1	23.8	-6.8	16.7	-4.3	13.9	1.5	5.3	0.6	0.9	0.7	1.8
Industrial	3.6	10.8	-13.8	35.6	-9.8	22.0	-7.9	16.2	-1.6	4.8	1.2	-0.1	0.6	2.2
Mining and quarrying	-1.5	15.4	-7.7	53.4	-15.9	8.0	2.3	9.7	-2.4	-1.0	-0.4	4.9	1.6	2.0
Manufacturing	2.7	10.6	-16.7	41.1	-10.6	22.2	-7.5	15.3	-2.4	4.8	1.2	0.7	0.7	2.2
Electricity, gas, steam and air conditioning supply	11.1	10.8	-1.5	2.2	-0.4	29.1	-13.9	24.6	2.2	7.9	2.4	-6.8	-0.7	2.0
Water supply; sewerage, waste management and remediation activities	8.8	3.6	-3.7	27.8	-10.2	15.6	-12.4	19.9	5.2	3.4	-0.7	0.6	0.3	2.4
Service	6.4	11.3	-0.9	18.8	-5.4	14.3	-2.6	12.8	3.0	5.5	0.4	1.5	0.8	1.7
Construction	5.0	8.8	-4.0	23.9	-7.6	7.9	-0.4	22.1	9.0	11.2	0.1	1.7	2.1	3.0
Wholesale and retail trade; repair of motor vehicles and motorcycles	10.2	2.0	5.4	8.7	13.1	8.7	3.4	7.7	-3.3	9.5	1.0	0.8	-0.3	1.5
Transportation and storage	7.4	9.9	-0.6	30.6	-21.0	21.5	-3.7	15.8	13.9	2.9	-2.3	2.1	0.4	1.2
Accommodation and food service activities	11.0	5.9	-1.2	7.9	-11.3	8.1	-1.9	19.0	-3.1	5.4	0.7	1.5	0.7	0.6
Information and communication	5.5	1.2	1.1	20.2	-1.5	20.1	-1.8	34.0	19.3	4.7	-1.3	0.9	0.9	0.9
Financial and insurance activities	9.0	5.6	-0.3	10.1	4.9	15.0	-1.6	8.4	7.0	4.6	1.8	1.1	2.0	2.2
Real estate activities	1.8	29.4	-7.7	24.7	-0.2	20.2	-9.4	-0.0	0.7	4.4	3.2	1.0	1.3	2.5
Professional, scientific and technical activities	-10.6	7.4	-15.6	22.4	-20.9	15.0	13.2	12.7	6.6	3.9	1.7	5.5	2.8	1.4
Administrative and support service activities	5.3	3.6	5.2	-28.9	7.8	3.3	-0.5	47.7	0.4	4.0	10.5	1.4	-1.9	1.1
Public administration and defence; compulsory social security	-	-	-	-	-	-	-	-	-	-	-	-	-	-
Education	10.8	5.9	11.4	6.7	-12.7	4.2	3.7	13.7	-2.1	7.8	2.9	1.3	1.6	0.9
Human health and social work activities	-1.5	15.9	-3.2	7.7	1.6	4.5	0.9	26.6	-9.5	5.3	-0.4	2.6	1.2	2.6
Arts, entertainment and recreation	-0.3	18.0	2.5	8.7	-29.0	16.5	12.2	24.5	-9.4	18.8	2.3	-0.4	-0.7	1.7
Other service activities	8.7	3.6	1.4	20.8	2.5	6.1	0.4	27.6	-13.1	4.6	2.4	1.9	1.1	1.5
Activities of households as employers	-	-	-	-	-	-	-	-	-	-	-	-	-	-
TOTAL	5.3	11.2	-3.6	22.6	-6.1	16.5	-3.9	13.4	1.5	4.6	0.7	1.7	0.8	1.8

TABLE 16 ANNUAL DEPRECIATION OF PRIVATE SECTOR : CHAIN VOLUME MEASURES (reference year = 2002)

(Unit - Millions of Baht)

Sector	2008	2009	2010	2011	2012	2013	2014	2015	2016	2017	2018r	2019r	2020r	2021p
Agriculture	65,619	68,174	69,845	71,299	75,268	76,000	78,486	81,166	83,856	87,376	90,670	94,605	95,584	96,077
Agriculture, forestry and fishing	65,619	68,174	69,845	71,299	75,268	76,000	78,486	81,166	83,856	87,376	90,670	94,605	95,584	96,077
None Agriculture	1,035,326	1,062,432	1,084,318	1,118,519	1,172,935	1,225,962	1,266,760	1,286,444	1,299,141	1,334,333	1,367,546	1,400,862	1,413,981	1,428,223
Industrial	373,722	393,713	400,007	408,771	438,912	450,401	463,825	462,537	448,785	485,511	501,801	513,722	525,637	533,620
Mining and quarrying	22,422	24,285	26,139	29,452	29,749	31,214	33,541	34,667	34,988	33,126	34,248	36,048	36,639	37,297
Manufacturing	300,925	316,827	320,695	324,902	327,667	334,247	345,945	339,144	346,778	378,780	392,094	402,276	408,152	414,976
Electricity, gas, steam and air conditioning supply	41,519	43,542	43,592	43,181	66,545	69,602	68,748	73,722	49,474	54,257	55,665	55,724	59,906	60,256
Water supply; sewerage, waste management and remediation activities	8,108	8,350	9,022	11,051	12,439	13,123	12,915	13,665	11,902	11,906	12,231	12,522	12,760	12,902
Service	662,788	671,227	686,572	711,047	736,962	776,788	803,975	823,365	847,229	848,798	866,558	887,911	890,646	897,550
Construction	35,957	36,091	36,551	39,436	41,055	42,876	45,242	46,156	46,476	49,271	50,618	52,738	54,648	55,880
Wholesale and retail trade; repair of motor vehicles and motorcycles	134,283	131,855	140,814	154,647	172,403	182,525	175,158	184,063	184,869	194,178	199,685	207,972	207,910	208,307
Transportation and storage	175,231	190,889	188,837	186,501	183,871	200,808	212,455	215,739	222,048	217,421	219,462	219,225	214,409	216,905
Accommodation and food service activities	67,121	70,275	70,037	74,690	75,273	80,039	84,856	87,720	87,032	89,078	91,450	94,731	95,342	95,286
Information and communication	26,731	26,634	26,340	26,132	31,325	32,771	32,260	34,776	37,773	40,946	42,006	42,589	42,256	41,934
Financial and insurance activities	23,358	24,956	26,403	27,879	28,202	29,181	29,769	30,499	31,308	32,215	32,557	34,337	35,099	35,366
Real estate activities	91,973	84,152	88,074	88,165	90,474	91,639	97,926	96,685	90,239	87,534	89,806	92,128	93,108	94,181
Professional, scientific and technical activities	914	889	920	943	983	1,101	1,204	1,169	1,118	1,142	1,189	1,210	1,305	1,295
Administrative and support service activities	641	671	700	494	711	649	765	932	782	821	892	941	946	940
Public administration and defence; compulsory social security	-	-	-	-	-	-	-	-	-	-	-	-	-	-
Education	36,201	35,287	36,425	37,901	38,781	41,054	42,709	43,758	47,079	50,100	50,779	51,857	52,850	52,737
Human health and social work activities	47,841	50,483	50,622	53,974	54,929	57,853	58,842	61,602	68,994	70,280	72,636	75,775	78,819	79,919
Arts, entertainment and recreation	785	884	894	950	1,360	1,456	1,871	1,801	1,234	1,267	1,337	1,402	1,429	1,447
Other service activities	20,562	20,285	20,610	22,933	24,963	26,355	27,917	29,134	41,961	29,482	29,650	30,665	31,334	31,649
Activities of households as employers	-	-	-	-	-	-	-	-	-	-	-	-	-	-
TOTAL	1,100,947	1,130,703	1,154,293	1,189,688	1,248,178	1,301,061	1,344,301	1,367,245	1,383,248	1,422,341	1,459,075	1,496,652	1,510,786	1,525,406

TABLE 16-1 GROWTH RATE OF ANNUAL DEPRECIATION OF PRIVATE SECTOR : CHAIN VOLUME MEASURES (reference year = 2002)

(Unit - Percentage)

Sector	2008	2009	2010	2011	2012	2013	2014	2015	2016	2017	2018r	2019r	2020r	2021p
Agriculture	0.8	3.9	2.5	2.1	5.6	1.0	3.3	3.4	3.3	4.2	3.8	4.3	1.0	0.5
Agriculture, forestry and fishing	0.8	3.9	2.5	2.1	5.6	1.0	3.3	3.4	3.3	4.2	3.8	4.3	1.0	0.5
None Agriculture	4.0	2.6	2.1	3.2	4.9	4.5	3.3	1.6	1.0	2.7	2.5	2.4	0.9	1.0
Industrial	1.2	5.3	1.6	2.2	7.4	2.6	3.0	-0.3	-3.0	8.2	3.4	2.4	2.3	1.5
Mining and quarrying	0.3	8.3	7.6	12.7	1.0	4.9	7.5	3.4	0.9	-5.3	3.4	5.3	1.6	1.8
Manufacturing	0.7	5.3	1.2	1.3	0.9	2.0	3.5	-2.0	2.3	9.2	3.5	2.6	1.5	1.7
Electricity, gas, steam and air conditioning supply	4.7	4.9	0.1	-0.9	54.1	4.6	-1.2	7.2	-32.9	9.7	2.6	0.1	7.5	0.6
Water supply; sewerage, waste management and remediation activities	-1.0	3.0	8.0	22.5	12.6	5.5	-1.6	5.8	-12.9	0.0	2.7	2.4	1.9	1.1
Service	5.5	1.3	2.3	3.6	3.6	5.4	3.5	2.4	2.9	0.2	2.1	2.5	0.3	0.8
Construction	3.5	0.4	1.3	7.9	4.1	4.4	5.5	2.0	0.7	6.0	2.7	4.2	3.6	2.3
Wholesale and retail trade; repair of motor vehicles and motorcycles	8.3	-1.8	6.8	9.8	11.5	5.9	-4.0	5.1	0.4	5.0	2.8	4.2	-0.0	0.2
Transportation and storage	1.2	8.9	-1.1	-1.2	-1.4	9.2	5.8	1.5	2.9	-2.1	0.9	-0.1	-2.2	1.2
Accommodation and food service activities	3.0	4.7	-0.3	6.6	0.8	6.3	6.0	3.4	-0.8	2.4	2.7	3.6	0.6	-0.1
Information and communication	8.8	-0.4	-1.1	-0.8	19.9	4.6	-1.6	7.8	8.6	8.4	2.6	1.4	-0.8	-0.8
Financial and insurance activities	4.5	6.8	5.8	5.6	1.2	3.5	2.0	2.5	2.7	2.9	1.1	5.5	2.2	0.8
Real estate activities	11.6	-8.5	4.7	0.1	2.6	1.3	6.9	-1.3	-6.7	-3.0	2.6	2.6	1.1	1.2
Professional, scientific and technical activities	7.4	-2.7	3.5	2.5	4.2	12.0	9.4	-2.9	-4.4	2.1	4.1	1.8	7.9	-0.8
Administrative and support service activities	6.8	4.7	4.3	-29.4	43.9	-8.7	17.9	21.8	-16.1	5.0	8.6	5.5	0.5	-0.6
Public administration and defence; compulsory social security	-	-	-	-	-	-	-	-	-	-	-	-	-	-
Education	5.2	-2.5	3.2	4.1	2.3	5.9	4.0	2.5	7.6	6.4	1.4	2.1	1.9	-0.2
Human health and social work activities	0.7	5.5	0.3	6.6	1.8	5.3	1.7	4.7	12.0	1.9	3.4	4.3	4.0	1.4
Arts, entertainment and recreation	-2.6	12.6	1.1	6.3	43.2	7.1	28.5	-3.7	-31.5	2.7	5.5	4.9	1.9	1.3
Other service activities	4.6	-1.3	1.6	11.3	8.9	5.6	5.9	4.4	44.0	-29.7	0.6	3.4	2.2	1.0
Activities of households as employers	-	-	-	-	-	-	-	-	-	-	-	-	-	-
TOTAL	3.8	2.7	2.1	3.1	4.9	4.2	3.3	1.7	1.2	2.8	2.6	2.6	0.9	1.0

TABLE 17 ANNUAL DEPRECIATION OF PUBLIC SECTOR AT CURRENT REPLACEMENT COST

(Unit - Millions of Baht)

Sector	2008	2009	2010	2011	2012	2013	2014	2015	2016	2017	2018r	2019r	2020r	2021p
Agriculture	39,620	43,607	50,439	50,615	53,277	67,030	69,092	75,192	75,584	73,372	73,581	57,366	56,879	58,036
Agriculture, forestry and fishing	39,620	43,607	50,439	50,615	53,277	67,030	69,092	75,192	75,584	73,372	73,581	57,366	56,879	58,036
None Agriculture	375,937	408,811	419,299	461,010	578,454	578,657	618,986	629,565	537,675	550,713	580,988	580,272	586,418	596,815
Industrial	179,464	199,066	199,432	231,571	241,153	241,723	255,142	255,032	252,200	263,102	268,502	272,161	275,091	278,320
Mining and quarrying	2,357	2,654	2,463	3,388	4,263	4,246	4,683	4,623	2,994	2,964	2,965	2,901	2,967	2,984
Manufacturing	9,699	10,729	11,454	10,724	15,763	15,100	17,247	18,290	12,145	12,725	12,540	13,245	13,723	14,030
Electricity, gas, steam and air conditioning supply	148,056	165,570	165,412	196,867	199,153	201,398	211,348	209,883	216,816	226,478	232,251	235,088	237,321	239,483
Water supply; sewerage, waste management and remediation activities	19,353	20,113	20,103	20,593	21,974	20,979	21,864	22,236	20,245	20,935	20,747	20,928	21,079	21,822
Service	196,473	209,745	219,867	229,438	337,301	336,934	363,844	374,533	285,475	287,611	312,486	308,110	311,327	318,495
Construction	14,036	14,014	15,358	14,928	22,237	21,014	23,968	26,261	14,565	16,199	16,249	15,943	16,784	17,288
Wholesale and retail trade; repair of motor vehicles and motorcycles	795	779	838	799	1,327	1,304	1,468	1,452	984	1,077	1,197	1,124	1,147	1,192
Transportation and storage	96,290	99,992	106,557	116,183	176,286	171,205	189,243	191,693	161,873	158,601	176,934	171,718	172,088	174,971
Accommodation and food service activities	17,768	17,211	19,008	19,428	27,518	25,174	27,170	28,683	17,873	18,836	18,736	19,140	19,421	19,679
Information and communication	11,013	11,720	11,375	16,534	16,185	18,195	22,624	23,541	16,300	17,062	18,529	18,712	18,817	20,280
Financial and insurance activities	3,130	3,317	3,531	2,816	5,299	5,393	5,679	5,673	3,933	4,112	4,633	4,423	4,656	5,008
Real estate activities	6,805	11,435	9,266	13,351	14,592	19,100	11,716	14,634	8,745	9,131	8,193	10,552	10,764	11,032
Professional, scientific and technical activities	216	280	259	275	330	346	422	436	291	302	303	355	379	384
Administrative and support service activities	1,900	1,960	2,059	2,417	2,612	2,741	2,698	2,722	2,926	3,042	3,288	3,297	3,251	3,289
Public administration and defence; compulsory social security	24,975	27,240	29,267	22,270	39,979	42,909	45,209	42,173	33,963	33,842	39,392	39,434	40,013	40,767
Education	943	967	1,210	1,213	909	880	955	1,111	856	922	949	962	984	1,023
Human health and social work activities	13,541	15,601	15,488	14,005	22,728	21,433	23,764	26,146	17,391	18,311	17,651	16,416	16,908	17,384
Arts, entertainment and recreation	863	900	1,039	1,103	696	756	634	859	928	1,103	1,109	1,095	1,092	1,101
Other service activities	4,198	4,329	4,611	4,116	6,603	6,483	8,293	9,149	4,849	5,072	5,323	4,940	5,023	5,097
Activities of households as employers	-	-	-	-	-	-	-	-	-	-	-	-	-	-
TOTAL	415,558	452,418	469,738	511,625	631,731	645,688	688,078	704,757	613,260	624,085	654,568	637,638	643,297	654,851

TABLE 17-1 GROWTH RATE OF ANNUAL DEPRECIATION OF PUBLIC SECTOR AT CURRENT REPLACEMENT COST

(Unit - Percentage)

Sector	2008	2009	2010	2011	2012	2013	2014	2015	2016	2017	2018r	2019r	2020r	2021p
Agriculture	14.9	10.1	15.7	0.3	5.3	25.8	3.1	8.8	0.5	-2.9	0.3	-22.0	-0.8	2.0
Agriculture, forestry and fishing	14.9	10.1	15.7	0.3	5.3	25.8	3.1	8.8	0.5	-2.9	0.3	-22.0	-0.8	2.0
None Agriculture	14.4	8.7	2.6	9.9	25.5	0.0	7.0	1.7	-14.6	2.4	5.5	-0.1	1.1	1.8
Industrial	15.8	10.9	0.2	16.1	4.1	0.2	5.6	-0.0	-1.1	4.3	2.1	1.4	1.1	1.2
Mining and quarrying	16.9	12.6	-7.2	37.5	25.8	-0.4	10.3	-1.3	-35.2	-1.0	0.0	-2.2	2.3	0.5
Manufacturing	18.8	10.6	6.8	-6.4	47.0	-4.2	14.2	6.0	-33.6	4.8	-1.5	5.6	3.6	2.2
Electricity, gas, steam and air conditioning supply	15.3	11.8	-0.1	19.0	1.2	1.1	4.9	-0.7	3.3	4.5	2.5	1.2	1.0	0.9
Water supply; sewerage, waste management and remediation activities	18.6	3.9	-0.1	2.4	6.7	-4.5	4.2	1.7	-9.0	3.4	-0.9	0.9	0.7	3.5
Service	13.1	6.8	4.8	4.4	47.0	-0.1	8.0	2.9	-23.8	0.7	8.6	-1.4	1.0	2.3
Construction	18.5	-0.2	9.6	-2.8	49.0	-5.5	14.1	9.6	-44.5	11.2	0.3	-1.9	5.3	3.0
Wholesale and retail trade; repair of motor vehicles and motorcycles	19.9	-2.1	7.6	-4.6	66.1	-1.7	12.5	-1.1	-32.3	9.5	11.1	-6.1	2.1	3.9
Transportation and storage	15.7	3.8	6.6	9.0	51.7	-2.9	10.5	1.3	-15.6	-2.0	11.6	-2.9	0.2	1.7
Accommodation and food service activities	21.5	-3.1	10.4	2.2	41.6	-8.5	7.9	5.6	-37.7	5.4	-0.5	2.2	1.5	1.3
Information and communication	-4.8	6.4	-2.9	45.3	-2.1	12.4	24.3	4.1	-30.8	4.7	8.6	1.0	0.6	7.8
Financial and insurance activities	17.4	6.0	6.4	-20.2	88.2	1.8	5.3	-0.1	-30.7	4.6	12.7	-4.5	5.3	7.6
Real estate activities	-13.2	68.0	-19.0	44.1	9.3	30.9	-38.7	24.9	-40.2	4.4	-10.3	28.8	2.0	2.5
Professional, scientific and technical activities	-30.3	29.4	-7.4	6.1	20.2	4.7	22.0	3.2	-33.3	3.9	0.3	17.1	6.8	1.4
Administrative and support service activities	8.1	3.2	5.0	17.4	8.1	4.9	-1.6	0.9	7.5	4.0	8.1	0.3	-1.4	1.2
Public administration and defence; compulsory social security	16.6	9.1	7.4	-23.9	79.5	7.3	5.4	-6.7	-19.5	-0.4	16.4	0.1	1.5	1.9
Education	13.2	2.5	25.2	0.2	-25.1	-3.2	8.6	16.3	-23.0	7.8	2.9	1.3	2.3	4.0
Human health and social work activities	5.3	15.2	-0.7	-9.6	62.3	-5.7	10.9	10.0	-33.5	5.3	-3.6	-7.0	3.0	2.8
Arts, entertainment and recreation	15.0	4.2	15.4	6.3	-36.9	8.6	-16.2	35.6	8.0	18.8	0.5	-1.2	-0.3	0.9
Other service activities	22.4	3.1	6.5	-10.7	60.4	-1.8	27.9	10.3	-47.0	4.6	5.0	-7.2	1.7	1.5
Activities of households as employers	-	-	-	-	-	-	-	-	-	-	-	-	-	-
TOTAL	14.4	8.9	3.8	8.9	23.5	2.2	6.6	2.4	-13.0	1.8	4.9	-2.6	0.9	1.8

TABLE 18 ANNUAL DEPRECIATION OF PUBLIC SECTOR : CHAIN VOLUME MEASURES (reference year = 2002)

(Unit - Millions of Baht)

Sector	2008	2009	2010	2011	2012	2013	2014	2015	2016	2017	2018r	2019r	2020r	2021p
Agriculture	27,232	27,663	31,584	33,122	37,860	41,537	42,692	41,950	42,304	43,559	44,518	45,856	50,140	51,001
Agriculture, forestry and fishing	27,232	27,663	31,584	33,122	37,860	41,537	42,692	41,950	42,304	43,559	44,518	45,856	50,140	51,001
None Agriculture	275,990	287,731	291,830	324,430	315,619	318,533	324,001	342,654	368,519	377,741	388,591	403,162	415,745	419,099
Industrial	129,917	137,614	138,297	163,328	144,855	139,317	145,272	149,681	167,755	172,574	178,915	186,266	187,146	187,170
Mining and quarrying	2,174	2,305	2,468	2,802	2,945	3,187	3,231	3,479	3,477	3,206	3,325	3,350	3,494	3,505
Manufacturing	8,591	9,045	9,357	7,072	6,766	6,458	6,684	6,028	5,998	6,552	6,666	7,171	7,276	7,408
Electricity, gas, steam and air conditioning supply	103,483	109,970	110,032	136,497	119,417	114,137	119,474	123,873	141,850	145,941	151,625	157,760	158,046	157,572
Water supply; sewerage, waste management and remediation activities	15,789	16,357	16,630	15,616	14,656	14,626	14,854	15,734	16,038	16,121	16,519	17,047	17,488	17,894
Service	145,971	149,954	153,412	160,908	170,495	177,855	177,644	191,262	199,804	204,150	208,516	215,691	227,468	230,899
Construction	9,040	8,093	8,659	7,554	7,890	8,463	8,586	9,559	11,774	10,827	11,087	11,476	12,243	12,437
Wholesale and retail trade; repair of motor vehicles and motorcycles	677	651	710	780	687	727	661	728	718	754	775	826	907	930
Transportation and storage	73,244	75,679	78,038	81,375	91,641	95,182	95,670	105,023	110,365	116,814	119,016	123,546	132,054	133,451
Accommodation and food service activities	13,352	12,825	13,953	14,709	15,420	15,961	15,966	17,347	16,675	16,987	17,248	17,838	17,812	17,954
Information and communication	8,141	8,556	7,275	10,303	7,898	8,972	9,447	9,461	9,013	9,812	10,254	11,248	12,058	12,972
Financial and insurance activities	2,472	2,659	2,970	3,032	3,093	3,136	3,132	2,873	2,761	2,841	2,899	3,046	3,180	3,373
Real estate activities	3,811	4,528	3,515	5,638	5,372	5,844	4,016	5,777	3,042	2,805	2,548	2,860	2,909	2,941
Professional, scientific and technical activities	158	186	211	194	212	236	256	251	238	232	239	274	300	300
Administrative and support service activities	1,469	1,534	1,567	1,843	1,779	1,902	1,914	1,881	2,234	2,351	2,480	2,679	2,731	2,742
Public administration and defence; compulsory social security	19,240	20,511	21,824	21,952	22,888	22,034	23,414	22,032	21,153	21,512	22,729	22,894	23,438	23,554
Education	758	671	789	956	658	727	741	717	754	692	700	713	725	745
Human health and social work activities	9,823	10,322	10,825	8,045	8,641	9,402	9,065	9,700	10,905	9,868	9,996	9,515	9,964	10,162
Arts, entertainment and recreation	869	862	967	1,111	805	881	748	919	1,426	1,480	1,541	1,622	1,675	1,679
Other service activities	2,862	2,818	2,961	2,758	3,222	3,535	4,451	4,675	8,610	4,392	4,437	4,333	4,567	4,585
Activities of households as employers	-	-	-	-	-	-	-	-	-	-	-	-	-	-
TOTAL	303,470	315,607	323,981	357,981	354,286	360,183	366,764	385,119	411,434	421,965	433,753	449,654	466,204	470,341

TABLE 18-1 GROWTH RATE OF ANNUAL DEPRECIATION OF PUBLIC SECTOR : CHAIN VOLUME MEASURES (reference year = 2002)

(Unit - Percentage)

Sector	2008	2009	2010	2011	2012	2013	2014	2015	2016	2017	2018r	2019r	2020r	2021p
Agriculture	7.3	1.6	14.2	4.9	14.3	9.7	2.8	-1.7	0.8	3.0	2.2	3.0	9.3	1.7
Agriculture, forestry and fishing	7.3	1.6	14.2	4.9	14.3	9.7	2.8	-1.7	0.8	3.0	2.2	3.0	9.3	1.7
None Agriculture	4.6	4.3	1.4	11.2	-2.7	0.9	1.7	5.8	7.5	2.5	2.9	3.7	3.1	0.8
Industrial	5.0	5.9	0.5	18.1	-11.3	-3.8	4.3	3.0	12.1	2.9	3.7	4.1	0.5	0.0
Mining and quarrying	14.6	6.0	7.1	13.5	5.1	8.2	1.4	7.7	-0.1	-7.8	3.7	0.8	4.3	0.3
Manufacturing	12.7	5.3	3.4	-24.4	-4.3	-4.6	3.5	-9.8	-0.5	9.2	1.7	7.6	1.5	1.8
Electricity, gas, steam and air conditioning supply	4.4	6.3	0.1	24.1	-12.5	-4.4	4.7	3.7	14.5	2.9	3.9	4.0	0.2	-0.3
Water supply; sewerage, waste management and remediation activities	4.8	3.6	1.7	-6.1	-6.1	-0.2	1.6	5.9	1.9	0.5	2.5	3.2	2.6	2.3
Service	4.2	2.7	2.3	4.9	6.0	4.3	-0.1	7.7	4.5	2.2	2.1	3.4	5.5	1.5
Construction	11.3	-10.5	7.0	-12.8	4.4	7.3	1.5	11.3	23.2	-8.0	2.4	3.5	6.7	1.6
Wholesale and retail trade; repair of motor vehicles and motorcycles	13.0	-3.8	9.1	9.9	-11.9	5.8	-9.1	10.1	-1.4	5.0	2.8	6.6	9.8	2.5
Transportation and storage	3.8	3.3	3.1	4.3	12.6	3.9	0.5	9.8	5.1	5.8	1.9	3.8	6.9	1.1
Accommodation and food service activities	8.1	-3.9	8.8	5.4	4.8	3.5	0.0	8.6	-3.9	1.9	1.5	3.4	-0.1	0.8
Information and communication	-6.3	5.1	-15.0	41.6	-23.3	13.6	5.3	0.1	-4.7	8.9	4.5	9.7	7.2	7.6
Financial and insurance activities	8.4	7.6	11.7	2.1	2.0	1.4	-0.1	-8.3	-3.9	2.9	2.0	5.1	4.4	6.1
Real estate activities	-8.3	18.8	-22.4	60.4	-4.7	8.8	-31.3	43.8	-47.3	-7.8	-9.2	12.2	1.7	1.1
Professional, scientific and technical activities	-19.4	17.7	13.4	-8.1	9.3	11.3	8.5	-2.0	-5.2	-2.5	3.0	14.6	9.5	0.0
Administrative and support service activities	5.9	4.4	2.2	17.6	-3.5	6.9	0.6	-1.7	18.8	5.2	5.5	8.0	1.9	0.4
Public administration and defence; compulsory social security	7.7	6.6	6.4	0.6	4.3	-3.7	6.3	-5.9	-4.0	1.7	5.7	0.7	2.4	0.5
Education	9.1	-11.5	17.6	21.2	-31.2	10.5	1.9	-3.2	5.2	-8.2	1.2	1.9	1.7	2.8
Human health and social work activities	3.1	5.1	4.9	-25.7	7.4	8.8	-3.6	7.0	12.4	-9.5	1.3	-4.8	4.7	2.0
Arts, entertainment and recreation	9.6	-0.8	12.2	14.9	-27.5	9.4	-15.1	22.9	55.2	3.8	4.1	5.3	3.3	0.2
Other service activities	13.1	-1.5	5.1	-6.9	16.8	9.7	25.9	5.0	84.2	-49.0	1.0	-2.3	5.4	0.4
Activities of households as employers	-	-	-	-	-	-	-	-	-	-	-	-	-	-
TOTAL	4.8	4.0	2.7	10.5	-1.0	1.7	1.8	5.0	6.8	2.6	2.8	3.7	3.7	0.9