



รายงานภาวะสังคม

2551



1.4

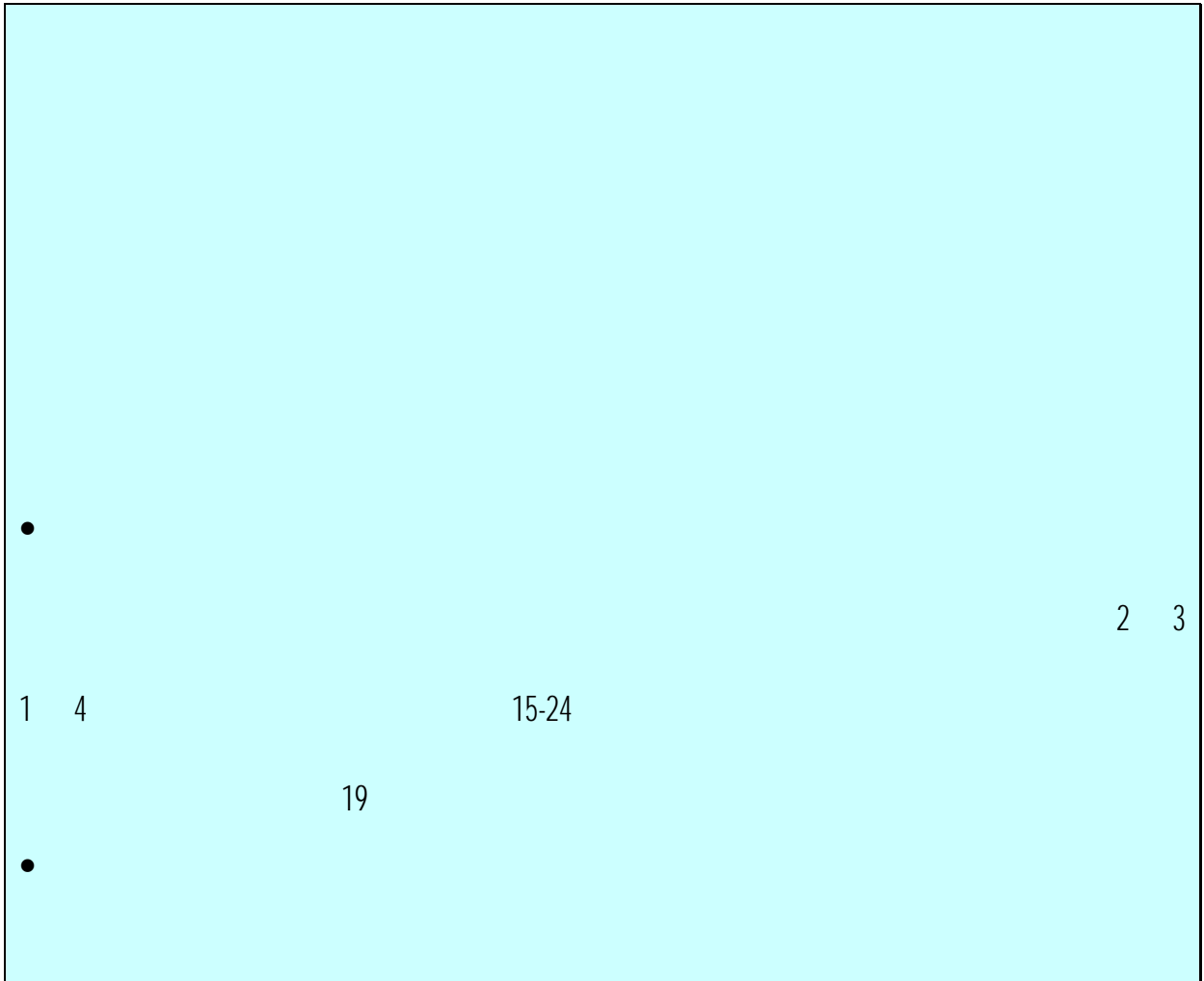
1.5

11



➤ :

ประเด็นหลัก



รายงานภาวะสังคมไทยไตรมาสสอง ปี 2551



:

- 2551 36.8
1
2.8
5.8 5.1
11.2
1.7 2549 1.6 1.4 2550 2551

1 .- . 2549-2551

	()			(%)	
	2549	2550	2551	2550	2551
	36.39	36.69	37.54	0.8	2.3
	35.50	35.80	36.80	0.9	2.8
	13.42	13.33	13.68	-0.7	2.7
	22.08	22.47	23.12	1.8	2.9
-	5.92	6.00	5.90	1.1	-1.5
-	2.28	2.34	2.42	2.6	3.1
-	5.48	5.52	5.71	0.8	3.5
-	2.32	2.40	2.44	3.6	1.7
-	1.06	1.08	1.18	1.1	9.9
-	4.79	4.89	5.23	2.2	6.8
-	0.52	0.62	0.46	18.2	-26.3
	0.61	0.58	0.51	-5.5	-11.2
(%)	1.7	1.6	1.4		

37

2.7

6.5

2.9

2550

2.4 4.3

26 6.5

15.0

1.5

8.0

1 5

2

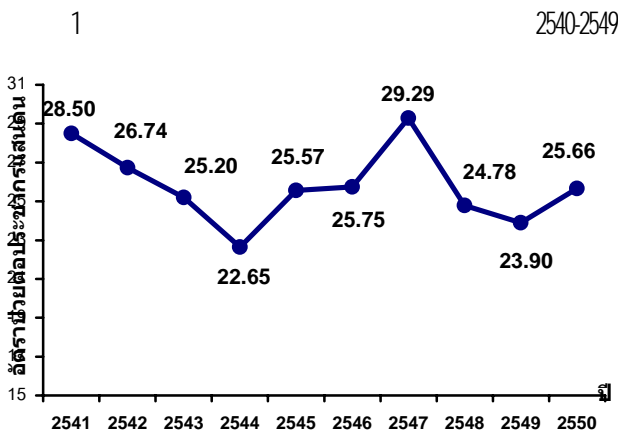
.. 2550-2551

	2550				2551	
	Q1	Q2	Q3	Q4	Q1	Q2
	41,490	25,268	43,223	32,269	36,657	24,890
	5,296	3,523	5,155	4,394	4,264	4,172
	1,075	942	930	946	1,827	1,338
	8	10	5	7	11	24
	5,742	21,166	25,363	13,310	10,599	25,520
	64	125	109	70	86	116
	4,899	5,950	4,706	3,471	4,339	4,398
	4	26	250	706	51	117
	821	882	3,561	11,582	5,343	1,409
	389	597	1,305	988	372	518
	4	3	4	7	2	0
	59,792	58,492	84,611	67,750	63,548	62,502
	95.17	93.1	134.67	107.8	100.7	99.02

35 26.3

2551 4,010 6.9 4,354

1,552 378



60 15

10 2547 2550

18,315 2548-49 25.66 31.9

16,072 5,129 18.7

8.9 15-24

3
2548-2550

36.82
49.87 2550 2546
3,819 4,869

	2546	2547	2548	2549	2550
14	2.76	3.71	3.25	4.17	4.46
15-24	36.82	48.40	43.92	48.78	49.87
25-34	43.50	47.34	36.82	33.59	34.80
35+	25.88	27.69	22.01	20.83	23.71

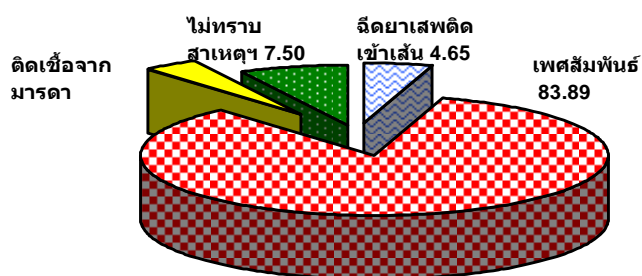
2527

: 2550 334,701 242,859

2

. . 2550

2547
9.98 2550 3.16

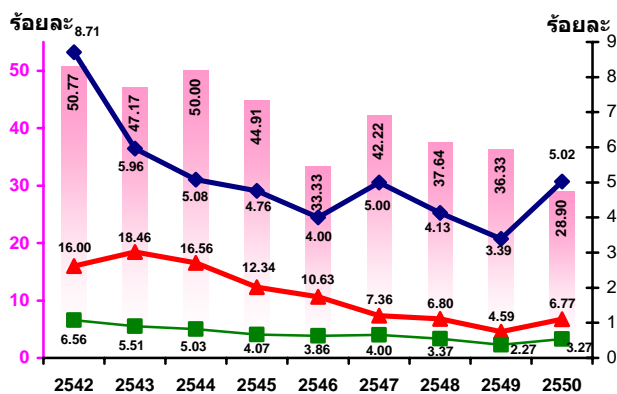


0.85 2550

:

(28.9) (12.1)

3
2542-2550



2549 2 3

4

1

69

:

(30 2551

(99.5)

2550

43

10,293 8,594 16.5
18,705 16,172

5
2547-2551

	()	(%)	()	(%)
2547	58,527	-	6,943	-
2548	61,421	4.9	6,575	-5.3
2549	55,701	-9.3	6,358	-3.3
2550	51,037	-8.4	6,364	0.09
2551	44,534	-12.7	5,707	-10.3

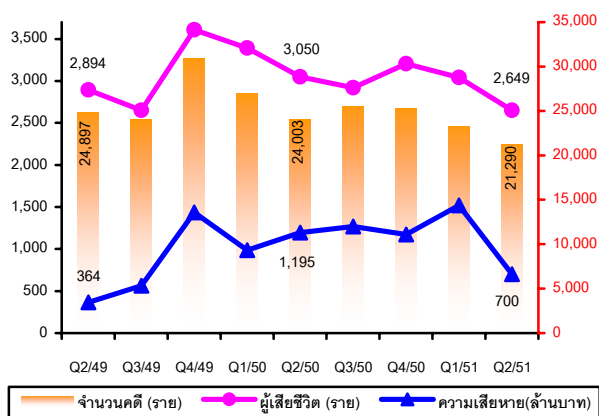
13.5

99 27 2551
83 2.79
36

3.16

6 2551
2547-2551
2549-2551

5
2549 - 2551



24,897

21,290

24,003

2549

11.3

3.6 2550

2551

"

10

10

2551

"

6

(2531)

:

	2550	2551
	39,166	37,533
-	10,333	11,843
-	28,833	25,710
	5,259	5,622
	39,243	35,507
-	30,005	27,833
-	9,238	7,674
	461,512	490,513
	545,180	569,195

:

2551 2550 39,166 37,533
 5,622 4.17 5,259 2550
 2551 6.90 2550
 child watch 2550
 5
 25.4 14.6
 3.9
 21.2 8.5

7

()

1.	
-	25.4
-	14.6
-	3.9
-	1.3
-	1.8
2.	
-	21.2
-	1.7
-	8.5
-	2.8

:

2550

2550 - 13-24
 6.4
 11.3
 5 10.2
 12 21.2 12-13
 49.2
 18.8
 89.3

2550	
•	12 (10.2%)
•	12-13 (21.2%)
•	5 (33.4%)
•	/ (49.2%)
(29.2%)
•	/ (89.3%)
•	/ (18.8%)

:

8

48.8

11

15-22

2550

67.2

:

62.9

39.1

	67.2	14.7	18.1
	48.8	33.5	17.7
	27.6	62.9	9.5
	39.1	41.7	19.2

2549-2550

-

30-40

36

30

56

2550

:



:

12 120 / .2 10 (PM₁₀)

9 10 (PM₁₀)
: / .

6

2549

		2549	2550	2551
-		43.0	101.3	157.7
-	6	118.9	128.0	125.6
-	4	111.3	99.8	107.4
-		166.9	57.2	105.2
-		162.5	138.3	129.4
-		178.5	172.5	135.5
-		132.3	154.8	131.0
-		213.4	91.2	104.0
		120 / .		

2550

157.7 / .

8

26

2

24 (/)

10

(VOCs)

2

12

100 ppb 9

151 ppb

41

10

: ppb

(107 ppb)

	2550				2551				
			>				>		
	-	107	5	151	10	-	98	-	122
-	101	1	120	3	-	82	-	120	3
-	82	-	120	3	-	79	-	109	1
-	157	11	127	6	-	157	11	127	6
-	-	-	105	1	-	-	-	105	1
-	75	-	127	3	-	75	-	127	3
-	87	-	105	1	-	87	-	105	1
-	95	-	150	7	-	95	-	150	7
-	86	-	125	4	-	86	-	125	4
-	90	-	126	9	-	90	-	126	9
-	81	-	115	2	-	81	-	115	2
-	98	-	138	1	-	98	-	138	1
-	106	1	101	1	-	106	1	101	1
-	87	-	113	3	-	87	-	113	3
-	56	-	107	4	-	56	-	107	4
-	46	-	94	-	-	46	-	94	-
-	81	-	115	2	-	81	-	115	2
100 ppb									

1 (ppb)

70

76.8 72.5

70.9

11

24

	2550				2551	
	Q1	Q2	Q3	Q4	Q1	Q2
-	66.5	60.0	68.2	69.2	66.2	66.0
-	72.6	72.2	72.3	71.8	72.4	71.8
-	71.9	72.0	71.6	71.7	72.9	71.6
-	73.7	71.8	71.8	72.6	72.9	72.5
-	72.5	71.4	72.4	72.7	72.5	72.4
-	75.6	77.1	76.7	76.8	77.1	76.8

24 70

110

90

12

24 .

2546 .

23.24

/	2550				2551	
	Q1	Q2	Q3	Q4	Q1	Q2
.	71.6	70.8	70.5	71.6	71.6	70.9
.	64.6	-	-	-	64.8	-
.	64.6	-	-	-	64.5	-
.	64.0	63.6	63.5	64.0	63.1	63.2
.	-	64.3	64.7	65.3	64.7	64.4
.	62.7	60.7	60.8	61.8	62.3	61.2
.	62.7	61.5	60.9	64.2	57.7	58.5
.	61.8	62.2	61.7	61.3	61.5	61.5

42.70

34.05

2551

2.9

2.7



:

:



13

()	16	20	22	27	20	21
()	18	25	28	34	30	34
()	13	17	16	16	15	13
()	1	3	5	5	3	4
()	2	10	12	11	9	12
()	0	0	1	3	0	0

(.)
44.4

"
2551"
135
16
13

: . . 51

14

: ()

10,000	11	8.2
10,001 - 20,000	35	25.9
20,001 - 50,000	60	44.4
50,001 - 100,000	25	18.5
100,001 - 200,000	4	3.0
	135	100.0

: . . 51

" :
"

17,400 217 10

2

48,000



40

50

" " " "

:

60



2

37

45

15

•	70.4
•	68.9
•	68.1
•	60.0
•	55.6

16

•	41	30.4
•	21	15.6
•	20	14.8
•	19	14.1
•	18	13.3

1 3

1

2

3

4

18

.....

()

	2547			2548				2549				2550				2551	
	2	3	4	1	2	3	4	1	2	3	4	1	2	3	4	1	2
1.																	
() ^{1/}	34,189	35,712	35,591	34,050	34,675	36,303	36,002	34,638	35,502	36,345	36,257	35,253	35,751	37,122	36,873	35,820	-
()	2.5	1.5	1.5	2.5	2.0	1.3	1.5	1.9	1.7	1.2	1.3	1.6	1.6	1.2	1.1	1.7	-
()	2.5	1.5	1.5	2.5	2.0	1.3	1.5	1.9	1.7	1.2	1.3	1.6	1.6	1.2	1.1	1.7	-
	1.5	0.9	0.9	1.7	1.3	0.7	1.0	1.3	0.9	0.7	0.9	1.1	0.8	0.6	0.6	1.1	-
	3.2	1.9	2.1	4.1	2.8	2.1	2.2	2.7	2.2	2.2	2.1	2.5	2.3	1.9	1.6	2.7	-
	4.1	2.9	1.9	3.5	2.7	2.0	2.0	2.8	2.4	2.2	1.7	2.0	2.3	1.4	2.2	2.2	-
	3.0	3.1	1.6	3.8	2.2	2.0	1.9	2.9	2.4	1.2	1.4	1.8	2.3	2.2	1.4	2.0	-
	5.6	2.4	3.2	3.9	5.2	3.5	2.6	2.5	3.6	1.4	2.4	3.6	4.1	2.2	1.8	2.1	-
	4.7	3.1	2.8	3.0	3.4	2.7	2.4	2.6	3.8	2.2	2.2	2.4	3.2	2.3	2.1	2.3	-
()	100.0	100.0	100.0	100.0	100.0	100.0	100.0	100.0	100.0	100.0	100.0	100.0	100.0	100.0	100.0	100.0	-
	61.2	61.6	61.0	59.8	59.5	61.2	60.7	59.9	59.2	59.8	59.8	58.7	58.0	58.3	58.4	56.9	-
	14.4	14.1	14.3	14.7	14.4	13.8	14.3	14.1	14.5	14.2	14.4	14.8	15.0	14.8	14.5	15.3	-
	8.2	8.1	8.2	8.3	8.5	8.1	8.2	8.4	8.8	8.8	8.9	9.1	9.1	9.1	9.6	9.6	-
	3.3	3.4	3.1	3.4	3.6	3.4	3.4	3.3	3.3	3.2	3.3	3.3	3.3	3.4	3.3	3.2	-
	4.0	4.0	4.1	3.9	3.8	3.8	3.8	3.9	3.9	3.8	3.7	3.9	4.1	4.1	3.9	4.2	-
	8.9	8.8	9.2	9.9	10.2	9.7	9.6	10.4	10.3	10.2	9.9	10.2	10.5	10.3	10.3	10.8	-
() ^{2/}	966	1,582	774	1,178	758	828	564	1,247	732	695	650	1,075	942	930	946	1,827	1,338
	9	23	8	14	14	9	6	11	15	8	10	8	10	5	7	11	24
	81	99	74	75	69	62	62	53	68	93	66	64	125	109	70	86	116
	883	192	12	8	132	104	25	5	10	13	7	4	26	250	706	51	117
	128	106	71	258	2,283	1,739	366	347	601	1,645	1,368	821	882	3,561	11,582	5,343	1,409
	7,634	7,388	3,929	5,182	5,823	4,944	3,275	5,408	5,500	4,873	3,489	4,899	5,950	4,706	3,471	4,339	4,398
	27,562	40,252	28,842	37,209	28,583	47,915	29,062	39,788	28,872	45,195	31,435	41,490	25,268	43,223	32,269	36,654	24,890
	755	1,468	671	336	580	1,223	729	346	587	1,806	1,202	389	597	1,305	988	372	518
	6,518	11,466	5,951	5,564	14,315	16,593	7,265	5,320	14,517	18,051	8,941	5,742	21,166	25,363	13,310	10,599	25,520
	4,745	5,931	4,470	5,359	4,912	6,022	4,883	3,588	3,884	6,705	3,247	5,296	3,523	5,155	4,394	4,264	4,172
	6	3	3	6	3	2	4	7	6	10	3	4	3	4	7	2	-
2.																	
() ^{3/}	43.5	40.9	47.5	46.7	42.7	37.6	44.8	40.1	36.6	38.5	47.1	36.7	33.6	33.7	34.5	32.5	30.6
	25.7	28.2	29.3	29.3	31.1	30.8	31.0	28.8	17.5	32.9	30.2	27.0	28.3	33.1	24.1	25.1	24.3
	17.8	16.6	18.6	18.8	19.5	16.9	18.4	18.1	16.8	16.3	17.0	16.2	15.6	14.2	13.8	13.3	12.9
	27.6	31.3	33.9	32.0	45.9	40.0	42.7	34.8	45.8	46.8	40.9	47.0	50.4	58.3	59.0	69.2	78.7
	-	-	-	12.04	11.79	12.34	12.11	10.74	12.16	12.37	11.98	12.31	12.37	13.43	13.41	13.96	14.01
4/																	
3.																	
5/																	
()	602	609	589	640	476	631	1,678	817	518	923	617	581	808	464	828	634	439
	595	1,063	882	1,278	873	305	633	565	378	582	534	556	498	458	425	348	507
	416	178	141	219	152	145	192	148	182	191	152	335	200	394	258	291	233
1166/	3,580	3,910	3,642	2,637	2,464	2,758	3,167	2,734	3,530	3,443	3,277	4,062	3,483	3,533	3,521	4,431	4,786
	-	-	33	36	8	0	18	19	26	24	17	23	25	14	31	162	54

()

	2542	2543	2544	2545	2546	2547	2548	2549	2550
1.									
(/ /) ^{6/}	93,662	96,138	95,738	97,912	102,484	105,654	109,343	113,548	117,094
() ^{7/}	93.7	94.2	94.9	96.5	96.7	97.2	97.6	98.0	98.1
() ^{7/}	4.2	3.6	3.3	2.4	2.2	2.1	1.8	1.5	1.4
(35 / .) ^{6/}	1,201	1,045	883	783	697	787	754	578	597
() ^{9/}	1,654.80	1,714.02	1,783.38	1,809.63	1,845.04	1,798.06	1,878.92	2,079.57	-
()	67.00	72.33	80.39	98.98	101.67	107.05	114.31	124.38	-
()	250.20	291.84	317.67	391.45	451.45	503.10	530.75	618.20	-
()	218.90	257.59	277.71	340.95	380.75	444.16	490.53	586.82	-
()	216.60	259.02	287.50	340.99	389.83	477.35	544.05	659.57	-
/ / ()	30.30	32.32	32.91	38.12	39.33	38.93	42.02	45.62	-
() ()	8.40	9.24	8.43	12.17	13.41	13.54	14.83	15.86	-
/ ()	59.70	65.29	62.62	66.21	62.45	64.64	59.69	64.89	-
() ^{10/}	33.42	34.46	35.57	33.97	37.13	35.90	37.64	42.41	-
()	2.24	2.17	2.00	1.74	1.31	-	-	-	-
()	12.53	11.91	13.34	13.04	12.35	-	-	-	-
1	8.30	8.49	8.62	7.85	8.24	-	-	-	-
2	0.50	0.65	0.74	0.72	0.74	-	-	-	-
() ^{11/}	-	44.66	44.25	43.85	43.42	42.97	42.53	42.02	41.46
() ^{12/}	-	20.98	-	14.93	-	11.16	-	9.55	8.48
() ^{13/}	102.40	103.24	103.79	104.77	104.49	104.24	104.17	103.47	104.46
()	83.50	82.70	82.19	82.23	84.01	92.47	95.45	96.64	96.63
()	55.30	57.40	58.99	59.82	58.73	63.82	63.80	65.78	67.23
()	22.70	39.03	41.08	43.81	45.43	52.94	55.60	62.48	60.62
() ^{14/}	7.1	7.2	7.4	7.6	7.50	7.60	7.78	7.85	-
()	7.2	7.3	7.5	7.7	-	-	-	-	-
()	6.7	6.9	7.0	7.2	-	-	-	-	-
2.									
() ^{15/}	97.60	97.70	97.90	97.30	96.00	96.60	98.65	98.50	99.30
() ^{16/}	73.05	69.49	67.87	66.94	67.27	63.42	59.99	58.75	-

	2542	2543	2544	2545	2546	2547	2548	2549	2550
17/	← 78.2 →			92.30	93.73	95.42	96.32	97.75	98.75
-	-	-	-	11.48	12.77	13.28	13.84	14.31	14.71
- /	-	-	-	6.62	6.44	6.83	6.57	7.91	8.06
-	-	-	-	74.16	73.61	75.15	75.40	73.58	73.31
-	-	-	-	7.52	6.96	4.58	3.68	2.25	1.41
18/	17.36	17.49	17.29	20.15	21.34	21.86	22.73	23.20	23.77
()									
19/	-	-	18.7	20.9	22.9	21.3	20.6	20.2	19.8
19/	106.1	109.2	105.6	109.7	106.0	106.5	122.0	122.2	118.0
19/	53.9	55.8	56.7	60.5	71.5	71.5	73.5	69.3	62.6
20/	386.3	420.7	438.6	422.8	261.4	116.5	160.4	176.5	225.0
21/	13.64	18.57	17.22	15.68	15.16	13.83	12.08	11.85	12.92
3.									
- () ^{22/}	86.96	86.90	87.36	88.01	-	88.61	-	90.02	87.80
- () ^{22/}	13.04	13.10	12.64	11.99	-	11.39	-	9.98	12.20
- () ^{24/}	-	-	32.6	-	35.5 ^{23/}	32.7	-	29.2*	-
- () ^{24/}	49.7	-	25.5	-	-	23.0	-	20.2*	-
* = 11									
5/									
()	13,886	11,037	14,055	23,212	27,583	21,920	18,302	18,677	20,483
-	7,060	3,829	3,422	2,068	2,040	2,249	3,421	2,875	2,667
-	424	771	1,775	2,026	2,602	3,221	3,089	2,059	1,937
-	462	590	490	373	389	735	704	673	1,187
- 1166/	5,940	5,847	8,368	18,745	22,552	15,682	11,026	12,984	14,599
-	-	-	-	-	-	33	62	86	93
25/									
(. /)	-	-	3.0	-	-	2.8	-	-	-
-	-	-	1.1	-	-	1.1	-	-	-
-	-	-	2.9	-	-	2.7	-	-	-
-	-	-	1.4	-	-	1.4	-	-	-
-	-	-	1.9	-	-	1.9	-	-	-
-	-	-	1.0	-	-	0.8	-	-	-
- Internet () ^{26/}	1.5	2.3	3.5	4.8	6.0	7.0	7.1	8.5	9.3
4.									
27/									
()	13.24	17.77	29.33	33.38	26.90	29.49	31.70	30.80	30.40
()	4,536	4,224	5,042	5,213	5,029	2,717	1,640	1,452	1,586
()	34	21	15	10	9	10	0	0	1

	2542	2543	2544	2545	2546	2547	2548	2549	2550
27/									
()	13.82	13.93	14.10	14.32	4.32	14.58	14.31	14.63	14.85
. ()	3.28	3.33	3.40	3.51	3.41	3.41	3.03	3.09	3.24
. ()	3.20	3.30	3.36	3.48	3.37	3.41	3.03	3.09	3.24
() ^{30/}	1.60	1.60	1.68	1.78	1.80	1.81	1.81	1.83	1.80
(/) ^{28/}	2.4	2.3	2.5	2.6	2.7	2.8	ไม่มีการจัดเก็บข้อมูล	ไม่มีการจัดเก็บข้อมูล	ไม่มีการจัดเก็บข้อมูล
- 10 (24) . / . .	60.6	56.1	40.5	49.4	54.5	59.8	40.6	43.3	50.0
() ^{29/}									

1/ 7/

2/

3/

. . 2533-2563

. . 2543-2573

(21 . 2551)

4/

5/ 25/

6/ GDP

9/ 10/

11/ . 2543-2573

12/

13/ (31 . 50)

14/ (2543-2545)

(2546-2549)

15/ () 2542-2549

16/

17/

18/

19/20/

21/

22/ . 2547

()

23/ . 2546

24/ . 2544 . 2547

(* 2549)

25/ . 2544 2547

26/ (2542-2545) () . 2546-2550

27/ (20 . 50

)

28/

29/ (9 . 50)

30/

1. (2551). _____ ; _____.
2. (2550). _____ . http://www.pcd.go.th/info_serv/air_dust.htm
3. (2550). _____ .2539- _____ . <http://www.aqnis.pcd.go.th>
4. (2551). _____ . www.pcd.go.th.
5. (2551). _____ . www.pcd.go.th.
6. " _____ " (24 2551)
7. (2549). _____ 2549 . www.bma.go.th/anmd.
8. " _____ " (22 2551)
9. (Youth Net). (2551). _____
_____ 2550.
10. (2551). _____ ; _____.
11. " _____ 5 _____ " (26 2551)
12. " _____ " (25 2551).
13. _____ 31 .2551.
14. " _____ 2 _____ " (8 2551).
15. (2551). _____ "

16. _____ 36% _____ (12 2551).
17. " _____ " (20 2551).
18. (2551). _____.
19. (2551). _____ (21 2551).
20. (2551). _____ (4 2551).
21. (2551). _____ 13-24 _____

22. 50 (2550). _____ (Child Watch).
23. (2551). _____ 2551 : _____.
24. (2551). _____ 2551 : _____ . 2549.
25. (2549). _____ . www.tei.or.th.
26. " _____ " (24 2551).
27. " _____ " (22 2551).
28. (2551). _____ 2551.
29. (2551). _____ 2551.
30. (2544, 2550). _____.
31. (2549 - 2551). _____.
32. (2550). _____ (2550).
33. (2551). _____ 2550.
34. (2550). _____ 2550.
35. (2551) _____ (2551).
36. _____ ; _____
2 . 2549 38 27 : 13 . 2550.
37. (2550). _____ . www.moph.go.th.