



สต็อกทุนของประเทศไทย

ฉบับ พ.ศ. ๒๕๖๖

CAPITAL STOCK OF THAILAND

2023 EDITION

สำนักงานสภาพัฒนาการเศรษฐกิจและสังคมแห่งชาติ
Office of the National Economic and Social Development Council

www.nesdc.go.th

Preface

The Capital Stock of Thailand 2023 edition is a crucial dataset compiled annually by the Office of the National Economic and Social Development Council (NESDC) to evaluate Thailand's capital factors, examine the relationship between production factors and outputs, and analyze the production function.

The Office of the National Economic and Social Development Council (NESDC) updates and revises data based on the latest gross fixed capital formation statistics reported in the national income accounts. This ensures the accuracy and relevance of the data, which serve as a foundation for analysis, research, and the efficient determination of Thailand's investment frameworks and policies.

On this occasion, we would like to extend our sincere gratitude to all stakeholders, including agencies and individuals from the public and private sectors, for their invaluable support in providing data, as well as their insightful opinions and recommendations, which have significantly contributed to the compilation of Thailand's capital stock account. We sincerely look forward to your continued cooperation in the future.



(Danucha Pichayanan)

Secretary-General

National Economic and Social Development Council

Revision

The Capital Stock of Thailand 2023 Edition

The Capital Stock of Thailand 2023 edition compilation has been revised back to 2020 to improve accuracy. The major revisions include the following topics.

1. Revise the capital stock data to be consistent with the gross fixed capital formation published in the National Income of Thailand 2022 edition and Gross Domestic Product of Thailand for Q2/2024.
2. Revise the indicators in accordance with the most recent data available from the original sources.
3. In this publication, the growth rate was measured based on the gross domestic product using chain-linked volume measures, as reported in the National Income of Thailand 2023 edition and the Gross Domestic Product of Thailand for Q2/2024.
4. Two letters are assigned to the tables: r and p. the letter “r” denotes previously published data that has been revised to reflect more complete and accurate information. The letter “p” indicates to preliminary annual figures.

****Any reproduction of data and materials in this publication must cite the NESDC as the source.****

Contents

	หน้า
Executive Summary	Vii
Capital Stock of Thailand in 2023	22
1. Overview	22
2. Classification	23
2.1 Classification by institutional sector	23
2.2 Classification by the kind of activities	27
3. Depreciation	33
4. Capital Factor Analysis	34
4.1 Incremental Capital Output Ratio: ICOR	34
4.2 Capital Productivity : CP	36
4.3 Total Factor Productivity: TFP	38
Annex	
Concept, definitions, and methodology of Capital Stock of Thailand	
Statistical Tables	

List of Tables

		หน้า
Table 1	Value, Structure and Growth Rate of Net Capital Stock	25
Table 2	Value of Net Capital Stock at Replacement Cost by Economic Activities	29
Table 3	Incremental Capital Output Ratio (ICOR)	34
Table 4	ICOR Classified by the National Economic and Social Development Plans	35
Table 5	Capital Productivity (CP)	36
Table 6	Capital Productivity Classified by the National Economic and Social Development Plans	37
Table 7	Growth Rate of GDP and Sources of Growth	38
Table 8	Growth Rate of GDP and Sources of Growth in the Agricultural Sector	40
Table 9	Growth Rate of GDP and Sources of Growth in the Industrial Sector	41
Table 10	Growth Rate of GDP and Sources of Growth in the Service Sector.	42

List of Figures

		หน้า
Figure 1	Value of Net Capital Stock and GDP at current prices	22
Figure 2	Growth rates of net capital stock and GDP at CVM	23
Figure 3	Value and Growth Rate of Public Sector Net Capital Stock	26
Figure 4	Value and Growth Rate of Private Sector Net Capital Stock	26
Figure 5	Structure of Net Capital Stock in 2023	28
Figure 6	Growth Rate of Net Capital Stock by the Kind of Activities and Institutional Sector	30
Figure 7	Value and Growth rate of Annual Depreciation by production side	33
Figure 8	ICOR Classified by the National Economic and Social Development Plans	35
Figure 9	Capital Productivity Classified by the National Economic and Social Development Plans	37
Figure 10	Sources of GDP Growth Classified by the National Economic and Social Development Plans	39
Figure 11	Sources of GDP Growth in the Agriculture sector Classified by the National Economic and Social Development Plans	40
Figure 12	Sources of Growth in the Industrial sector Classified by the National Economic and Social Development Plans	41
Figure 13	Sources of Growth in the Service sector Classified by the National Economic and Social Development Plans	42

EXECUTIVE SUMMARY



Executive Summary Capital Stock of Thailand in 2023

Overview

1. Gross Capital Stock

Gross capital stock at replacement cost in 2023 was 67,928,188 million baht, reflecting an increase of 1,904,140 million baht compared to 2022. This expansion was primarily driven by private sector, contributing 1,480,340 million baht, alongside the public sector, which accounted for 423,800 million baht. In real terms, gross capital stock increased in the agricultural sector, while the non-agricultural sector experienced a deceleration in expansion. Among the non-agricultural sectors, the service sector recorded the highest level of gross capital stock, particularly in transportation and storage, real estate activities, and accommodation and food service activities. The industrial sector demonstrated steady growth.

2. Net Capital Stock

Net capital stock at replacement cost in 2023 valued at 40,754,563 million baht, representing an increase of 729,041 million baht compared to 2022. When compared to GDP at current prices, which amounted to 17,922,038 million baht in 2023, net capital stock at replacement cost was approximately 2.3 times greater than GDP.

2.1 Net Capital Stock classified by institutions

The private sector owned the majority, accounting for 69.9% of the total net capital stock, while the remainder of 30.1% held by the public sector.

2.2 Net Capital Stock classified by economic activities

1) **Agricultural sector:** Net capital stock at replacement cost in 2023 was recorded at 3,204,634 million baht. In terms of chain volume measures, net capital stock increased by 1.5%, compared to 1.4% in 2022.

2) **Non-agricultural sector:** Net capital stock at replacement cost in 2023 was recorded at 37,549,929 million baht. In real terms, it increased by 0.5%, similar to the previous year. Details of the industrial and service sectors within the non-agricultural sector are as follows.

- **Industrial sector:** Net capital stock grew by 0.9%, an accelerated increase compared to 2022. Overall, there were expansions in mining and quarrying; manufacturing; and electricity, gas, steam and air conditioning supply, with the exception of assets related to water supply, sewerage, waste management, and remediation activities.

- **Service sector:** Net capital stock increased by 0.3%, decelerated from 0.7% in 2022. This resulted from growth in all activities except construction, and real estate activities, which aligned with a reduction in building construction in 2023.

Table 1 Value, Structure and Growth Rate of Gross Capital Stock and Net Capital Stock

Unit – Million Bath

	2018	2019	2020	2021	2022	2023p
1. Value of Gross Capital Stock at Replacement Cost	61,093,308	62,175,822	61,511,705	63,461,876	66,024,047	67,928,188
2. Growth Rate of Gross Capital Stock at CVM (%)	2.9	1.4	-1.1	2.3	1.9	1.6
• Public	1.6	-0.5	2.4	2.5	0.5	0.9
• Private	3.4	2.3	-2.6	2.2	2.5	2.0
3. Value of Net Capital Stock at Replacement Cost	38,265,876	38,816,290	38,462,472	38,983,277	40,025,522	40,754,563
• Public	11,334,293	11,322,629	11,634,173	11,912,876	12,117,619	12,257,952
• Private	26,931,583	27,493,660	26,828,299	27,070,401	27,907,903	28,496,611
4. Growth Rate of Net Capital Stock at CVM (%)	3.1	1.3	-0.9	0.6	0.6	0.6
• Public	0.7	-0.5	2.4	1.7	-0.5	-0.1
• Private	4.1	2.1	-2.3	0.1	1.1	0.9

3. Capital factor sector analysis and sources of economic growth in 2022

3.1 Incremental Capital Output Ratio: ICOR¹

Overview

In 2023, Thai economy continued to grow, and gross capital formation increased, supported by factors such as a rise in the number of tourists and an increase in domestic spending. This year ICOR was valued at 0.76, implying that a one-unit increase in value-added require 076 units of additional capital. The following details present ICOR, classified by economic activities:

Agriculture sector: In 2023, ICOR of the agriculture sector was 2.65, implying that a one-unit increase in GDP required 2.65 units of capital. Capital usage was less efficient than in the previous year, as ICOR was recorded at 1.97 units.

Industrial sector: In 2023, ICOR of the manufacturing sector was -0.77. The negative result indicated an inconsistency in the trend of changes between capital stock and gross domestic product. This was partly due to inefficiencies in capital usage,

¹ $ICOR = \frac{\Delta NK_t}{\Delta GDP_t}$

as reflected in the capital utilization rate, which was recorded at 59.61 in 2023 compared to 63.60 in 2022.

Service sector: In 2023, ICOR of the service sector was 0.20, meaning that 0.20 units of capital were required for an additional unit of GDP. This reflected more efficient use of capital compared to 2022 when ICOR was recorded at 0.53. This improvement was due to an increase in the number of foreign tourists, and the Thai government's policies supporting the tourism industries.

3.2 Capital Productivity: CP²

Overview

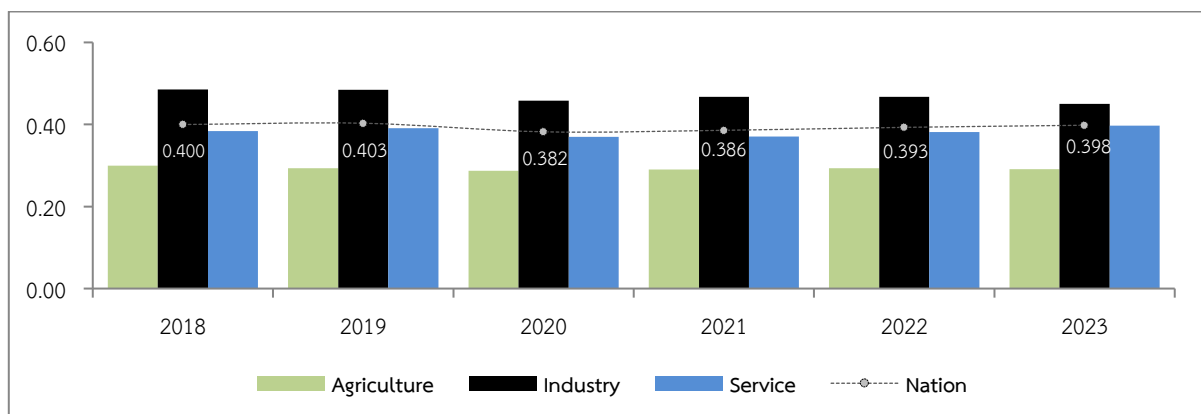
Capital productivity in 2023 was 0.40, which indicated that each unit of capital was used to produce 0.40 units of GDP, an increase compared to 0.39 in 2022. This indicates that capital efficiency in 2023 was better than in 2022. A detailed discussion of capital productivity, classified by economic activities, is provided below.

Agricultural sector: In 2023, capital productivity of agricultural sector was 0.29, implying that one unit of capital produced 0.29 units of agricultural value-added. However, this sector demonstrated the lowest efficiency compared to other sectors.

Industrial sector: In 2023, capital productivity of the industrial sector was 0.45, marginally lower than 0.47 recorded in 2022. Despite this slight decline, the industrial sector outperformed other sectors in capital productivity.

Service sector: In 2023, capital productivity of the service sector was 0.40, a slight increase from 0.38 recorded in 2022. This figure was equal to the national average for capital productivity.

Figure 1 Capital Productivity of Thailand, 2018 - 2023



$$^2CP = \frac{GDP}{\text{Net Capital Stock}}$$

3.3 Total Factor Productivity: TFP

Overall, Thai economy expanded by 1.9% in 2023, decelerated from 2.5% in 2022. The sources of growth were driven by a 0.85% increase in TFP, 0.37% in capital factor, and 0.67% in labor factor. The primary contributor to this year's growth was the expansion of service sector, particularly in tourism industry, with increases in both domestic and international tourists. Details of Total Factor Productivity, classified by economic activities, are shown below.

Agricultural sector: In 2023, agricultural sector grew by 2.0%, decelerated from 2.5% in the previous year. Considering the Agricultural sector's sources of growth, this slowdown was attributed to TFP and labor factor, which contributed increases of 0.77% and 0.03%, respectively.

Industrial sector: In 2023, industrial sector contracted by 2.4%, compared to a 0.1% increase in 2022. Considering the source of growth, this decrease was primarily attributed to a 3.47% drop in TFP, while labor factor and capital factor increased by 0.45%, and 0.61%, respectively.

Service sector: In 2023, the service sector rose by 4.3%, accelerated from 3.8% in 2022. Considering the source of growth, TFP and labor factor continually increased by 2.81%, and 1.26%, respectively, while capital factor increased at a deceleration rate of 0.19%,

Table 2 Capital factor analysis and sources of economic growth in 2023

	ICOR*	CP**	GDP Growth	Source of growth			
				Labor	Land	Capital	TFP***
Overall	0.76	0.40	1.9	0.67	-0.00	0.37	0.85
● Agriculture	2.65	0.29	2.0	0.03	-0.02	1.21	0.77
● Industrial	-0.77	0.45	-2.4	0.45	-	0.61	-3.47
● Services and others	0.20	0.40	4.3	1.26	-	0.19	2.81

*Incremental Capital Output Ratio: ICOR

**Capital Productivity: CP

***Total Factor Productivity: TFP

Summary of Thailand's capital stock

	2018	2019	2020	2021	2022	2023p
1. Growth rate of GDP (%)	4.2	2.1	-6.1	1.6	2.5	1.9
2. Net capital stock at replacement cost (Million Bath)	38,265,876	38,816,290	38,462,472	38,983,277	40,025,522	40,754,563
• Public	11,334,293	11,322,629	11,634,173	11,912,876	12,117,619	12,257,952
• Private	26,931,583	27,493,660	26,828,299	27,070,401	27,907,903	28,496,611
3. Growth rate of Net Capital Stock at CVM (%)	3.1	1.3	-0.9	0.6	0.6	0.6
• Public	0.7	-0.5	2.4	1.7	-0.5	-0.1
• Private	4.1	2.1	-2.3	0.1	1.1	0.9
4. Structure of Net Capital Stock (%)						
• Public	29.6	29.2	30.2	30.6	30.3	30.1
• Private	70.4	70.8	69.8	69.4	69.7	69.9
5. Net Capital Stock at Replacement Cost (Million Bath)						
• Agriculture	2,974,634	3,033,192	2,947,371	2,998,263	3,112,841	3,204,634
• Industrial	10,335,662	10,422,230	10,410,381	10,655,147	10,865,503	11,064,919
• Services and others	24,955,580	25,360,868	25,104,720	25,329,868	26,047,178	26,485,010
6. Growth Rate of Net Capital Stock at CVM (%)						
• Agriculture	3.1	1.0	-1.2	1.4	1.4	1.5
• Industrial	4.0	0.0	-0.2	1.7	0.0	0.9
• Services and others	2.7	1.9	-1.1	0.1	0.7	0.3
7. Incremental Capital Output Ratio: ICOR	1.86	1.57	0.38	1.02	0.63	0.76
8. Capital Productivity: CP	0.40	0.40	0.38	0.39	0.39	0.40
• Agriculture	0.30	0.29	0.29	0.29	0.29	0.29
• Industrial	0.49	0.48	0.46	0.47	0.47	0.45
• Services and others	0.38	0.39	0.37	0.37	0.38	0.40
9. Total Factor Productivity: TFP						
• Agriculture	3.14	-1.78	-2.32	1.30	1.30	0.77
• Industrial	-0.47	0.07	-5.03	2.49	-0.30	-3.47
• Services and others	3.20	2.37	-6.17	-0.57	2.17	2.81
• Overall	1.83	1.19	-5.43	0.70	1.42	0.85

Source: National Accounts Division, Office of the National Economic and Social Development Council

CAPITAL STOCK OF THAILAND
2023 EDITION

CAPITAL STOCK OF THAILAND IN 2023

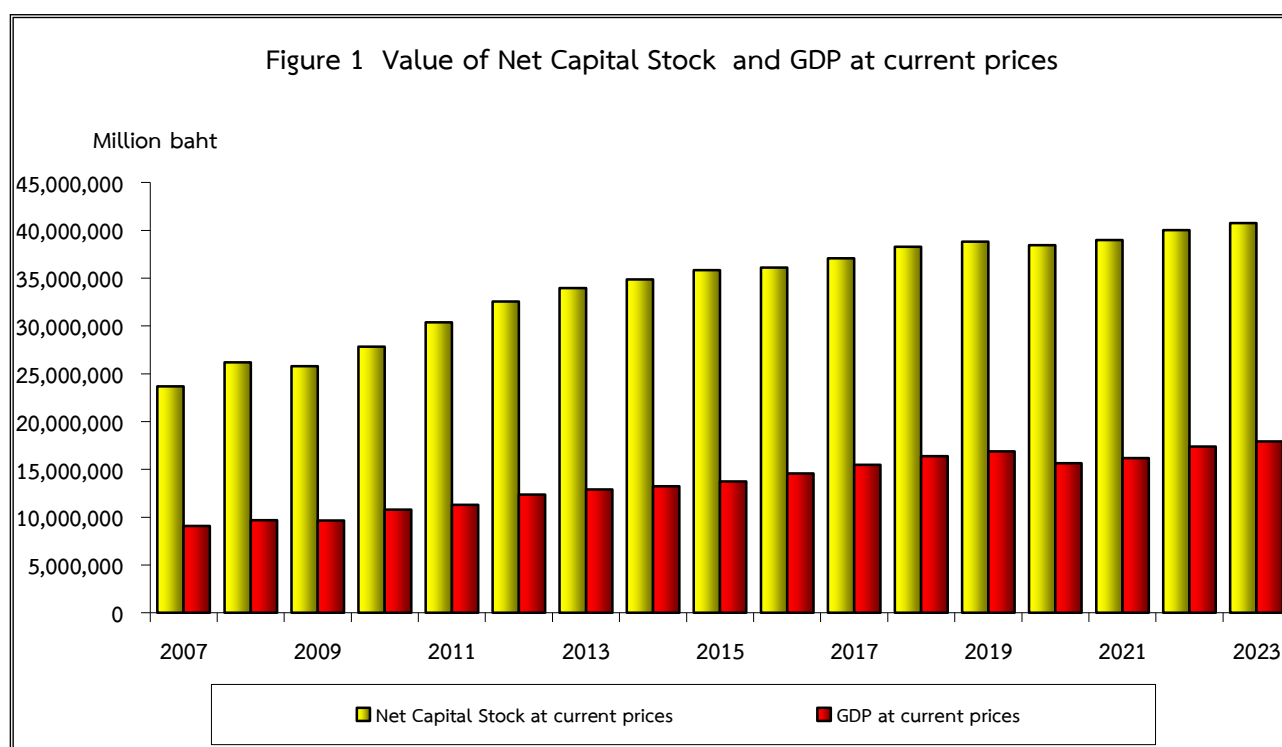
1. Overview

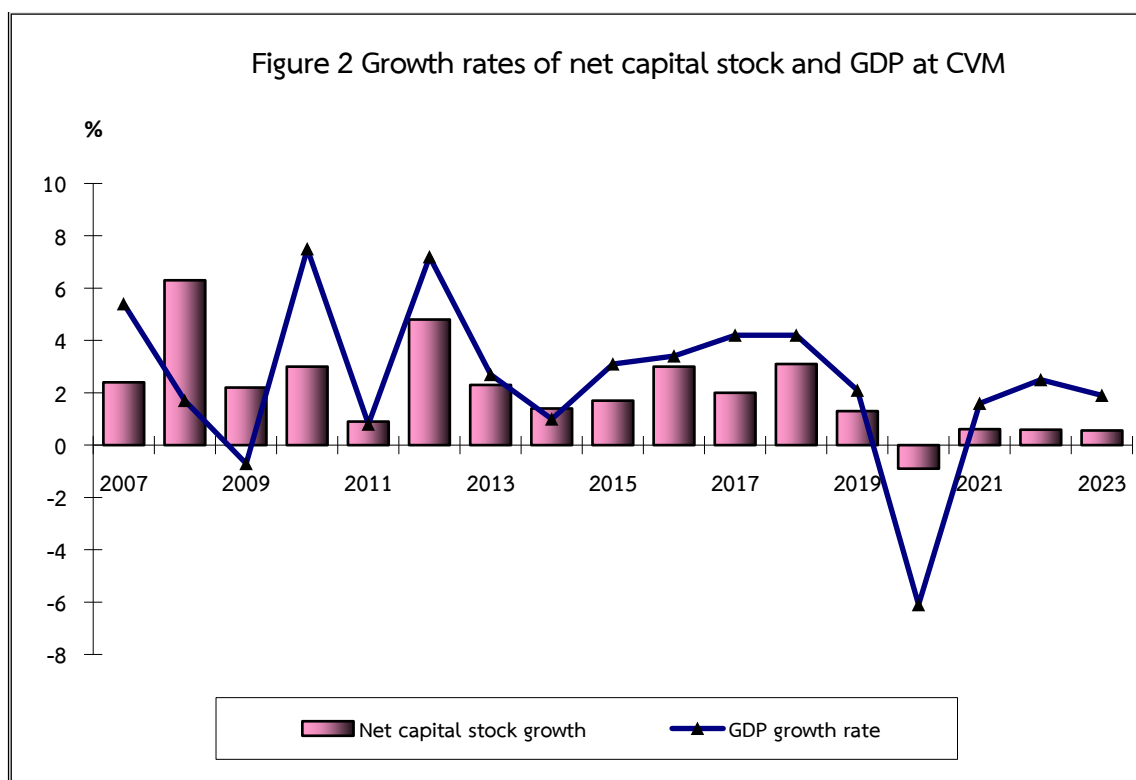
1.1 Gross Capital Stock

Gross capital stock at current replacement cost in 2023 was 67,928,188 million baht, increased by 1,904,140 million baht from 2022. This expansion was primarily driven by private sector, contributing 1,480,340 million baht, alongside the public sector, which accounted for 423,800 million baht. In real terms, gross capital stock increased in the agricultural sector, while the non-agricultural sector experienced a deceleration in expansion. Among the non-agricultural sectors, the service sector recorded the highest level of gross capital stock, particularly in transportation and storage, real estate activities, and accommodation and food service activities. The industrial sector demonstrated steady growth.

1.2 Net Capital Stock

Net capital stock at replacement cost was 40,754,563 million baht in 2023, increased from the previous year by 729,041 million baht. With GDP at current prices totaling 17,922,038 million baht, the net capital stock was approximately 2.3 times the size of GDP.





2. Classification

Net capital stock is classified institutional sector and by the kind of activities. The details are as follows:

2.1 Classification by institutional sector comprises net capital stock held by public sector and private sector.

2.1.1 Public sector

Overview

Gross capital stock at replacement cost in the public sector in 2023 reached 20,610,579 million baht, indicating an increase of 423,800 million baht compared to the previous year. After deducting the accumulated consumption of fixed capital, the net capital stock of public sector amounted to 12,257,952 million baht. In real terms, net capital stock in the public sector decreased by 0.1%, compared to a 0.5% decrease in 2022. This trend was primarily driven by a reduction in accumulated capital stock in real estate activities; accommodation and food service activities; water supply, sewerage; waste management and remediation activities; and financial and insurance activities.

Structure of public sector net capital stock

The public sector's net capital stock accounted for 30.1% of the total net capital stock. It was categorized by production activities as follows:

1) Agriculture: In 2023, the public sector's net capital stock in agriculture was valued at 1,576,680 million baht, constituting 12.9% of the total public net capital stock. In real terms, net capital stock increased by 0.1%, a marginal increase from 0.0%. A significant portion of these assets consisted of irrigation systems.

2) Industrial sector: In the same year, the public sector's net capital stock in the industrial sector amounted to 2,543,881 million baht, representing 20.8% of the total public net capital stock. In real terms, net capital stock decreased by 0.3%, an improvement compared to the previous decrease of 1.2%. The majority of these assets were in electricity, gas, steam, and air conditioning supply, totaling 2,004,063 million baht.

3) Service sector: In 2023, the public sector's net capital stock in the service sector reached 8,137,391 million baht, accounting for 66.4% of the total public net capital stock. In real terms, net capital stock decreased by 0.1, compared to a 0.4% decrease in 2022. A significant portion of these assets was allocated to transportation and storage, amounting to 4,036,281 million baht, primarily supporting infrastructure investments such as roads, railways, and airports.

2.1.2 Private sector

Overview

In 2023, the total value of private sector gross capital stock at current replacement cost was 47,317,609 million baht, marking an increase of 1,480,340 million baht from the previous year. After deducting the accumulated consumption of fixed capital, the net capital stock stood at 28,496,611 million baht. In real terms, this represented a growth of 0.9%, slightly slower than the 1.1% growth recorded in the preceding year.

Structure of private sector net capital stock

Net capital stock held by the private sector at current replacement cost comprised 69.9% of the total net capital stock. This net capital stock was classified by production sectors as follows:

1) Agriculture sector: In 2023, the private sector's net capital stock at replacement cost stood at 1,627,954 million baht, accounting for 5.7% of the total private net capital stock. In real terms, private net capital stock increased by 3.0%, a slight rise from 2.9% in the previous year. Most assets were related to agricultural machinery, working animals, and breeding livestock.

2) Industrial sector: At the current replacement cost, the private sector held assets valued at 8,521,037 million baht, accounting for 29.9% of the total private net capital stock. In real terms, the private net capital stock increased by 1.2%, accelerated from 0.4% in 2022. Manufacturing dominated the sector, with assets valued at 6,885,225 million baht, primarily in food products; coke and refined petroleum; and computer, electronic and optical products.

3) Service sector: The private sector predominantly held the net capital stock at replacement cost in the service sector, which was valued at 18,347,619 million baht, constituting 64.4% of the total private net capital stock. In real terms, the private net capital stock increased by 0.5%, down from 1.3% in 2022. The largest assets were in real estate activities, amounting to 6,946,610 million baht, followed by transportation and storage; and wholesale and retail trade, with values of 3,586,535 million baht and 2,750,433 million baht, respectively.

Table 1 Value, Structure and Growth Rate of Net Capital Stock

Unit – Million Baht

	2018	2019	2020	2021	2022	2023
Value of Gross Capital Stock at Current Replacement Cost	61,093,308	62,175,822	61,511,705	63,461,876	66,024,047	67,928,188
Growth Rate of Gross Capital Stock at CVM (%)	2.9	1.4	-1.1	2.3	1.9	1.6
Public	1.6	-0.5	2.4	2.5	0.5	0.9
Private	3.4	2.3	-2.6	2.2	2.5	2.0
Value of Net Capital Stock at Current Replacement Cost	38,265,876	38,816,290	38,462,472	38,983,277	40,025,522	40,754,563
Public	11,334,293	11,322,629	11,634,173	11,912,876	12,117,619	12,257,952
Private	26,931,583	27,493,660	26,828,299	27,070,401	27,907,903	28,496,611
Structure of Net Capital Stock at replacement cost (%)	100.0	100.0	100.0	100.0	100.0	100
Public	29.6	29.2	30.2	30.6	30.3	30.1
Private	70.4	70.8	69.8	69.4	69.7	69.9
Growth Rate of Net Capital Stock at CVM (%)	3.1	1.3	-0.9	0.61	0.59	0.56
Public	0.7	-0.5	2.4	1.7	-0.5	-0.1
Private	4.1	2.1	-2.3	0.1	1.1	0.9

Figure 3 Value and Growth Rate of Public Sector Net Capital Stock

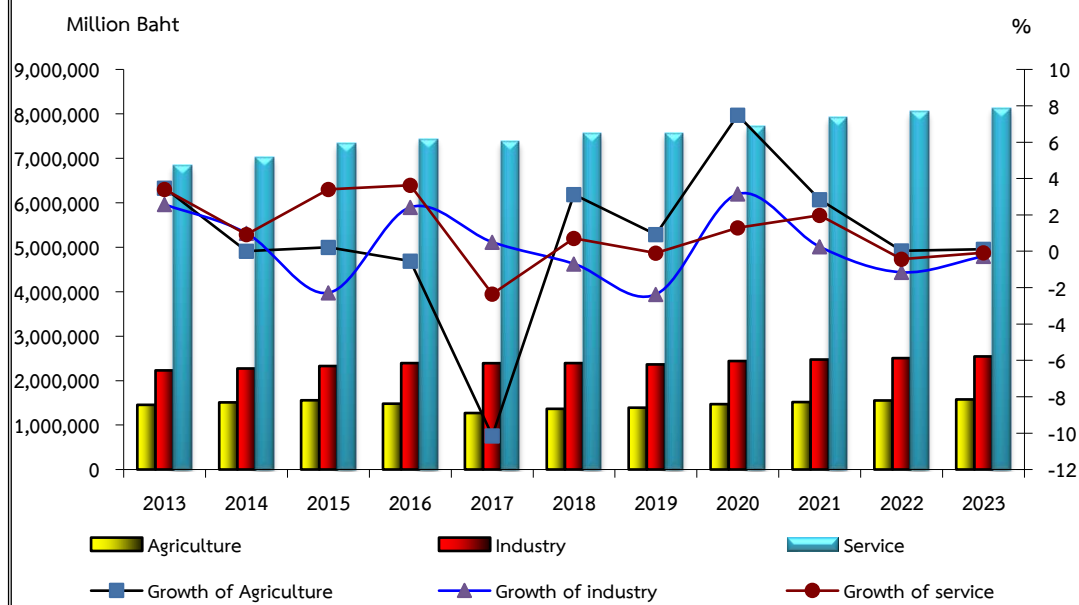
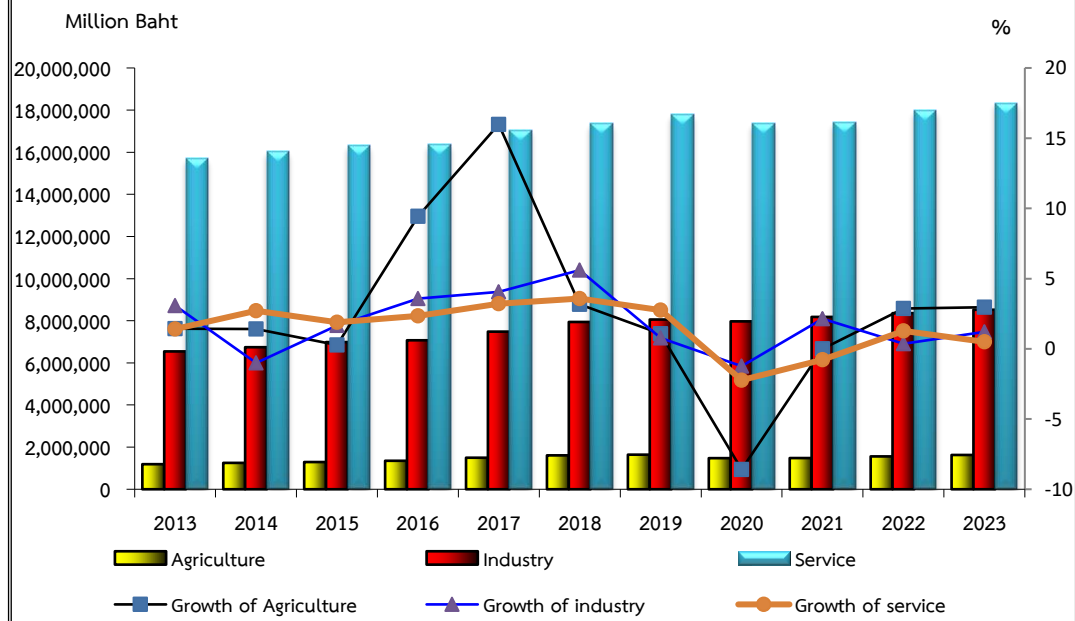


Figure 4 Value and Growth Rate of Private Sector Net Capital Stock



2.2 Classification by the kind of activities

2.2.1 Capital stock by the kind of activities

Gross capital stock can be classified into 19 production sectors, including: (1) agriculture, forestry and fishing (2) mining and quarrying (3) manufacturing (4) electricity, gas, steam and air conditioning supply (5) water supply; sewerage, waste management and remediation activities (6) construction (7) wholesale and retail trade; repair of motor vehicles and motorcycles (8) transportation and storage (9) accommodation and food service activities (10) information and communication (11) financial and insurance activities (12) real estate activities (13) professional, scientific and technical activities (14) administrative and support service activities (15) public administration and defence; compulsory social security (16) education (17) human health and social work activities (18) arts, entertainment and recreation (19) other service activities and

Gross capital stock at current replacement cost in 2023 was recorded at a value of 67,928,188 million baht. When categorized by different type of activities, transport and storage stood out as the sector with the highest capital stock a value, totaling 12,721,099 million baht. This was followed by manufacturing, with a capital stock of 12,222,183 million baht. Agriculture, forestry, and fishing recorded a value of 5,436,349 million baht, while electricity, gas, steam, and air conditioning supply accounted for 5,363,975 million baht. Wholesale and retail trade; repair of motor vehicles and motorcycles recorded a value of 4,989,858 million baht. Human health and social work activities recorded a value of 2,772,432 million baht. Accommodation and food service activities recorded a value of 2,079,698 million baht. Construction recorded a value of 2,075,435 million baht. Information and communication recorded a value of 1,553,085 million baht. Other service activities recorded a value of 1,447,105 million baht. Education recorded a value of 1,393,575 million baht. Public administration and defence; compulsory social security recorded a value of 1,211,904 million baht. Mining and quarrying recorded a value of 1,014,007 million baht. Financial and insurance activities recorded a value of 999,534 million baht. Water supply; sewerage, waste management and remediation activities recorded a value of 514,026 million baht. Administrative and support service activities recorded a value of 55,006 million baht. Arts, entertainment and recreation recorded a value of 39,781 million baht. Professional, scientific and technical activities recorded a value of 37,349 million baht.

In real terms, gross capital stock for 2023 increased by 1.6%, marking a deceleration from 1.9% in 2022. This slowdown, when analyzed by production activities, was primarily attributable to the service sector, which expanded by 1.3%, decelerated from 1.8% in the previous year. For instance, the transportation and storage

sector grew by 2.8%, lower than 4.2% in 2022, while accommodation and food service activities rose by 5.1%, compared to 6.2% in the preceding year. Meanwhile, the industrial sector increased by 2.1%, maintaining the same growth rate as in the prior year.

2.2.2 Net capital stock by the kind of activities

In terms of net capital stock, the total value at current replacement cost for the year 2023 stood at 40,754,563 million baht. The transport and storage sector recorded the highest net capital stock value at 7,622,816 million baht, followed by real estate activities at 7,619,153 million baht. In contrast, professional, scientific, and technical activities had the lowest net capital stock, valued at 21,425 million baht.

In 2023, net capital stock in real terms increased by 0.6%, maintaining the same growth rate as in 2022. This growth was mainly attributable to multiple sectors, including agriculture, forestry, and fishing, which continued to grow at 1.5%, up from 1.4%. Manufacturing also contributed, increasing by 0.8%, rising from 0.3% in 2022. Additionally, accommodation and food service activities rose by 2.6%, though this marked a slowdown from 3.8% in 2022, while transportation and storage grew by 1.6%, decelerating from 2.7% compared to the previous year.

Figure 5 Structure of Net Capital Stock in 2023

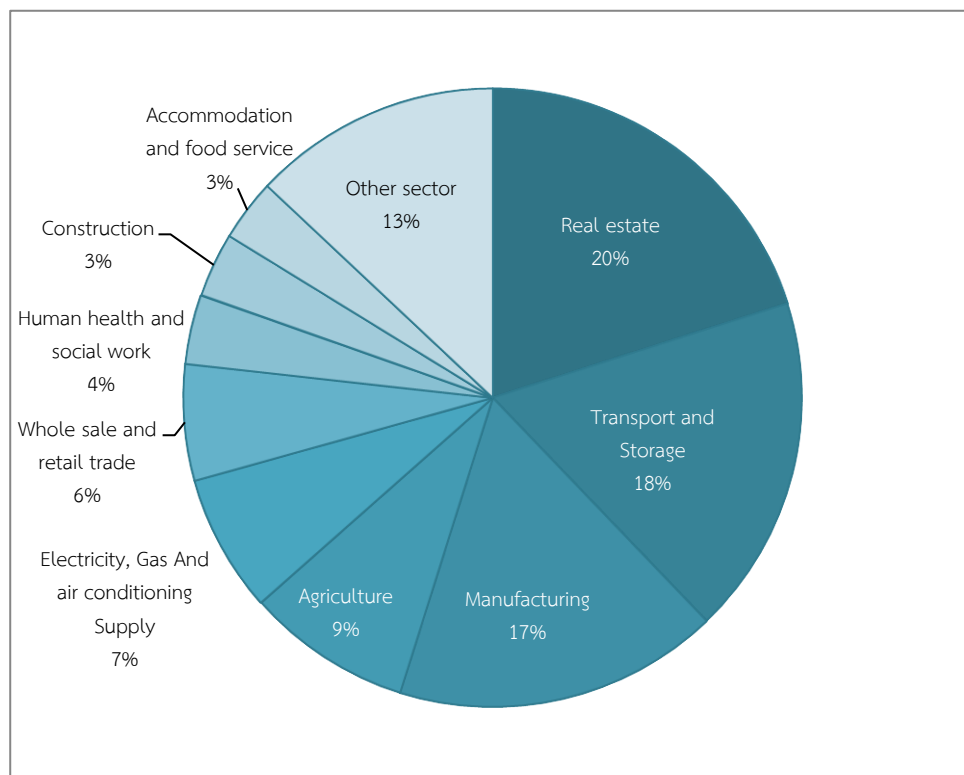
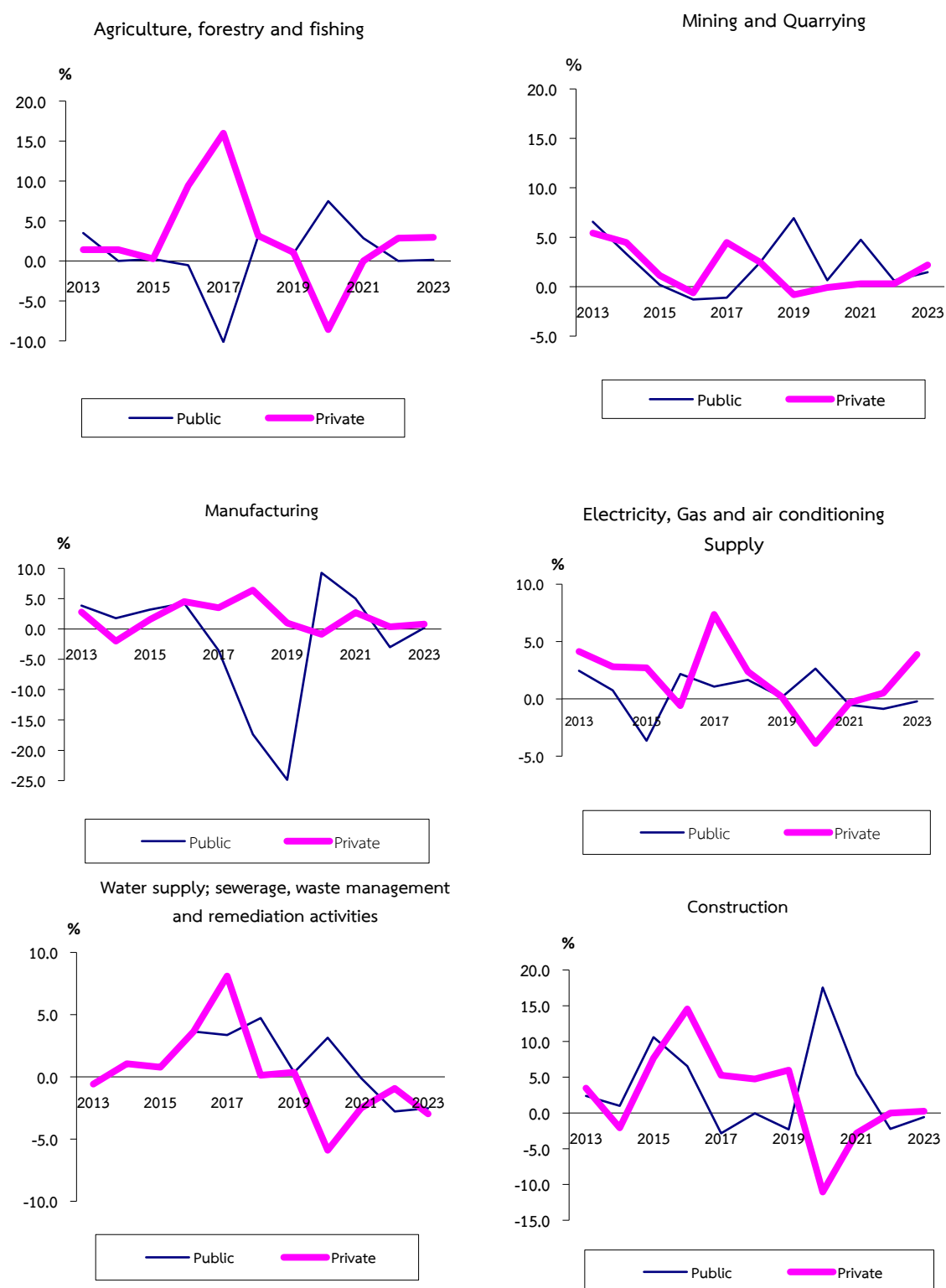


Table 2 Value of Net Capital Stock at Replacement Cost by Economic Activities

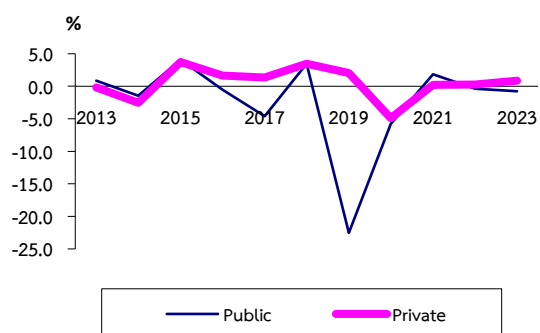
Unit – million Baht

Sectors	2018	2019r	2020	2021	2022	2023
Agriculture, forestry and fishing	2,974,634	3,033,192	2,947,371	2,998,263	3,112,841	3,204,634
Mining and Quarrying	651,304	656,145	659,297	667,324	674,546	689,582
Manufacturing	6,660,171	6,698,477	6,668,621	6,882,053	7,022,228	7,117,983
Electricity, Gas and air conditioning Supply	2,761,150	2,800,679	2,811,600	2,833,961	2,896,294	2,982,295
Water supply; sewerage, waste management and remediation activities	263,037	266,928	270,863	271,809	272,435	275,059
Construction	1,270,358	1,305,233	1,321,709	1,350,575	1,357,417	1,370,072
Wholesale and Retail Trade; Repair of Motor Vehicles, Motorcycles	2,678,410	2,710,935	2,626,159	2,665,535	2,723,794	2,767,759
Transport and Storage	7,305,826	7,273,137	7,127,001	7,065,596	7,436,993	7,622,816
Accommodation and food service activities	1,336,309	1,403,678	1,267,068	1,248,399	1,329,595	1,396,532
Information and communication	745,115	752,848	782,579	795,297	818,093	835,467
Financial and insurance activities	502,445	511,961	530,260	541,700	561,028	576,200
Real estate activities	7,228,129	7,347,506	7,355,980	7,487,509	7,570,477	7,619,153
Professional, scientific and technical activities	20,300	20,772	20,286	20,382	20,992	21,425
Administrative and support service activities	32,343	32,676	29,984	30,181	30,830	31,351
Public administration and defense; compulsory social security	601,584	615,187	630,011	646,296	656,431	665,906
Education	802,294	863,293	873,374	881,182	896,782	908,329
Human health and social work activities	1,497,157	1,542,088	1,608,183	1,658,635	1,689,459	1,704,947
Arts, entertainment and recreation	24,676	24,981	23,475	23,627	24,182	24,563
Other service activities	910,632	956,573	908,652	914,954	931,106	940,490
Total	38,265,876	38,816,290	38,462,472	38,983,277	40,025,522	40,754,563

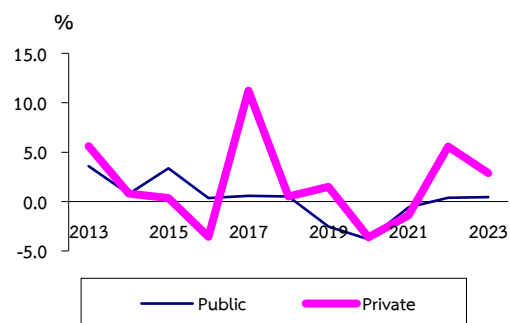
Figure 6 Growth Rate of Net Capital Stock by the Kind of Activities and Institutional Sector



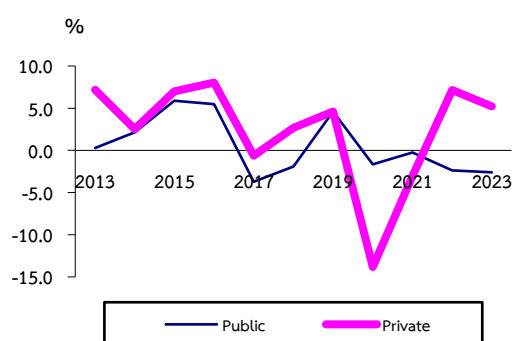
Wholesale and Retail Trade; Repair of
Motor Vehicles, Motorcycles



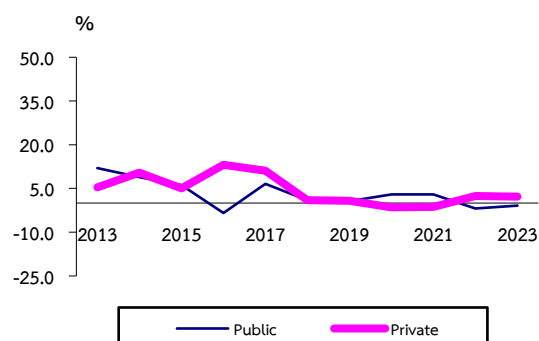
Transportation and storage



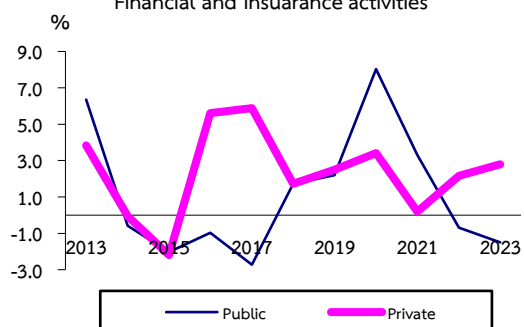
Accommodation and food service activities



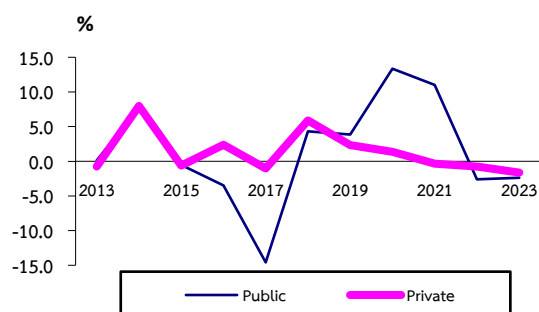
Information and communication



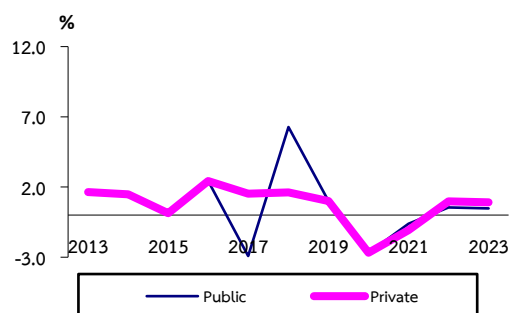
Financial and insurance activities



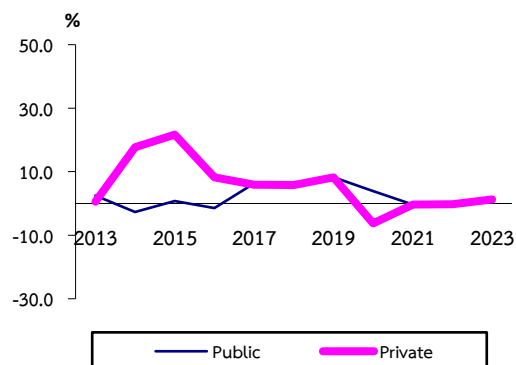
Real estate activities

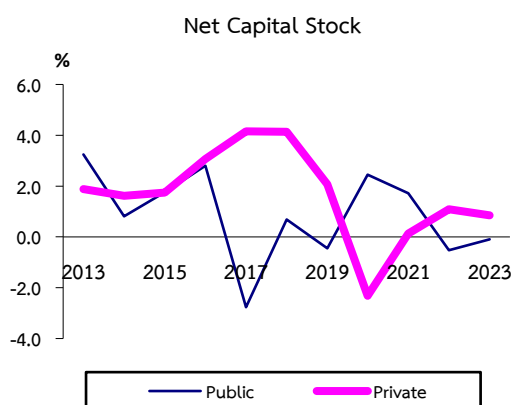
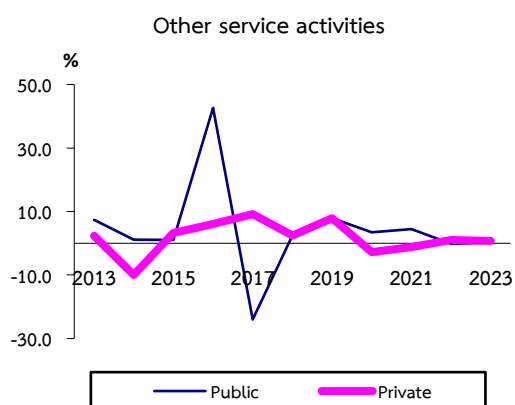
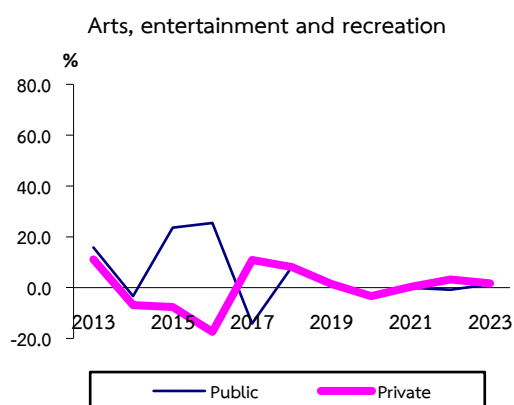
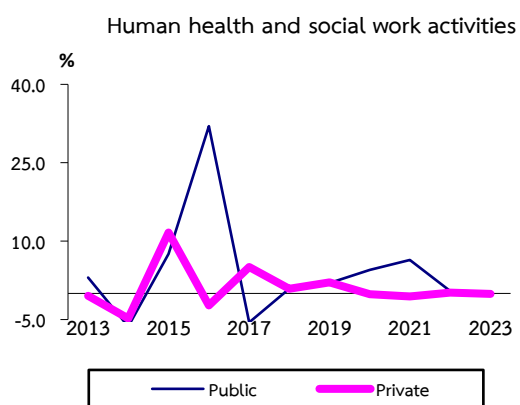
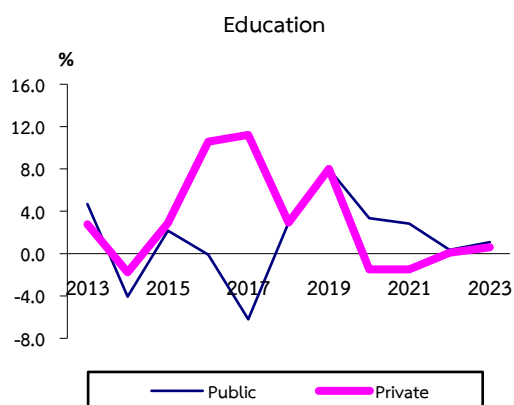
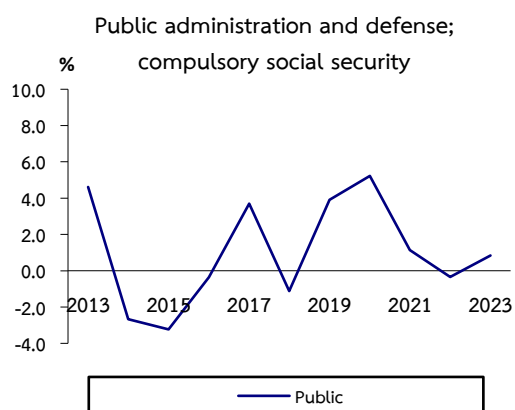


Professional, scientific and technical
activities



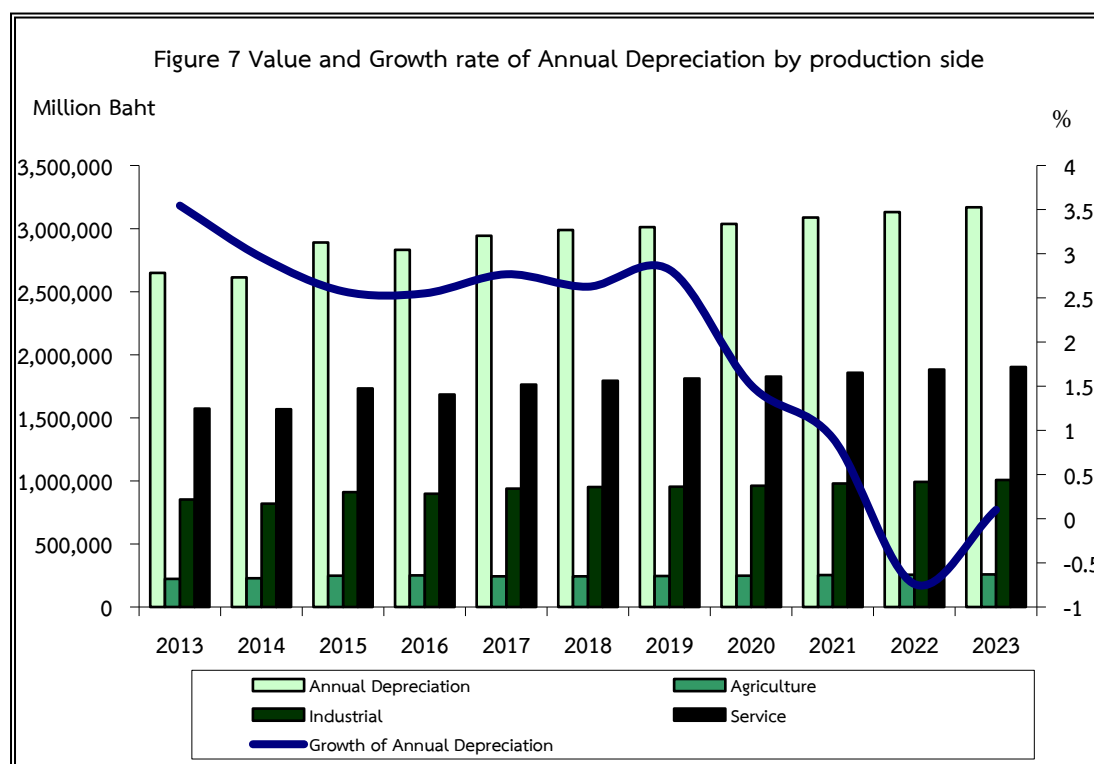
Administrative and support services





3. Depreciation

Annual depreciation at current replacement cost amounted to 3,168,244 million baht, which accounted for 4.7% of gross capital stock at replacement cost and 17.7% of gross domestic product. The transport and storage sector recorded the highest annual depreciation, valued at 588,919 million baht, representing 18.6% of total annual depreciation. Following this, manufacturing; electricity, gas, steam and air conditioning supply; and real estate activities ranked as the next three key contributors, with depreciation values of 573,631 million baht (18.1%), 347,811 million baht (11.0%), and 324,961 million baht (10.3%), respectively. On the other hand, professional, scientific and technical activities (2,363 million baht); arts, entertainment and recreation (2,440 million baht); and administrative and support service activities (4,546 million baht), recorded the lowest depreciation values, collectively contributing 0.3% to the total. In real terms, annual depreciation in 2023 grew marginally by 0.1%, compared to a 0.7% decline in 2022.



4. Capital Factor Analysis

4.1 Incremental Capital Output Ratio: ICOR

Overview

In 2023, Thailand's economy demonstrated consistent improvement. Investment increased during this year due to a rise in domestic expenditure and the number of travelers. ICOR was 0.76, meaning that a 1-unit expansion in GDP resulted from a 0.76-unit increase in the capital factor.

ICOR by Classified by Sectors

- **Agriculture sector:** In 2023, ICOR was 2.65. it indicated that a 1-unit expansion in GDP resulted from a 2.65-unit increase in the capital factor. This reflected lower efficiency compared to ICOR at 1.97 in 2022.
- **Industrial sector:** In 2023, ICOR was -0.77, indicating inefficient capital utilization. This highlights an inconsistency between the growth in net capital stock and changes in GDP within the industrial sector, aligning with the decreasing trend in 2023 at 59.61, compared to 63.60 in 2022.
- **Service sector:** In 2023, ICOR was 0.20, meaning that a 0.20-unit increase in the capital factor resulted in a 1-unit increase in GDP. This indicates higher efficiency compared to an ICOR of 0.53 in the previous year. This improvement in the service sector was attributable to an increase in foreign tourists, and government policies that boosted the travel industry.

Table 3 Incremental Capital Output Ratio (ICOR)

Sector	2017	2018	2019	2020	2021	2022	2023
Agriculture	1.70	1.77	-3.41	1.31	2.19	1.97	2.65
Non-Agriculture	1.19	1.88	1.37	0.34	0.92	0.54	0.63
● Industrial	3.01	2.86	-0.65	0.09	0.98	0.63	-0.77
● Service	0.78	1.54	1.32	0.46	0.52	0.53	0.20
Total	1.23	1.86	1.57	0.38	1.02	0.63	0.76

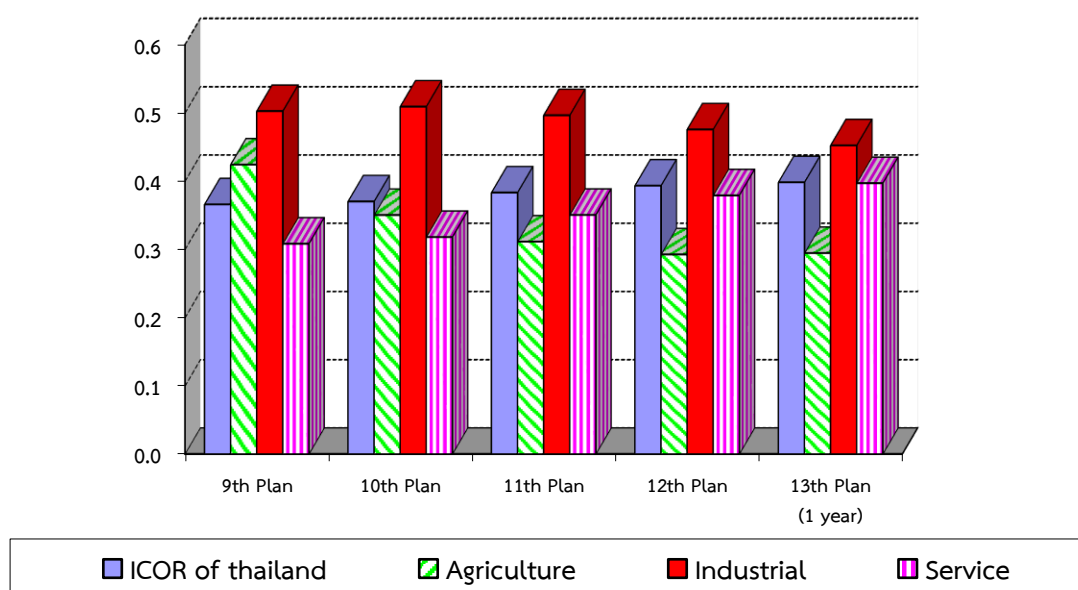
ICOR by production sectors classified according to the National Economic and Social Development Plan

The ICOR during the period of the 9th to 13th National Economic and Social Development Plans indicated that the agricultural sector began to utilize capital efficiently during the 12th Plan. However, the efficiency of capital utilization showed signs of a downward trend in the 13th Plan, while the agricultural sector had continued to grow steadily since the 11th Plan. On the other hand, the industrial sector exhibited inefficient capital utilization during the 11th Plan and the early years of the 13th Plan.

Table 4 ICOR Classified by the National Economic and Social Development Plans

Sector	9 th Plan (2002-2006)	10 th Plan (2007-2011)	11 th Plan (2012-2016)	12 th Plan (2017-2022)	13 th Plan (1 year) (2023-2027)
Agriculture	-21.28	-10.29	-0.29	0.92	2.65
Non-Agriculture	1.50	2.46	1.97	1.04	0.63
• Industrial	1.73	0.35	-0.54	1.15	-0.77
• Service	1.25	10.30	1.90	1.59	0.20
Total	1.64	1.18	2.27	1.11	0.76

Figure 8 ICOR Classified by the National Economic and Social Development Plans



4.2 Capital Productivity: CP

Overview

Capital productivity in 2023 was 0.40, an increase compared to 0.39 in 2022, which indicated that each unit of capital was used to produce 0.40 units of GDP

Capital Productivity Classified by Sectors

- **Agriculture sector:** In 2023, capital productivity of the agricultural sector was 0.29, remaining stable at this level for five consecutive years. Compared to other sectors, it recorded the lowest capital productivity.
- **Industrial sector:** capital productivity of the industrial sector in 2023 was 0.45, a slight decrease from 0.47 in 2022. In comparison to the national average, the industrial sector outperformed and had the highest capital productivity among all sectors. Additionally, after adjusting capacity utilization to reflect the total amount of capital, capital productivity was found to be 0.76, up from 0.73 in 2022.
- **Service sector:** capital productivity of the service sector was 0.40, increasing from 0.38 in 2022. In comparison to the national average, the service sector's capital productivity was equivalent to the national average.

Table 5 Capital Productivity (CP)

Sector	2018	2019	2020	2020	2021	2022	2023
Agriculture	0.29	0.30	0.29	0.29	0.29	0.29	0.29
Non-Agriculture	0.41	0.41	0.42	0.39	0.40	0.41	0.41
● Industrial	0.49	0.49	0.48	0.46	0.47	0.47	0.45
CAP U Adjusted*	0.72	0.71	0.74	0.76	0.73	0.73	0.76
● Service	0.38	0.38	0.39	0.37	0.37	0.38	0.40
Total	0.40	0.40	0.40	0.38	0.39	0.39	0.40
CAP U Adjusted*	0.43	0.44	0.44	0.43	0.43	0.44	0.45

*CAP U : Capital Utilizations

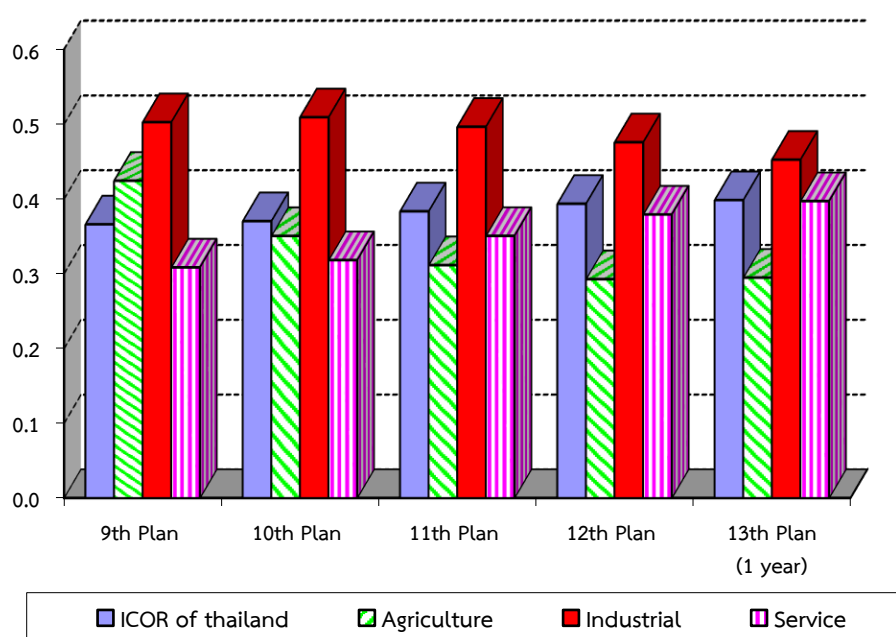
Capital Productivity by production sectors classified according to the National Economic and Social Development Plan

Capital productivity during the period of the 9th to 13th National Economic and Social Development Plans showed a consistent overall increase. This was primarily driven by the accelerated growth of the service sector, while the agricultural and industrial sectors experienced consecutive declines. Notably, the agricultural sector reported the lowest capital productivity, with a steady growth beginning in the 12th plan.

Table 6 Capital Productivity Classified by the National Economic and Social Development Plans

Sector	9 th Plan (2002-2006)	10 th Plan (2007-2011)	11 th Plan (2012-2016)	12 th Plan (2017-2022)	13 th Plan (1 year) (2023-2027)
Agriculture	0.42	0.35	0.31	0.29	0.29
Non-Agriculture	0.36	0.37	0.39	0.41	0.41
• Industrial	0.50	0.51	0.50	0.48	0.45
• Service	0.31	0.32	0.35	0.38	0.40
Total	0.37	0.37	0.38	0.39	0.40

Figure 9 Capital Productivity Classified by the National Economic and Social Development Plans



4.3 Total Factor Productivity: TFP

TFP is a key indicator that reflects efficiency and value-added in production that is not caused by an increase in any single factor of production (labor, land, or capital). It results from improvements in technology, innovation, and administration. An increase in TFP indicates a rise in overall output and reflects an enhancement in Thailand's overall competitiveness.

Overview

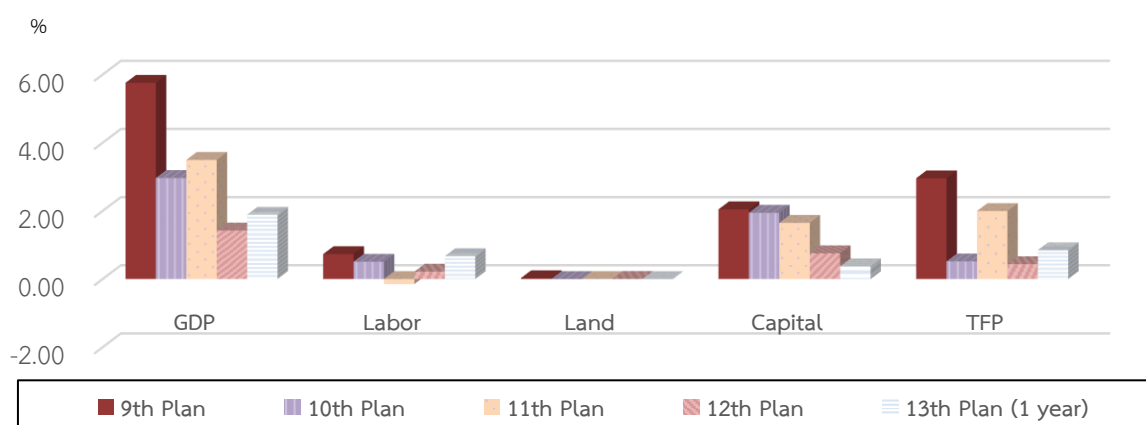
- In 2023, Thai economy increased by 1.9%, decelerated from 2.5% in the preceding year. The reasons behind this were decelerated rate in investments, imports, and exports compared to 2022. Considering the source of growth, TFP increased by 0.85%, capital factor at 0.37%, and labor factor at 0.67%. Overall Thai economy experienced a decelerated decreased.
- During the period of the 9th to 13th National Economic and Social Development Plans, the highest TFP was recorded in the 9th plan, with an average growth rate of 2.96%. This was partly attributed to efforts to restore the economy following the Tom Yum Kung crisis. These efforts included restructuring the economy to promote balance and sustainability through policies such as improving financial stability, enhancing the role of the capital market, and advancing the quality of human resources, science, and technology in the production process.

Table 7 Growth Rate of GDP and Sources of Growth

Unit: Percentage (%)

	average 9 th Plan	average 10 th Plan	average 11 th Plan	average 12 th Plan	average 13 th Plan (1 year)	12 th Plan						13 th Plan
						2017	2018	2019	2020	2021	2022	2023
GDP Growth	5.7	3.0	3.5	1.4	1.9	4.2	4.2	2.1	-6.1	1.6	2.2	1.9
Sources of Growth												
Labor	0.73	0.51	-0.15	0.22	0.67	-0.22	0.37	0.07	-0.03	0.49	0.66	0.67
Land	0.02	-0.00	0.00	0.00	-0.00	-0.00	-0.00	0.00	-0.00	-0.00	-0.00	-0.00
Capital	2.05	1.94	1.65	0.76	0.37	1.49	2.02	0.86	-0.60	0.40	0.39	0.37
TFP	2.96	0.52	1.99	0.44	0.85	2.92	1.83	1.19	-5.43	0.70	1.42	0.85

Figure 10 Sources of GDP Growth Classified by
the National Economic and Social Development Plans



TFP by the kind of sector

- **Agriculture**

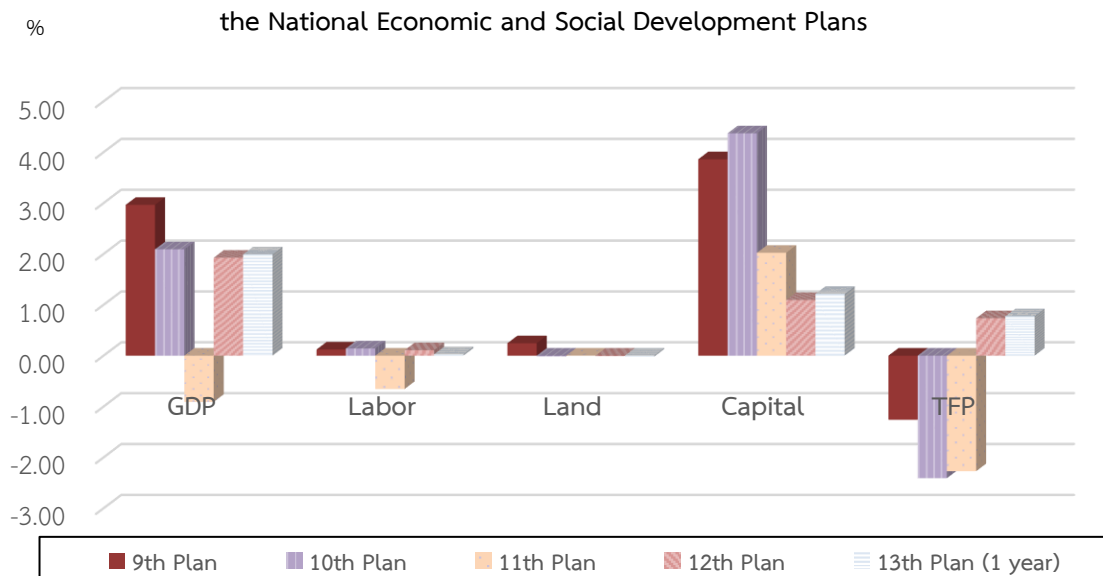
In 2023, the agricultural sector grew by 2.0%, slowed down from 2.5% in 2022. Considering the sources of growth in agriculture, capital factor increased by 1.21%, TFP grew by 0.77%, and labor contributed 0.03%.

During the period of the 9th to 13th National Economic and Social Development Plans, the agricultural sector exhibited the lowest TFP compared to other sectors, despite employing the most labor among all activities. The sources of growth revealed that all factors contributed to expansion, except for land factor, which experienced a downward trend due to urbanization and the fluctuations caused by climate change. However, TFP continued to rise during 12th to 13th plans. This was partly a result of the successful implementation of policies aimed at enhancing the efficiency of agricultural products, such as the promotion of technology and innovation. Consequently, the TFP factor rebounded, reversing the decline observed in previous periods.

Table 8 Growth Rate of GDP and Sources of Growth in the Agricultural Sector

Unit: Percentage (%)												
	average 9 th Plan	average 10 th Plan	average 11 th Plan	average 12 th Plan	average 13 th Plan	12 th Plan						13 th Plan
						2017	2018	2019	2020	2021	2022	2023
GDP Growth	3.0	2.1	-0.9	1.9	2.0	4.9	6.1	-1.0	-3.3	2.4	2.5	2.0
Sources of Growth												
Labor	0.12	0.14	-0.66	0.11	0.03	0.05	0.49	0.01	-0.06	0.04	0.10	0.03
Land	0.24	-0.01	0.00	-0.01	-0.02	-0.00	-0.00	0.00	-0.01	-0.02	-0.03	-0.02
Capital	3.86	4.37	2.02	1.09	1.21	2.04	2.47	0.78	-0.95	1.11	1.12	1.21
TFP	-1.26	-2.41	-2.27	0.74	0.77	2.76	3.14	-1.78	-2.32	1.30	1.30	0.77

Figure 11 Sources of GDP Growth in the Agriculture sector Classified by the National Economic and Social Development Plans



- **Industrial**

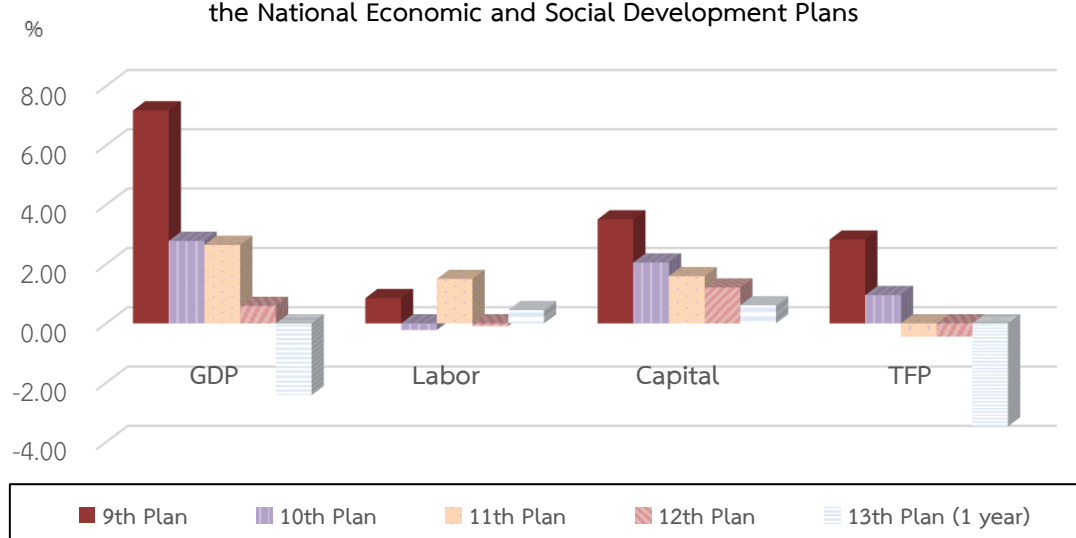
In 2023, the industrial sector contracted by 2.4%, compared to an increase of 0.1% in 2022. Regarding the sources of growth, TFP decreased by 3.47%, while capital and labor factors declined by 0.61% and 0.45%, respectively.

During the period of the 9th to 13th National Economic and Social Development Plans, the industrial sector experienced a continuous decline. The sources of growth revealed that TFP began to decrease during the 11th plan and continued to decline consistently. This was attributed to a reduction in capacity utilization, combined with economic uncertainties such as the COVID-19 pandemic and the international trade war, which directly impacted the Thai economy.

Table 9 Growth Rate of GDP and Sources of Growth in the Industrial Sector

Unit: Percentage (%)												
	average 9 th Plan	average 10 th Plan	average 11 th Plan	average 12 th Plan	average 13 th Plan	12 th Plan						13 th Plan
						2017	2018	2019	2020	2021	2022	2023
GDP Growth	7.2	2.8	2.6	0.5	-2.4	2.1	2.9	-0.1	-5.8	3.8	0.1	-2.4
Sources of Growth												
Labor	0.85	-0.22	1.50	-0.09	0.45	-0.88	0.65	-0.22	-0.59	0.18	0.34	0.45
Capital	3.50	2.05	1.59	1.21	0.61	2.29	2.73	0.03	-0.16	1.15	0.01	0.61
TFP	2.82	0.95	-0.45	-0.44	-3.47	0.72	-0.47	0.07	-5.03	2.49	-0.30	-3.47

Figure 12 Sources of Growth in the Industrial sector Classified by the National Economic and Social Development Plans



• Service

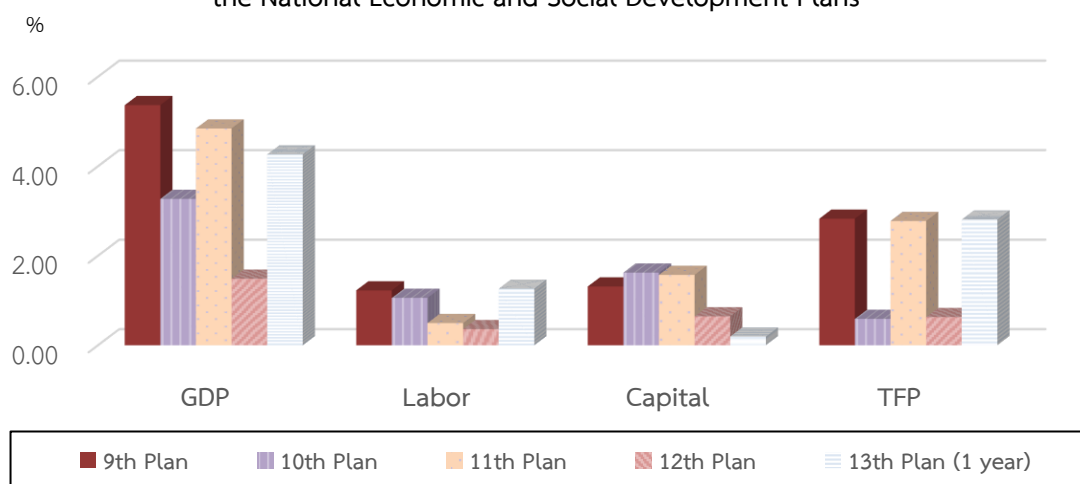
The service sector grew by 4.3% in 2023, accelerated from 0.38% in 2022. Regarding the sources of growth, the main contributors were TFP, which increased by 2.81%, labor factor, which grew by 1.26%, and capital factor, which rose by 0.19%.

During the period of the 9th to 13th National Economic and Social Development Plans, the service sector recorded the highest growth rate and employed the largest labor force compared to other sectors. The source of growth in TFP showed the lowest growth rate during the 12th plan. This was a result of the COVID-19 pandemic, which significantly affected the tourism sector due to a decline in the number of domestic and foreign travelers. However, TFP in the early stages of the 13th plan increased at a high rate, partly due to government policies supporting the tourism industry.

Table 10 Growth Rate of GDP and Sources of Growth in the Service Sector.

	average 9 th Plan	average 10 th Plan	average 11 th Plan	average 12 th Plan	average 13 th Plan	Unit: Percentage (%)						
						12 th Plan						13 th Plan
						2017	2018	2019	2020	2021	2022	2023
GDP Growth	5.4	3.3	4.8	1.9	4.3	5.3	4.7	3.8	-6.7	0.4	3.8	4.3
Sources of Growth												
Labor	1.23	1.06	0.49	0.36	1.26	-0.19	-0.20	0.21	0.24	0.94	1.17	1.26
Capital	1.31	1.62	1.57	0.62	0.19	1.12	1.68	1.17	-0.72	0.04	0.45	0.19
TFP	2.83	0.59	2.78	0.89	2.81	4.32	3.20	2.37	-6.17	-0.57	2.17	2.81

Figure 13 Sources of Growth in the Service sector Classified by the National Economic and Social Development Plans



ANNEX



Concept, definitions, and methodology of Capital Stock of Thailand

1. Definition

- **Capital** is the assets used as factors of production of goods and services, usually consisting of fixed and financial assets. However, it refers here to only fixed assets, defined as tangible assets produced within an economy that can be used repeatedly for more than one year. Newly produced assets can also replace them. Fixed assets consist of construction and equipment.

- **Gross Capital Stock (GCS)** is the sum of fixed assets **accumulated** over each asset's life as they are usually disposed of after a certain period of time when they can no longer provide the production service. GCS is generally measured at one point in time, specifically at the end of the year.

- **Net Capital Stock (NCS)** is equal to gross fixed capital stock reduced for the accumulated consumption of fixed capital. It is the sum of the written-down valued of all the fixed assets still in use.

- **Private Sector Capital Stock** consists of capital stocks owned by the private sector, covering both registered and non-registered ones, as well as fixed assets acquired by households and non-profit institutions. For the household sector, housing is the only asset considered as capital stock.

- **Public Sector Capital Stock** is all capital stock owned by the public sector, which consists of the central government, local municipalities, state-owned enterprises, all kinds of funds operated and controlled by the government, and independent agencies.

- **Depreciation** refers to the depletion of fixed assets. As fixed **assets** are used repeatedly in production, they become less productive, worn off, and downgraded as new technology emerges. Thus, depreciation should be deducted from fixed assets each year, by how much depending on the type of assets and their working life.

- **Service lifetime** is a period of time a fixed asset can be employed for production.

- **Retirement** of fixed assets from the production process takes place when they can no longer provide production service.

- **Incremental Capital Output Ratio: ICOR** is an indicator measuring investment capacity in an economic system. ICOR reflects how much additional investment is required for a 1 unit increase in GDP. The smaller the ICOR, the higher efficiency the last unit of investment provides.

$$\text{ICOR} = \frac{\Delta \text{NCS}_t}{\Delta \text{GDP}_t}$$

- **Capital Productivity: CP** measures units of products produced by 1 unit of capital.

$$\text{CP}_{it} = \frac{\text{GDP}_{it}}{\text{NCS}_{it}}$$

- **Total Factor Productivity: TFP** determines the proportion of GDP growth that is not a result of an increase in factors of production (labor, capital, and land). TFP measures the amount of GDP growth contributed by the residual or technical progress.

$$Y_t = A_t f(K_t, L_t, N_t)$$

$$= A K^\alpha L^\beta N^\delta$$

$$\frac{dY}{Y} = \alpha \frac{dK}{K} + \beta \frac{dL}{L} + \delta \frac{dN}{N} + \frac{dA}{A}$$

$$\text{TFP} = \frac{dY}{Y} - \alpha \frac{dK}{K} - \beta \frac{dL}{L} - \delta \frac{dN}{N}$$

where

Y = Gross Domestic Product (GDP)

A = Constant Term

K = Capital Stock

L = Labor

N = Land

α = Income Share of Capital

β = Income Share of Labor

δ = Income Share of Land

2. Coverage

Capital stock covers all fixed assets employed for producing goods and services in an economic system, categorized by institution, e.g., private sector, public sector, which includes central government, local municipalities, and state-owned enterprises.

3. Methodology

Perpetual Inventory Method or PIM is applied here, which is an indirect method. This method is being used widely as this method draws primary data from the accumulation of capital stock compiled under the System of National Accounts. As a result, outcomes from PIM are consistent with other national income statistics. The basic concept is to calculate the value of all fixed assets in one year, which covers a capital stock in the first year and the additional capital acquired in the following years subtracted by those disposed of during the production process. The total value of fixed assets at the current price before deducting depreciation is **Gross Capital Stock**. In reality, however, all kinds of assets wear out during production, so the value of assets declines each year. A reduction in such value each year is called **Depreciation**. Thus, to find the value of capital stock in existence or **Net Capital Stock** is simply by deducting accumulated depreciation from gross capital stock. An alternative approach for the net capital stock is by adding last year's net capital stock with investment during the year, then subtracting by depreciation.

(1) Gross Capital Stock

$$GCS_t = \sum_{i=1}^n \sum_{t=1}^L GFCF_{it} * (1-\gamma_{it})$$

GCS = Gross Capital Stock

GFCF = Gross Fixed Capital Formation

i = Type of Assets (i = 1,2,3,...,n)

t = Year (t = 1,2,3,...,L)

L = Service Lifetime

γ = Rate of Retirement

(2) Net Capital Stock

$$NCS_t = NCS_{t-1} + GFCF_t - COFC_t$$

$$NCS = \text{Net Capital Stock}$$

$$GFCF = \text{Gross Fixed Capital Formation}$$

$$COFC = \text{Annual Depreciation}$$

ตารางสถิติ

STATISTICAL TABLES

TABLE

TABLE 1 GROSS CAPITAL STOCK OF THAILAND AT CURRENT REPLACEMENT COST

TABLE 2 GROSS CAPITAL STOCK OF THAILAND : CHAIN VOLUME MEASURES (reference year = 2002)

TABLE 3 GROSS CAPITAL STOCK OF PRIVATE SECTOR AT CURRENT REPLACEMENT COST

TABLE 4 GROSS CAPITAL STOCK OF PRIVATE SECTOR : CHAIN VOLUME MEASURES (reference year = 2002)

TABLE 5 GROSS CAPITAL STOCK OF PUBLIC SECTOR AT CURRENT REPLACEMENT COST

TABLE 6 GROSS CAPITAL STOCK OF PUBLIC SECTOR : CHAIN VOLUME MEASURES (reference year = 2002)

TABLE 7 NET CAPITAL STOCK OF THAILAND AT CURRENT REPLACEMENT COST

TABLE 8 NET CAPITAL STOCK OF THAILAND : CHAIN VOLUME MEASURES (reference year = 2002)

TABLE 9 NET CAPITAL STOCK OF PRIVATE SECTOR AT CURRENT REPLACEMENT COST

TABLE 10 NET CAPITAL STOCK OF PRIVATE SECTOR : CHAIN VOLUME MEASURES (reference year = 2002)

TABLE 11 NET CAPITAL STOCK OF PUBLIC SECTOR AT CURRENT REPLACEMENT COST

TABLE 12 NET CAPITAL STOCK OF PUBLIC SECTOR : CHAIN VOLUME MEASURES (reference year = 2002)

TABLE 13 ANNUAL DEPRECIATION OF THAILAND AT CURRENT REPLACEMENT COST

TABLE 14 ANNUAL DEPRECIATION OF THAILAND : CHAIN VOLUME MEASURES (reference year = 2002)

TABLE 15 ANNUAL DEPRECIATION OF PRIVATE SECTOR AT CURRENT REPLACEMENT COST

TABLE 16 ANNUAL DEPRECIATION OF PRIVATE SECTOR : CHAIN VOLUME MEASURES (reference year = 2002)

TABLE 17 ANNUAL DEPRECIATION OF PUBLIC SECTOR AT CURRENT REPLACEMENT COST

TABLE 18 ANNUAL DEPRECIATION OF PUBLIC SECTOR : CHAIN VOLUME MEASURES (reference year = 2002)

TABLE 1 GROSS CAPITAL STOCK OF THAILAND AT CURRENT REPLACEMENT COST

(Unit - Millions of Baht)

Sector	2014	2015	2016	2017	2018	2019	2020r	2021r	2022r	2023p
Agriculture	4,396,285	4,574,379	4,622,639	4,571,993	4,937,453	5,084,021	4,928,732	5,017,668	5,231,671	5,436,349
Agriculture, forestry and fishing	4,396,285	4,574,379	4,622,639	4,571,993	4,937,453	5,084,021	4,928,732	5,017,668	5,231,671	5,436,349
None Agriculture	50,353,887	52,095,986	52,608,866	54,528,399	56,155,855	57,091,801	56,582,973	58,444,208	60,792,376	62,491,839
Industrial	14,828,183	15,381,556	15,464,195	16,071,116	16,686,975	16,943,134	16,970,801	17,828,892	18,555,808	19,114,191
Mining and quarrying	750,879	776,146	778,178	821,059	894,106	931,624	953,487	973,097	986,015	1,014,007
Manufacturing	9,370,122	9,743,445	9,674,551	10,132,837	10,548,934	10,682,231	10,610,682	11,352,714	11,896,830	12,222,183
Electricity, gas, steam and air conditioning supply	4,286,451	4,430,479	4,569,212	4,649,651	4,758,603	4,837,080	4,910,343	4,998,223	5,163,228	5,363,975
Water supply; sewerage, waste management and remediation activities	420,731	431,487	442,254	467,569	485,333	492,199	496,289	504,857	509,736	514,026
Service	35,525,704	36,714,430	37,144,671	38,457,284	39,468,879	40,148,667	39,612,172	40,615,316	42,236,568	43,377,648
Construction	1,637,937	1,741,572	1,779,440	1,838,090	1,893,925	1,912,730	1,957,694	2,041,151	2,059,963	2,075,435
Wholesale and retail trade; repair of motor vehicles and motorcycles	3,978,409	4,144,586	4,187,887	4,497,457	4,680,054	4,777,696	4,599,162	4,721,346	4,869,405	4,989,858
Transportation and storage	9,876,086	10,428,050	10,466,529	11,258,691	11,715,075	11,703,861	11,508,893	11,494,639	12,263,232	12,721,099
Accommodation and food service activities	2,013,612	2,090,257	2,089,788	2,061,467	2,209,974	2,302,732	1,872,236	1,771,761	1,931,116	2,079,698
Information and communication	1,110,594	1,220,421	1,231,653	1,320,030	1,370,769	1,386,591	1,408,017	1,440,599	1,498,901	1,553,085
Financial and insurance activities	692,680	721,474	734,401	804,420	842,545	861,554	886,105	918,048	959,599	999,534
Real estate activities	10,718,131	10,676,397	10,931,436	10,689,160	10,542,400	10,790,644	10,920,752	11,528,699	11,796,696	12,001,785
Professional, scientific and technical activities	27,064	29,237	31,193	31,590	33,877	34,865	35,121	35,655	36,813	37,349
Administrative and support service activities	41,020	44,773	45,956	48,544	51,270	52,400	51,828	52,523	53,791	55,006
Public administration and defence; compulsory social security	859,264	904,021	916,886	1,012,383	1,067,275	1,110,208	1,126,232	1,178,376	1,196,622	1,211,904
Education	1,087,024	1,118,229	1,141,558	1,211,336	1,261,461	1,303,937	1,326,743	1,344,332	1,373,472	1,393,575
Human health and social work activities	2,196,904	2,301,088	2,286,436	2,348,179	2,376,545	2,418,052	2,503,414	2,647,926	2,727,858	2,772,432
Arts, entertainment and recreation	34,618	35,715	35,462	35,293	36,978	37,759	37,342	38,019	39,012	39,781
Other service activities	1,252,362	1,258,611	1,266,046	1,300,644	1,386,732	1,455,637	1,378,632	1,402,243	1,430,087	1,447,105
Activities of households as employers	0	0	0	0	0	0	0	0	0	0
TOTAL	54,750,172	56,670,366	57,231,505	59,100,393	61,093,308	62,175,822	61,511,705	63,461,876	66,024,047	67,928,188

TABLE 1-1 GROWTH RATE OF GROSS CAPITAL STOCK OF THAILAND AT CURRENT REPLACEMENT COST

(Unit - Percent)

Sector	2014	2015	2016r	2017r	2018	2019	2020r	2021r	2022r	2023p
Agriculture	6.2	4.1	1.1	-1.1	8.0	3.0	-3.1	1.8	4.3	3.9
Agriculture, forestry and fishing	6.2	4.1	1.1	-1.1	8.0	3.0	-3.1	1.8	4.3	3.9
None Agriculture	3.4	3.5	1.0	3.6	3.0	1.7	-0.9	3.3	4.0	2.8
Industrial	3.7	3.7	0.5	3.9	3.8	1.5	0.2	5.1	4.1	3.0
Mining and quarrying	4.4	3.4	0.3	5.5	8.9	4.2	2.3	2.1	1.3	2.8
Manufacturing	4.0	4.0	-0.7	4.7	4.1	1.3	-0.7	7.0	4.8	2.7
Electricity, gas, steam and air conditioning supply	2.9	3.4	3.1	1.8	2.3	1.6	1.5	1.8	3.3	3.9
Water supply; sewerage, waste management and remediation activities	2.5	2.6	2.5	5.7	3.8	1.4	0.8	1.7	1.0	0.8
Service	3.2	3.3	1.2	3.5	2.6	1.7	-1.3	2.5	4.0	2.7
Construction	5.4	6.3	2.2	3.3	3.0	1.0	2.4	4.3	0.9	0.8
Wholesale and retail trade; repair of motor vehicles and motorcycles	3.7	4.2	1.0	7.4	4.1	2.1	-3.7	2.7	3.1	2.5
Transportation and storage	3.2	5.6	0.4	7.6	4.1	-0.1	-1.7	-0.1	6.7	3.7
Accommodation and food service activities	3.2	3.8	-0.0	-1.4	7.2	4.2	-18.7	-5.4	9.0	7.7
Information and communication	14.5	9.9	0.9	7.2	3.8	1.2	1.5	2.3	4.0	3.6
Financial and insurance activities	3.6	4.2	1.8	9.5	4.7	2.3	2.8	3.6	4.5	4.2
Real estate activities	1.8	-0.4	2.4	-2.2	-1.4	2.4	1.2	5.6	2.3	1.7
Professional, scientific and technical activities	4.9	8.0	6.7	1.3	7.2	2.9	0.7	1.5	3.2	1.5
Administrative and support service activities	7.4	9.2	2.6	5.6	5.6	2.2	-1.1	1.3	2.4	2.3
Public administration and defence; compulsory social security	3.1	5.2	1.4	10.4	5.4	4.0	1.4	4.6	1.5	1.3
Education	3.3	2.9	2.1	6.1	4.1	3.4	1.7	1.3	2.2	1.5
Human health and social work activities	3.9	4.7	-0.6	2.7	1.2	1.7	3.5	5.8	3.0	1.6
Arts, entertainment and recreation	2.2	3.2	-0.7	-0.5	4.8	2.1	-1.1	1.8	2.6	2.0
Other service activities	1.1	0.5	0.6	2.7	6.6	5.0	-5.3	1.7	2.0	1.2
Activities of households as employers	-	-	-	-	-	-	-	-	-	-
TOTAL	3.6	3.5	1.0	3.3	3.4	1.8	-1.1	3.2	4.0	2.9

TABLE 2 GROSS CAPITAL STOCK OF THAILAND : CHAIN VOLUME MEASURES (reference year = 2002)

(Unit - Millions of Baht)

Sector	2014	2015	2016	2017	2018	2019	2020r	2021r	2022r	2023p
Agriculture	3,285,734	3,444,035	3,622,272	3,728,091	3,896,338	4,000,122	3,885,517	3,924,464	4,001,982	4,111,637
Agriculture, forestry and fishing	3,285,734	3,444,035	3,622,272	3,728,091	3,896,338	4,000,122	3,885,517	3,924,464	4,001,982	4,111,637
None Agriculture	35,782,316	36,360,986	37,297,107	38,031,779	39,064,120	39,584,239	39,223,954	40,184,728	40,943,018	41,573,448
Industrial	10,501,770	10,749,061	10,962,976	11,471,160	11,779,663	11,948,740	11,981,435	12,496,721	12,755,042	13,017,269
Mining and quarrying	711,720	710,534	690,106	717,930	738,266	761,441	777,367	791,465	793,147	812,606
Manufacturing	6,717,807	6,896,637	7,073,131	7,414,159	7,685,386	7,798,849	7,765,613	8,270,537	8,523,461	8,711,361
Electricity, gas, steam and air conditioning supply	2,784,237	2,845,169	2,892,393	3,012,475	3,032,896	3,064,747	3,107,573	3,119,886	3,136,531	3,192,096
Water supply; sewerage, waste management and remediation activities	277,504	282,238	285,858	304,802	309,206	312,858	315,914	317,953	313,309	315,496
Service	25,237,898	25,568,349	26,289,216	26,515,303	27,237,813	27,588,509	27,199,581	27,650,099	28,150,000	28,519,620
Construction	1,136,788	1,250,842	1,369,669	1,367,249	1,410,920	1,430,654	1,463,943	1,513,765	1,503,644	1,497,873
Wholesale and retail trade; repair of motor vehicles and motorcycles	2,407,101	2,532,220	2,603,182	2,659,463	2,728,732	2,793,156	2,692,119	2,728,396	2,760,377	2,805,411
Transportation and storage	7,585,751	7,842,375	7,865,369	8,276,722	8,509,849	8,360,495	8,163,067	8,141,692	8,483,399	8,719,474
Accommodation and food service activities	1,406,235	1,496,585	1,565,465	1,530,178	1,557,947	1,632,467	1,372,911	1,292,264	1,372,272	1,442,486
Information and communication	695,314	744,011	763,000	824,533	843,082	854,184	866,843	874,771	891,466	911,432
Financial and insurance activities	408,745	403,236	408,296	428,946	437,639	446,706	460,124	470,038	480,979	496,588
Real estate activities	8,098,576	7,547,799	7,549,418	7,190,222	7,402,237	7,541,278	7,604,736	7,930,710	7,934,706	7,883,569
Professional, scientific and technical activities	20,574	20,809	21,605	21,854	22,618	23,504	23,856	23,849	24,221	24,265
Administrative and support service activities	30,865	32,118	32,819	34,623	35,857	37,429	37,578	37,740	37,916	38,603
Public administration and defence; compulsory social security	647,814	635,001	658,544	693,063	711,697	738,657	748,869	771,980	770,044	775,434
Education	709,337	729,181	776,635	818,583	844,124	874,468	893,496	895,631	900,672	906,641
Human health and social work activities	1,220,987	1,353,848	1,541,641	1,552,589	1,581,006	1,602,237	1,633,613	1,706,835	1,724,439	1,739,558
Arts, entertainment and recreation	21,565	22,821	23,967	23,018	24,034	25,768	25,644	25,950	26,195	26,641
Other service activities	800,967	823,076	924,368	915,578	946,523	1,024,080	1,007,179	1,019,415	1,028,669	1,036,717
Activities of households as employers	0	0	0	0	0	0	0	0	0	0
TOTAL	39,053,137	39,785,070	40,892,866	41,729,796	42,920,577	43,538,253	43,072,386	44,077,483	44,912,305	45,646,568

TABLE 2-1 GROWTH RATE OF GROSS CAPITAL STOCK OF THAILAND : CHAIN VOLUME MEASURES (reference year = 2002)

(Unit - Percent)

Sector	2014	2015	2016	2017	2018	2019	2020r	2021r	2022r	2023p
Agriculture	1.4	4.8	5.2	2.9	4.5	2.7	-2.9	1.0	2.0	2.7
Agriculture, forestry and fishing	1.4	4.8	5.2	2.9	4.5	2.7	-2.9	1.0	2.0	2.7
None Agriculture	1.8	1.6	2.6	2.0	2.7	1.3	-0.9	2.4	1.9	1.5
Industrial	0.4	2.4	2.0	4.6	2.7	1.4	0.3	4.3	2.1	2.1
Mining and quarrying	3.9	-0.2	-2.9	4.0	2.8	3.1	2.1	1.8	0.2	2.5
Manufacturing	-0.9	2.7	2.6	4.8	3.7	1.5	-0.4	6.5	3.1	2.2
Electricity, gas, steam and air conditioning supply	2.6	2.2	1.7	4.2	0.7	1.1	1.4	0.4	0.5	1.8
Water supply; sewerage, waste management and remediation activities	1.9	1.7	1.3	6.6	1.4	1.2	1.0	0.6	-1.5	0.7
Service	2.3	1.3	2.8	0.9	2.7	1.3	-1.4	1.7	1.8	1.3
Construction	0.8	10.0	9.5	-0.2	3.2	1.4	2.3	3.4	-0.7	-0.4
Wholesale and retail trade; repair of motor vehicles and motorcycles	-1.3	5.2	2.8	2.2	2.6	2.4	-3.6	1.3	1.2	1.6
Transportation and storage	1.9	3.4	0.3	5.2	2.8	-1.8	-2.4	-0.3	4.2	2.8
Accommodation and food service activities	2.3	6.4	4.6	-2.3	1.8	4.8	-15.9	-5.9	6.2	5.1
Information and communication	9.3	7.0	2.6	8.1	2.2	1.3	1.5	0.9	1.9	2.2
Financial and insurance activities	0.9	-1.3	1.3	5.1	2.0	2.1	3.0	2.2	2.3	3.2
Real estate activities	6.7	-6.8	0.0	-4.8	2.9	1.9	0.8	4.3	0.1	-0.6
Professional, scientific and technical activities	2.4	1.1	3.8	1.2	3.5	3.9	1.5	-0.0	1.6	0.2
Administrative and support service activities	0.6	4.1	2.2	5.5	3.6	4.4	0.4	0.4	0.5	1.8
Public administration and defence; compulsory social security	-0.2	-2.0	3.7	5.2	2.7	3.8	1.4	3.1	-0.3	0.7
Education	-1.9	2.8	6.5	5.4	3.1	3.6	2.2	0.2	0.6	0.7
Human health and social work activities	-5.2	10.9	13.9	0.7	1.8	1.3	2.0	4.5	1.0	0.9
Arts, entertainment and recreation	-4.2	5.8	5.0	-4.0	4.4	7.2	-0.5	1.2	0.9	1.7
Other service activities	-5.0	2.8	12.3	-1.0	3.4	8.2	-1.7	1.2	0.9	0.8
Activities of households as employers	-	-	-	-	-	-	-	-	-	-
TOTAL	1.7	1.9	2.8	2.0	2.9	1.4	-1.1	2.3	1.9	1.6

TABLE 3 GROSS CAPITAL STOCK OF PRIVATE SECTOR AT CURRENT REPLACEMENT COST

(Unit - Millions of Baht)

Sector	2014	2015	2016	2017	2018	2019	2020r	2021r	2022r	2023p
Agriculture	1,992,968	2,074,161	2,206,016	2,473,083	2,671,261	2,752,489	2,469,295	2,478,728	2,621,067	2,761,665
Agriculture, forestry and fishing	1,992,968	2,074,161	2,206,016	2,473,083	2,671,261	2,752,489	2,469,295	2,478,728	2,621,067	2,761,665
None Agriculture	35,537,387	36,609,223	36,748,433	38,674,147	39,911,250	40,886,243	40,033,923	41,340,859	43,216,202	44,555,944
Industrial	10,948,841	11,425,044	11,384,730	11,995,327	12,612,476	12,898,351	12,759,575	13,509,130	14,129,296	14,582,721
Mining and quarrying	628,914	651,062	653,483	695,470	757,343	779,806	797,154	807,671	817,939	842,174
Manufacturing	8,862,917	9,208,140	9,144,289	9,613,225	10,124,023	10,358,773	10,257,558	10,966,722	11,505,424	11,822,517
Electricity, gas, steam and air conditioning supply	1,317,878	1,423,154	1,440,709	1,527,336	1,570,615	1,597,005	1,550,672	1,580,503	1,648,169	1,759,454
Water supply; sewerage, waste management and remediation activities	139,132	142,688	146,249	159,296	160,495	162,765	154,192	154,234	157,763	158,577
Service	24,588,547	25,184,179	25,363,703	26,678,820	27,298,774	27,987,892	27,274,348	27,831,729	29,086,906	29,973,223
Construction	832,186	873,224	924,401	991,631	1,043,837	1,092,456	982,665	982,998	1,003,511	1,015,199
Wholesale and retail trade; repair of motor vehicles and motorcycles	3,942,444	4,106,994	4,150,698	4,459,858	4,640,929	4,747,310	4,570,187	4,691,129	4,838,436	4,958,622
Transportation and storage	4,304,097	4,469,462	4,383,487	4,993,117	5,195,519	5,307,584	5,225,037	5,195,577	5,696,149	5,985,277
Accommodation and food service activities	1,319,339	1,374,574	1,385,467	1,381,101	1,502,694	1,565,766	1,218,077	1,141,014	1,284,308	1,418,479
Information and communication	657,805	719,743	772,702	840,727	873,043	883,549	882,827	888,706	939,661	984,656
Financial and insurance activities	564,895	588,181	605,683	673,018	704,916	721,164	736,353	758,904	797,091	836,160
Real estate activities	9,762,180	9,723,315	10,006,418	9,899,338	9,773,964	9,993,324	10,026,343	10,486,505	10,748,088	10,942,388
Professional, scientific and technical activities	17,796	19,225	20,512	21,089	22,277	22,926	23,095	23,410	24,207	24,597
Administrative and support service activities	9,078	11,440	12,579	13,252	13,996	14,305	13,112	13,283	13,555	13,867
Public administration and defence; compulsory social security	0	0	0	0	0	0	0	0	0	0
Education	724,013	746,541	787,378	878,170	914,509	945,302	949,019	949,770	969,617	982,415
Human health and social work activities	1,485,678	1,574,657	1,408,673	1,504,971	1,523,151	1,550,576	1,579,004	1,627,680	1,674,659	1,699,251
Arts, entertainment and recreation	19,257	17,281	13,535	15,655	16,402	16,749	16,527	16,864	17,695	18,084
Other service activities	949,779	959,540	892,170	1,006,894	1,073,538	1,126,882	1,052,103	1,055,889	1,079,930	1,094,229
Activities of households as employers	0	0	0	0	0	0	0	0	0	0
TOTAL	37,530,355	38,683,384	38,954,449	41,147,230	42,582,511	43,638,731	42,503,218	43,819,587	45,837,269	47,317,610

TABLE 3-1 GROWTH RATE OF GROSS CAPITAL STOCK OF PRIVATE SECTOR AT CURRENT REPLACEMENT COST

(Unit - Percent)

Sector	2014	2015	2016	2017	2018	2019	2020r	2021r	2022r	2023p
Agriculture	7.0	4.1	6.4	12.1	8.0	3.0	-10.3	0.4	5.7	5.4
Agriculture, forestry and fishing	7.0	4.1	6.4	12.1	8.0	3.0	-10.3	0.4	5.7	5.4
None Agriculture	3.3	3.0	0.4	5.2	3.2	2.4	-2.1	3.3	4.5	3.1
Industrial	3.9	4.3	-0.4	5.4	5.1	2.3	-1.1	5.9	4.6	3.2
Mining and quarrying	4.6	3.5	0.4	6.4	8.9	3.0	2.2	1.3	1.3	3.0
Manufacturing	3.8	3.9	-0.7	5.1	5.3	2.3	-1.0	6.9	4.9	2.8
Electricity, gas, steam and air conditioning supply	4.3	8.0	1.2	6.0	2.8	1.7	-2.9	1.9	4.3	6.8
Water supply; sewerage, waste management and remediation activities	2.5	2.6	2.5	8.9	0.8	1.4	-5.3	0.0	2.3	0.5
Service	3.0	2.4	0.7	5.2	2.3	2.5	-2.5	2.0	4.5	3.0
Construction	3.8	4.9	5.9	7.3	5.3	4.7	-10.0	0.0	2.1	1.2
Wholesale and retail trade; repair of motor vehicles and motorcycles	3.7	4.2	1.1	7.4	4.1	2.3	-3.7	2.6	3.1	2.5
Transportation and storage	3.3	3.8	-1.9	13.9	4.1	2.2	-1.6	-0.6	9.6	5.1
Accommodation and food service activities	3.3	4.2	0.8	-0.3	8.8	4.2	-22.2	-6.3	12.6	10.4
Information and communication	15.2	9.4	7.4	8.8	3.8	1.2	-0.1	0.7	5.7	4.8
Financial and insurance activities	3.7	4.1	3.0	11.1	4.7	2.3	2.1	3.1	5.0	4.9
Real estate activities	1.8	-0.4	2.9	-1.1	-1.3	2.2	0.3	4.6	2.5	1.8
Professional, scientific and technical activities	4.9	8.0	6.7	2.8	5.6	2.9	0.7	1.4	3.4	1.6
Administrative and support service activities	24.9	26.0	10.0	5.4	5.6	2.2	-8.3	1.3	2.0	2.3
Public administration and defence; compulsory social security	-	-	-	-	-	-	-	-	-	-
Education	4.1	3.1	5.5	11.5	4.1	3.4	0.4	0.1	2.1	1.3
Human health and social work activities	4.4	6.0	-10.5	6.8	1.2	1.8	1.8	3.1	2.9	1.5
Arts, entertainment and recreation	0.6	-10.3	-21.7	15.7	4.8	2.1	-1.3	2.0	4.9	2.2
Other service activities	-1.6	1.0	-7.0	12.9	6.6	5.0	-6.6	0.4	2.3	1.3
Activities of households as employers	-	-	-	-	-	-	-	-	-	-
TOTAL	3.5	3.1	0.7	5.6	3.5	2.5	-2.6	3.1	4.6	3.2

TABLE 4 GROSS CAPITAL STOCK OF PRIVATE SECTOR : CHAIN VOLUME MEASURES (reference year = 2002)

(Unit - Millions of Baht)

Sector	2014	2015	2016	2017	2018	2019	2020r	2021r	2022r	2023p
Agriculture	1,489,521	1,561,628	1,728,620	2,016,598	2,107,996	2,165,665	1,946,643	1,938,684	2,004,992	2,088,710
Agriculture, forestry and fishing	1,489,521	1,561,628	1,728,620	2,016,598	2,107,996	2,165,665	1,946,643	1,938,684	2,004,992	2,088,710
None Agriculture	25,223,414	25,481,333	25,981,319	26,857,804	27,750,081	28,377,510	27,797,990	28,467,632	29,169,462	29,707,087
Industrial	7,900,253	8,130,837	8,285,804	8,755,854	9,122,423	9,332,133	9,247,357	9,735,836	10,004,478	10,254,548
Mining and quarrying	596,116	596,025	579,524	608,116	625,341	637,357	649,910	656,916	657,947	674,901
Manufacturing	6,354,172	6,517,735	6,685,452	7,033,960	7,375,817	7,562,698	7,507,171	7,989,336	8,243,037	8,426,497
Electricity, gas, steam and air conditioning supply	856,017	913,920	911,992	989,547	1,001,029	1,011,851	981,360	986,546	1,001,219	1,047,046
Water supply; sewerage, waste management and remediation activities	91,767	93,333	94,530	103,843	102,251	103,459	98,151	97,134	96,969	97,330
Service	17,277,331	17,308,122	17,652,153	18,065,460	18,595,429	19,012,621	18,525,009	18,722,247	19,157,105	19,449,101
Construction	577,569	627,174	711,532	737,620	777,632	817,122	734,830	729,018	732,504	732,689
Wholesale and retail trade; repair of motor vehicles and motorcycles	2,385,340	2,509,252	2,580,065	2,637,229	2,705,919	2,775,391	2,675,159	2,710,935	2,742,822	2,787,850
Transportation and storage	3,305,948	3,361,244	3,294,097	3,670,645	3,774,035	3,791,403	3,706,035	3,680,047	3,940,456	4,102,515
Accommodation and food service activities	921,377	984,167	1,037,854	1,025,156	1,059,340	1,110,011	893,215	832,217	912,642	983,860
Information and communication	411,833	438,779	478,682	525,144	536,958	544,294	543,510	539,646	558,860	577,848
Financial and insurance activities	333,335	328,734	336,730	358,874	366,147	373,911	382,359	388,553	399,522	415,418
Real estate activities	7,376,265	6,874,007	6,910,586	6,658,936	6,862,688	6,984,053	6,981,908	7,213,774	7,229,391	7,187,688
Professional, scientific and technical activities	13,529	13,683	14,207	14,589	14,873	15,455	15,686	15,658	15,927	15,980
Administrative and support service activities	6,829	8,205	8,982	9,450	9,787	10,216	9,505	9,543	9,553	9,730
Public administration and defence; compulsory social security	0	0	0	0	0	0	0	0	0	0
Education	472,455	486,810	535,678	593,442	611,959	633,957	639,120	632,766	635,841	639,148
Human health and social work activities	825,706	926,453	949,806	995,071	1,013,283	1,027,435	1,030,385	1,049,191	1,058,650	1,066,192
Arts, entertainment and recreation	11,993	11,039	9,145	10,207	10,657	11,426	11,345	11,506	11,877	12,106
Other service activities	607,446	627,498	651,394	708,796	732,752	792,793	768,630	767,621	776,801	783,915
Activities of households as employers	0	0	0	0	0	0	0	0	0	0
TOTAL	26,711,065	27,038,358	27,695,479	28,838,169	29,817,212	30,500,259	29,722,116	30,389,453	31,155,077	31,770,850

TABLE 4-1 GROWTH RATE OF GROSS CAPITAL STOCK OF PRIVATE SECTOR : CHAIN VOLUME MEASURES (reference year = 2002)

(Unit - Percent)

Sector	2014	2015	2016	2017	2018	2019	2020r	2021r	2022r	2023p
Agriculture	2.2	4.8	10.7	16.7	4.5	2.7	-10.1	-0.4	3.4	4.2
Agriculture, forestry and fishing	2.2	4.8	10.7	16.7	4.5	2.7	-10.1	-0.4	3.4	4.2
None Agriculture	1.7	1.0	2.0	3.4	3.3	2.3	-2.0	2.4	2.5	1.8
Industrial	-0.2	2.9	1.9	5.7	4.2	2.3	-0.9	5.3	2.8	2.5
Mining and quarrying	4.1	-0.0	-2.8	4.9	2.8	1.9	2.0	1.1	0.2	2.6
Manufacturing	-1.1	2.6	2.6	5.2	4.9	2.5	-0.7	6.4	3.2	2.2
Electricity, gas, steam and air conditioning supply	4.1	6.8	-0.2	8.5	1.2	1.1	-3.0	0.5	1.5	4.6
Water supply; sewerage, waste management and remediation activities	1.9	1.7	1.3	9.9	-1.5	1.2	-5.1	-1.0	-0.2	0.4
Service	2.6	0.2	2.0	2.3	2.9	2.2	-2.6	1.1	2.3	1.5
Construction	-0.7	8.6	13.5	3.7	5.4	5.1	-10.1	-0.8	0.5	0.0
Wholesale and retail trade; repair of motor vehicles and motorcycles	-1.3	5.2	2.8	2.2	2.6	2.6	-3.6	1.3	1.2	1.6
Transportation and storage	1.9	1.7	-2.0	11.4	2.8	0.5	-2.3	-0.7	7.1	4.1
Accommodation and food service activities	2.4	6.8	5.5	-1.2	3.3	4.8	-19.5	-6.8	9.7	7.8
Information and communication	10.0	6.5	9.1	9.7	2.2	1.4	-0.1	-0.7	3.6	3.4
Financial and insurance activities	1.0	-1.4	2.4	6.6	2.0	2.1	2.3	1.6	2.8	4.0
Real estate activities	6.7	-6.8	0.5	-3.6	3.1	1.8	-0.0	3.3	0.2	-0.6
Professional, scientific and technical activities	2.4	1.1	3.8	2.7	1.9	3.9	1.5	-0.2	1.7	0.3
Administrative and support service activities	17.0	20.1	9.5	5.2	3.6	4.4	-7.0	0.4	0.1	1.9
Public administration and defence; compulsory social security	-	-	-	-	-	-	-	-	-	-
Education	-1.1	3.0	10.0	10.8	3.1	3.6	0.8	-1.0	0.5	0.5
Human health and social work activities	-4.7	12.2	2.5	4.8	1.8	1.4	0.3	1.8	0.9	0.7
Arts, entertainment and recreation	-5.7	-8.0	-17.2	11.6	4.4	7.2	-0.7	1.4	3.2	1.9
Other service activities	-7.5	3.3	3.8	8.8	3.4	8.2	-3.0	-0.1	1.2	0.9
Activities of households as employers	-	-	-	-	-	-	-	-	-	-
TOTAL	1.8	1.2	2.4	4.1	3.4	2.3	-2.6	2.2	2.5	2.0

TABLE 5 GROSS CAPITAL STOCK OF PUBLIC SECTOR AT CURRENT REPLACEMENT COST

(Unit - Millions of Baht)

Sector	2014	2015	2016	2017	2018	2019	2020r	2021r	2022r	2023p
Agriculture	2,403,317	2,500,218	2,416,623	2,098,911	2,266,192	2,331,532	2,459,438	2,538,940	2,610,604	2,674,684
Agriculture, forestry and fishing	2,403,317	2,500,218	2,416,623	2,098,911	2,266,192	2,331,532	2,459,438	2,538,940	2,610,604	2,674,684
None Agriculture	14,816,500	15,486,763	15,860,433	15,854,253	16,244,605	16,205,559	16,549,050	17,103,348	17,576,174	17,935,895
Industrial	3,879,343	3,956,511	4,079,465	4,075,789	4,074,500	4,044,784	4,211,225	4,319,762	4,426,513	4,531,470
Mining and quarrying	121,965	125,084	124,695	125,589	136,762	151,817	156,334	165,427	168,076	171,834
Manufacturing	507,205	535,305	530,262	519,612	424,911	323,458	353,123	385,992	391,406	399,665
Electricity, gas, steam and air conditioning supply	2,968,573	3,007,325	3,128,503	3,122,315	3,187,988	3,240,074	3,359,671	3,417,720	3,515,058	3,604,521
Water supply; sewerage, waste management and remediation activities	281,600	288,798	296,005	308,273	324,838	329,434	342,097	350,623	351,973	355,449
Service	10,937,157	11,530,252	11,780,968	11,778,464	12,170,105	12,160,775	12,337,824	12,783,586	13,149,662	13,404,425
Construction	805,750	868,348	855,039	846,459	850,088	820,274	975,030	1,058,153	1,056,452	1,060,236
Wholesale and retail trade; repair of motor vehicles and motorcycles	35,965	37,591	37,188	37,599	39,125	30,386	28,975	30,217	30,969	31,237
Transportation and storage	5,571,989	5,958,588	6,083,042	6,265,574	6,519,556	6,396,277	6,283,856	6,299,062	6,567,084	6,735,822
Accommodation and food service activities	694,273	715,683	704,321	680,367	707,280	736,966	654,159	630,747	646,808	661,219
Information and communication	452,789	500,678	458,951	479,303	497,726	503,041	525,190	551,894	559,240	568,429
Financial and insurance activities	127,786	133,292	128,718	131,402	137,630	140,390	149,752	159,144	162,508	163,374
Real estate activities	955,950	953,082	925,018	789,822	768,436	797,321	894,410	1,042,194	1,048,608	1,059,398
Professional, scientific and technical activities	9,267	10,012	10,681	10,502	11,601	11,939	12,027	12,245	12,606	12,752
Administrative and support service activities	31,942	33,333	33,377	35,292	37,274	38,095	38,716	39,240	40,236	41,140
Public administration and defence; compulsory social security	859,264	904,021	916,886	1,012,383	1,067,275	1,110,208	1,126,232	1,178,376	1,196,622	1,211,904
Education	363,012	371,688	354,180	333,166	346,952	358,635	377,724	394,561	403,856	411,160
Human health and social work activities	711,226	726,430	877,763	843,207	853,394	867,476	924,411	1,020,246	1,053,199	1,073,181
Arts, entertainment and recreation	15,361	18,434	21,927	19,637	20,575	21,010	20,815	21,154	21,317	21,698
Other service activities	302,583	299,071	373,876	293,750	313,193	328,756	326,529	346,354	350,157	352,877
Activities of households as employers	0	0	0	0	0	0	0	0	0	0
TOTAL	17,219,817	17,986,982	18,277,056	17,953,163	18,510,797	18,537,091	19,008,487	19,642,288	20,186,778	20,610,579

TABLE 5-1 GROWTH RATE OF GROSS CAPITAL STOCK OF PUBLIC SECTOR AT CURRENT REPLACEMENT COST

(Unit - Percent)

Sector	2014	2015	2016	2017	2018	2019	2020r	2021r	2022r	2023p
Agriculture	5.6	4.0	-3.3	-13.1	8.0	2.9	5.5	3.2	2.8	2.5
Agriculture, forestry and fishing	5.6	4.0	-3.3	-13.1	8.0	2.9	5.5	3.2	2.8	2.5
None Agriculture	3.6	4.5	2.4	-0.0	2.5	-0.2	2.1	3.3	2.8	2.0
Industrial	3.0	2.0	3.1	-0.1	-0.0	-0.7	4.1	2.6	2.5	2.4
Mining and quarrying	3.5	2.6	-0.3	0.7	8.9	11.0	3.0	5.8	1.6	2.2
Manufacturing	7.9	5.5	-0.9	-2.0	-18.2	-23.9	9.2	9.3	1.4	2.1
Electricity, gas, steam and air conditioning supply	2.2	1.3	4.0	-0.2	2.1	1.6	3.7	1.7	2.8	2.5
Water supply; sewerage, waste management and remediation activities	2.5	2.6	2.5	4.1	5.4	1.4	3.8	2.5	0.4	1.0
Service	3.8	5.4	2.2	-0.0	3.3	-0.1	1.5	3.6	2.9	1.9
Construction	7.1	7.8	-1.5	-1.0	0.4	-3.5	18.9	8.5	-0.2	0.4
Wholesale and retail trade; repair of motor vehicles and motorcycles	4.9	4.5	-1.1	1.1	4.1	-22.3	-4.6	4.3	2.5	0.9
Transportation and storage	3.2	6.9	2.1	3.0	4.1	-1.9	-1.8	0.2	4.3	2.6
Accommodation and food service activities	3.0	3.1	-1.6	-3.4	4.0	4.2	-11.2	-3.6	2.5	2.2
Information and communication	13.5	10.6	-8.3	4.4	3.8	1.1	4.4	5.1	1.3	1.6
Financial and insurance activities	3.1	4.3	-3.4	2.1	4.7	2.0	6.7	6.3	2.1	0.5
Real estate activities	1.7	-0.3	-2.9	-14.6	-2.7	3.8	12.2	16.5	0.6	1.0
Professional, scientific and technical activities	4.9	8.0	6.7	-1.7	10.5	2.9	0.7	1.8	2.9	1.2
Administrative and support service activities	3.3	4.4	0.1	5.7	5.6	2.2	1.6	1.4	2.5	2.2
Public administration and defence; compulsory social security	3.1	5.2	1.4	10.4	5.4	4.0	1.4	4.6	1.5	1.3
Education	1.7	2.4	-4.7	-5.9	4.1	3.4	5.3	4.5	2.4	1.8
Human health and social work activities	2.8	2.1	20.8	-3.9	1.2	1.7	6.6	10.4	3.2	1.9
Arts, entertainment and recreation	4.4	20.0	18.9	-10.4	4.8	2.1	-0.9	1.6	0.8	1.8
Other service activities	10.5	-1.2	25.0	-21.4	6.6	5.0	-0.7	6.1	1.1	0.8
Activities of households as employers	-	-	-	-	-	-	-	-	-	-
TOTAL	3.9	4.5	1.6	-1.8	3.1	0.1	2.5	3.3	2.8	2.1

TABLE 6 GROSS CAPITAL STOCK OF PUBLIC SECTOR : CHAIN VOLUME MEASURES (reference year = 2002)

(Unit - Millions of Baht)

Sector	2014	2015	2016	2017	2018	2019	2020r	2021r	2022r	2023p
Agriculture	1,796,214	1,882,408	1,893,653	1,711,494	1,788,343	1,834,458	1,938,875	1,985,781	1,996,991	2,022,927
Agriculture, forestry and fishing	1,796,214	1,882,408	1,893,653	1,711,494	1,788,343	1,834,458	1,938,875	1,985,781	1,996,991	2,022,927
None Agriculture	10,527,958	10,848,375	11,284,704	11,139,959	11,277,176	11,169,777	11,387,125	11,677,204	11,734,314	11,827,477
Industrial	2,590,007	2,609,773	2,668,052	2,714,477	2,667,871	2,634,852	2,741,381	2,777,742	2,775,030	2,792,778
Mining and quarrying	115,605	114,510	110,583	109,815	112,926	124,085	127,458	134,550	135,201	137,705
Manufacturing	363,636	378,902	387,679	380,199	309,568	236,150	258,441	281,200	280,424	284,864
Electricity, gas, steam and air conditioning supply	1,928,218	1,931,247	1,980,399	2,022,926	2,031,865	2,052,894	2,126,212	2,133,339	2,135,311	2,145,049
Water supply; sewerage, waste management and remediation activities	185,737	188,906	191,329	200,961	206,956	209,400	217,764	220,819	216,341	218,167
Service	7,942,208	8,248,166	8,630,545	8,429,509	8,619,350	8,545,496	8,652,170	8,908,639	8,969,870	9,045,747
Construction	559,221	623,671	658,141	629,633	633,293	613,538	729,119	784,753	771,146	765,191
Wholesale and retail trade; repair of motor vehicles and motorcycles	21,761	22,968	23,117	22,234	22,813	17,765	16,961	17,462	17,556	17,562
Transportation and storage	4,279,805	4,481,133	4,571,273	4,606,078	4,735,816	4,569,094	4,457,034	4,461,647	4,542,945	4,616,962
Accommodation and food service activities	484,858	512,418	527,611	505,022	498,607	522,457	479,697	460,048	459,631	458,626
Information and communication	283,479	305,230	284,316	299,387	306,122	309,889	323,332	335,124	332,605	333,583
Financial and insurance activities	75,404	74,497	71,561	70,067	71,487	72,789	77,759	81,479	81,452	81,166
Real estate activities	722,314	673,794	638,834	531,287	539,551	557,227	622,830	716,939	705,319	695,886
Professional, scientific and technical activities	7,045	7,125	7,398	7,265	7,745	8,048	8,169	8,191	8,295	8,286
Administrative and support service activities	24,031	23,908	23,833	25,168	26,065	27,208	28,068	28,192	28,358	28,868
Public administration and defence; compulsory social security	647,814	635,001	658,544	693,063	711,697	738,657	748,869	771,980	770,044	775,434
Education	236,883	242,372	240,958	225,142	232,167	240,513	254,378	262,867	264,833	267,495
Human health and social work activities	395,283	427,397	591,837	557,520	567,724	574,803	603,228	657,643	665,788	673,365
Arts, entertainment and recreation	9,569	11,780	14,820	12,808	13,373	14,338	14,295	14,440	14,315	14,532
Other service activities	193,520	195,578	272,973	206,782	213,771	231,287	238,549	251,794	251,868	252,802
Activities of households as employers	0	0	0	0	0	0	0	0	0	0
TOTAL	12,318,051	12,723,124	13,174,290	12,860,088	13,067,482	12,999,522	13,313,725	13,650,674	13,718,767	13,836,642

TABLE 6-1 GROWTH RATE OF GROSS CAPITAL STOCK OF PUBLIC SECTOR : CHAIN VOLUME MEASURES (reference year = 2002)

(Unit - Percent)

Sector	2014	2015	2016	2017	2018	2019	2020r	2021r	2022r	2023p
Agriculture	0.8	4.8	0.6	-9.6	4.5	2.6	5.7	2.4	0.6	1.3
Agriculture, forestry and fishing	0.8	4.8	0.6	-9.6	4.5	2.6	5.7	2.4	0.6	1.3
None Agriculture	1.8	3.0	4.0	-1.3	1.2	-1.0	1.9	2.5	0.5	0.8
Industrial	2.1	0.8	2.2	1.7	-1.7	-1.2	4.0	1.3	-0.1	0.6
Mining and quarrying	3.0	-0.9	-3.4	-0.7	2.8	9.9	2.7	5.6	0.5	1.9
Manufacturing	2.7	4.2	2.3	-1.9	-18.6	-23.7	9.4	8.8	-0.3	1.6
Electricity, gas, steam and air conditioning supply	2.0	0.2	2.5	2.1	0.4	1.0	3.6	0.3	0.1	0.5
Water supply; sewerage, waste management and remediation activities	1.9	1.7	1.3	5.0	3.0	1.2	4.0	1.4	-2.0	0.8
Service	1.7	3.9	4.6	-2.3	2.3	-0.9	1.2	3.0	0.7	0.8
Construction	2.4	11.5	5.5	-4.3	0.6	-3.1	18.8	7.6	-1.7	-0.8
Wholesale and retail trade; repair of motor vehicles and motorcycles	-0.2	5.5	0.6	-3.8	2.6	-22.1	-4.5	3.0	0.5	0.0
Transportation and storage	1.9	4.7	2.0	0.8	2.8	-3.5	-2.5	0.1	1.8	1.6
Accommodation and food service activities	2.0	5.7	3.0	-4.3	-1.3	4.8	-8.2	-4.1	-1.1	-0.2
Information and communication	8.4	7.7	-6.9	5.3	2.2	1.2	4.3	3.6	-0.8	0.3
Financial and insurance activities	0.5	-1.2	-3.9	-2.1	2.0	1.8	6.8	4.8	-0.0	-0.4
Real estate activities	6.5	-6.7	-5.2	-16.8	1.6	3.3	11.8	15.1	-1.6	-1.3
Professional, scientific and technical activities	2.4	1.1	3.8	-1.8	6.6	3.9	1.5	0.3	1.3	-0.1
Administrative and support service activities	-3.3	-0.5	-0.3	5.6	3.6	4.4	3.2	0.4	0.6	1.8
Public administration and defence; compulsory social security	-0.2	-2.0	3.7	5.2	2.7	3.8	1.4	3.1	-0.3	0.7
Education	-3.4	2.3	-0.6	-6.6	3.1	3.6	5.8	3.3	0.7	1.0
Human health and social work activities	-6.3	8.1	38.5	-5.8	1.8	1.2	4.9	9.0	1.2	1.1
Arts, entertainment and recreation	-2.2	23.1	25.8	-13.6	4.4	7.2	-0.3	1.0	-0.9	1.5
Other service activities	3.9	1.1	39.6	-24.2	3.4	8.2	3.1	5.6	0.0	0.4
Activities of households as employers	-	-	-	-	-	-	-	-	-	-
TOTAL	1.7	3.3	3.5	-2.4	1.6	-0.5	2.4	2.5	0.5	0.9

TABLE 7 NET CAPITAL STOCK OF THAILAND AT CURRENT REPLACEMENT COST

(Unit - Millions of Baht)

Sector	2014	2015	2016	2017	2018	2019	2020r	2021r	2022r	2023p
Agriculture	2,762,499	2,849,773	2,833,022	2,768,015	2,974,634	3,033,192	2,947,371	2,998,263	3,112,841	3,204,634
Agriculture, forestry and fishing	2,762,499	2,849,773	2,833,022	2,768,015	2,974,634	3,033,192	2,947,371	2,998,263	3,112,841	3,204,634
None Agriculture	32,094,162	32,980,284	33,269,347	34,313,147	35,291,242	35,783,097	35,515,101	35,985,015	36,912,681	37,549,929
Industrial	9,015,990.6	9,314,184.2	9,465,752.5	9,874,878	10,335,662	10,422,230	10,410,381	10,655,147	10,865,503	11,064,919
Mining and quarrying	506,418	524,036	541,333	582,859	651,304	656,145	659,297	667,324	674,546	689,582
Manufacturing	5,792,050	5,964,506	6,032,752	6,342,875	6,660,171	6,698,477	6,668,621	6,882,053	7,022,228	7,117,983
Electricity, gas, steam and air conditioning supply	2,499,804	2,604,394	2,659,760	2,699,346	2,761,150	2,800,679	2,811,600	2,833,961	2,896,294	2,982,295
Water supply; sewerage, waste management and remediation activities	217,719	221,249	231,908	249,797	263,037	266,928	270,863	271,809	272,435	275,059
Service	23,078,172	23,666,100	23,803,595	24,438,269	24,955,580	25,360,868	25,104,720	25,329,868	26,047,178	26,485,010
Construction	1,058,736	1,116,306	1,171,843	1,196,062	1,270,358	1,305,233	1,321,709	1,350,575	1,357,417	1,370,072
Wholesale and retail trade; repair of motor vehicles and motorcycles	2,368,457	2,432,955	2,429,222	2,585,968	2,678,410	2,710,935	2,626,159	2,665,535	2,723,794	2,767,759
Transportation and storage	6,437,102	6,709,383	6,624,069	7,108,062	7,305,826	7,273,137	7,127,001	7,065,596	7,436,993	7,622,816
Accommodation and food service activities	1,188,327	1,235,867	1,264,687	1,235,332	1,336,309	1,403,678	1,267,068	1,248,399	1,329,595	1,396,532
Information and communication	653,865	708,234	691,888	729,760	745,115	752,848	782,579	795,297	818,093	835,467
Financial and insurance activities	425,852	439,883	441,526	481,029	502,445	511,961	530,260	541,700	561,028	576,200
Real estate activities	7,487,026	7,459,345	7,572,007	7,346,167	7,228,129	7,347,506	7,355,980	7,487,509	7,570,477	7,619,153
Professional, scientific and technical activities	17,228	18,425	19,322	19,164	20,300	20,772	20,286	20,382	20,992	21,425
Administrative and support service activities	25,073	27,720	28,108	29,979	32,343	32,676	29,984	30,181	30,830	31,351
Public administration and defence; compulsory social security	532,271	552,832	537,165	584,212	601,584	615,187	630,011	646,296	656,431	665,906
Education	686,447	705,199	725,201	765,562	802,294	863,293	873,374	881,182	896,782	908,329
Human health and social work activities	1,358,639	1,416,074	1,428,475	1,469,723	1,497,157	1,542,088	1,608,183	1,658,635	1,689,459	1,704,947
Arts, entertainment and recreation	21,651	22,425	22,237	21,802	24,676	24,981	23,475	23,627	24,182	24,563
Other service activities	817,498	821,452	847,845	865,448	910,632	956,573	908,652	914,954	931,106	940,490
Activities of households as employers	0	0	0	0	0	0	0	0	0	0
TOTAL	34,856,662	35,830,057	36,102,369	37,081,163	38,265,876	38,816,290	38,462,472	38,983,277	40,025,522	40,754,563

TABLE 7-1 GROWTH RATE OF NET CAPITAL STOCK OF THAILAND AT CURRENT REPLACEMENT COST

(Unit - Percent)

Sector	2014	2015	2016	2017	2018	2019	2020r	2021r	2022r	2023p
Agriculture	4.4	3.2	-0.6	-2.3	7.5	2.0	-2.8	1.7	3.8	2.9
Agriculture, forestry and fishing	4.4	3.2	-0.6	-2.3	7.5	2.0	-2.8	1.7	3.8	2.9
None Agriculture	2.5	2.8	0.9	3.1	2.9	1.4	-0.7	1.3	2.6	1.7
Industrial	2.8	3.3	1.6	4.3	4.7	0.8	-0.1	2.4	2.0	1.8
Mining and quarrying	4.8	3.5	3.3	7.7	11.7	0.7	0.5	1.2	1.1	2.2
Manufacturing	3.1	3.0	1.1	5.1	5.0	0.6	-0.4	3.2	2.0	1.4
Electricity, gas, steam and air conditioning supply	1.6	4.2	2.1	1.5	2.3	1.4	0.4	0.8	2.2	3.0
Water supply; sewerage, waste management and remediation activities	1.6	1.6	4.8	7.7	5.3	1.5	1.5	0.3	0.2	1.0
Service	2.4	2.5	0.6	2.7	2.1	1.6	-1.0	0.9	2.8	1.7
Construction	3.9	5.4	5.0	2.1	6.2	2.7	1.3	2.2	0.5	0.9
Wholesale and retail trade; repair of motor vehicles and motorcycles	2.4	2.7	-0.2	6.5	3.6	1.2	-3.1	1.5	2.2	1.6
Transportation and storage	2.1	4.2	-1.3	7.3	2.8	-0.4	-2.0	-0.9	5.3	2.5
Accommodation and food service activities	3.3	4.0	2.3	-2.3	8.2	5.0	-9.7	-1.5	6.5	5.0
Information and communication	15.1	8.3	-2.3	5.5	2.1	1.0	3.9	1.6	2.9	2.1
Financial and insurance activities	2.4	3.3	0.4	8.9	4.5	1.9	3.6	2.2	3.6	2.7
Real estate activities	1.7	-0.4	1.5	-3.0	-1.6	1.7	0.1	1.8	1.1	0.6
Professional, scientific and technical activities	4.0	7.0	4.9	-0.8	5.9	2.3	-2.3	0.5	3.0	2.1
Administrative and support service activities	8.0	10.6	1.4	6.7	7.9	1.0	-8.2	0.7	2.1	1.7
Public administration and defence; compulsory social security	0.5	3.9	-2.8	8.8	3.0	2.3	2.4	2.6	1.6	1.4
Education	2.6	2.7	2.8	5.6	4.8	7.6	1.2	0.9	1.8	1.3
Human health and social work activities	3.0	4.2	0.9	2.9	1.9	3.0	4.3	3.1	1.9	0.9
Arts, entertainment and recreation	1.0	3.6	-0.8	-2.0	13.2	1.2	-6.0	0.6	2.3	1.6
Other service activities	-1.6	0.5	3.2	2.1	5.2	5.0	-5.0	0.7	1.8	1.0
Activities of households as employers	-	-	-	-	-	-	-	-	-	-
TOTAL	2.7	2.8	0.8	2.7	3.2	1.4	-0.9	1.4	2.7	1.8

TABLE 8 NET CAPITAL STOCK OF THAILAND : CHAIN VOLUME MEASURES (reference year = 2002)

(Unit - Millions of Baht)

Sector	2014	2015	2016	2017	2018	2019	2020r	2021r	2022r	2023p
Agriculture	2,055,790	2,060,838	2,142,999	2,192,830	2,261,670	2,284,280	2,256,496	2,288,439	2,320,974	2,356,868
Agriculture, forestry and fishing	2,055,790	2,060,838	2,142,999	2,192,830	2,261,670	2,284,280	2,256,496	2,288,439	2,320,974	2,356,868
None Agriculture	22,226,220	22,643,724	23,299,735	23,755,779	24,493,526	24,825,021	24,600,406	24,735,021	24,864,919	24,984,499
Industrial	6,415,724.0	6,458,989.0	6,670,825.0	6,881,973	7,162,671	7,165,559	7,148,404	7,270,207	7,271,300	7,334,358
Mining and quarrying	444,284	448,659	445,383	461,334	472,690	474,427	474,550	479,355	481,026	490,942
Manufacturing	3,905,399	3,970,544	4,148,922	4,277,856	4,499,998	4,497,759	4,471,593	4,596,251	4,608,156	4,644,952
Electricity, gas, steam and air conditioning supply	1,869,038	1,837,263	1,860,742	1,917,633	1,953,973	1,956,898	1,966,280	1,957,254	1,948,607	1,969,789
Water supply; sewerage, waste management and remediation activities	182,620	184,042	190,752	200,154	206,480	207,228	207,553	205,797	201,232	195,889
Service	15,792,574	16,163,514	16,607,447	16,852,728	17,309,825	17,638,232	17,430,411	17,442,184	17,571,212	17,627,400
Construction	710,387	775,121	856,972	868,814	890,837	911,034	922,070	934,035	923,111	921,489
Wholesale and retail trade; repair of motor vehicles and motorcycles	1,529,372	1,586,417	1,612,072	1,633,350	1,689,669	1,720,557	1,636,132	1,640,050	1,644,612	1,658,216
Transportation and storage	4,627,382	4,722,352	4,659,761	4,894,251	4,919,230	4,882,277	4,700,324	4,655,940	4,782,959	4,858,539
Accommodation and food service activities	798,503	851,397	912,339	897,015	907,371	949,329	855,017	837,215	868,780	891,342
Information and communication	423,085	446,231	474,485	519,212	524,303	528,345	529,049	530,528	534,838	540,426
Financial and insurance activities	312,770	306,001	319,436	333,408	339,144	347,473	361,932	364,534	370,604	378,248
Real estate activities	5,103,429	5,071,539	5,165,084	5,052,763	5,343,613	5,474,288	5,598,359	5,631,175	5,578,655	5,483,882
Professional, scientific and technical activities	13,096	13,113	13,431	13,431	13,856	13,996	13,620	13,495	13,606	13,710
Administrative and support service activities	19,840	20,911	21,117	22,424	23,734	25,698	25,994	25,905	25,935	26,253
Public administration and defence; compulsory social security	349,074	337,793	336,566	348,979	345,105	358,597	377,333	381,638	380,314	383,527
Education	397,969	408,550	437,261	462,680	476,255	514,377	513,558	512,216	513,068	516,890
Human health and social work activities	763,067	841,941	913,864	922,809	931,067	950,377	964,760	983,989	986,530	987,067
Arts, entertainment and recreation	17,778	18,887	19,777	18,869	20,400	20,704	20,067	20,090	20,283	20,578
Other service activities	606,146	622,783	714,666	710,173	727,624	785,080	774,342	775,519	780,900	785,559
Activities of households as employers	0	0	0	0	0	0	0	0	0	0
TOTAL	24,269,494	24,693,972	25,430,782	25,935,881	26,741,986	27,096,558	26,844,795	27,009,555	27,170,022	27,323,204

TABLE 8-1 GROWTH RATE OF NET CAPITAL STOCK OF THAILAND : CHAIN VOLUME MEASURES (reference year = 2002)

(Unit - Percent)

Sector	2014	2015	2016	2017	2018	2019	2020r	2021r	2022r	2023p
Agriculture	0.6	0.2	4.0	2.3	3.1	1.0	-1.2	1.4	1.4	1.5
Agriculture, forestry and fishing	0.6	0.2	4.0	2.3	3.1	1.0	-1.2	1.4	1.4	1.5
None Agriculture	1.4	1.9	2.9	2.0	3.1	1.4	-0.9	0.5	0.5	0.5
Industrial	-0.5	0.7	3.3	3.2	4.1	0.0	-0.2	1.7	0.0	0.9
Mining and quarrying	4.3	1.0	-0.7	3.6	2.5	0.4	0.0	1.0	0.3	2.1
Manufacturing	-1.8	1.7	4.5	3.1	5.2	-0.0	-0.6	2.8	0.3	0.8
Electricity, gas, steam and air conditioning supply	1.4	-1.7	1.3	3.1	1.9	0.1	0.5	-0.5	-0.4	1.1
Water supply; sewerage, waste management and remediation activities	1.0	0.8	3.6	4.9	3.2	0.4	0.2	-0.8	-2.2	-2.7
Service	2.2	2.3	2.7	1.5	2.7	1.9	-1.2	0.1	0.7	0.3
Construction	-0.6	9.1	10.6	1.4	2.5	2.3	1.2	1.3	-1.2	-0.2
Wholesale and retail trade; repair of motor vehicles and motorcycles	-2.6	3.7	1.6	1.3	3.4	1.8	-4.9	0.2	0.3	0.8
Transportation and storage	0.8	2.1	-1.3	5.0	0.5	-0.8	-3.7	-0.9	2.7	1.6
Accommodation and food service activities	2.4	6.6	7.2	-1.7	1.2	4.6	-9.9	-2.1	3.8	2.6
Information and communication	9.8	5.5	6.3	9.4	1.0	0.8	0.1	0.3	0.8	1.0
Financial and insurance activities	-0.2	-2.2	4.4	4.4	1.7	2.5	4.2	0.7	1.7	2.1
Real estate activities	8.0	-0.6	1.8	-2.2	5.8	2.4	2.3	0.6	-0.9	-1.7
Professional, scientific and technical activities	1.5	0.1	2.4	0.0	3.2	1.0	-2.7	-0.9	0.8	0.8
Administrative and support service activities	1.2	5.4	1.0	6.2	5.8	8.3	1.2	-0.3	0.1	1.2
Public administration and defence; compulsory social security	-2.7	-3.2	-0.4	3.7	-1.1	3.9	5.2	1.1	-0.3	0.8
Education	-2.5	2.7	7.0	5.8	2.9	8.0	-0.2	-0.3	0.2	0.7
Human health and social work activities	-5.3	10.3	8.5	1.0	0.9	2.1	1.5	2.0	0.3	0.1
Arts, entertainment and recreation	-5.3	6.2	4.7	-4.6	8.1	1.5	-3.1	0.1	1.0	1.5
Other service activities	-7.5	2.7	14.8	-0.6	2.5	7.9	-1.4	0.2	0.7	0.6
Activities of households as employers	-	-	-	-	-	-	-	-	-	-
TOTAL	1.4	1.7	3.0	2.0	3.1	1.3	-0.9	0.6	0.6	0.6

TABLE 9 NET CAPITAL STOCK OF PRIVATE SECTOR AT CURRENT REPLACEMENT COST

(Unit - Millions of Baht)

Sector	2014	2015	2016	2017	2018	2019	2020r	2021r	2022r	2023p
Agriculture	1,252,324	1,292,173	1,351,975	1,497,275	1,609,337	1,642,170	1,476,633	1,481,142	1,559,533	1,627,954
Agriculture, forestry and fishing	1,252,324	1,292,173	1,351,975	1,497,275	1,609,337	1,642,170	1,476,633	1,481,142	1,559,533	1,627,954
None Agriculture	22,790,907	23,310,991	23,437,218	24,540,895	25,322,247	25,851,490	25,351,666	25,589,259	26,348,370	26,868,656
Industrial	6,743,254.1	6,986,143.4	7,072,019.6	7,483,113	7,941,903	8,057,807	7,969,937	8,181,116	8,359,613	8,521,037
Mining and quarrying	424,160	439,582	454,590	493,705	551,681	549,220	551,199	553,879	559,563	572,725
Manufacturing	5,478,527	5,636,816	5,702,097	6,017,613	6,391,899	6,495,647	6,446,689	6,648,063	6,791,196	6,885,225
Electricity, gas, steam and air conditioning supply	768,570	836,581	838,643	886,692	911,340	924,670	887,895	896,135	924,535	978,232
Water supply; sewerage, waste management and remediation activities	71,997	73,165	76,690	85,103	86,984	88,270	84,154	83,038	84,319	84,856
Service	16,047,653	16,324,847	16,365,198	17,057,782	17,380,343	17,793,683	17,381,729	17,408,144	17,988,757	18,347,619
Construction	537,912	559,716	608,761	645,263	700,158	745,484	663,432	650,423	661,266	670,171
Wholesale and retail trade; repair of motor vehicles and motorcycles	2,347,046	2,410,888	2,407,650	2,564,349	2,656,019	2,693,694	2,609,614	2,648,476	2,706,471	2,750,433
Transportation and storage	2,805,354	2,875,642	2,774,226	3,152,354	3,240,061	3,298,295	3,235,658	3,193,649	3,454,409	3,586,535
Accommodation and food service activities	778,604	812,718	838,449	827,623	908,637	954,445	824,355	803,969	884,261	952,518
Information and communication	387,284	417,681	434,070	464,784	474,564	479,722	490,677	490,619	512,863	529,686
Financial and insurance activities	347,291	358,615	364,140	402,453	420,371	428,537	440,646	447,796	466,018	482,020
Real estate activities	6,819,258	6,793,449	6,931,264	6,803,358	6,701,271	6,804,599	6,753,525	6,810,638	6,897,537	6,946,610
Professional, scientific and technical activities	11,328	12,116	12,706	12,794	13,349	13,659	13,339	13,382	13,804	14,110
Administrative and support service activities	5,549	7,083	7,694	8,184	8,829	8,920	7,586	7,633	7,769	7,903
Public administration and defence; compulsory social security	0	0	0	0	0	0	0	0	0	0
Education	457,208	470,798	500,200	555,002	581,631	625,853	624,725	622,555	633,092	640,335
Human health and social work activities	918,793	969,034	880,084	941,960	959,543	988,864	1,014,345	1,019,563	1,037,176	1,044,979
Arts, entertainment and recreation	12,044	10,850	8,487	9,671	10,946	11,081	10,389	10,480	10,968	11,166
Other service activities	619,982	626,259	597,468	669,987	704,966	740,531	693,438	688,960	703,125	711,151
Activities of households as employers	0	0	0	0	0	0	0	0	0	0
TOTAL	24,043,230	24,603,163	24,789,192	26,038,170	26,931,583	27,493,660	26,828,299	27,070,401	27,907,903	28,496,611

TABLE 9-1 GROWTH RATE OF NET CAPITAL STOCK OF PRIVATE SECTOR AT CURRENT REPLACEMENT COST

(Unit - Percent)

Sector	2014	2015	2016	2017	2018	2019	2020r	2021r	2022r	2023p
Agriculture	5.2	3.2	4.6	10.7	7.5	2.0	-10.1	0.3	5.3	4.4
Agriculture, forestry and fishing	5.2	3.2	4.6	10.7	7.5	2.0	-10.1	0.3	5.3	4.4
None Agriculture	2.5	2.3	0.5	4.7	3.2	2.1	-1.9	0.9	3.0	2.0
Industrial	3.1	3.6	1.2	5.8	6.1	1.5	-1.1	2.6	2.2	1.9
Mining and quarrying	5.0	3.6	3.4	8.6	11.7	-0.4	0.4	0.5	1.0	2.4
Manufacturing	2.9	2.9	1.2	5.5	6.2	1.6	-0.8	3.1	2.2	1.4
Electricity, gas, steam and air conditioning supply	3.1	8.8	0.2	5.7	2.8	1.5	-4.0	0.9	3.2	5.8
Water supply; sewerage, waste management and remediation activities	1.6	1.6	4.8	11.0	2.2	1.5	-4.7	-1.3	1.5	0.6
Service	2.2	1.7	0.2	4.2	1.9	2.4	-2.3	0.2	3.3	2.0
Construction	2.4	4.1	8.8	6.0	8.5	6.5	-11.0	-2.0	1.7	1.3
Wholesale and retail trade; repair of motor vehicles and motorcycles	2.4	2.7	-0.1	6.5	3.6	1.4	-3.1	1.5	2.2	1.6
Transportation and storage	2.2	2.5	-3.5	13.6	2.8	1.8	-1.9	-1.3	8.2	3.8
Accommodation and food service activities	3.4	4.4	3.2	-1.3	9.8	5.0	-13.6	-2.5	10.0	7.7
Information and communication	15.8	7.8	3.9	7.1	2.1	1.1	2.3	-0.0	4.5	3.3
Financial and insurance activities	2.5	3.3	1.5	10.5	4.5	1.9	2.8	1.6	4.1	3.4
Real estate activities	1.7	-0.4	2.0	-1.8	-1.5	1.5	-0.8	0.8	1.3	0.7
Professional, scientific and technical activities	4.0	7.0	4.9	0.7	4.3	2.3	-2.3	0.3	3.2	2.2
Administrative and support service activities	25.7	27.6	8.6	6.4	7.9	1.0	-15.0	0.6	1.8	1.7
Public administration and defence; compulsory social security	-	-	-	-	-	-	-	-	-	-
Education	3.4	3.0	6.2	11.0	4.8	7.6	-0.2	-0.3	1.7	1.1
Human health and social work activities	3.5	5.5	-9.2	7.0	1.9	3.1	2.6	0.5	1.7	0.8
Arts, entertainment and recreation	-0.6	-9.9	-21.8	13.9	13.2	1.2	-6.2	0.9	4.7	1.8
Other service activities	-4.2	1.0	-4.6	12.1	5.2	5.0	-6.4	-0.6	2.1	1.1
Activities of households as employers	-	-	-	-	-	-	-	-	-	-
TOTAL	2.6	2.3	0.8	5.0	3.4	2.1	-2.4	0.9	3.1	2.1

TABLE 10 NET CAPITAL STOCK OF PRIVATE SECTOR : CHAIN VOLUME MEASURES (reference year = 2002)

(Unit - Millions of Baht)

Sector	2014	2015	2016	2017	2018	2019	2020r	2021r	2022r	2023p
Agriculture	931,951	934,445	1,022,681	1,186,145	1,223,608	1,236,708	1,130,504	1,130,488	1,162,807	1,197,288
Agriculture, forestry and fishing	931,951	934,445	1,022,681	1,186,145	1,223,608	1,236,708	1,130,504	1,130,488	1,162,807	1,197,288
None Agriculture	15,648,566	15,934,153	16,366,528	16,934,812	17,645,585	18,022,893	17,676,963	17,702,004	17,875,817	18,005,678
Industrial	4,708,251.0	4,786,987.0	4,957,660.0	5,159,199	5,448,268	5,490,004	5,422,231	5,538,790	5,559,208	5,626,492
Mining and quarrying	372,117	376,352	374,013	390,766	400,385	397,112	396,741	397,863	399,029	407,746
Manufacturing	3,694,001	3,752,404	3,921,521	4,058,489	4,318,740	4,361,569	4,322,781	4,439,981	4,456,550	4,493,065
Electricity, gas, steam and air conditioning supply	574,639	590,163	586,706	629,911	644,924	646,087	620,945	618,909	622,021	646,117
Water supply; sewerage, waste management and remediation activities	60,391	60,861	63,080	68,191	68,281	68,528	64,484	62,870	62,280	60,431
Service	10,920,342	11,126,646	11,388,007	11,754,244	12,175,088	12,511,764	12,232,808	12,137,508	12,291,666	12,353,322
Construction	360,926	388,645	445,188	468,716	490,984	520,336	462,832	449,821	449,693	450,746
Wholesale and retail trade; repair of motor vehicles and motorcycles	1,515,549	1,572,031	1,597,760	1,619,698	1,675,546	1,709,617	1,625,827	1,629,556	1,634,155	1,647,838
Transportation and storage	2,016,659	2,024,000	1,951,554	2,170,551	2,181,629	2,214,063	2,133,946	2,104,484	2,221,636	2,285,942
Accommodation and food service activities	523,190	559,890	604,856	600,967	616,979	645,509	556,277	539,170	577,795	607,953
Information and communication	250,594	263,166	297,679	330,688	333,931	336,669	331,716	327,285	335,292	342,632
Financial and insurance activities	255,071	249,468	263,449	278,947	283,746	290,853	300,766	301,343	307,843	316,424
Real estate activities	4,648,256	4,618,804	4,728,016	4,679,416	4,954,119	5,069,795	5,139,855	5,122,118	5,082,770	4,999,822
Professional, scientific and technical activities	8,610	8,621	8,830	8,964	9,109	9,201	8,954	8,858	8,945	9,027
Administrative and support service activities	4,391	5,343	5,780	6,121	6,479	7,015	6,576	6,551	6,535	6,618
Public administration and defence; compulsory social security	0	0	0	0	0	0	0	0	0	0
Education	265,067	272,752	301,596	335,424	345,265	372,902	367,347	361,879	362,204	364,385
Human health and social work activities	516,034	576,151	563,034	591,440	596,732	609,431	608,514	604,859	605,642	604,984
Arts, entertainment and recreation	9,889	9,138	7,548	8,369	9,048	9,183	8,880	8,910	9,199	9,353
Other service activities	459,696	474,798	503,619	549,782	563,292	607,772	590,941	583,967	589,698	594,002
Activities of households as employers	0	0	0	0	0	0	0	0	0	0
TOTAL	16,578,382	16,867,490	17,384,804	18,107,073	18,856,231	19,247,396	18,801,303	18,826,456	19,030,644	19,192,704

TABLE 10-1 GROWTH RATE OF NET CAPITAL STOCK OF PRIVATE SECTOR : CHAIN VOLUME MEASURES (reference year = 2002)

(Unit - Percent)

Sector	2014	2015	2016	2017	2018	2019	2020r	2021r	2022r	2023p
Agriculture	1.4	0.3	9.4	16.0	3.2	1.1	-8.6	-0.0	2.9	3.0
Agriculture, forestry and fishing	1.4	0.3	9.4	16.0	3.2	1.1	-8.6	-0.0	2.9	3.0
None Agriculture	1.6	1.8	2.7	3.5	4.2	2.1	-1.9	0.1	1.0	0.7
Industrial	-1.0	1.7	3.6	4.1	5.6	0.8	-1.2	2.1	0.4	1.2
Mining and quarrying	4.5	1.1	-0.6	4.5	2.5	-0.8	-0.1	0.3	0.3	2.2
Manufacturing	-2.0	1.6	4.5	3.5	6.4	1.0	-0.9	2.7	0.4	0.8
Electricity, gas, steam and air conditioning supply	2.8	2.7	-0.6	7.4	2.4	0.2	-3.9	-0.3	0.5	3.9
Water supply; sewerage, waste management and remediation activities	1.0	0.8	3.6	8.1	0.1	0.4	-5.9	-2.5	-0.9	-3.0
Service	2.7	1.9	2.3	3.2	3.6	2.8	-2.2	-0.8	1.3	0.5
Construction	-2.1	7.7	14.5	5.3	4.8	6.0	-11.1	-2.8	-0.0	0.2
Wholesale and retail trade; repair of motor vehicles and motorcycles	-2.6	3.7	1.6	1.4	3.4	2.0	-4.9	0.2	0.3	0.8
Transportation and storage	0.8	0.4	-3.6	11.2	0.5	1.5	-3.6	-1.4	5.6	2.9
Accommodation and food service activities	2.5	7.0	8.0	-0.6	2.7	4.6	-13.8	-3.1	7.2	5.2
Information and communication	10.5	5.0	13.1	11.1	1.0	0.8	-1.5	-1.3	2.4	2.2
Financial and insurance activities	-0.1	-2.2	5.6	5.9	1.7	2.5	3.4	0.2	2.2	2.8
Real estate activities	8.0	-0.6	2.4	-1.0	5.9	2.3	1.4	-0.3	-0.8	-1.6
Professional, scientific and technical activities	1.5	0.1	2.4	1.5	1.6	1.0	-2.7	-1.1	1.0	0.9
Administrative and support service activities	17.7	21.7	8.2	5.9	5.8	8.3	-6.3	-0.4	-0.2	1.3
Public administration and defence; compulsory social security	-	-	-	-	-	-	-	-	-	-
Education	-1.8	2.9	10.6	11.2	2.9	8.0	-1.5	-1.5	0.1	0.6
Human health and social work activities	-4.8	11.6	-2.3	5.0	0.9	2.1	-0.2	-0.6	0.1	-0.1
Arts, entertainment and recreation	-6.8	-7.6	-17.4	10.9	8.1	1.5	-3.3	0.3	3.2	1.7
Other service activities	-10.0	3.3	6.1	9.2	2.5	7.9	-2.8	-1.2	1.0	0.7
Activities of households as employers	-	-	-	-	-	-	-	-	-	-
TOTAL	1.6	1.7	3.1	4.2	4.1	2.1	-2.3	0.1	1.1	0.9

TABLE 11 NET CAPITAL STOCK OF PUBLIC SECTOR AT CURRENT REPLACEMENT COST

(Unit - Millions of Baht)

Sector	2014	2015	2016	2017	2018	2019	2020r	2021r	2022r	2023p
Agriculture	1,510,175	1,557,600	1,481,047	1,270,741	1,365,298	1,391,022	1,470,738	1,517,121	1,553,307	1,576,680
Agriculture, forestry and fishing	1,510,175	1,557,600	1,481,047	1,270,741	1,365,298	1,391,022	1,470,738	1,517,121	1,553,307	1,576,680
None Agriculture	9,303,256	9,669,294	9,832,130	9,772,252	9,968,995	9,931,607	10,163,435	10,395,755	10,564,311	10,681,272
Industrial	2,272,736.5	2,328,040.8	2,393,733.0	2,391,765	2,393,759	2,364,423	2,440,444	2,474,032	2,505,890	2,543,881
Mining and quarrying	82,257	84,454	86,743	89,154	99,623	106,925	108,098	113,445	114,983	116,857
Manufacturing	313,524	327,690	330,655	325,263	268,272	202,830	221,932	233,990	231,031	232,758
Electricity, gas, steam and air conditioning supply	1,731,234	1,767,813	1,821,116	1,812,654	1,849,810	1,876,010	1,923,705	1,937,826	1,971,759	2,004,063
Water supply; sewerage, waste management and remediation activities	145,721	148,084	155,219	164,694	176,053	178,658	186,709	188,771	188,117	190,203
Service	7,030,519	7,341,253	7,438,397	7,380,487	7,575,236	7,567,184	7,722,991	7,921,724	8,058,421	8,137,391
Construction	520,824	556,590	563,082	550,798	570,200	559,749	658,277	700,152	696,151	699,901
Wholesale and retail trade; repair of motor vehicles and motorcycles	21,411	22,067	21,571	21,619	22,392	17,242	16,545	17,059	17,323	17,326
Transportation and storage	3,631,749	3,833,742	3,849,843	3,955,707	4,065,765	3,974,842	3,891,343	3,871,947	3,982,584	4,036,281
Accommodation and food service activities	409,723	423,148	426,237	407,709	427,672	449,233	442,714	444,430	445,335	444,013
Information and communication	266,581	290,553	257,818	264,976	270,551	273,126	291,902	304,678	305,231	305,781
Financial and insurance activities	78,561	81,268	77,386	78,576	82,074	83,424	89,614	93,904	95,010	94,180
Real estate activities	667,768	665,896	640,743	542,808	526,858	542,907	602,455	676,871	672,940	672,543
Professional, scientific and technical activities	5,899	6,309	6,617	6,371	6,951	7,113	6,946	7,000	7,188	7,315
Administrative and support service activities	19,525	20,637	20,414	21,795	23,514	23,756	22,398	22,549	23,061	23,447
Public administration and defence; compulsory social security	532,271	552,832	537,165	584,212	601,584	615,187	630,011	646,296	656,431	665,906
Education	229,239	234,401	225,001	210,560	220,663	237,440	248,650	258,627	263,690	267,993
Human health and social work activities	439,846	447,041	548,392	527,763	537,614	553,224	593,838	639,072	652,283	659,968
Arts, entertainment and recreation	9,607	11,574	13,749	12,131	13,730	13,900	13,085	13,146	13,213	13,397
Other service activities	197,516	195,193	250,377	195,461	205,666	216,042	215,214	225,994	227,981	229,338
Activities of households as employers	0	0	0	0	0	0	0	0	0	0
TOTAL	10,813,431	11,226,894	11,313,177	11,042,993	11,334,293	11,322,629	11,634,173	11,912,876	12,117,619	12,257,952

TABLE 11-1 GROWTH RATE OF NET CAPITAL STOCK OF PUBLIC SECTOR AT CURRENT REPLACEMENT COST

(Unit - Percent)

Sector	2014	2015	2016	2017	2018	2019	2020r	2021r	2022r	2023p
Agriculture	3.8	3.1	-4.9	-14.2	7.4	1.9	5.7	3.2	2.4	1.5
Agriculture, forestry and fishing	3.8	3.1	-4.9	-14.2	7.4	1.9	5.7	3.2	2.4	1.5
None Agriculture	2.6	3.9	1.7	-0.6	2.0	-0.4	2.3	2.3	1.6	1.1
Industrial	1.9	2.4	2.8	-0.1	0.1	-1.2	3.2	1.4	1.3	1.5
Mining and quarrying	3.8	2.7	2.7	2.8	11.7	7.3	1.1	4.9	1.4	1.6
Manufacturing	6.9	4.5	0.9	-1.6	-17.5	-24.4	9.4	5.4	-1.3	0.7
Electricity, gas, steam and air conditioning supply	1.0	2.1	3.0	-0.5	2.0	1.4	2.5	0.7	1.8	1.6
Water supply; sewerage, waste management and remediation activities	1.6	1.6	4.8	6.1	6.9	1.5	4.5	1.1	-0.3	1.1
Service	2.8	4.4	1.3	-0.8	2.6	-0.1	2.1	2.6	1.7	1.0
Construction	5.6	6.9	1.2	-2.2	3.5	-1.8	17.6	6.4	-0.6	0.5
Wholesale and retail trade; repair of motor vehicles and motorcycles	3.6	3.1	-2.2	0.2	3.6	-23.0	-4.0	3.1	1.5	0.0
Transportation and storage	2.1	5.6	0.4	2.7	2.8	-2.2	-2.1	-0.5	2.9	1.3
Accommodation and food service activities	3.0	3.3	0.7	-4.3	4.9	5.0	-1.5	0.4	0.2	-0.3
Information and communication	14.1	9.0	-11.3	2.8	2.1	1.0	6.9	4.4	0.2	0.2
Financial and insurance activities	2.0	3.4	-4.8	1.5	4.5	1.6	7.4	4.8	1.2	-0.9
Real estate activities	1.6	-0.3	-3.8	-15.3	-2.9	3.0	11.0	12.4	-0.6	-0.1
Professional, scientific and technical activities	4.0	7.0	4.9	-3.7	9.1	2.3	-2.3	0.8	2.7	1.8
Administrative and support service activities	3.9	5.7	-1.1	6.8	7.9	1.0	-5.7	0.7	2.3	1.7
Public administration and defence; compulsory social security	0.5	3.9	-2.8	8.8	3.0	2.3	2.4	2.6	1.6	1.4
Education	1.0	2.3	-4.0	-6.4	4.8	7.6	4.7	4.0	2.0	1.6
Human health and social work activities	1.9	1.6	22.7	-3.8	1.9	2.9	7.3	7.6	2.1	1.2
Arts, entertainment and recreation	3.1	20.5	18.8	-11.8	13.2	1.2	-5.9	0.5	0.5	1.4
Other service activities	7.6	-1.2	28.3	-21.9	5.2	5.0	-0.4	5.0	0.9	0.6
Activities of households as employers	-	-	-	-	-	-	-	-	-	-
TOTAL	2.7	3.8	0.8	-2.4	2.6	-0.1	2.8	2.4	1.7	1.2

TABLE 12 NET CAPITAL STOCK OF PUBLIC SECTOR : CHAIN VOLUME MEASURES (reference year = 2002)

(Unit - Millions of Baht)

Sector	2014	2015	2016	2017	2018	2019	2020r	2021r	2022r	2023p
Agriculture	1,123,837	1,126,390	1,120,315	1,006,683	1,038,060	1,047,569	1,125,990	1,157,948	1,158,164	1,159,577
Agriculture, forestry and fishing	1,123,837	1,126,390	1,120,315	1,006,683	1,038,060	1,047,569	1,125,990	1,157,948	1,158,164	1,159,577
None Agriculture	6,561,265	6,693,101	6,916,630	6,802,234	6,827,016	6,783,308	6,901,077	7,008,652	6,966,664	6,957,503
Industrial	1,701,009.0	1,662,115.0	1,702,380.0	1,711,001	1,699,193	1,658,966	1,711,252	1,715,501	1,695,700	1,690,997
Mining and quarrying	72,167	72,308	71,370	70,567	72,304	77,314	77,809	81,492	81,997	83,196
Manufacturing	211,399	218,141	227,402	219,368	181,260	136,192	148,814	156,272	151,608	151,890
Electricity, gas, steam and air conditioning supply	1,294,398	1,247,099	1,274,035	1,287,721	1,309,048	1,310,810	1,345,334	1,338,344	1,326,586	1,323,672
Water supply; sewerage, waste management and remediation activities	122,231	123,183	127,674	131,966	138,202	138,703	143,072	142,930	138,954	135,461
Service	4,856,109	5,021,120	5,203,414	5,081,178	5,117,053	5,112,222	5,178,366	5,280,532	5,258,053	5,253,523
Construction	349,458	386,472	411,780	400,094	399,849	390,694	459,233	484,209	473,414	470,739
Wholesale and retail trade; repair of motor vehicles and motorcycles	13,825	14,388	14,314	13,654	14,125	10,942	10,307	10,496	10,459	10,380
Transportation and storage	2,610,723	2,698,352	2,708,207	2,723,700	2,737,601	2,668,213	2,566,377	2,551,455	2,561,322	2,572,596
Accommodation and food service activities	275,317	291,511	307,487	296,052	290,396	303,824	298,744	298,050	290,991	283,395
Information and communication	172,491	183,066	176,807	188,525	190,374	191,678	197,335	203,245	199,548	197,796
Financial and insurance activities	57,700	56,534	55,988	54,463	55,400	56,622	61,168	63,194	62,764	61,827
Real estate activities	455,175	452,736	437,069	373,348	389,495	404,494	458,504	509,056	495,884	484,060
Professional, scientific and technical activities	4,484	4,490	4,599	4,465	4,745	4,793	4,664	4,635	4,660	4,682
Administrative and support service activities	15,447	15,566	15,335	16,300	17,252	18,679	19,414	19,350	19,396	19,631
Public administration and defence; compulsory social security	349,074	337,793	336,566	348,979	345,105	358,597	377,333	381,638	380,314	383,527
Education	132,903	135,799	135,666	127,257	130,991	141,476	146,212	150,337	150,864	152,505
Human health and social work activities	247,037	265,794	350,835	331,374	334,339	340,950	356,250	379,134	380,892	382,086
Arts, entertainment and recreation	7,890	9,751	12,232	10,502	11,354	11,523	11,188	11,181	11,086	11,227
Other service activities	146,450	147,985	211,047	160,392	164,333	177,309	183,401	191,551	191,201	191,556
Activities of households as employers	0	0	0	0	0	0	0	0	0	0
TOTAL	7,680,754	7,815,968	8,034,934	7,812,749	7,865,958	7,830,345	8,021,604	8,159,620	8,117,156	8,109,121

TABLE 12-1 GROWTH RATE OF NET CAPITAL STOCK OF PUBLIC SECTOR : CHAIN VOLUME MEASURES (reference year = 2002)

(Unit - Percent)

Sector	2014	2015	2016	2017	2018	2019	2020r	2021r	2022r	2023p
Agriculture	0.0	0.2	-0.5	-10.1	3.1	0.9	7.5	2.8	0.0	0.1
Agriculture, forestry and fishing	0.0	0.2	-0.5	-10.1	3.1	0.9	7.5	2.8	0.0	0.1
None Agriculture	0.9	2.0	3.3	-1.7	0.4	-0.6	1.7	1.6	-0.6	-0.1
Industrial	1.0	-2.3	2.4	0.5	-0.7	-2.4	3.2	0.2	-1.2	-0.3
Mining and quarrying	3.3	0.2	-1.3	-1.1	2.5	6.9	0.6	4.7	0.6	1.5
Manufacturing	1.8	3.2	4.2	-3.5	-17.4	-24.9	9.3	5.0	-3.0	0.2
Electricity, gas, steam and air conditioning supply	0.7	-3.7	2.2	1.1	1.7	0.1	2.6	-0.5	-0.9	-0.2
Water supply; sewerage, waste management and remediation activities	1.0	0.8	3.6	3.4	4.7	0.4	3.1	-0.1	-2.8	-2.5
Service	0.9	3.4	3.6	-2.3	0.7	-0.1	1.3	2.0	-0.4	-0.1
Construction	1.0	10.6	6.5	-2.8	-0.1	-2.3	17.5	5.4	-2.2	-0.6
Wholesale and retail trade; repair of motor vehicles and motorcycles	-1.5	4.1	-0.5	-4.6	3.4	-22.5	-5.8	1.8	-0.4	-0.8
Transportation and storage	0.8	3.4	0.4	0.6	0.5	-2.5	-3.8	-0.6	0.4	0.4
Accommodation and food service activities	2.1	5.9	5.5	-3.7	-1.9	4.6	-1.7	-0.2	-2.4	-2.6
Information and communication	8.9	6.1	-3.4	6.6	1.0	0.7	3.0	3.0	-1.8	-0.9
Financial and insurance activities	-0.6	-2.0	-1.0	-2.7	1.7	2.2	8.0	3.3	-0.7	-1.5
Real estate activities	7.8	-0.5	-3.5	-14.6	4.3	3.9	13.4	11.0	-2.6	-2.4
Professional, scientific and technical activities	1.5	0.1	2.4	-2.9	6.3	1.0	-2.7	-0.6	0.5	0.5
Administrative and support service activities	-2.7	0.8	-1.5	6.3	5.8	8.3	3.9	-0.3	0.2	1.2
Public administration and defence; compulsory social security	-2.7	-3.2	-0.4	3.7	-1.1	3.9	5.2	1.1	-0.3	0.8
Education	-4.1	2.2	-0.1	-6.2	2.9	8.0	3.3	2.8	0.4	1.1
Human health and social work activities	-6.3	7.6	32.0	-5.5	0.9	2.0	4.5	6.4	0.5	0.3
Arts, entertainment and recreation	-3.3	23.6	25.4	-14.1	8.1	1.5	-2.9	-0.1	-0.8	1.3
Other service activities	1.1	1.0	42.6	-24.0	2.5	7.9	3.4	4.4	-0.2	0.2
Activities of households as employers	-	-	-	-	-	-	-	-	-	-
TOTAL	0.8	1.8	2.8	-2.8	0.7	-0.5	2.4	1.7	-0.5	-0.1

TABLE 13 ANNUAL DEPRECIATION OF THAILAND AT CURRENT REPLACEMENT COST

(Unit - Millions of Baht)

Sector	2014	2015	2016	2017	2018	2019	2020r	2021r	2022r	2023p
Agriculture	227,351	247,261	250,197	242,872	244,372	246,642	249,240	252,220	256,313	259,575
Agriculture, forestry and fishing	227,351	247,261	250,197	242,872	244,372	246,642	249,240	252,220	256,313	259,575
None Agriculture	2,385,881	2,641,302	2,580,084	2,700,887	2,744,986	2,764,927	2,787,065	2,836,400	2,873,259	2,908,670
Industrial	818,725.7	909,897.5	896,632.9	938,613	952,123	954,826	961,776	979,893	990,965	1,006,980
Mining and quarrying	42,073	45,639	43,020	42,581	42,411	44,302	45,080	45,879	46,435	47,147
Manufacturing	459,929	528,607	510,300	534,644	540,500	545,081	549,516	561,468	565,557	573,631
Electricity, gas, steam and air conditioning supply	283,536	299,833	308,784	325,681	333,790	329,755	331,261	335,561	341,244	347,811
Water supply; sewerage, waste management and remediation activities	33,188	35,818	34,529	35,707	35,423	35,689	35,919	36,985	37,728	38,392
Service	1,567,156	1,731,405	1,683,451	1,762,274	1,792,862	1,810,101	1,825,290	1,856,506	1,882,294	1,901,689
Construction	71,080	83,768	77,267	85,934	86,063	86,923	89,227	91,863	92,958	93,838
Wholesale and retail trade; repair of motor vehicles and motorcycles	236,759	254,771	245,951	269,288	272,051	274,076	273,220	277,112	281,351	284,287
Transportation and storage	484,493	533,518	551,339	559,241	568,189	571,064	573,576	580,797	583,725	588,919
Accommodation and food service activities	114,982	133,163	119,155	125,573	126,254	128,286	129,454	130,143	131,119	131,850
Information and communication	73,171	91,279	97,079	101,619	101,973	102,868	103,734	105,908	108,422	110,243
Financial and insurance activities	45,470	48,817	50,096	52,381	53,750	54,063	55,327	56,769	57,800	58,465
Real estate activities	279,616	282,502	278,500	290,796	299,009	304,165	308,093	315,780	321,550	324,961
Professional, scientific and technical activities	1,829	2,022	1,981	2,059	2,090	2,240	2,317	2,349	2,359	2,363
Administrative and support service activities	3,397	3,755	3,962	4,120	4,479	4,505	4,437	4,484	4,517	4,546
Public administration and defence; compulsory social security	45,209	42,173	33,963	33,842	39,392	39,445	40,048	40,788	41,625	42,066
Education	53,310	60,660	59,153	63,769	65,623	66,522	67,599	68,232	69,931	70,961
Human health and social work activities	107,143	131,718	112,928	118,905	117,833	119,285	120,990	124,187	127,681	129,214
Arts, entertainment and recreation	1,568	2,022	1,981	2,354	2,389	2,370	2,359	2,388	2,418	2,440
Other service activities	49,129	61,238	50,096	52,392	53,768	54,288	54,907	55,706	56,839	57,537
Activities of households as employers	0	0	0	0	0	0	0	0	0	0
TOTAL	2,613,232	2,888,563	2,830,281	2,943,759	2,989,358	3,011,569	3,036,305	3,088,619	3,129,572	3,168,244

TABLE 13-1 GROWTH RATE OF ANNUAL DEPRECIATION OF THAILAND AT CURRENT REPLACEMENT COST

(Unit - Percent)

Sector	2014	2015	2016	2017	2018	2019	2020r	2021r	2022r	2023p
Agriculture	1.8	8.8	1.2	-2.9	0.6	0.9	1.1	1.2	1.6	1.3
Agriculture, forestry and fishing	1.8	8.8	1.2	-2.9	0.6	0.9	1.1	1.2	1.6	1.3
None Agriculture	-1.6	10.7	-2.3	4.7	1.6	0.7	0.8	1.8	1.3	1.2
Industrial	-4.1	11.1	-1.5	4.7	1.4	0.3	0.7	1.9	1.1	1.6
Mining and quarrying	3.1	8.5	-5.7	-1.0	-0.4	4.5	1.8	1.8	1.2	1.5
Manufacturing	-6.8	14.9	-3.5	4.8	1.1	0.8	0.8	2.2	0.7	1.4
Electricity, gas, steam and air conditioning supply	-0.6	5.7	3.0	5.5	2.5	-1.2	0.5	1.3	1.7	1.9
Water supply; sewerage, waste management and remediation activities	-2.1	7.9	-3.6	3.4	-0.8	0.8	0.6	3.0	2.0	1.8
Service	-0.3	10.5	-2.8	4.7	1.7	1.0	0.8	1.7	1.4	1.0
Construction	4.0	17.9	-7.8	11.2	0.1	1.0	2.7	3.0	1.2	0.9
Wholesale and retail trade; repair of motor vehicles and motorcycles	3.5	7.6	-3.5	9.5	1.0	0.7	-0.3	1.4	1.5	1.0
Transportation and storage	1.4	10.1	3.3	1.4	1.6	0.5	0.4	1.3	0.5	0.9
Accommodation and food service activities	0.3	15.8	-10.5	5.4	0.5	1.6	0.9	0.5	0.7	0.6
Information and communication	5.0	24.7	6.4	4.7	0.3	0.9	0.8	2.1	2.4	1.7
Financial and insurance activities	-0.8	7.4	2.6	4.6	2.6	0.6	2.3	2.6	1.8	1.2
Real estate activities	-11.1	1.0	-1.4	4.4	2.8	1.7	1.3	2.5	1.8	1.1
Professional, scientific and technical activities	15.1	10.5	-2.0	3.9	1.5	7.2	3.4	1.4	0.4	0.2
Administrative and support service activities	-1.3	10.5	5.5	4.0	8.7	0.6	-1.5	1.0	0.7	0.6
Public administration and defence; compulsory social security	5.4	-6.7	-19.5	-0.4	16.4	0.1	1.5	1.8	2.1	1.1
Education	3.7	13.8	-2.5	7.8	2.9	1.4	1.6	0.9	2.5	1.5
Human health and social work activities	2.9	22.9	-14.3	5.3	-0.9	1.2	1.4	2.6	2.8	1.2
Arts, entertainment and recreation	-1.3	29.0	-2.0	18.8	1.5	-0.8	-0.5	1.2	1.3	0.9
Other service activities	4.2	24.6	-18.2	4.6	2.6	1.0	1.1	1.5	2.0	1.2
Activities of households as employers	-	-	-	-	-	-	-	-	-	-
TOTAL	-1.3	10.5	-2.0	4.0	1.5	0.7	0.8	1.7	1.3	1.2

TABLE 14 ANNUAL DEPRECIATION OF THAILAND : CHAIN VOLUME MEASURES (reference year = 2002)

(Unit - Millions of Baht)

Sector	2014	2015	2016	2017	2018	2019	2020r	2021r	2022r	2023p
Agriculture	120,198	122,420	125,557	130,361	134,657	139,967	144,100	145,166	144,088	143,876
Agriculture, forestry and fishing	120,198	122,420	125,557	130,361	134,657	139,967	144,100	145,237	144,088	143,876
None Agriculture	1,591,109	1,633,183	1,674,845	1,719,494	1,763,637	1,811,584	1,836,622	1,853,653	1,839,936	1,842,192
Industrial	611,025.0	615,636.0	623,298.0	664,994	687,901	707,630	720,089	727,379	720,796	724,876
Mining and quarrying	36,731	38,140	38,455	36,342	37,581	39,452	40,182	40,813	40,715	41,371
Manufacturing	351,451	343,507	350,912	383,295	396,606	407,379	413,237	419,608	415,291	418,984
Electricity, gas, steam and air conditioning supply	188,458	197,103	197,678	207,373	214,629	220,738	225,636	225,636	223,356	223,251
Water supply; sewerage, waste management and remediation activities	27,262	28,867	27,801	27,889	28,607	29,424	30,115	30,582	30,419	30,914
Service	980,009	1,015,598	1,048,479	1,053,959	1,076,091	1,104,493	1,117,552	1,127,414	1,120,053	1,118,811
Construction	52,916	55,648	59,955	61,972	63,627	66,205	68,913	70,375	70,179	70,090
Wholesale and retail trade; repair of motor vehicles and motorcycles	175,827	184,822	185,612	194,958	200,487	208,825	208,775	209,162	208,519	209,110
Transportation and storage	304,827	319,339	331,159	331,966	335,973	339,707	341,588	345,324	338,848	339,069
Accommodation and food service activities	100,317	104,954	103,432	105,789	108,428	112,290	112,964	112,901	110,928	109,025
Information and communication	42,626	44,942	47,267	51,275	52,767	54,295	54,637	55,041	55,197	55,413
Financial and insurance activities	32,845	33,211	33,839	34,819	35,215	37,126	38,253	38,688	38,691	38,797
Real estate activities	102,420	103,058	94,016	91,057	93,084	95,736	96,686	97,838	97,543	96,570
Professional, scientific and technical activities	1,458	1,419	1,355	1,375	1,430	1,482	1,602	1,601	1,573	1,556
Administrative and support service activities	2,693	2,777	3,032	3,189	3,391	3,640	3,697	3,700	3,655	3,665
Public administration and defence; compulsory social security	23,414	22,032	21,153	21,512	22,729	22,900	23,448	23,565	23,613	23,714
Education	43,519	44,543	47,903	50,876	51,564	52,677	53,680	53,581	54,114	54,467
Human health and social work activities	67,940	71,476	80,112	80,202	82,637	85,124	88,568	89,893	90,953	91,403
Arts, entertainment and recreation	2,553	2,732	2,878	2,970	3,114	3,272	3,356	3,381	3,375	3,394
Other service activities	32,472	33,925	50,896	34,812	35,026	36,025	36,903	37,265	37,714	38,018
Activities of households as employers	0	0	0	0	0	0	0	0	0	0
TOTAL	1,712,354	1,756,449	1,801,274	1,851,140	1,899,776	1,953,326	1,982,836	2,000,917	1,986,106	1,988,102

TABLE 14-1 GROWTH RATE OF ANNUAL DEPRECIATION OF THAILAND : CHAIN VOLUME MEASURES (reference year = 2002)

(Unit - Percent)

Sector	2014	2015	2016	2017	2018	2019	2020r	2021r	2022r	2023p
Agriculture	3.1	1.8	2.6	3.8	3.3	3.9	3.0	0.7	-0.7	-0.1
Agriculture, forestry and fishing	3.1	1.8	2.6	3.8	3.3	3.9	3.0	0.8	-0.8	-0.1
None Agriculture	2.9	2.6	2.6	2.7	2.6	2.7	1.4	0.9	-0.7	0.1
Industrial	3.3	0.8	1.2	6.7	3.4	2.9	1.8	1.0	-0.9	0.6
Mining and quarrying	6.8	3.8	0.8	-5.5	3.4	5.0	1.9	1.6	-0.2	1.6
Manufacturing	3.5	-2.3	2.2	9.2	3.5	2.7	1.4	1.5	-1.0	0.9
Electricity, gas, steam and air conditioning supply	2.9	4.6	0.3	4.9	3.5	2.8	2.2	0.0	-1.0	-0.0
Water supply; sewerage, waste management and remediation activities	0.4	5.9	-3.7	0.3	2.6	2.9	2.3	1.6	-0.5	1.6
Service	2.7	3.6	3.2	0.5	2.1	2.6	1.2	0.9	-0.7	-0.1
Construction	4.3	5.2	7.7	3.4	2.7	4.1	4.1	2.1	-0.3	-0.1
Wholesale and retail trade; repair of motor vehicles and motorcycles	-4.1	5.1	0.4	5.0	2.8	4.2	-0.0	0.2	-0.3	0.3
Transportation and storage	3.9	4.8	3.7	0.2	1.2	1.1	0.6	1.1	-1.9	0.1
Accommodation and food service activities	4.7	4.6	-1.5	2.3	2.5	3.6	0.6	-0.1	-1.7	-1.7
Information and communication	0.2	5.4	5.2	8.5	2.9	2.9	0.6	0.7	0.3	0.4
Financial and insurance activities	1.8	1.1	1.9	2.9	1.1	5.4	3.0	1.1	0.0	0.3
Real estate activities	4.5	0.6	-8.8	-3.1	2.2	2.8	1.0	1.2	-0.3	-1.0
Professional, scientific and technical activities	9.1	-2.7	-4.5	1.5	4.0	3.6	8.1	-0.1	-1.7	-1.1
Administrative and support service activities	4.1	3.1	9.2	5.2	6.3	7.3	1.6	0.1	-1.2	0.3
Public administration and defence; compulsory social security	6.3	-5.9	-4.0	1.7	5.7	0.8	2.4	0.5	0.2	0.4
Education	4.0	2.4	7.5	6.2	1.4	2.2	1.9	-0.2	1.0	0.7
Human health and social work activities	0.6	5.2	12.1	0.1	3.0	3.0	4.0	1.5	1.2	0.5
Arts, entertainment and recreation	7.8	7.0	5.3	3.2	4.8	5.1	2.6	0.7	-0.2	0.6
Other service activities	8.7	4.5	50.0	-31.6	0.6	2.9	2.4	1.0	1.2	0.8
Activities of households as employers	-	-	-	-	-	-	-	-	-	-
TOTAL	3.0	2.6	2.6	2.8	2.6	2.8	1.5	0.9	-0.7	0.1

TABLE 15 ANNUAL DEPRECIATION OF PRIVATE SECTOR AT CURRENT REPLACEMENT COST

(Unit - Millions of Baht)

Sector	2014	2015	2016	2017	2018	2019	2020r	2021r	2022r	2023p
Agriculture	158,259	172,069	174,612	169,500	170,792	189,273	192,338	194,209	197,586	200,361
Agriculture, forestry and fishing	158,259	172,069	174,612	169,500	170,792	189,273	192,338	194,209	197,586	200,361
None Agriculture	1,766,895	2,011,738	2,042,409	2,150,174	2,163,998	2,184,636	2,200,500	2,239,494	2,268,844	2,296,870
Industrial	563,583.9	654,865.5	644,433.1	675,511	683,621	682,666	686,705	701,442	708,137	719,248
Mining and quarrying	37,390	41,016	40,026	39,618	39,446	41,400	42,110	42,897	43,433	44,131
Manufacturing	442,682	510,317	498,154	521,919	527,961	531,836	535,789	547,443	551,373	559,244
Electricity, gas, steam and air conditioning supply	72,188	89,950	91,968	99,202	101,539	94,669	93,987	95,939	97,855	100,086
Water supply; sewerage, waste management and remediation activities	11,324	13,582	14,285	14,772	14,676	14,761	14,820	15,164	15,476	15,787
Service	1,203,311	1,356,872	1,397,975	1,474,663	1,480,377	1,501,970	1,513,795	1,538,052	1,560,706	1,577,622
Construction	47,112	57,507	62,702	69,736	69,814	70,982	72,453	74,593	75,502	76,311
Wholesale and retail trade; repair of motor vehicles and motorcycles	235,291	253,319	244,968	268,211	270,854	272,952	272,073	275,920	280,130	283,064
Transportation and storage	295,250	341,825	389,466	400,640	391,255	399,345	401,377	405,849	408,012	412,232
Accommodation and food service activities	87,812	104,480	101,282	106,737	107,518	109,146	110,010	110,471	111,394	112,081
Information and communication	50,546	67,738	80,779	84,558	83,445	84,157	84,917	85,637	87,887	89,473
Financial and insurance activities	39,791	43,144	46,163	48,269	49,117	49,641	50,669	51,762	52,760	53,308
Real estate activities	267,900	267,868	269,755	281,665	290,816	293,614	297,334	304,753	310,354	313,555
Professional, scientific and technical activities	1,407	1,586	1,691	1,757	1,787	1,885	1,938	1,965	1,970	1,973
Administrative and support service activities	699	1,033	1,037	1,078	1,191	1,207	1,185	1,196	1,199	1,212
Public administration and defence; compulsory social security	0	0	0	0	0	0	0	0	0	0
Education	52,355	59,549	58,297	62,847	64,674	65,560	66,615	67,208	68,861	69,882
Human health and social work activities	83,378	105,572	95,537	100,593	100,182	102,859	104,076	106,801	109,693	110,881
Arts, entertainment and recreation	934	1,163	1,053	1,251	1,280	1,275	1,267	1,287	1,296	1,309
Other service activities	40,836	52,089	45,247	47,321	48,445	49,347	49,883	50,609	51,649	52,341
Activities of households as employers	0	0	0	0	0	0	0	0	0	0
TOTAL	1,925,154	2,183,807	2,217,021	2,319,674	2,334,790	2,373,709	2,392,439	2,433,704	2,466,430	2,497,231

TABLE 15-1 GROWTH RATE OF ANNUAL DEPRECIATION OF PRIVATE SECTOR AT CURRENT REPLACEMENT COST

(Unit - Percent)

Sector	2014	2015	2016	2017	2018	2019	2020r	2021r	2022r	2023p
Agriculture	1.3	8.7	1.5	-2.9	0.8	10.8	1.6	1.0	1.7	1.4
Agriculture, forestry and fishing	1.3	8.7	1.5	-2.9	0.8	10.8	1.6	1.0	1.7	1.4
None Agriculture	-4.3	13.9	1.5	5.3	0.6	1.0	0.7	1.8	1.3	1.2
Industrial	-7.9	16.2	-1.6	4.8	1.2	-0.1	0.6	2.1	1.0	1.6
Mining and quarrying	2.3	9.7	-2.4	-1.0	-0.4	5.0	1.7	1.9	1.2	1.6
Manufacturing	-7.5	15.3	-2.4	4.8	1.2	0.7	0.7	2.2	0.7	1.4
Electricity, gas, steam and air conditioning supply	-13.9	24.6	2.2	7.9	2.4	-6.8	-0.7	2.1	2.0	2.3
Water supply; sewerage, waste management and remediation activities	-12.4	19.9	5.2	3.4	-0.7	0.6	0.4	2.3	2.1	2.0
Service	-2.6	12.8	3.0	5.5	0.4	1.5	0.8	1.6	1.5	1.1
Construction	-0.4	22.1	9.0	11.2	0.1	1.7	2.1	3.0	1.2	1.1
Wholesale and retail trade; repair of motor vehicles and motorcycles	3.4	7.7	-3.3	9.5	1.0	0.8	-0.3	1.4	1.5	1.0
Transportation and storage	-3.7	15.8	13.9	2.9	-2.3	2.1	0.5	1.1	0.5	1.0
Accommodation and food service activities	-1.9	19.0	-3.1	5.4	0.7	1.5	0.8	0.4	0.8	0.6
Information and communication	-1.8	34.0	19.3	4.7	-1.3	0.9	0.9	0.8	2.6	1.8
Financial and insurance activities	-1.6	8.4	7.0	4.6	1.8	1.1	2.1	2.2	1.9	1.0
Real estate activities	-9.4	-0.0	0.7	4.4	3.2	1.0	1.3	2.5	1.8	1.0
Professional, scientific and technical activities	13.2	12.7	6.6	3.9	1.7	5.5	2.8	1.4	0.3	0.1
Administrative and support service activities	-0.5	47.7	0.4	4.0	10.5	1.4	-1.9	1.0	0.3	1.0
Public administration and defence; compulsory social security	-	-	-	-	-	-	-	-	-	-
Education	3.7	13.7	-2.1	7.8	2.9	1.4	1.6	0.9	2.5	1.5
Human health and social work activities	0.9	26.6	-9.5	5.3	-0.4	2.7	1.2	2.6	2.7	1.1
Arts, entertainment and recreation	12.2	24.5	-9.4	18.8	2.3	-0.4	-0.7	1.6	0.7	1.1
Other service activities	0.4	27.6	-13.1	4.6	2.4	1.9	1.1	1.5	2.1	1.3
Activities of households as employers	-	-	-	-	-	-	-	-	-	-
TOTAL	-3.9	13.4	1.5	4.6	0.7	1.7	0.8	1.7	1.3	1.2

TABLE 16 ANNUAL DEPRECIATION OF PRIVATE SECTOR : CHAIN VOLUME MEASURES (reference year = 2002)

(Unit - Millions of Baht)

Sector	2014	2015	2016	2017	2018	2019	2020r	2021r	2022r	2023p
Agriculture	78,486	81,166	83,856	87,376	90,670	94,609	95,575	96,020	95,208	94,860
Agriculture, forestry and fishing	78,486	81,166	83,856	87,376	90,670	94,609	95,575	96,020	95,208	94,860
None Agriculture	1,266,760	1,286,444	1,299,141	1,334,333	1,367,546	1,400,928	1,413,691	1,427,104	1,417,782	1,420,254
Industrial	463,825.0	462,537.0	448,785.0	485,511	501,801	513,748	525,540	532,728	527,946	532,253
Mining and quarrying	33,541	34,667	34,988	33,126	34,248	36,061	36,665	37,276	37,382	37,845
Manufacturing	345,945	339,144	346,778	378,780	392,094	402,291	408,076	414,146	410,094	414,163
Electricity, gas, steam and air conditioning supply	68,748	73,722	49,474	54,257	55,665	55,724	59,868	60,247	59,668	59,346
Water supply; sewerage, waste management and remediation activities	12,915	13,665	11,902	11,906	12,231	12,522	12,766	12,873	12,753	12,997
Service	803,975	823,365	847,229	848,798	866,558	887,952	890,455	897,211	892,351	891,310
Construction	45,242	46,156	46,476	49,271	50,618	52,734	54,595	55,822	55,680	55,574
Wholesale and retail trade; repair of motor vehicles and motorcycles	175,158	184,063	184,869	194,178	199,685	207,968	207,835	208,199	207,539	208,136
Transportation and storage	212,455	215,739	222,048	217,421	219,462	219,227	214,452	216,865	212,889	213,058
Accommodation and food service activities	84,856	87,720	87,032	89,078	91,450	94,730	95,411	95,235	93,695	92,559
Information and communication	32,260	34,776	37,773	40,946	42,006	42,589	42,239	41,912	42,067	42,164
Financial and insurance activities	29,769	30,499	31,308	32,215	32,557	34,335	35,104	35,346	35,408	35,506
Real estate activities	97,926	96,685	90,239	87,534	89,806	92,127	93,021	94,131	93,875	92,956
Professional, scientific and technical activities	1,204	1,169	1,118	1,142	1,189	1,210	1,304	1,293	1,265	1,248
Administrative and support service activities	765	932	782	821	892	941	946	940	925	929
Public administration and defence; compulsory social security	0	0	0	0	0	0	0	0	0	0
Education	42,709	43,758	47,079	50,100	50,779	51,877	52,867	52,744	53,256	53,607
Human health and social work activities	58,842	61,602	68,994	70,280	72,636	75,816	78,810	79,924	80,821	81,070
Arts, entertainment and recreation	1,871	1,801	1,234	1,267	1,337	1,402	1,429	1,447	1,433	1,441
Other service activities	27,917	29,134	41,961	29,482	29,650	30,665	31,323	31,647	32,025	32,308
Activities of households as employers	0	0	0	0	0	0	0	0	0	0
TOTAL	1,344,301	1,367,245	1,383,248	1,422,341	1,459,075	1,496,723	1,510,489	1,524,234	1,514,044	1,516,029

TABLE 16-1 GROWTH RATE OF ANNUAL DEPRECIATION OF PRIVATE SECTOR : CHAIN VOLUME MEASURES (reference year = 2002)

(Unit - Percent)

Sector	2014	2015	2016	2017	2018	2019	2020r	2021r	2022r	2023p
Agriculture	3.3	3.4	3.3	4.2	3.8	4.3	1.0	0.5	-0.8	-0.4
Agriculture, forestry and fishing	3.3	3.4	3.3	4.2	3.8	4.3	1.0	0.5	-0.8	-0.4
None Agriculture	3.3	1.6	1.0	2.7	2.5	2.4	0.9	0.9	-0.7	0.2
Industrial	3.0	-0.3	-3.0	8.2	3.4	2.4	2.3	1.4	-0.9	0.8
Mining and quarrying	7.5	3.4	0.9	-5.3	3.4	5.3	1.7	1.7	0.3	1.2
Manufacturing	3.5	-2.0	2.3	9.2	3.5	2.6	1.4	1.5	-1.0	1.0
Electricity, gas, steam and air conditioning supply	-1.2	7.2	-32.9	9.7	2.6	0.1	7.4	0.6	-1.0	-0.5
Water supply; sewerage, waste management and remediation activities	-1.6	5.8	-12.9	0.0	2.7	2.4	1.9	0.8	-0.9	1.9
Service	3.5	2.4	2.9	0.2	2.1	2.5	0.3	0.8	-0.5	-0.1
Construction	5.5	2.0	0.7	6.0	2.7	4.2	3.5	2.2	-0.3	-0.2
Wholesale and retail trade; repair of motor vehicles and motorcycles	-4.0	5.1	0.4	5.0	2.8	4.1	-0.1	0.2	-0.3	0.3
Transportation and storage	5.8	1.5	2.9	-2.1	0.9	-0.1	-2.2	1.1	-1.8	0.1
Accommodation and food service activities	6.0	3.4	-0.8	2.4	2.7	3.6	0.7	-0.2	-1.6	-1.2
Information and communication	-1.6	7.8	8.6	8.4	2.6	1.4	-0.8	-0.8	0.4	0.2
Financial and insurance activities	2.0	2.5	2.7	2.9	1.1	5.5	2.2	0.7	0.2	0.3
Real estate activities	6.9	-1.3	-6.7	-3.0	2.6	2.6	1.0	1.2	-0.3	-1.0
Professional, scientific and technical activities	9.4	-2.9	-4.4	2.1	4.1	1.8	7.8	-0.8	-2.2	-1.3
Administrative and support service activities	17.9	21.8	-16.1	5.0	8.6	5.5	0.5	-0.6	-1.6	0.4
Public administration and defence; compulsory social security	-	-	-	-	-	-	-	-	-	-
Education	4.0	2.5	7.6	6.4	1.4	2.2	1.9	-0.2	1.0	0.7
Human health and social work activities	1.7	4.7	12.0	1.9	3.4	4.4	3.9	1.4	1.1	0.3
Arts, entertainment and recreation	28.5	-3.7	-31.5	2.7	5.5	4.9	1.9	1.3	-1.0	0.6
Other service activities	5.9	4.4	44.0	-29.7	0.6	3.4	2.1	1.0	1.2	0.9
Activities of households as employers	-	-	-	-	-	-	-	-	-	-
TOTAL	3.3	1.7	1.2	2.8	2.6	2.6	0.9	0.9	-0.7	0.1

TABLE 17 ANNUAL DEPRECIATION OF PUBLIC SECTOR AT CURRENT REPLACEMENT COST

(Unit - Millions of Baht)

Sector	2014	2015	2016	2017	2018	2019r	2020r	2021r	2022r	2023p
Agriculture	69,092	75,192	75,584	73,372	73,581	57,369	56,901	58,011	58,726	59,214
Agriculture, forestry and fishing	69,092	75,192	75,584	73,372	73,581	57,369	56,901	58,011	58,726	59,214
None Agriculture	618,986	629,565	537,675	550,713	580,988	580,291	586,565	596,905	604,415	611,799
Industrial	255,141.9	255,032.0	252,199.8	263,102	268,502	272,160	275,071	278,451	282,827	287,732
Mining and quarrying	4,683	4,623	2,994	2,964	2,965	2,902	2,971	2,982	3,003	3,015
Manufacturing	17,247	18,290	12,145	12,725	12,540	13,245	13,727	14,025	14,184	14,387
Electricity, gas, steam and air conditioning supply	211,348	209,883	216,816	226,478	232,251	235,085	237,274	239,622	243,389	247,725
Water supply; sewerage, waste management and remediation activities	21,864	22,236	20,245	20,935	20,747	20,928	21,099	21,821	22,252	22,605
Service	363,844	374,533	285,475	287,611	312,486	308,131	311,495	318,454	321,588	324,067
Construction	23,968	26,261	14,565	16,199	16,249	15,942	16,775	17,270	17,456	17,527
Wholesale and retail trade; repair of motor vehicles and motorcycles	1,468	1,452	984	1,077	1,197	1,124	1,148	1,192	1,221	1,222
Transportation and storage	189,243	191,693	161,873	158,601	176,934	171,719	172,199	174,948	175,713	176,688
Accommodation and food service activities	27,170	28,683	17,873	18,836	18,736	19,140	19,444	19,672	19,726	19,770
Information and communication	22,624	23,541	16,300	17,062	18,529	18,712	18,817	20,271	20,535	20,770
Financial and insurance activities	5,679	5,673	3,933	4,112	4,633	4,422	4,659	5,007	5,040	5,157
Real estate activities	11,716	14,634	8,745	9,131	8,193	10,551	10,759	11,027	11,196	11,406
Professional, scientific and technical activities	422	436	291	302	303	355	379	384	388	390
Administrative and support service activities	2,698	2,722	2,926	3,042	3,288	3,297	3,252	3,287	3,318	3,334
Public administration and defence; compulsory social security	45,209	42,173	33,963	33,842	39,392	39,445	40,048	40,788	41,625	42,066
Education	955	1,111	856	922	949	962	985	1,023	1,071	1,079
Human health and social work activities	23,764	26,146	17,391	18,311	17,651	16,425	16,914	17,386	17,988	18,333
Arts, entertainment and recreation	634	859	928	1,103	1,109	1,095	1,092	1,101	1,123	1,130
Other service activities	8,293	9,149	4,849	5,072	5,323	4,940	5,024	5,097	5,189	5,196
Activities of households as employers	0	0	0	0	0	0	0	0	0	0
TOTAL	688,078	704,757	613,260	624,085	654,568	637,660	643,467	654,916	663,142	671,014

TABLE 17-1 GROWTH RATE OF ANNUAL DEPRECIATION OF PUBLIC SECTOR AT CURRENT REPLACEMENT COST

(Unit - Percent)

Sector	2014	2015	2016	2017	2018	2019r	2020r	2021r	2022r	2023p
Agriculture	3.1	8.8	0.5	-2.9	0.3	-22.0	-0.8	1.9	1.2	0.8
Agriculture, forestry and fishing	3.1	8.8	0.5	-2.9	0.3	-22.0	-0.8	1.9	1.2	0.8
None Agriculture	7.0	1.7	-14.6	2.4	5.5	-0.1	1.1	1.8	1.3	1.2
Industrial	5.6	-0.0	-1.1	4.3	2.1	1.4	1.1	1.2	1.6	1.7
Mining and quarrying	10.3	-1.3	-35.2	-1.0	0.0	-2.1	2.4	0.4	0.7	0.4
Manufacturing	14.2	6.0	-33.6	4.8	-1.5	5.6	3.6	2.2	1.1	1.4
Electricity, gas, steam and air conditioning supply	4.9	-0.7	3.3	4.5	2.5	1.2	0.9	1.0	1.6	1.8
Water supply; sewerage, waste management and remediation activities	4.2	1.7	-9.0	3.4	-0.9	0.9	0.8	3.4	2.0	1.6
Service	8.0	2.9	-23.8	0.7	8.6	-1.4	1.1	2.2	1.0	0.8
Construction	14.1	9.6	-44.5	11.2	0.3	-1.9	5.2	3.0	1.1	0.4
Wholesale and retail trade; repair of motor vehicles and motorcycles	12.5	-1.1	-32.3	9.5	11.1	-6.1	2.1	3.8	2.5	0.1
Transportation and storage	10.5	1.3	-15.6	-2.0	11.6	-2.9	0.3	1.6	0.4	0.6
Accommodation and food service activities	7.9	5.6	-37.7	5.4	-0.5	2.2	1.6	1.2	0.3	0.2
Information and communication	24.3	4.1	-30.8	4.7	8.6	1.0	0.6	7.7	1.3	1.1
Financial and insurance activities	5.3	-0.1	-30.7	4.6	12.7	-4.6	5.3	7.5	0.7	2.3
Real estate activities	-38.7	24.9	-40.2	4.4	-10.3	28.8	2.0	2.5	1.5	1.9
Professional, scientific and technical activities	22.0	3.2	-33.3	3.9	0.3	17.1	6.8	1.4	1.0	0.4
Administrative and support service activities	-1.6	0.9	7.5	4.0	8.1	0.3	-1.4	1.1	0.9	0.5
Public administration and defence; compulsory social security	5.4	-6.7	-19.5	-0.4	16.4	0.1	1.5	1.8	2.1	1.1
Education	8.6	16.3	-23.0	7.8	2.9	1.4	2.3	4.0	4.6	0.8
Human health and social work activities	10.9	10.0	-33.5	5.3	-3.6	-6.9	3.0	2.8	3.5	1.9
Arts, entertainment and recreation	-16.2	35.6	8.0	18.8	0.5	-1.2	-0.3	0.8	2.0	0.7
Other service activities	27.9	10.3	-47.0	4.6	5.0	-7.2	1.7	1.5	1.8	0.1
Activities of households as employers	-	-	-	-	-	-	-	-	-	-
TOTAL	6.6	2.4	-13.0	1.8	4.9	-2.6	0.9	1.8	1.3	1.2

TABLE 18 ANNUAL DEPRECIATION OF PUBLIC SECTOR : CHAIN VOLUME MEASURES (reference year = 2002)

(Unit - Millions of Baht)

Sector	2014	2015	2016	2017	2018	2019	2020r	2021r	2022r	2023p
Agriculture	42,692	41,950	42,304	43,559	44,518	45,858	50,135	50,970	50,768	51,066
Agriculture, forestry and fishing	42,692	41,950	42,304	43,559	44,518	45,858	50,135	50,970	50,768	51,066
None Agriculture	324,001	342,654	368,519	377,741	388,591	403,175	415,665	418,977	414,511	414,214
Industrial	145,272.0	149,681.0	167,755.0	172,574	178,915	186,266	187,049	187,093	185,365	185,256
Mining and quarrying	3,231	3,479	3,477	3,206	3,325	3,351	3,496	3,503	3,461	3,471
Manufacturing	6,684	6,028	5,998	6,552	6,666	7,172	7,275	7,393	7,172	6,948
Electricity, gas, steam and air conditioning supply	119,474	123,873	141,850	145,941	151,625	157,758	157,943	157,546	156,192	156,159
Water supply; sewerage, waste management and remediation activities	14,854	15,734	16,038	16,121	16,519	17,047	17,496	17,854	17,808	18,062
Service	177,644	191,262	199,804	204,150	208,516	215,705	227,489	230,855	228,107	227,918
Construction	8,586	9,559	11,774	10,827	11,087	11,475	12,231	12,424	12,376	12,394
Wholesale and retail trade; repair of motor vehicles and motorcycles	661	728	718	754	775	826	906	929	947	940
Transportation and storage	95,670	105,023	110,365	116,814	119,016	123,546	132,080	133,427	130,795	130,838
Accommodation and food service activities	15,966	17,347	16,675	16,987	17,248	17,838	17,825	17,945	17,500	16,703
Information and communication	9,447	9,461	9,013	9,812	10,254	11,248	12,053	12,965	12,954	13,094
Financial and insurance activities	3,132	2,873	2,761	2,841	2,899	3,046	3,181	3,372	3,313	3,321
Real estate activities	4,016	5,777	3,042	2,805	2,548	2,860	2,906	2,939	2,907	2,863
Professional, scientific and technical activities	256	251	238	232	239	274	300	300	301	302
Administrative and support service activities	1,914	1,881	2,234	2,351	2,480	2,679	2,731	2,741	2,711	2,717
Public administration and defence; compulsory social security	23,414	22,032	21,153	21,512	22,729	22,900	23,448	23,565	23,613	23,714
Education	741	717	754	692	700	714	726	748	768	770
Human health and social work activities	9,065	9,700	10,905	9,868	9,996	9,520	9,963	10,163	10,318	10,487
Arts, entertainment and recreation	748	919	1,426	1,480	1,541	1,622	1,675	1,678	1,690	1,700
Other service activities	4,451	4,675	8,610	4,392	4,437	4,333	4,565	4,585	4,645	4,647
Activities of households as employers	0	0	0	0	0	0	0	0	0	0
TOTAL	366,764	385,119	411,434	421,965	433,753	449,669	466,119	470,191	465,459	465,397

TABLE 18-1 GROWTH RATE OF ANNUAL DEPRECIATION OF PUBLIC SECTOR : CHAIN VOLUME MEASURES (reference year = 2002)

(Unit - Percent)

Sector	2014	2015	2016	2017	2018	2019	2020r	2021r	2022r	2023p
Agriculture	2.8	-1.7	0.8	3.0	2.2	3.0	9.3	1.7	-0.4	0.6
Agriculture, forestry and fishing	2.8	-1.7	0.8	3.0	2.2	3.0	9.3	1.7	-0.4	0.6
None Agriculture	1.7	5.8	7.5	2.5	2.9	3.8	3.1	0.8	-1.1	-0.1
Industrial	4.3	3.0	12.1	2.9	3.7	4.1	0.4	0.0	-0.9	-0.1
Mining and quarrying	1.4	7.7	-0.1	-7.8	3.7	0.8	4.3	0.2	-1.2	0.3
Manufacturing	3.5	-9.8	-0.5	9.2	1.7	7.6	1.4	1.6	-3.0	-3.1
Electricity, gas, steam and air conditioning supply	4.7	3.7	14.5	2.9	3.9	4.0	0.1	-0.3	-0.9	-0.0
Water supply; sewerage, waste management and remediation activities	1.6	5.9	1.9	0.5	2.5	3.2	2.6	2.0	-0.3	1.4
Service	-0.1	7.7	4.5	2.2	2.1	3.4	5.5	1.5	-1.2	-0.1
Construction	1.5	11.3	23.2	-8.0	2.4	3.5	6.6	1.6	-0.4	0.1
Wholesale and retail trade; repair of motor vehicles and motorcycles	-9.1	10.1	-1.4	5.0	2.8	6.6	9.7	2.5	1.9	-0.7
Transportation and storage	0.5	9.8	5.1	5.8	1.9	3.8	6.9	1.0	-2.0	0.0
Accommodation and food service activities	0.0	8.6	-3.9	1.9	1.5	3.4	-0.1	0.7	-2.5	-4.6
Information and communication	5.3	0.1	-4.7	8.9	4.5	9.7	7.2	7.6	-0.1	1.1
Financial and insurance activities	-0.1	-8.3	-3.9	2.9	2.0	5.1	4.4	6.0	-1.7	0.2
Real estate activities	-31.3	43.8	-47.3	-7.8	-9.2	12.2	1.6	1.1	-1.1	-1.5
Professional, scientific and technical activities	8.5	-2.0	-5.2	-2.5	3.0	14.6	9.5	0.0	0.3	0.3
Administrative and support service activities	0.6	-1.7	18.8	5.2	5.5	8.0	1.9	0.4	-1.1	0.2
Public administration and defence; compulsory social security	6.3	-5.9	-4.0	1.7	5.7	0.8	2.4	0.5	0.2	0.4
Education	1.9	-3.2	5.2	-8.2	1.2	2.0	1.7	3.0	2.7	0.3
Human health and social work activities	-3.6	7.0	12.4	-9.5	1.3	-4.8	4.7	2.0	1.5	1.6
Arts, entertainment and recreation	-15.1	22.9	55.2	3.8	4.1	5.3	3.3	0.2	0.7	0.6
Other service activities	25.9	5.0	84.2	-49.0	1.0	-2.3	5.4	0.4	1.3	0.0
Activities of households as employers	-	-	-	-	-	-	-	-	-	-
TOTAL	1.8	5.0	6.8	2.6	2.8	3.7	3.7	0.9	-1.0	-0.0

