



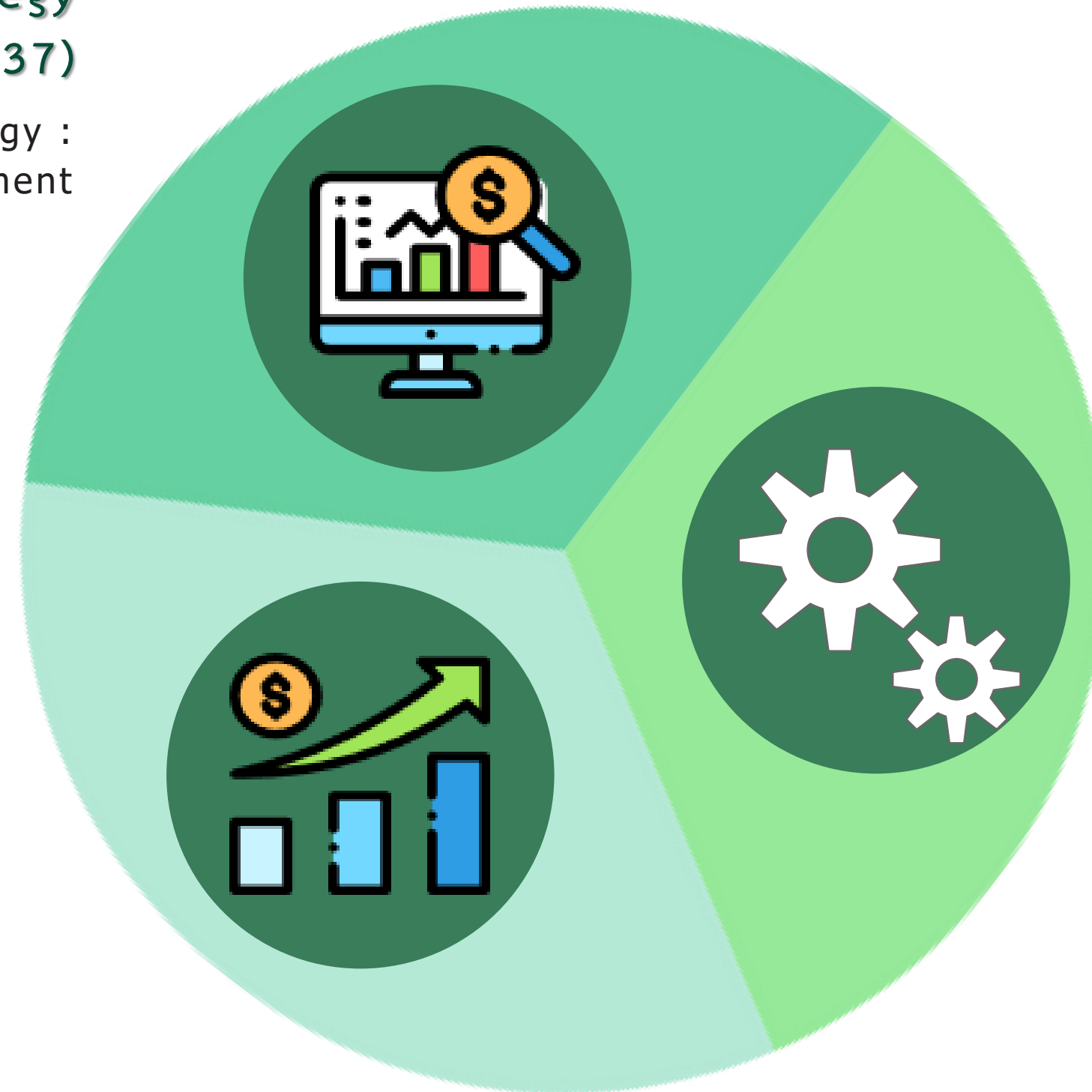
Linkage between Economic Corridors Development , the 20-Year National Strategy, and the 13th National Economic and Social Development Plan

20-Year
National Strategy
(2018 – 2037)

2nd Strategy :
Competitiveness enhancement

13th National
Economic and Social
Development Plan

Milestone 8 : Thailand has smart cities
as well as safe and livable regions with
sustainable growth



9th Master Plan :
Special Economic Zones

Plan : Special Economic Zone development

Promulgation of Establishing for Special Economic Zones in Thailand

Special Economic Zones

10 Border Special Economic Zones

Continuously operated since 2015



- Tak
- Chiang Rai
- Kanchanaburi
- Nong Khai
- Nakhon Phanom
- Mukdahan
- Sakaeo
- Trat
- Songkhla
- Narathiwat

4 Economic Corridors

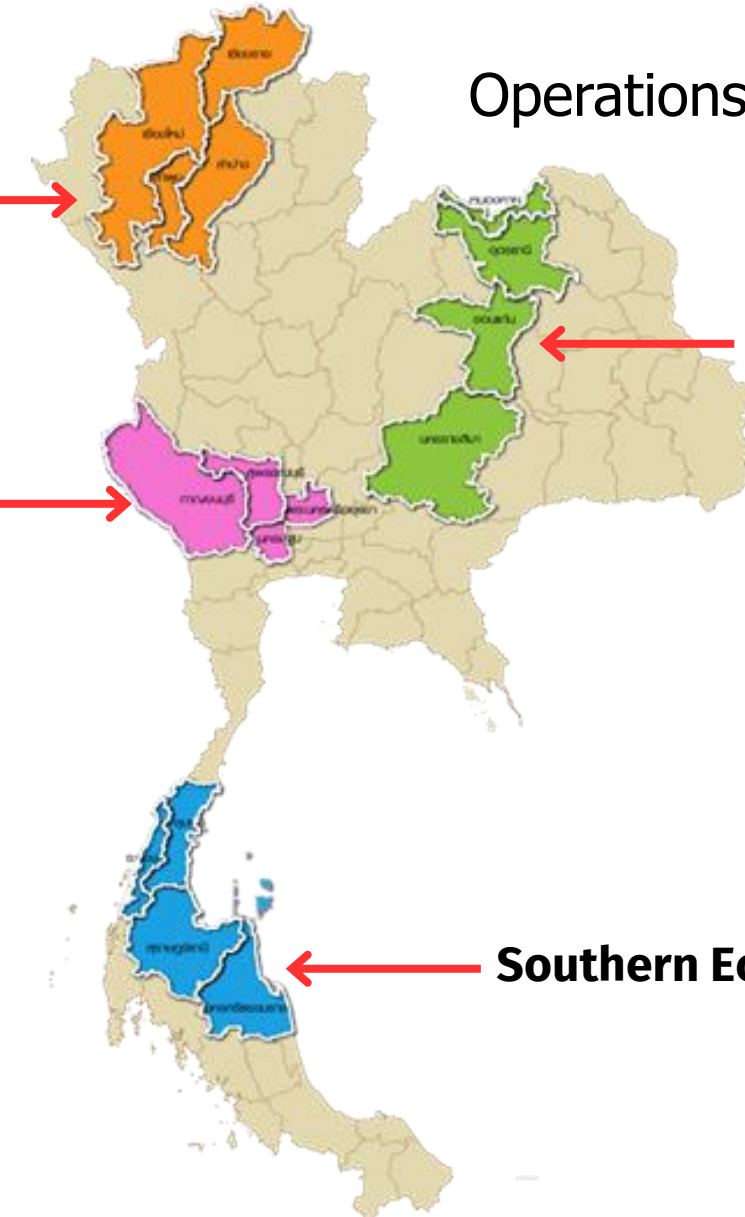
Operations started since 2021

Northern Economic Corridor:
NEC – Creative LANNA

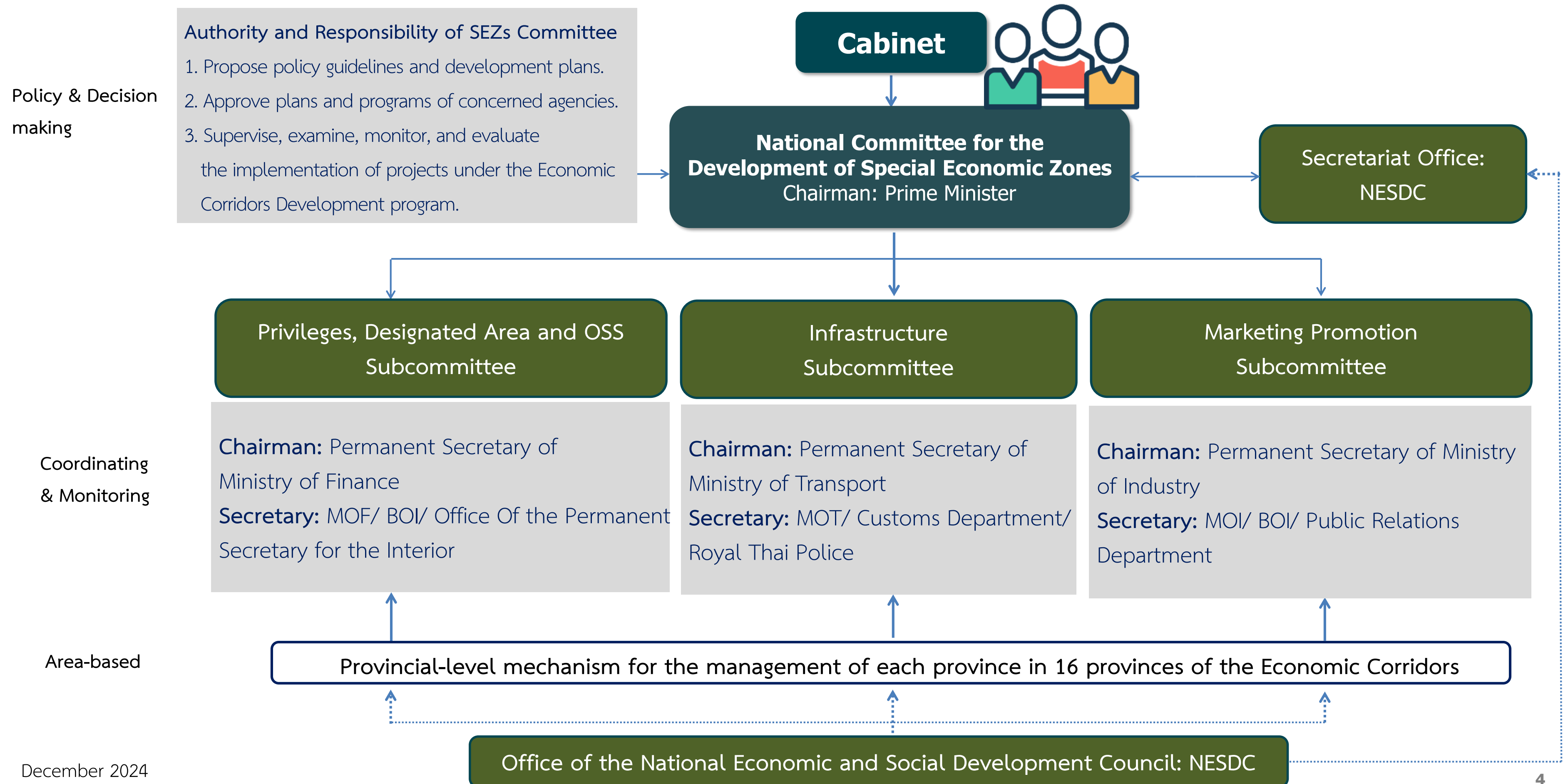
Central - Western Economic Corridor: CWEC

Northeastern Economic Corridor: NeEC – Bioeconomy

Southern Economic Corridor: SEC



Policy & Implementing Mechanism for Economic Corridors Development Program



Framework : Thailand's Economic Corridors Development Program

Relevant Plans and Policy

20-Year National Strategy (2018 – 2037)

2nd Strategy: Competitiveness enhancement

Master Plan

9th Master Plan: Special Economic Zones

13th National Economic and Social Development Plan

Milestone 8: Thailand has smart cities as well as safe and livable regions with sustainable growth

Relevant Policy

BCG Model /Thailand 4.0

Economic Corridors Development

Vision

Create new economics and the model of spatial development relating to BCG Policy and Thailand 4.0 for a sustainable country

Objectives

1. Prosperity contribution to regional areas
2. Create opportunities for economic activities and social development
3. Increase in and improvement of quality of life
4. Connect economic activities within each region and other surrounding economic areas

Target Areas

NEC



Chiang Mai, Chiang Rai, Lamphun & Lampang

NeEC



Nakhon Ratchasima, Khon Kaen, Udon Thani & Nong Khai

CWEC



Phra Nakhon Si Ayutthaya, Nakhon Pathom, Suphan Buri & Kanchanaburi

SEC



Chumphon, Ranong, Surat Thani & Nakhon Si Thammarat

Development Themes

Creative LANNA

Bio-economy

Agro & High Tech Industry
Green & Heritage Tourism

Western Gateway
Bio-industry & High Value Argo Ind.
Wellness & Local Tourisms

Approaches

Promote and facilitate investment

Provide economic infrastructure linking to the economic corridors with other surrounding economic areas in Thailand and neighboring countries

Improve the value chain for high-value products and services by using technology and innovation

Develop human resources and entrepreneurs for targeted activities of each economic corridor

Support research and development, technology transfer, and create cooperation/partnership in R&D and technology for entrepreneurs

Factors

Incentives

Infrastructures

Public Facilities

Logistics

Human resource
development

Education

R & D

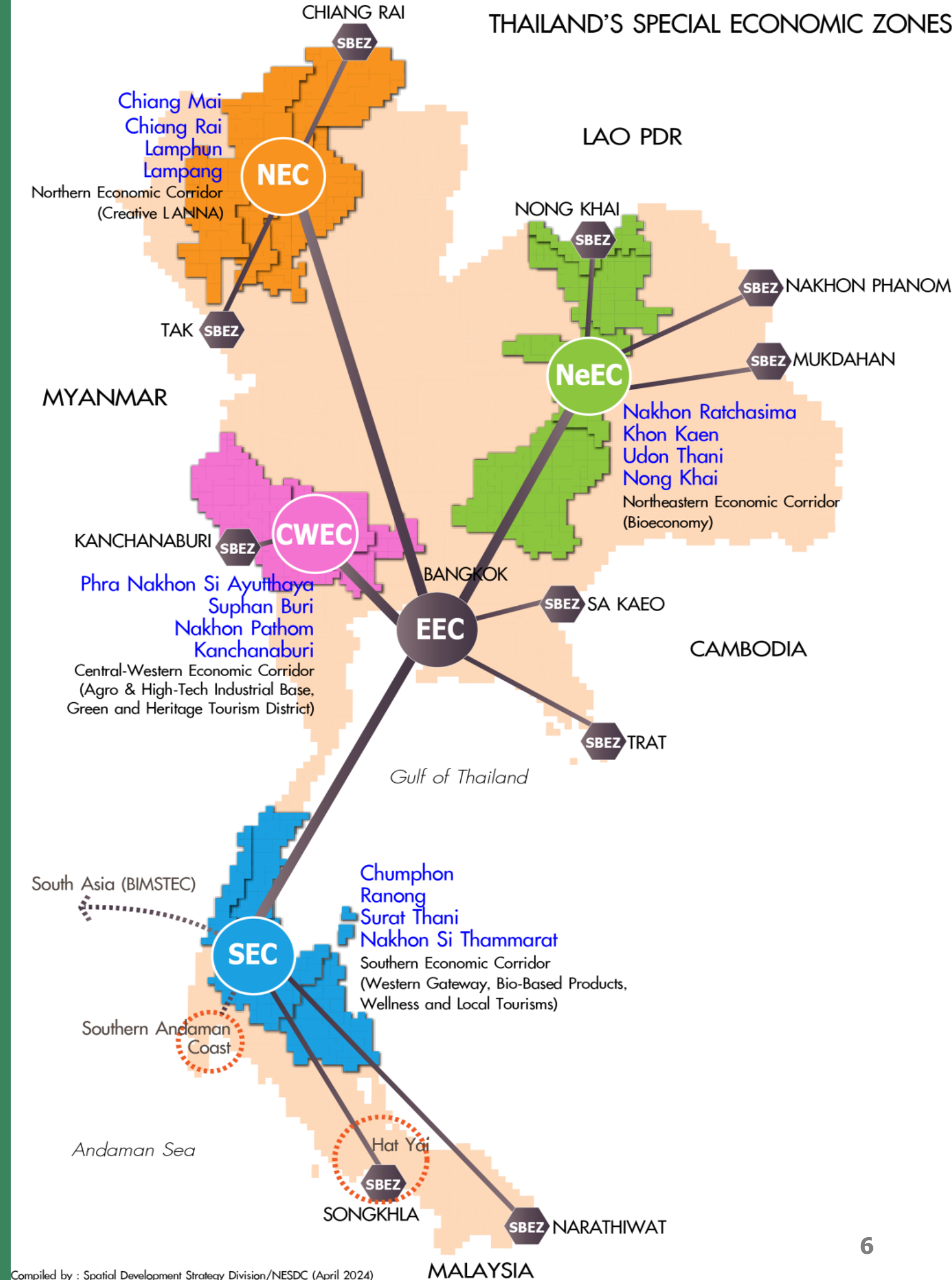
Technology

Regulations

Target Areas

In 2022, Thailand commenced the establishment of **16 provinces** in 4 regions as Thailand's economic corridors

- (1) **Northern Economic Corridor (NEC – Creative LANNA)** :
Chiang Mai, Chiang Rai, Lamphun, and Lampang
- (2) **Northeastern Economic Corridor (NeEC – Bioeconomy)** :
Nakhon Ratchasima, Khon Kaen, Udon Thani, and Nong Khai
- (3) **Central - Western Economic Corridor (CWEK)** :
Phra Nakhon Si Ayutthaya, Nakhon Pathom, Suphan Buri, and Kanchanaburi
- (4) **Southern Economic Corridor (SEC)** :
Chumphon, Ranong, Surat Thani, and Nakhon Si Thammarat



Objectives & Approaches

Northern Economic Corridor (NEC – Creative LANNA)

Chiang Mai, Chiang Rai, Lamphun, and
Lampang : To be Thailand's base of
the creative economy

- Create creative ecosystem for creative cities
- Support creative products and services development
- Promote brands and marketing for the creative industry
- Develop creative R&D and support workforce in creative industry

Northeastern Economic Corridor (NeEC - Bioeconomy)

Nakhon Ratchasima, Khon Kaen, Udon Thani,
and Nong Khai : To be Thailand's new base of bio-
industry by using technology and innovation throughout
the supply chain

- Develop safe and eco-friendly bio-based products
- Promote investment in agricultural, bio-industry, and relevant industries using technology and innovation
- Promote marketing for high-value agro-products and bio-based products
- Support creating a workforce for agriculture and bio-industry

Central - Western Economic Corridor (CWECC)

Phra Nakhon Si Ayutthaya, Nakhon Pathom,
Suphan Buri, and Kanchanaburi :

To be the base of high-tech industry and agro-
industry connecting Bangkok and surrounding
areas, including EEC, and promoting local tourism

- Enhance increasing the competitiveness of the old industrial base in the CWECC area
- Support high-tech industry in the CWECC area
- Promote local tourism, especially historical tourism and ecotourism

Southern Economic Corridor (SEC)

Chumphon, Ranong, Surat Thani, and Nakhon Si Thammarat :
To be the center of the southern region for trade and logistics linking to
the main economic areas of the country and the Andaman coast area
and base of high-value agro-industry (Palm oil, Rubber, Fishery products,
etc.) and bio-industry, including promoting the standard of the travel
industry to international level

- Develop and link tourism in Thai gulf coast area to Andaman coast area through wellness and local based tourism
- Promote high-value agro-industry and bio-industry
- Support natural and cultural conservation, including livable city development
- Enhance SEC to be the role of gateway for trade and logistics



Economic Corridors Development Plan



1. Investment Promotion & Facilitation

(Privileges, Designated Area and OSS Subcommittee)

- Provide highest incentives for targeted activities
- Provide the measures to create ecosystem for investment
- Promote the targeted activities in the economic corridors + BCG
- Facilitate investment process e.g. setting One Stop Service centre



2. Infrastructure Development

(Infrastructure Subcommittee)

- Plan the development of Infrastructures for transportation, logistics, Digital Infrastructure, Industrial estate and public facilities to support the investment in the economic corridors areas, including linking to other surrounding economic areas



3. Supply Chain Development for the Manufacturing and Service Sector

(Ministry of Industry)

- Improve the value chain for high-value products and services
- Develop and link the supply chain for products and services
- Support the supply chain management strategy + creating value-added for all linkage process in the supply chain



4. Human resources and Entrepreneurs Development

(Ministry of Labour & Ministry of Commerce)

- Support creating workforce for the targeted activities in the economic corridors areas
- Promote the competitiveness of doing business for the entrepreneurs
- Incubate the local entrepreneurs to upgrade the business by technology and innovation
- Develop the competitiveness of the service provider



5. R&D and Innovation

(Ministry of Higher Education, Science, Research and Innovation)

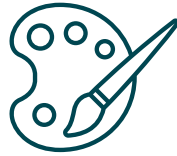
- Elevate value-added for products through R&D
- Support R&D and technology transferring
- Promote knowledge exchange between governments - private sectors – universities – communities
- Develop R&D Center

Others

(Relevant Ministries & Institutions)

- Funding support e.g. Funding for R&D, Loan for startup business, Loan for SMEs
- Regulations amending for the ease of doing business, including Reforming governments operation system to Digital Government, E-service , Upgrading the regulation for standard of the productions and process

Targeted Activities in Economic Corridors



NEC : Chiang Mai, Chiang Rai, Lamphun, and Lampang

Creative Industry e.g. R&D centers, Product Design centers, Products for Lifestyle, Movie Town

Digital Industry e.g. Digital Park, Data Center, Cloud Service

Wellness and Tourism Industries e.g. Amusement parks Cultural centers, Museums, Thai wellness services

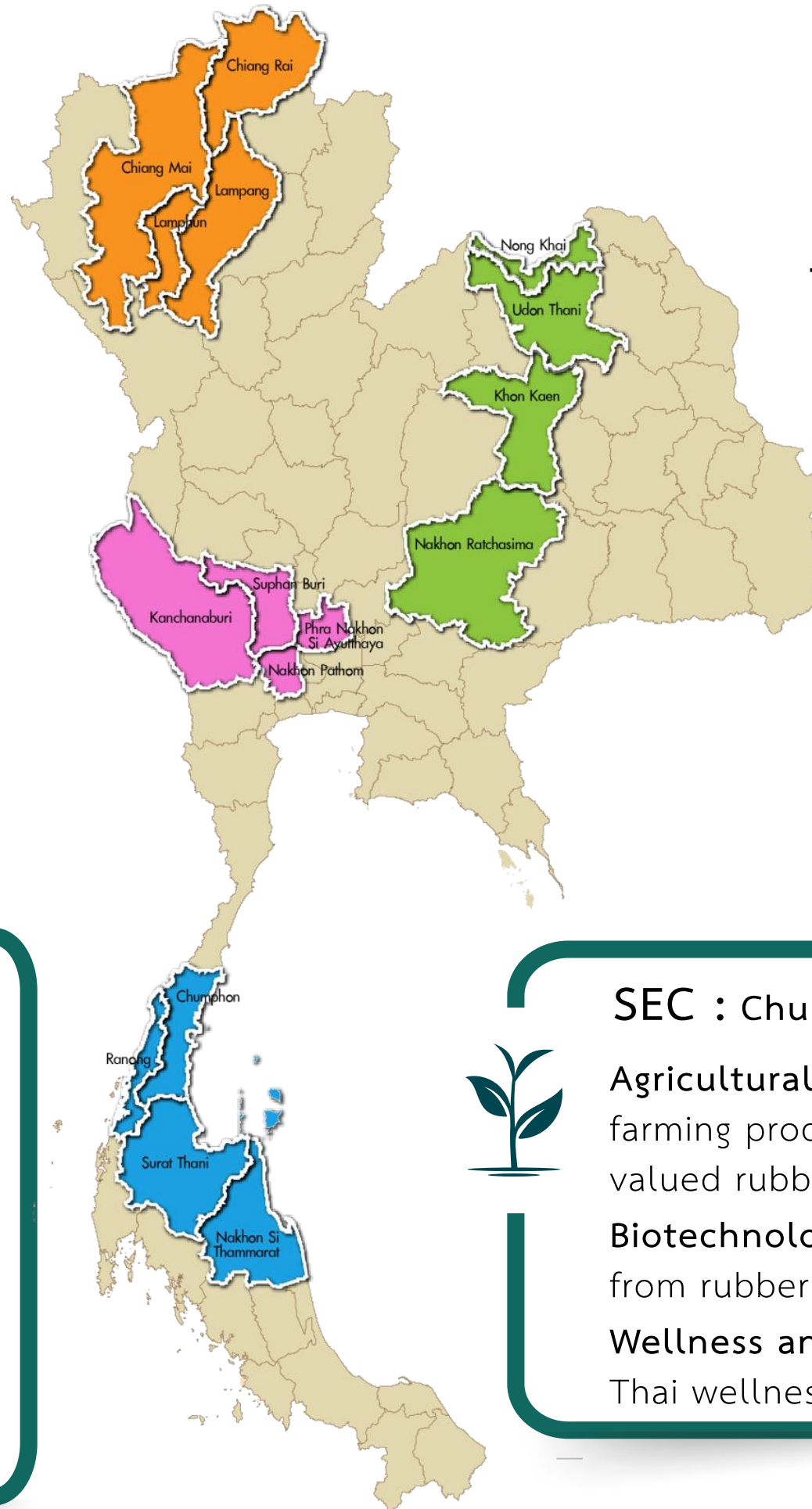
Agricultural and Food Industries e.g. GAP farming products, Organic farming products, Future Food, Products from natural extracts, including Agricultural and food industrial estate



CWEC : Phra Nakhon Si Ayutthaya, Nakhon Pathom, Suphan Buri, and Kanchanaburi

Agricultural and Food Industries e.g. GAP farming products, Organic farming products (e.g. Plant Factory) Future Food Products from natural extracts, including Agricultural and food industrial estate

Electrical Appliances and Electronics industries e.g. Smart electrical appliances and products, Electronics design



National Committee for the Development of SEZs has also endorsed 6 targeted industries for Thailand's Economic Corridors



NeEC : Nakhon Ratchasima, Khon Kaen, Udon Thani, and Nong Khai

Biotechnology Industry e.g. Bio-plastic, Packaging from agro-industrial waste, Bio-chemical products

Agricultural and Food Industries e.g. GAP farming products, Organic farming products, Future Food (Alternatives protein/ Medical food) Products from natural extracts, including Agricultural and food industrial estate



SEC : Chumphon, Ranong, Surat Thani, and Nakhon Si Thammarat

Agricultural and Food Industries e.g. GAP farming products, Organic farming products, Future Food, Products from natural extracts, High-valued rubber products, including Agricultural and food industrial estate

Biotechnology Industry e.g. Oleochemical Products, Natural extract from rubber

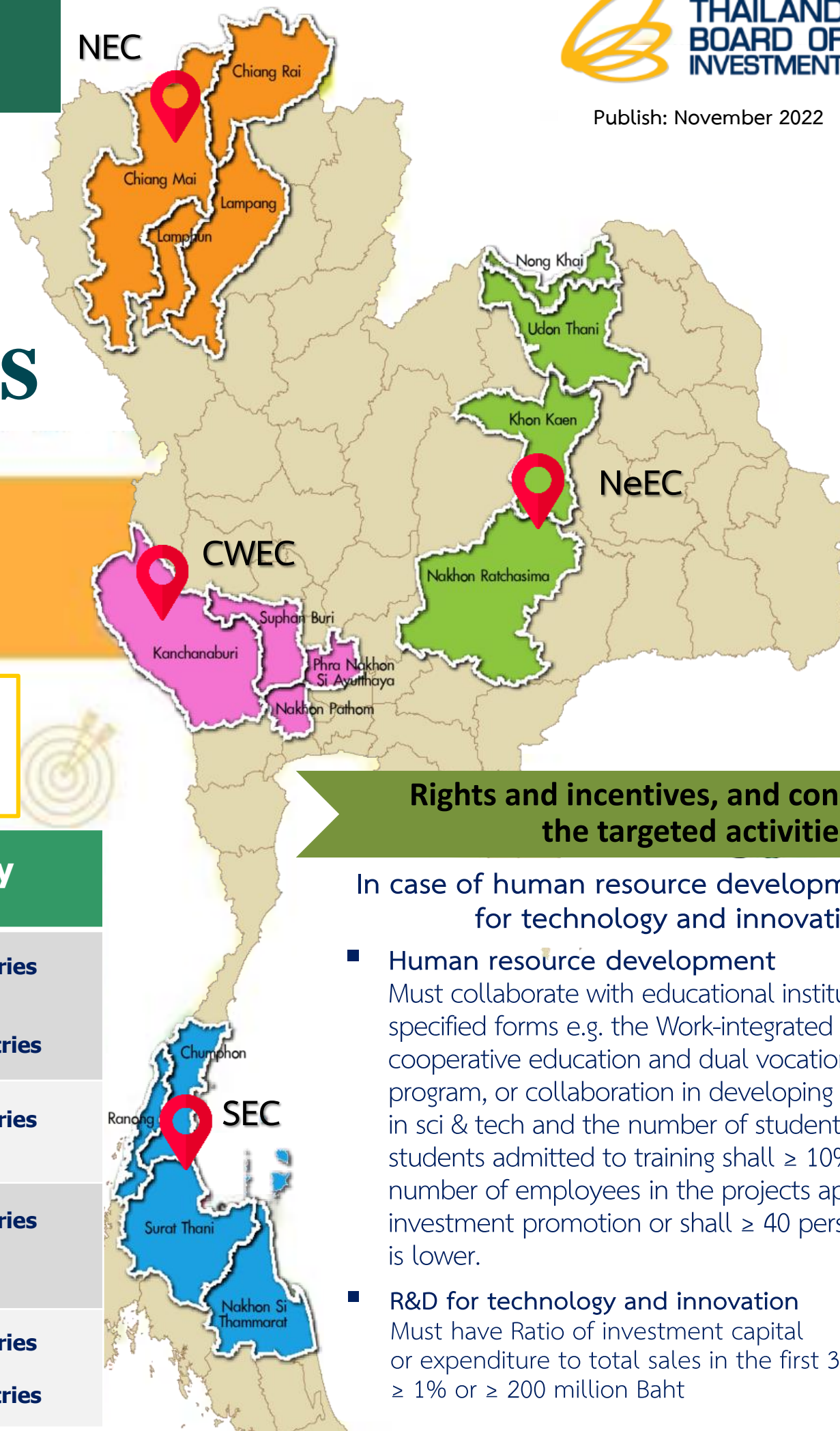
Wellness and Tourism Industries e.g. Cultural centers, Museums, Thai wellness services

Thailand's Economic Corridors

"Promote targeted industry for prosperity contribution to regional areas thoroughly"

Targeted Industry for Initial Phase of
The Economic Corridors

Economic Corridors	Province	Target Industry
NEC	Chiang Mai, Chiang Rai, Lamphun, Lampang	<ul style="list-style-type: none"> ❖ Agricultural & Food Industries ❖ Digital Industry ❖ Creative Industry ❖ Wellness & Tourism Industries
NeEC	Khon Kaen, Nakhon Ratchasima, Udon Thani, Nong Khai	<ul style="list-style-type: none"> ❖ Agricultural & Food Industries ❖ Biotechnology Industry
CWEC	Phra Nakhon Si Ayutthaya, Nakhon Pathom, Suphan Buri, Kanchanaburi	<ul style="list-style-type: none"> ❖ Agricultural & Food Industries ❖ Electrical Appliances & Electronics industries
SEC	Chumphon, Ranong, Surat Thani, Nakhon Si Thammarat	<ul style="list-style-type: none"> ❖ Agricultural & Food Industries ❖ Biotechnology Industry ❖ Wellness & Tourism Industries



A1+
CIT Exception
10 - 13 years
(no cap)
Technology and Innovation Development includes targeted core technology development such as development of biotechnology, nano - technology, advanced materials technology and digital technology

A1-A4
CIT Exception
3 - 8 years

- A1** Knowledge-based activities focusing on R&D and design to enhance the country's competitiveness.
- A2** Infrastructure activities for the country's development, activities using advanced technology to create value-added, with no or very few existing investments in Thailand.
- A3** High technology activities which are important to the development of the country, with a few investments already existing in Thailand.
- A4** Activities with lower technology than A1-A3 but which add value to domestic resources and strengthen the supply chain.

Rights and incentives, and conditions for the targeted activities

In case of human resource development or R&D for technology and innovation

- Human resource development
Must collaborate with educational institution in the specified forms e.g. the Work-integrated Learning (WiL), cooperative education and dual vocational training program, or collaboration in developing Thai personnel in sci & tech and the number of students or university students admitted to training shall $\geq 10\%$ of the total number of employees in the projects applying for investment promotion or shall ≥ 40 persons, whichever is lower.
- R&D for technology and innovation
Must have Ratio of investment capital or expenditure to total sales in the first 3 years $\geq 1\%$ or ≥ 200 million Baht

A1+
shall be entitled to
2 additional years of CIT exemption.

A1-A4
shall be entitled to **50 % deduction** from the normal rate of CIT for **3 additional years of CIT exemption.**

Next Steps



Accelerate for increasing the investment in 4 economic corridors

Promote current investment incentive measures in 4 economic corridors and economic corridor policy to the public, including setting additional measures to support and create the investment ecosystem.



Develop infrastructure for 4 economic corridor areas

Develop the infrastructure within 4 economic corridors, both hard and soft infrastructure, as well as the infrastructure connecting to other economic areas in Thailand and neighboring countries. Support the infrastructure to match each corridor approach, such as digital infrastructure in NEC, transportation infrastructure for logistics in SEC, and infrastructure for R&D in NeEC and CWeC



Develop Supply Chain for the Manufacturing and Service Sector

Research for selecting the potential products in the targeted industries to develop the product's supply chain linkages in 4 economic corridors and surrounding areas and encouraging local entrepreneurs and communities to participate in and benefit from targeted industry development



Prepare the local entrepreneurs and workforce for targeted industries

Support local workforce and entrepreneurs for upskilling by collaboration with local education institutes for improving the competitiveness and matching the targeted industries in each economic corridor



Support R&D and Innovation

Encourage the entrepreneurs to translate the research project into commercialization through regional sci-park and research centers. In addition, support the universities for incubating innovation for local entrepreneurs and farmers.