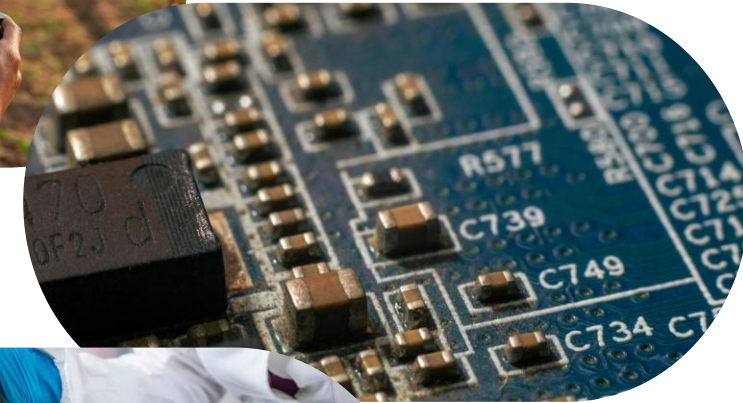




[www.nesdc.go.th](http://www.nesdc.go.th)

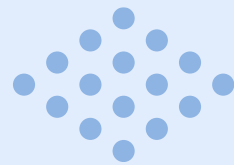
# THAILAND'S ECONOMIC CORRIDORS DEVELOPMENT

May 2026





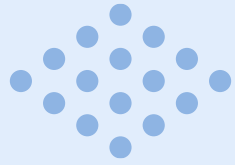
# ➤ Linkage Economic Corridors Development, the 20-Year National Strategy between and the 13th National Economic and Social Development Plan



**13th National Economic and Social Development Plan**

**20-Year National Strategy (2018 - 2037)**

**2nd Strategy : Competitiveness enhancement**



**9th Master Plan : Special Economic Zones**

**Milestone 8 : Thailand has smart cities as well as safe and livable regions with sustainable growth**

**Plan : Economic Corridors development**



# Promulgation of Establishing for Special Economic Zones in Thailand

## Special Economic Zones

### 10 Special Border Economic Zones



- Tak
- Chiang Rai
- Kanchanaburi
- Nong Khai
- Nakhon Phanom
- Mukdahan
- Sakaeo
- Trat
- Songkhla
- Narathiwat

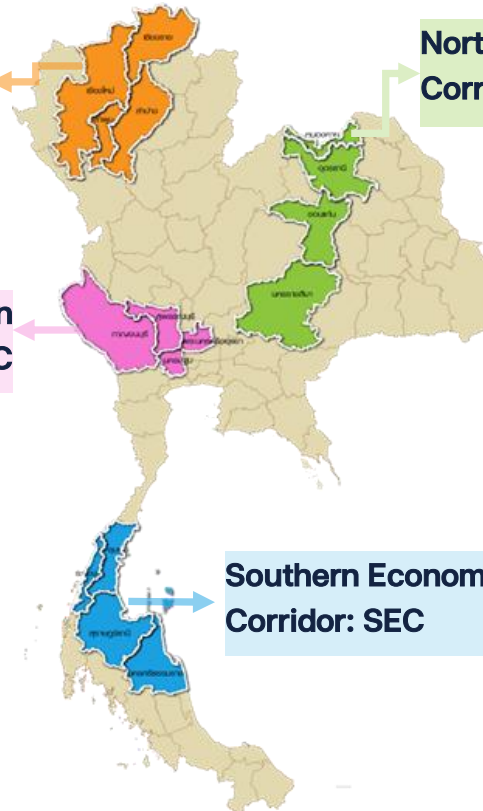
### 4 Economic Corridors

Northern Economic Corridor:  
NEC - Creative LANNA

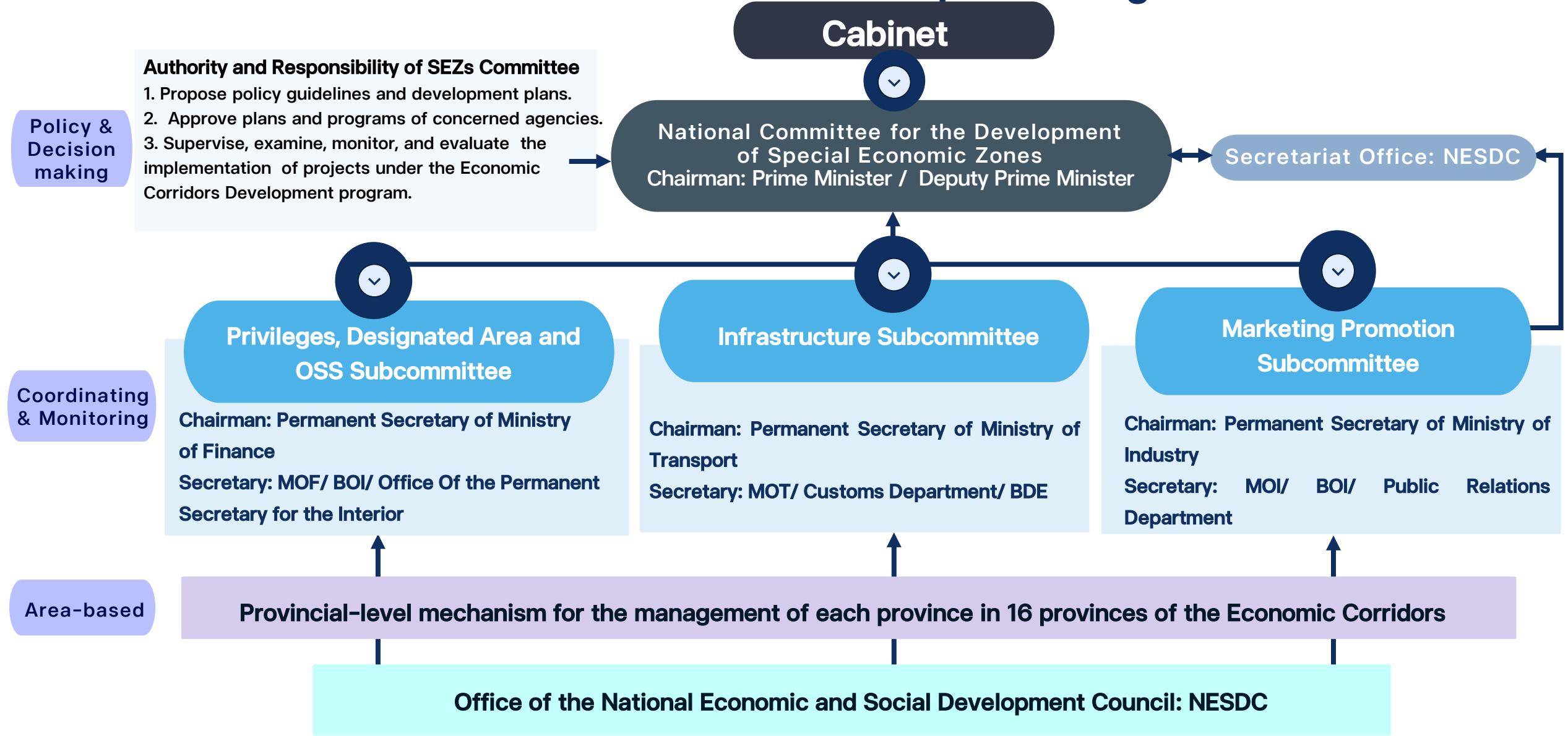
Northeastern Economic  
Corridor: NeEC - Bioeconomy

Central - Western  
Economic Corridor: CWEC

Southern Economic  
Corridor: SEC



# Policy & Implementing Mechanism for Economic Corridors Development Program



# Framework: Thailand's Economic Corridors Development Program

2<sup>nd</sup> 20-Year National Strategy (2018 - 2037)  
Strategy: Competitiveness enhancement

Relevant Plans and Policy

**Master Plan**  
9<sup>th</sup> Master Plan:  
Special Economic Zones

**13<sup>th</sup> National Economic and Social Development Plan**  
Milestone 8: Thailand has smart cities as well as safe and livable regions with sustainable growth

**Government Policy**  
BCG Model /Thailand 4.0

## Economic Corridors Development

Vision

Create new economics and the model of spatial development relating to BCG Policy and Thailand 4.0 for a sustainable country

Objectives

1. Prosperity contribution to regional areas
2. Create opportunities for economic activities and social development
3. Increase in and improvement of quality of life
4. Connect economic activities within each region and other surrounding economic areas

Target Areas



Chiang Mai, Chiang Rai, Lamphun & Lampang



Nakhon Ratchasima, Khon Kaen, Udon Thani & Nong Khai



Phra Nakhon Si Ayutthaya, Nakhon Pathom, Suphan Buri & Kanchanaburi



Chumphon, Ranong, Surat Thani & Nakhon Si Thammarat

Development Themes

Creative LANNA

Bio-economy

Agro & High Tech Industry  
Green & Heritage Tourism

Western Gateway  
Bio-industry & High Value Argo  
Ind. Wellness & Local Tourisms

Approaches

Promote and facilitate investment

Provide economic infrastructure linking to the economic corridors with other surrounding economic areas in Thailand and neighboring countries

Improve the value chain for high-value products and services by using technology and innovation

Develop human resources and entrepreneurs for targeted activities of each economic corridor

Support research and development, technology transfer, and create cooperation/partnership in R&D and technology for entrepreneurs

Factors

Incentives

Infrastructures

Public Facilities

Logistics

Human resource development

Education

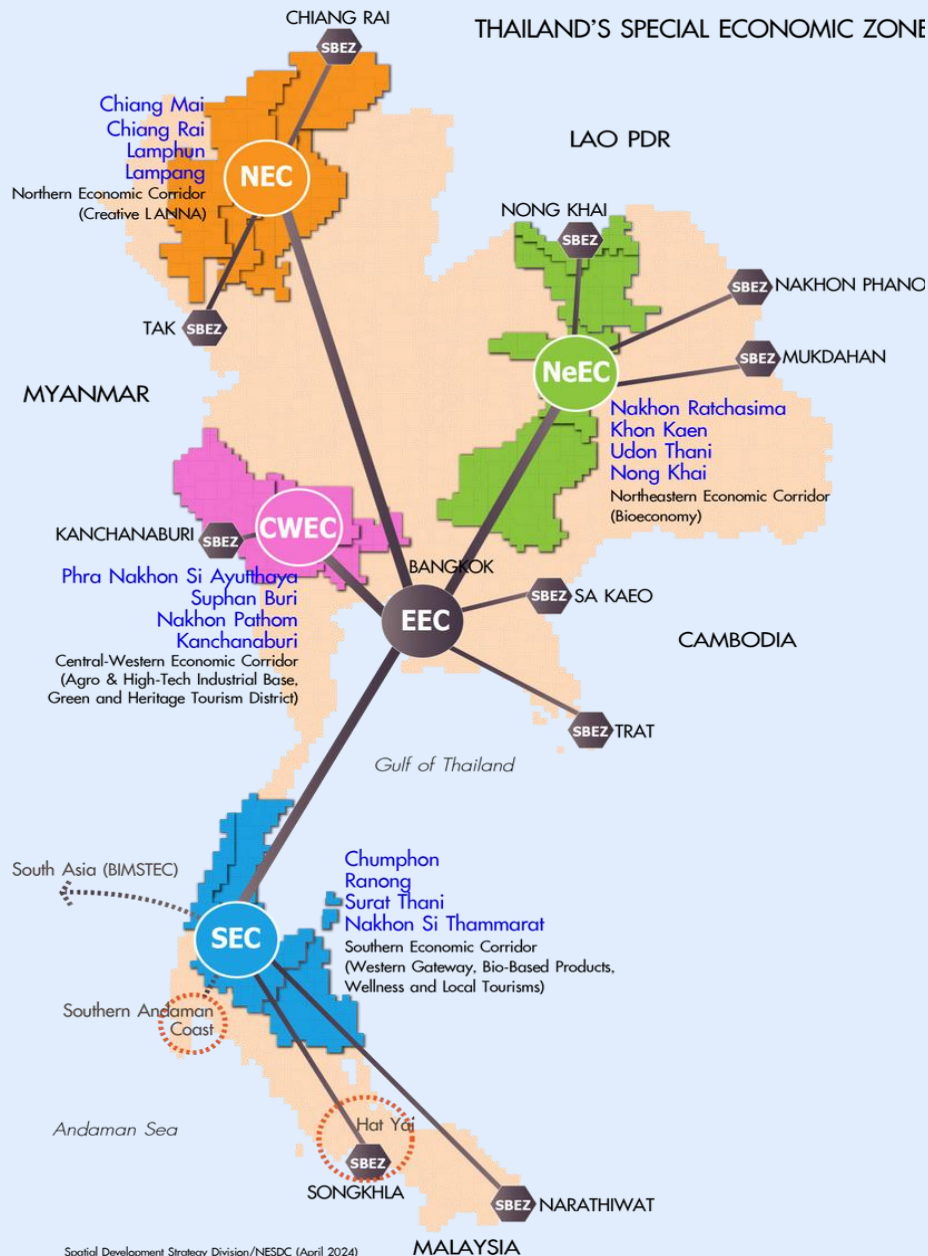
R&D

Technology

Regulations

# Target Areas

In 2022, Thailand commenced the establishment of **16 provinces** in 4 regions as Thailand's economic corridors



- 1 Northern Economic Corridor (NEC - Creative LANNA)**  
 Chiang Mai, Chiang Rai, Lamphun, and Lampang
- 2 Northeastern Economic Corridor (NeEC - Bioeconomy)**  
 Nakhon Ratchasima, Khon Kaen, Udon Thani, and Nong Khai
- 3 Central - Western Economic Corridor (CWEC)**  
 Phra Nakhon Si Ayutthaya, Nakhon Pathom, Suphan Buri, and Kanchanaburi
- 4 Southern Economic Corridor (SEC)**  
 Chumphon, Ranong, Surat Thani, and Nakhon Si Thammarat

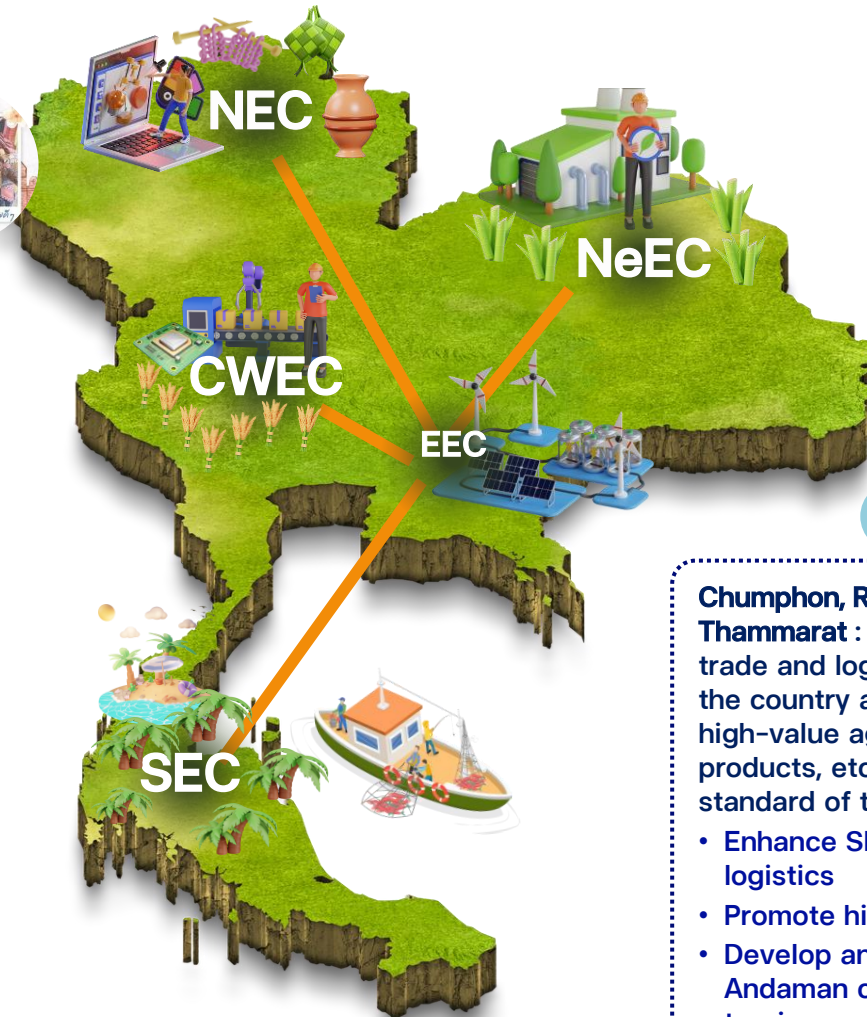
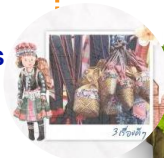
# Objectives & Approaches

## Northern Economic Corridor (NEC - Creative LANNA)

**Chiang Mai, Chiang Rai, Lamphun, and Lampang :**

To be Thailand's base of the creative economy

- Create creative ecosystem for creative cities
- Support creative products and services development
- Promote brands and marketing for the creative industry
- Develop creative R&D and support workforce in creative industry



## Northeastern Economic Corridor (NeEC - Bioeconomy)

**Nakhon Ratchasima, Khon Kaen, Udon Thani, and Nong Khai :** To be Thailand's new base of bio-industry by using technology and innovation throughout the supply chain

- Develop safe and eco-friendly bio-based products
- Promote investment in agricultural, bio-industry, and relevant industries using technology and innovation
- Promote marketing for high-value agro-products and bio-based products
- Support creating a workforce for agriculture and bio-industry



## Central - Western Economic Corridor (CWEC)

**Phra Nakhon Si Ayutthaya, Nakhon Pathom, Suphan Buri, and Kanchanaburi :**

To be the base of high-tech industry and agro-industry connecting Bangkok and surrounding areas, including EEC, and promoting local tourism

- Enhance increasing the competitiveness of the old industrial base in the CWEC area
- Support high-tech industry in the CWEC area
- Promote local tourism, especially historical tourism and ecotourism



## Southern Economic Corridor (SEC)

**Chumphon, Ranong, Surat Thani, and Nakhon Si Thammarat :**

To be the center of the southern region for trade and logistics linking to the main economic areas of the country and the Andaman coast area and base of high-value agro-industry (Palm oil, Rubber, Fishery products, etc.) and bio-industry, including promoting the standard of the travel industry to international level

- Enhance SEC to be the role of gateway for trade and logistics
- Promote high-value agro-industry and bio-industry
- Develop and link tourism in Thai gulf coast area to Andaman coast area through wellness and local based tourism
- Support natural and cultural conservation, including livable city development



# Targeted Activities in Economic Corridors

National Committee for the Development of SEZs has also endorsed 6 targeted industries for Thailand's Economic Corridors

## NEC : Chiang Mai, Chiang Rai, Lamphun, and Lampang



- **Creative Industries**  
e.g. R&D centers, Product Design centers, Products for Lifestyle and Movie Town
- **Digital Industries**  
e.g. Digital Park, Data Center and Cloud Service
- **Wellness and Tourism Industries**  
e.g. Amusement parks Cultural centers, Museums and Thai wellness services
- **Agricultural and Food Industries**  
e.g. GAP farming products, Organic farming products, Future Food, Products from natural extracts and including Agricultural and food industrial estate

## CWEC : Phra Nakhon Si Ayutthaya, Nakhon Pathom, Suphan Buri, and Kanchanaburi



- **Agricultural and Food Industries**  
e.g. GAP farming products, Organic farming products (e.g. Plant Factory) Future Food Products from natural extracts and including Agricultural and food industrial estate
- **Electrical Appliances and Electronics industries**  
e.g. Smart electrical appliances and products and Electronics design

## NeEC : Nakhon Ratchasima, Khon Kaen, Udon Thani, and Nong Khai

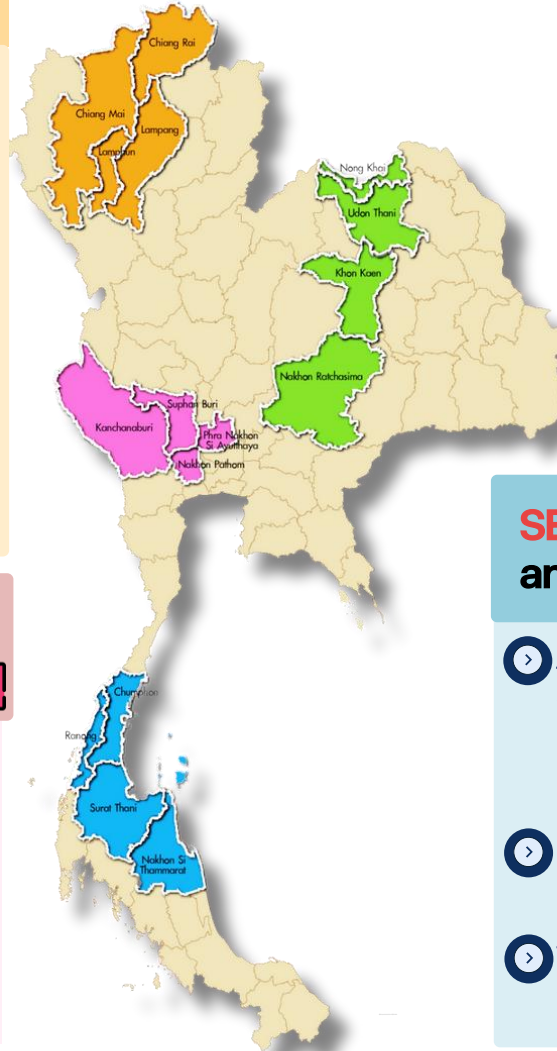


- **Biotechnology Industries**  
e.g. Bio-plastic, Packaging from agro-industrial waste and Bio-chemical products
- **Agricultural and Food Industries**  
e.g. GAP farming products, Organic farming products, Future Food (Alternatives protein/ Medical food) Products from natural extracts and including Agricultural and food industrial estate

## SEC : Chumphon, Ranong, Surat Thani, and Nakhon Si Thammarat



- **Agricultural and Food Industries**  
e.g. GAP farming products, Organic farming products, Future Food, Products from natural extracts, High-valued rubber products and including Agricultural and food industrial estate
- **Biotechnology Industries**  
e.g. Oleochemical Products and Natural extract from rubber
- **Wellness and Tourism Industries**  
e.g. Cultural centers, Museums and Thai wellness services



# Economic Corridors Development Plan

## Investment Promotion & Facilitation

(Privileges, Designated Area and OSS Subcommittee)



- Provide highest incentives for targeted activities
- Provide the measures to create ecosystem for investment
- Promote the targeted activities in the economic corridors + BCG
- Facilitate investment process (e.g. One Stop Service center)

## Human resources and Entrepreneurs Development

(Ministry of Labor & Ministry of Commerce)



- Support creating workforce for the targeted activities in the economic corridors areas
- Promote the competitiveness of doing business for the entrepreneurs
- Incubate the local entrepreneurs to upgrade the business by technology and innovation
- Develop the competitiveness of the service provider

## Infrastructure Development

(Infrastructure Subcommittee)



- Plan the development of Infrastructures for transportation, logistics, Digital Infrastructure, Industrial estate and public facilities to support the investment in the economic corridors areas, including linking to other surrounding economic areas

## R&D and Innovation

(Ministry of Higher Education, Science, Research and Innovation)



- Elevate value-added for products through R&D
- Support R&D and technology transferring
- Promote knowledge exchange between governments - private sectors - universities - communities
- Develop R&D Center

## Supply Chain Development for the Manufacturing and Service Sector

(Ministry of Industry)



- Improve the value chain for high-value products & services
- Develop and link the supply chain for products & services
- Support the supply chain management strategy + creating value-added for all linkage process in the supply chain

## Others

(Relevant Ministries & Institutions)



- Funding support e.g. Funding for R&D, Loan for startup business, Loan for SMEs
- Regulations amending for the ease of doing business, including Reforming governments operation system to Digital Government, E-service, Upgrading the regulation for standard of the productions and process



# NESDC BOI's Incentives Thailand's Economic Corridors

*"Promote targeted industry for prosperity contribution to regional areas thoroughly"*



Publish: November 2022

## Targeted Industry for Initial Phase of The Economic Corridors

### 1 Northern Economic Corridor (NEC - Creative LANNA)

Chiang Mai, Chiang Rai, Lamphun, and Lampang

- Target Industries
- Agriculture and food
  - Creative Industries
  - Digital
  - Tourism and Wellness Tourism

### 2 Northeastern Economic Corridor (NeEC - Bioeconomy)

Nakhon Ratchasima, Khon Kaen, Udon Thani, and Nong Khai

- Target Industries
- Agriculture and food
  - Bio Industries

### 3 Central - Western Economic Corridor (CWEC)

Phra Nakhon Si Ayutthaya, Nakhon Pathom, Suphan Buri, and Kanchanaburi

- Target Industries
- Agriculture and food
  - Electrical and Electronics

### 4 Southern Economic Corridor (SEC)

Chumphon, Ranong, Surat Thani, and Nakhon Si Thammarat

- Target Industries
- Agriculture and food
  - Bio Industries
  - Tourism and Wellness Tourism

**A1+**  
CIT Exception  
**10 - 13 years**  
(no cap)

Technology and Innovation Development includes targeted core technology development such as development of biotechnology, nano-technology, advanced materials technology and digital technology

**A1-A4**  
CIT Exception  
**3 - 8 years**

- A1** Knowledge-based activities focusing on R&D and design to enhance the country's competitiveness.
- A2** Infrastructure activities for the country's development, activities using advanced technology to create value-added, with no or very few existing investments in Thailand.
- A3** High technology activities which are important to the development of the country, with a few investments already existing in Thailand.
- A4** Activities with lower technology than A1-A3 but which add value to domestic resources and strengthen the supply chain.



## Rights and incentives, and conditions for the targeted activities

**In case of human resource development or R&D of technology and innovation**

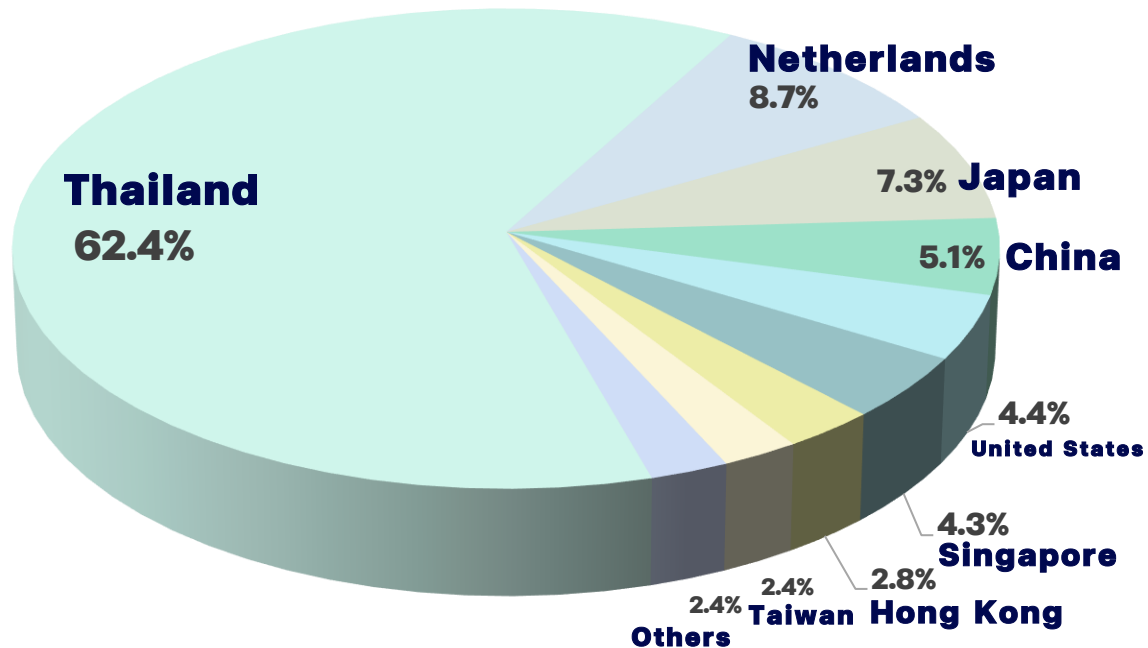
- **Human Resource Development Criteria**  
Must collaborate with educational institutions in the specified forms, e.g., the Work-integrated Learning (WiL), cooperative education, and dual vocational training program, or collaboration in developing Thai personnel in sci & tech while the number of students or university students admitted to training shall  $\geq$  10% of the total number of employees in the projects applying for investment promotion or shall  $\geq$  40 persons, whichever is lower.
- **R&D of Technology and Innovation Criteria**  
In the first 3 years, the total investments or expenditures on R&D in technology and innovation either on its own must account for  $\geq$  1% of the total sales or  $\geq$  200 million baht, whichever is less.

**A1+**  
shall be entitled to **2 additional years of CIT exemption.**

**A1-A4**  
shall be entitled to **50 % deduction from the normal rate of CIT for 3 additional years of CIT exemption.**

# Investment Promotion in Economic Corridors 2023-2025

Total Value of Investment  
**422,559 Million Baht\***



## Top 5 by Nationalities



### Netherlands

Public Utilities, Machinery and Vehicles



### Japan

Electrical Appliances and Electronics, Machinery and Vehicles, Metal and Material



### China

Electrical Appliances and Electronics, Machinery and Vehicles, Chemical and Petrochemical



### United States

Electrical Appliances and Electronics, Agricultural and Food, High Value Service



### Singapore

Electronic Equipment for Vehicles, Printed Circuit Board,

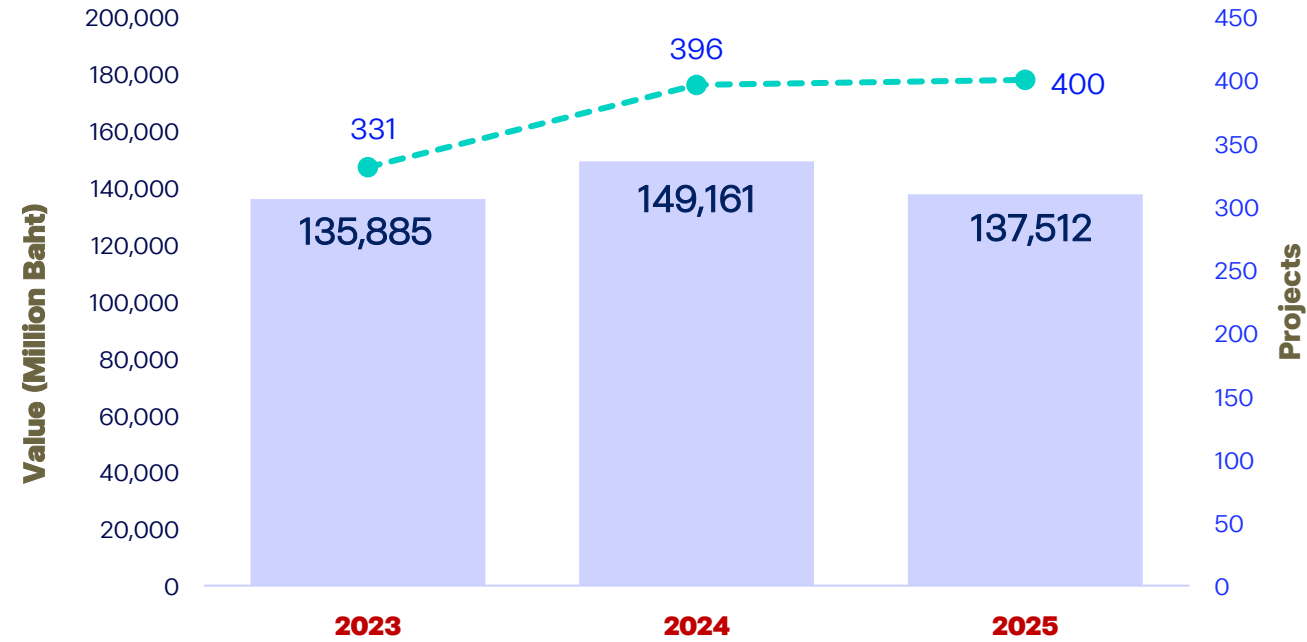
Source: BOI processed by NESDC

Note: \* is the value of the investment project submitted applications.

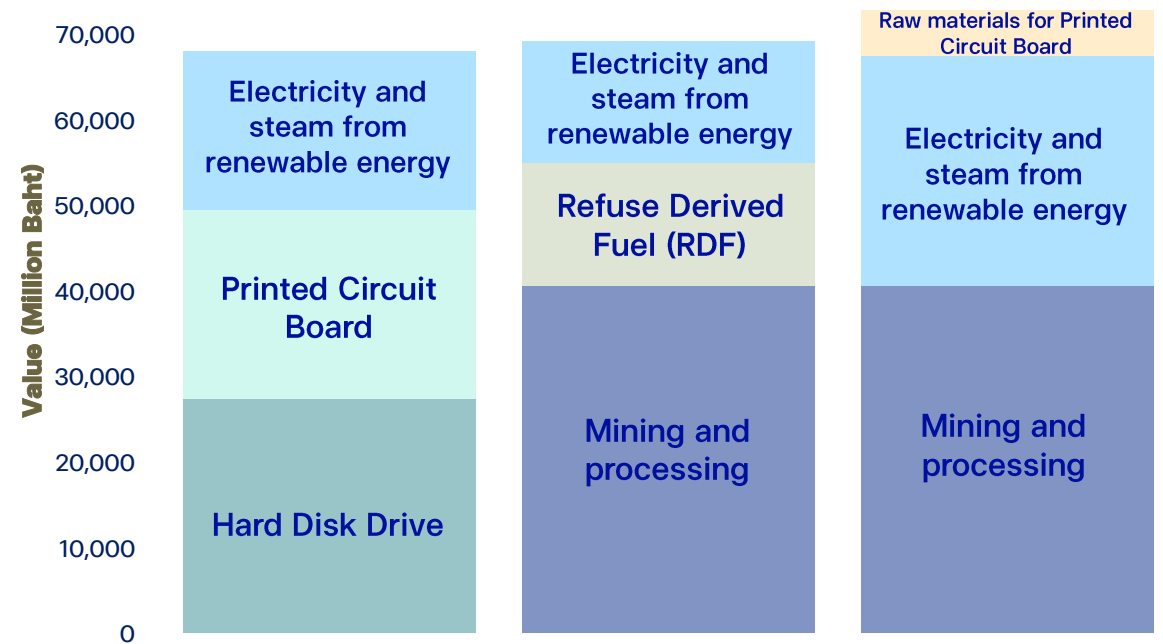


# Investment Promotion in Economic Corridors 2023-2025

- From 2023 to 2025, investment promotion in the economic corridors shows a steady upward trend in both value and project volume.
  - The top three for the highest value of investment projects are mostly in the electrical appliances and electronics industries, a targeted activity of CWEC.
- In 2023, the highest investments were in **hard disk drive production**, followed by **printed circuit board manufacturing**, and **electricity and steam from renewable energy**.
- In 2024, the highest investments were in mining and processing and **refuse derived fuel (RDF)**.
- In 2025, investment in **mining and processing** continued to be the highest, followed by **Electricity and steam from renewable energy** and **raw materials for printed circuit boards**, respectively.



Top 3 Highest Value of Investment by Type of Project





## NEXT STEPS



### Accelerate for increasing the investment in 4 economic corridors

Promote current investment incentive measures in 4 economic corridors and economic corridor policy to the public, including setting additional measures to support and create the investment ecosystem.



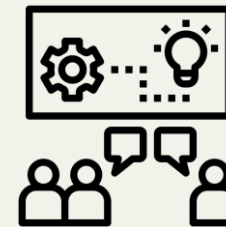
### Develop infrastructure for 4 economic corridor areas

Develop the infrastructure within 4 economic corridors, both hard and soft infrastructure, as well as the infrastructure connecting to other economic areas in Thailand and neighboring countries. Support the infrastructure to match each corridor approach, such as digital infrastructure in NEC, transportation infrastructure for logistics in SEC, and infrastructure for R&D in NeEC and CWEC



### Develop Supply Chain for the Manufacturing and Service Sector

Research for selecting the potential products in the targeted industries to develop the product's supply chain linkages in 4 economic corridors and surrounding areas and encouraging local entrepreneurs and communities to participate in and benefit from targeted industry development



### Prepare the local entrepreneurs and workforce for targeted industries

Support local workforce and entrepreneurs for upskilling by collaboration with local education institutes for improving the competitiveness and matching the targeted industries in each economic corridor



### Support R&D and Innovation

Encourage the entrepreneurs to translate the research project into commercialization through regional sci-park and research centers. In addition, support the universities for incubating innovation for local entrepreneurs and farmers.